

| HCP Sentron Switch— Horizontal |                   |              |              |                       |
|--------------------------------|-------------------|--------------|--------------|-----------------------|
| CONFIGURATION                  | LOAD END LOCATION | SWITCH STYLE | LUG LOCATION | FILLER PLATE LOCATION |
| STD SHIPPING CONFIG.           | RIGHT             | BRANCH       | RIGHT        | RIGHT                 |
| MODIFICATIONS REQ'D            | RIGHT             | MAIN         | LEFT         | LEFT                  |
| MODIFICATIONS REQ'D            | LEFT              | MAIN         | RIGHT        | RIGHT                 |
| MODIFICATIONS REQ'D            | LEFT              | BRANCH       | LEFT         | LEFT                  |

ALL HORIZONTAL CATALOG NUMBERS ARE SHIPPED AS A LOAD RIGHT BRANCH DEVICE. WIRE CONNECTORS ARE SOLD SEPARATELY IN KITS. SEE TABLE BELOW FOR WIRE CONNECTORS. INSTRUCTIONS ARE PROVIDED WITH SWITCH FOR FEED REVERSAL AND FILLER PLATE REVERSAL.

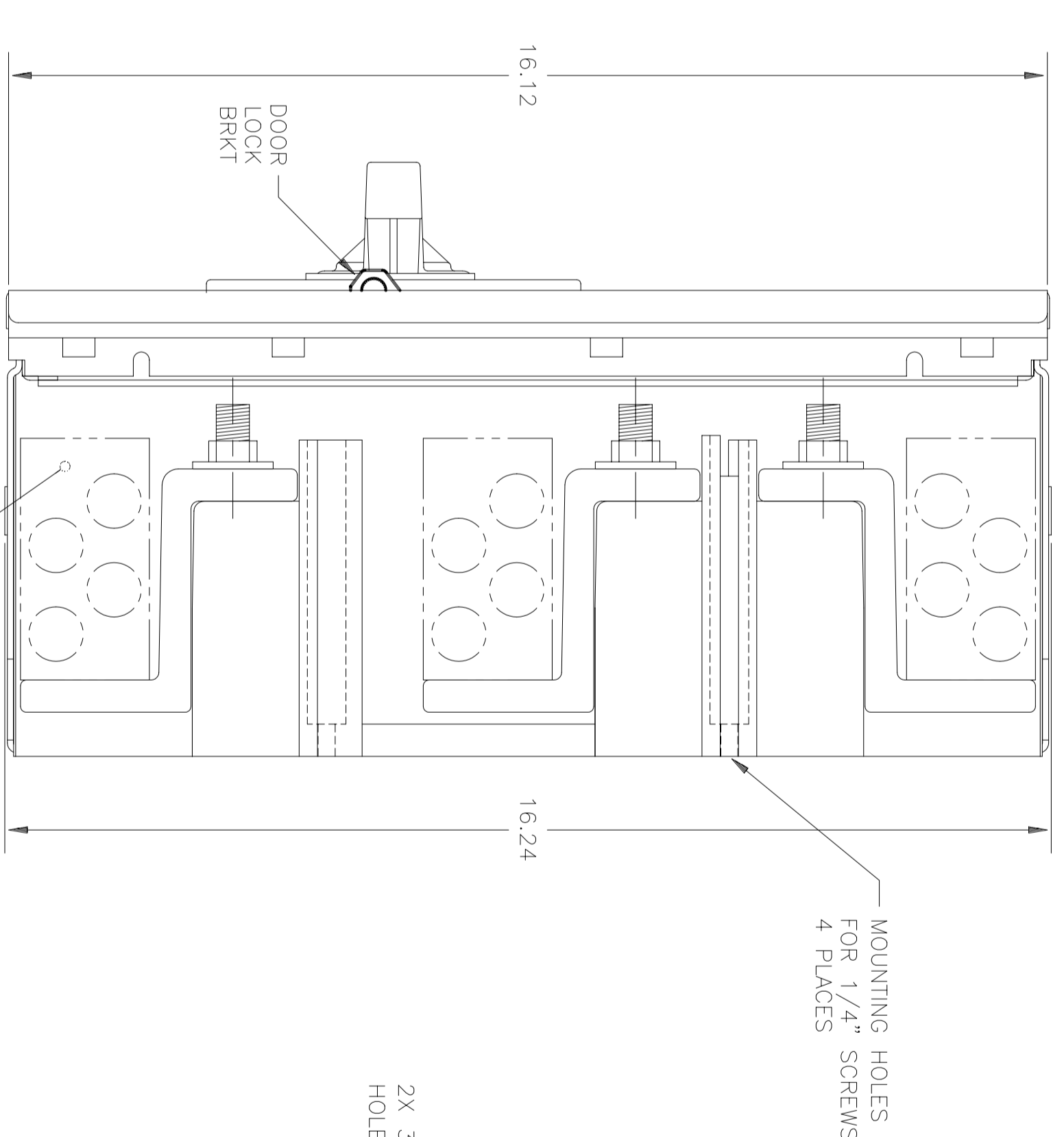
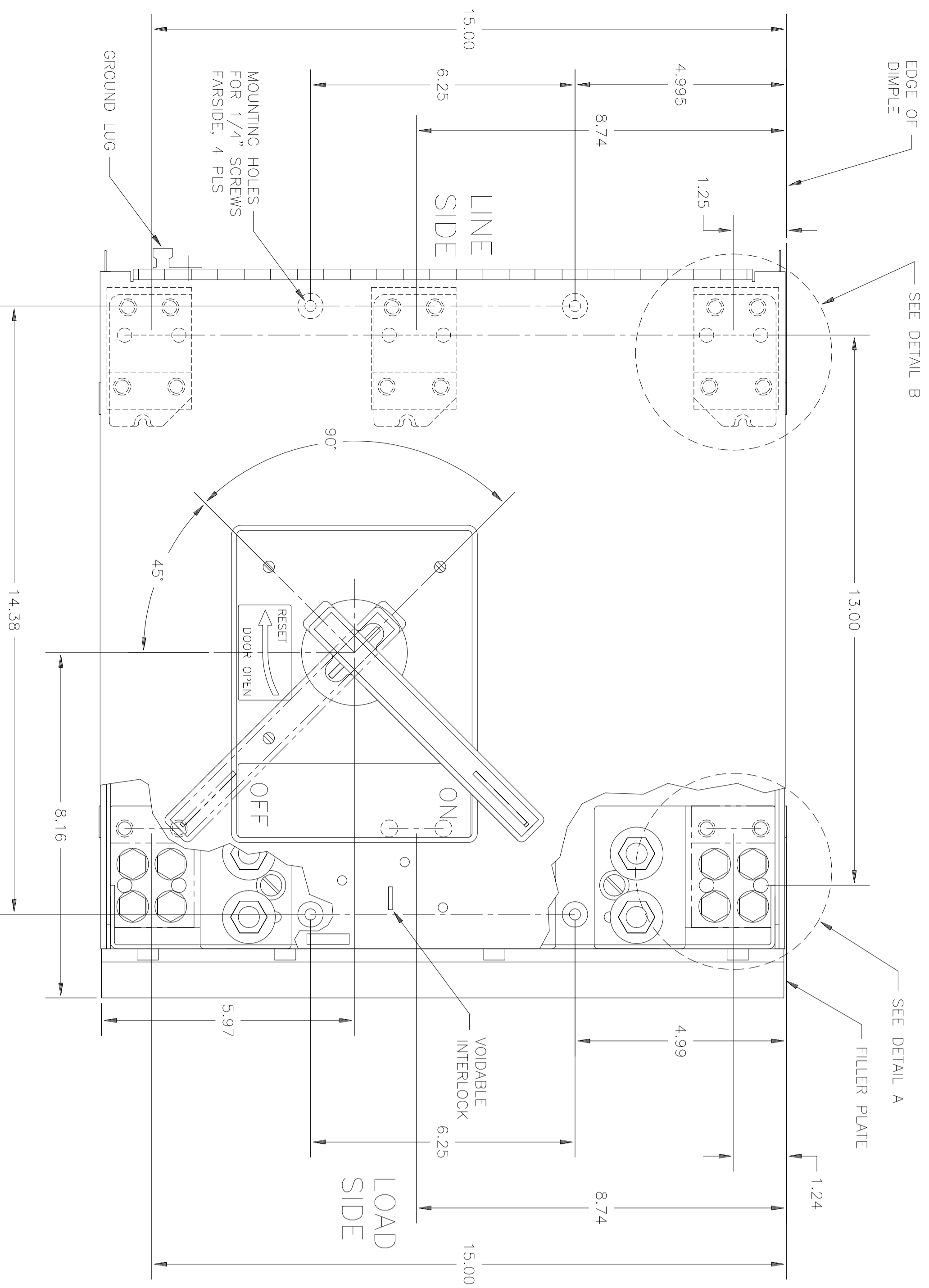
**Wire Connectors— HCP Horizontal Devices**

| AMPERE RANGE | STANDARD MECHANICAL CONNECTORS | OPTIONAL MECHANICAL CONNECTORS                      |
|--------------|--------------------------------|---|
| 1200 - 800   | T44H500                        | HCPCLP , T43H750                                    |
| 800 - 600    | T43K500                        | T44H500, TC3K350, TC2K500, TA2K500 HCPCLP , T43H750 |
| 600 - 400    | TA2K500                        | T44H500, T43K500, TC3K350, TC2K500 HCPCLP , T43H750 |
| 400          | TA2K500                        | T44H500, T43K500, TC3K350, TC2K500 HCPCLP , T43H750 |

HCPCLP IS THE COMPRESSION LUG ADAPTOR KIT.

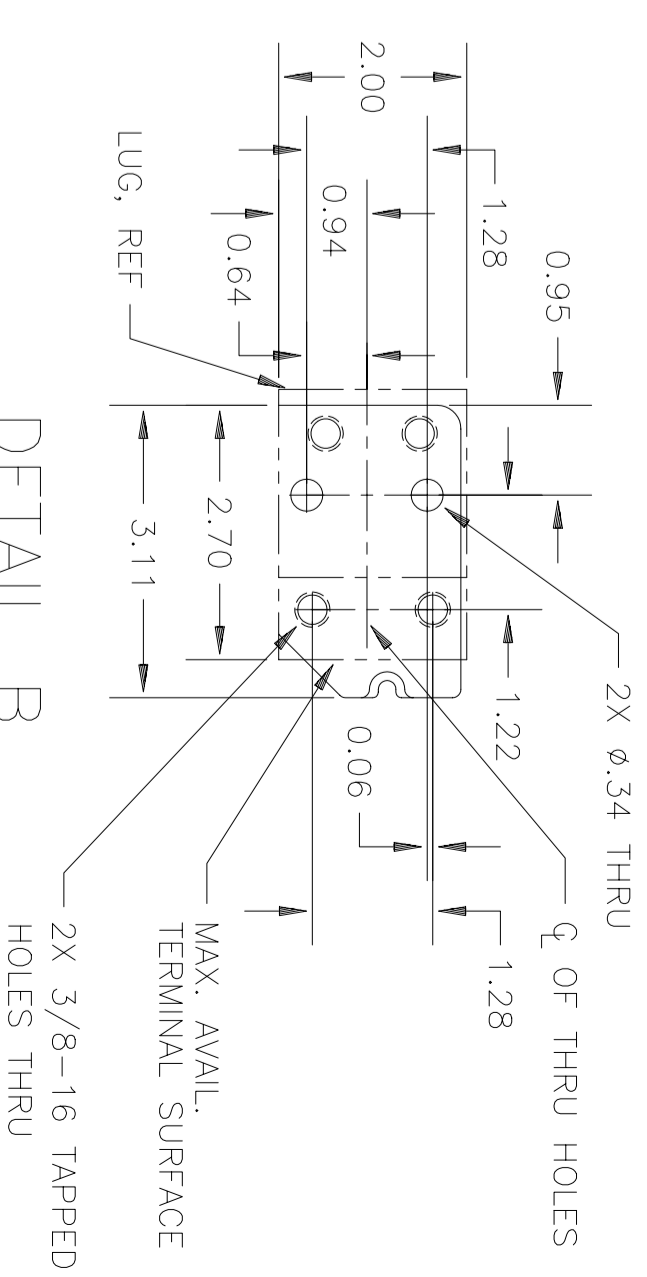
**Handle Forces & Shipping Weight— Sentron HCP Switches**

|                             |         |                           |
|-----------------------------|---------|---------------------------|
| HANDLE FORCE — OFF TO ON    | 40 LBS. | SHIPPING WEIGHT — 75 LBS. |
| HANDLE FORCE — ON TO OFF    | 40 LBS. |                           |
| HANDLE FORCE — OFF TO RESET | 45 LBS. |                           |



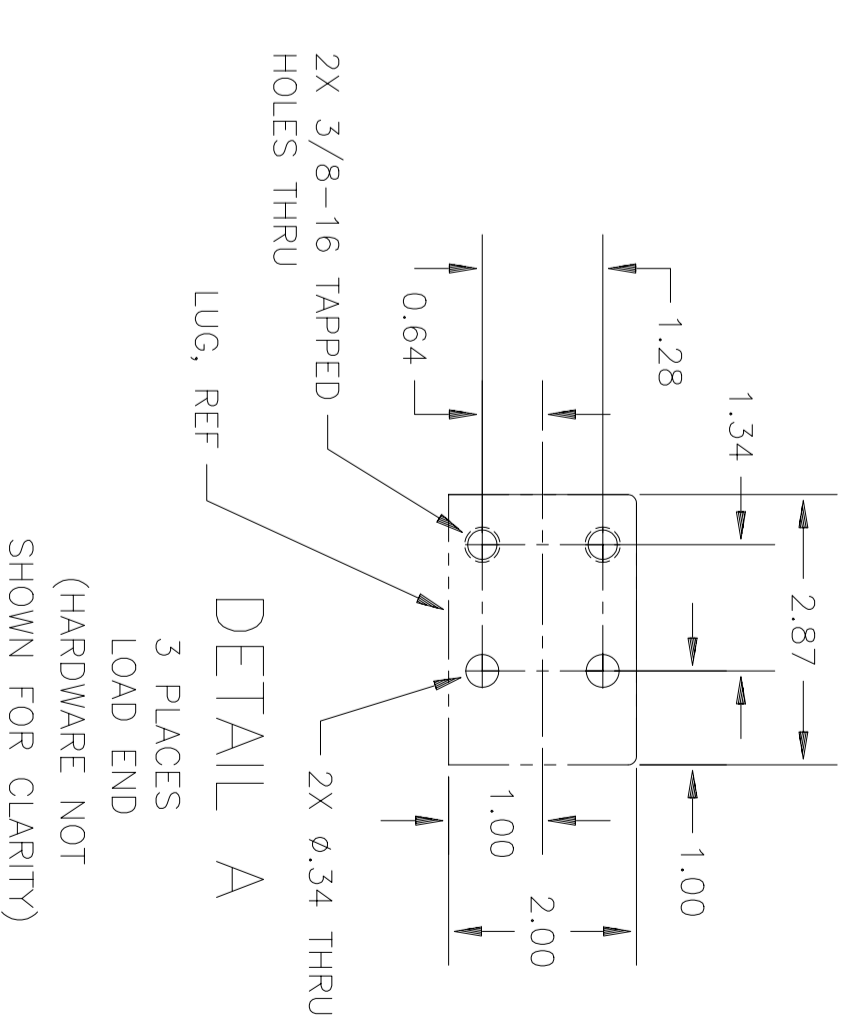
**DETAIL B**

3 PLACES  
LINE END



**DETAIL A**

3 PLACES  
LOAD END  
(HARDWARE NOT SHOWN FOR CLARITY)



CONFIDENTIAL— PROPERTY OF Siemens Energy & Automation, Inc.  
**Siemens Energy & Automation, Inc.**

UNLESS OTHERWISE SPECIFIED DIMENSIONS ARE IN INCHES DO NOT SCALE DRAWING  
TOLERANCES  
.XX ± .01  
.XXX ± .005  
ANGULAR ± 1°  
HARD ANGLE PER  
DATE 6/16/95  
DATE  
SCALE 1/2  
ACAD FILE 800911.DWG  
SHEET 1 OF 2

| REV | DESCRIPTION  | DATE    | APPROVED |
|-----|--|---------|----------|
| 1P  | SHEET 1: 7.23 WAS 7.19 AT D5. ADDED GROUND LUG AT A8. TABLE CHANGES— WIRE CONN TABLE: UNDER OPTIONAL MECHANICAL CONNECTORS COLUMN— HCPCLP WAS CN1200 (FOR 1200—800A), WAS COM800 (FOR 800—600A), WAS CCL600 (FOR 600—400A & 400A).<br>ADDED NOTE AT C3 & C4.<br>SHEET 2: ADDED GROUND LUG AT D8. WIRE CONN TABLE: UNDER OPTIONAL MECHANICAL CONNECTORS COLUMN— HCPCLP WAS CN1200 (FOR 1200—800A), WAS COM800 (FOR 800—600A), WAS CCL600 (FOR 600—400A & 400A).<br>ADDED NOTE AT B2 & B3. | 3/28/96 | PRU      |

REGULAR RELEASE TO OHIO PRODUCTION ON SH 1 OF 2 & 2 OF 2:  
ALL T44H500\* WAS TA48500\*, ADDED ILLUS. OF HOLES OF LINE BUS PART NO. 800886403. ON SH 2 OF 2: DETAIL C, ADDED DIMS 1.88 & 0.14, REVISED DIM 3X 3/8-16 TAPPED WAS 2X ...; DETAIL D, ADDED DIMS 1.00, 1.4 & 1.875. REVISED DIM 4X 3/8-16 TAPPED WAS 2X ...  
DEC 18, 96 M. ELSON  
EEN 18697 REVISE CONFIGURATION OF INTERLOCK SLOT TO BE VERTICAL.  
5/15/03 CS/HAER

