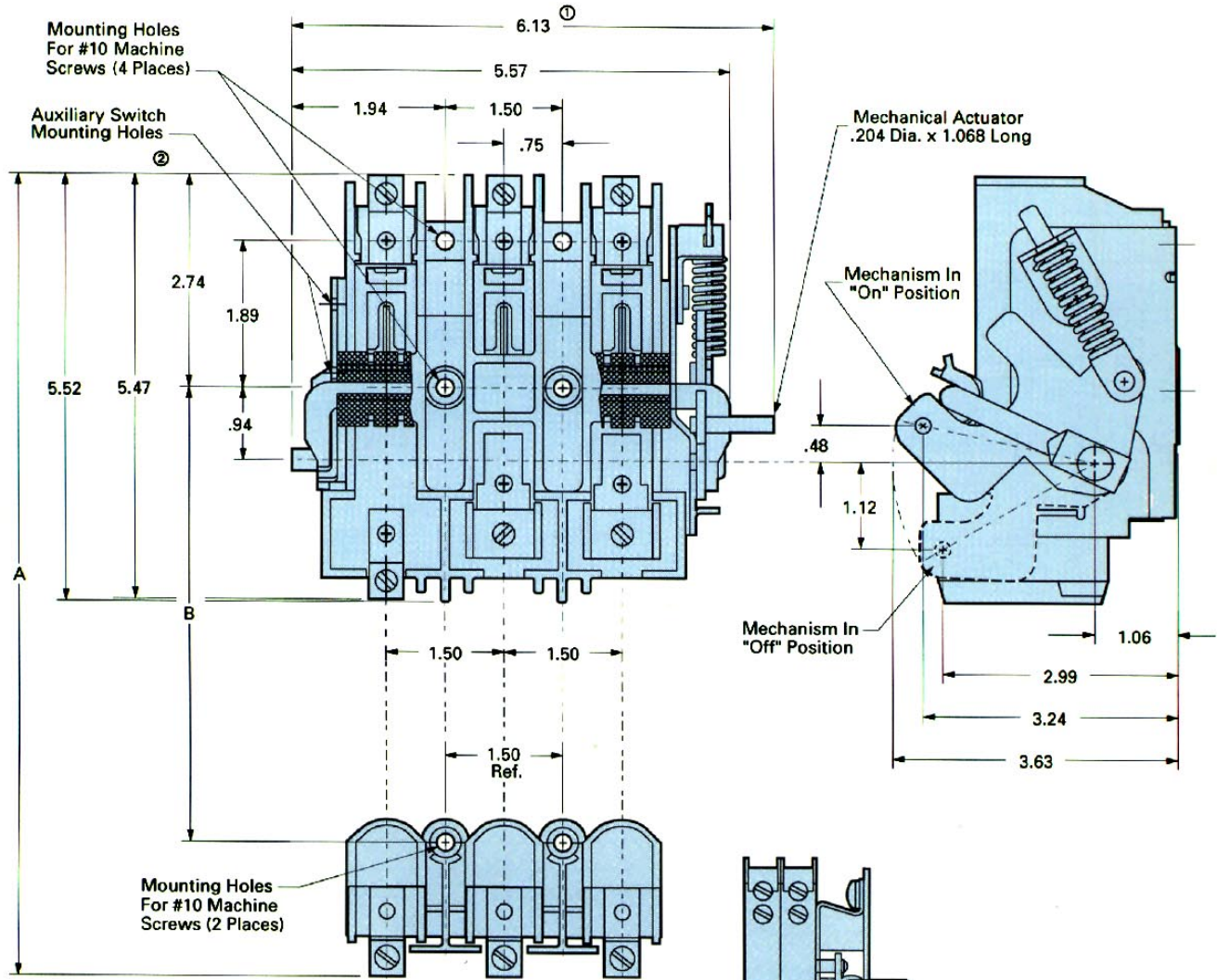
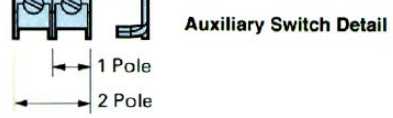


30/60A Motor Control Switch Outline Drawing



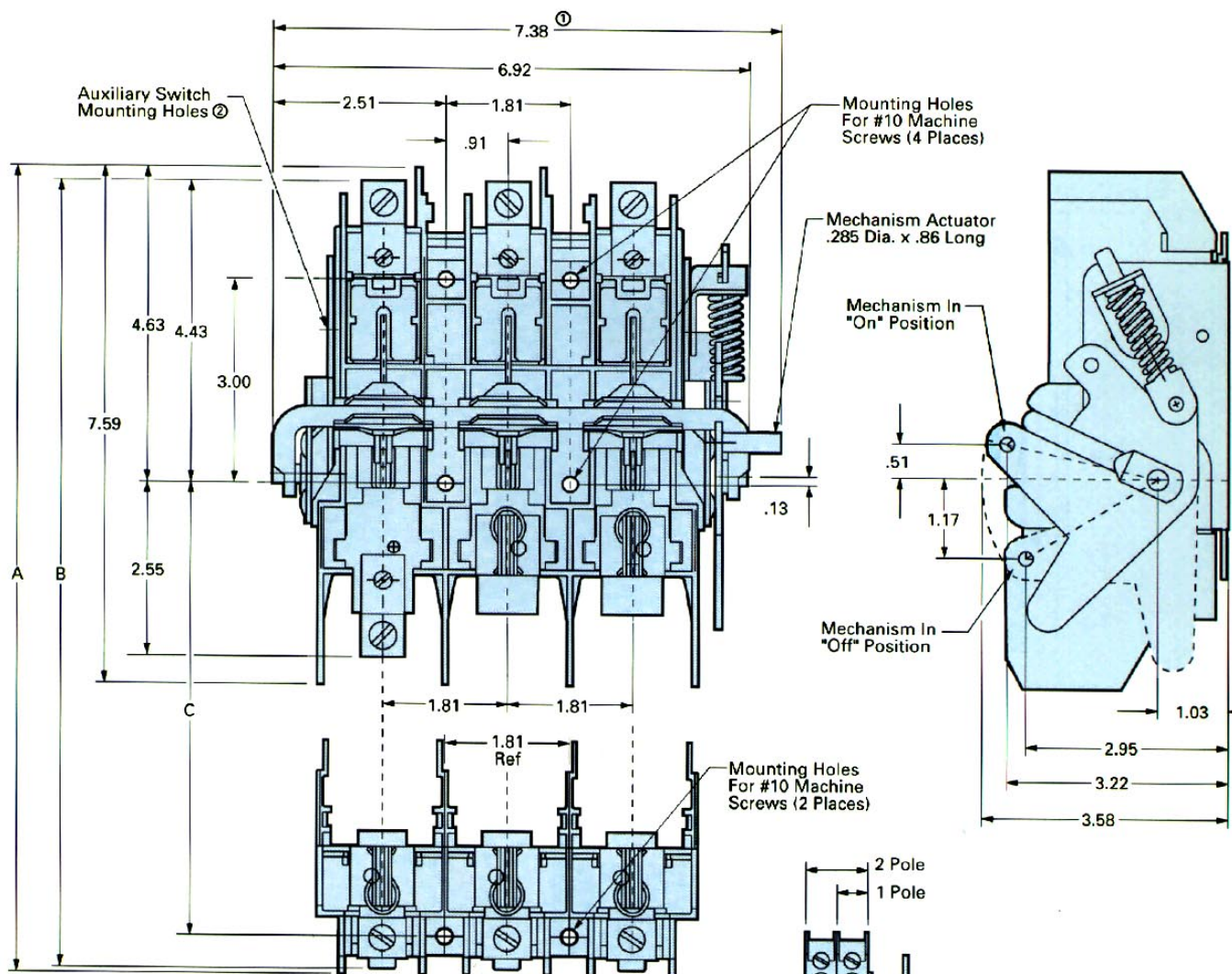
Dimensional Data for Fused Applications (inches)

Base Switch Catalog Number	Size	A	B	Fuse Class
MCS603	30A/240V	8.11	3.63	H,K,R
	30A/600V	10.11	5.63	H,K,R
	30A/600V	8.48	4.00	J
MCS606	60A/240V	7.86	3.38	H,K,R
	60A/600V	10.36	5.88	H,K,R
	60A/600V	8.36	3.88	J



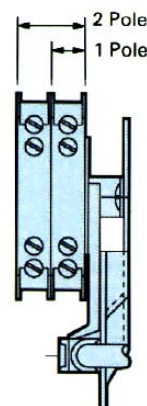
① Overall Width Using Auxiliary Switch
Single Pole - 7.18"
Double Pole - 7.63"
② Auxiliary switch mounts on opposite side from mechanism.

100A Motor Control Switch Outline Drawing



Dimensional Data for Fused Applications (inches)

Base Switch Catalog Number	Size	A	B	C	Fuse Class
MCS610	100A/240V	11.85	11.41	6.66	H,K,R
	100A/600V	13.85	13.41	8.66	H,K,R
	100A/600V	10.60	10.16	5.41	J



Auxiliary Switch Detail

- ① Overall Width Using Auxiliary Switch
Single Pole - 7.56"
Double Pole - 8.01"
- ② Auxiliary switch mounts on opposite side from mechanism.