

MATERIAL		TYPE	REP	PART NAME	REV	DATE	BY	APP	CHK	DATE	SCALE	SHEET NO.	TOTAL SHEETS
P	M			OUTLINE DIMS. ANSI F53 3WL		09-05-03				01	32X	1	2

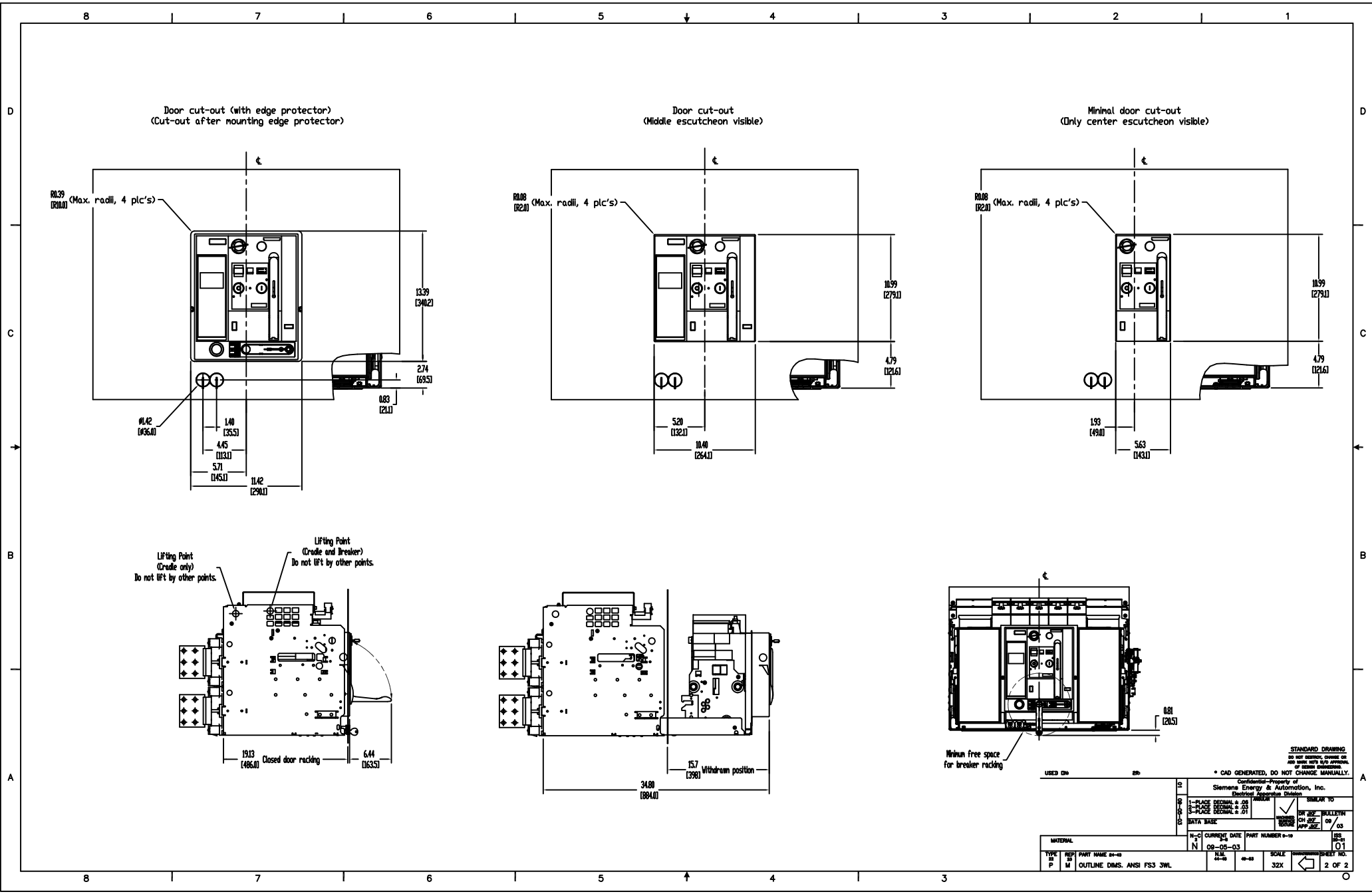
1-PLACE DIMENSION LINE 2-PLACE DIMENSION VALUE 3-PLACE DIMENSION UNIT	DIM. UNIT: MILLIMETER DIM. PRECISION: 0.01 DIM. DECIMALS: 01	DIM. UNIT: MILLIMETER DIM. PRECISION: 0.01 DIM. DECIMALS: 01
---	--	--

STANDARD DRAWING
DO NOT REVISION, REVISION OR ADD DIMENSIONS WITH THIS APPROVAL OF DIMENSIONS

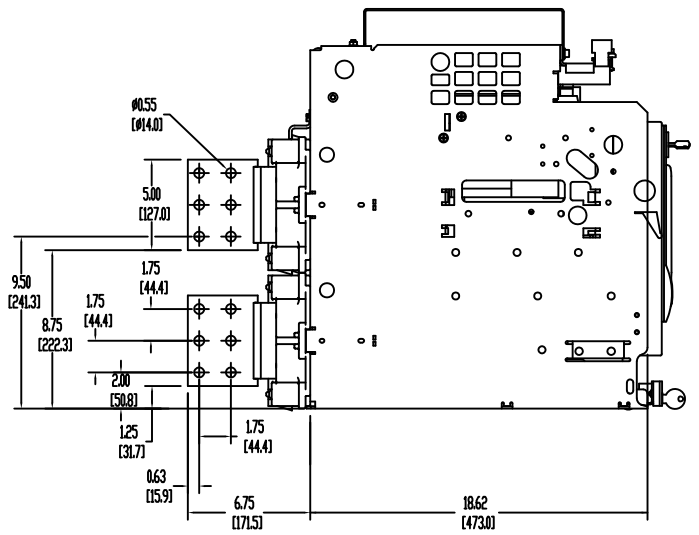
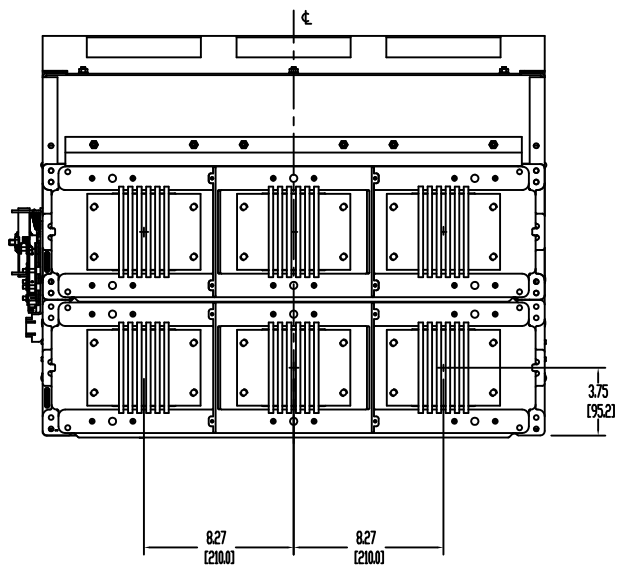
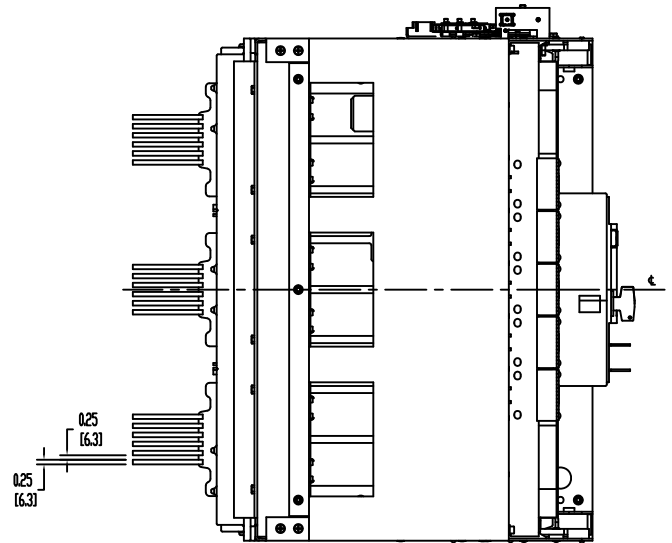
* CAD GENERATED, DO NOT CHANGE MANUALLY.

Confidential-Property of
Siemens Energy & Automation, Inc.
Electrical Apparatus Division

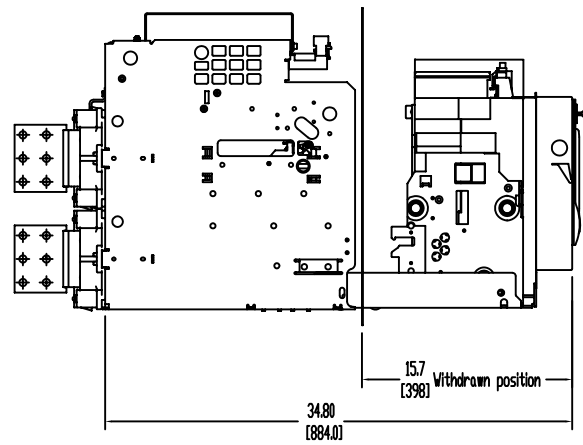
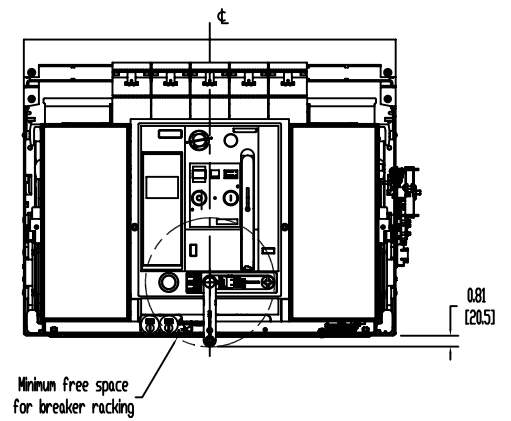
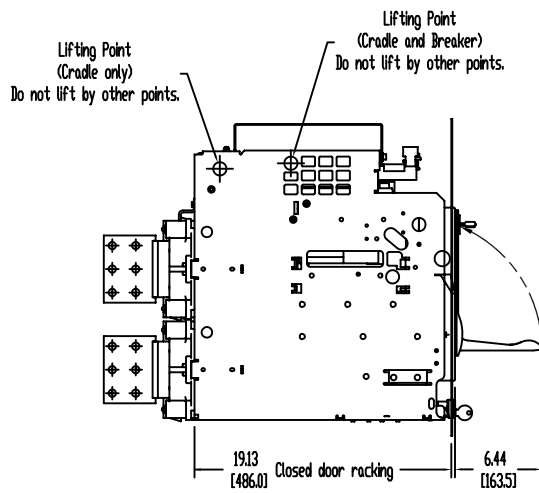
DATE: 09/03
APP: [Signature]
CHK: [Signature]



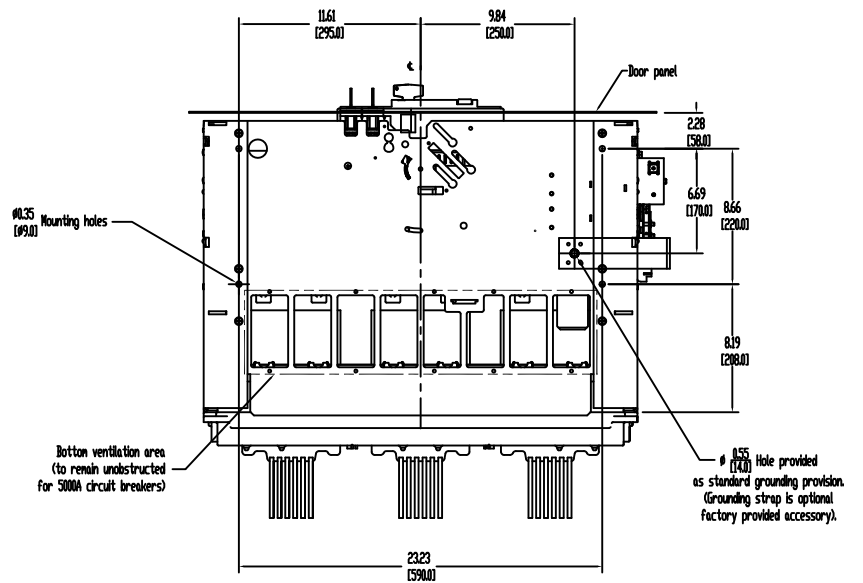
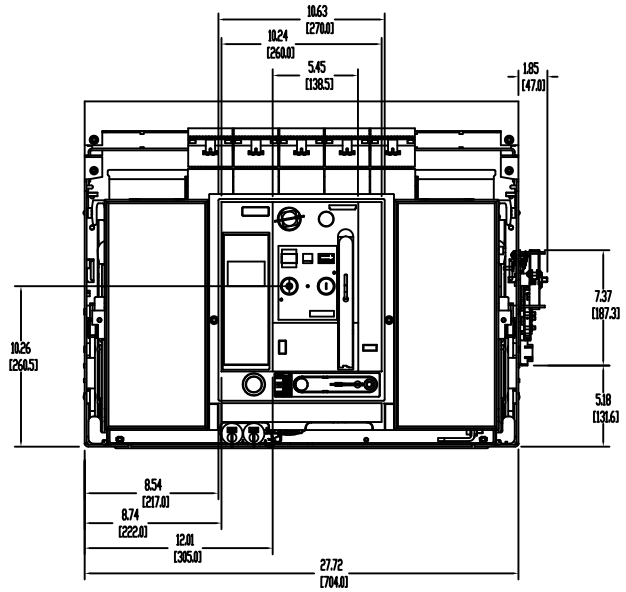
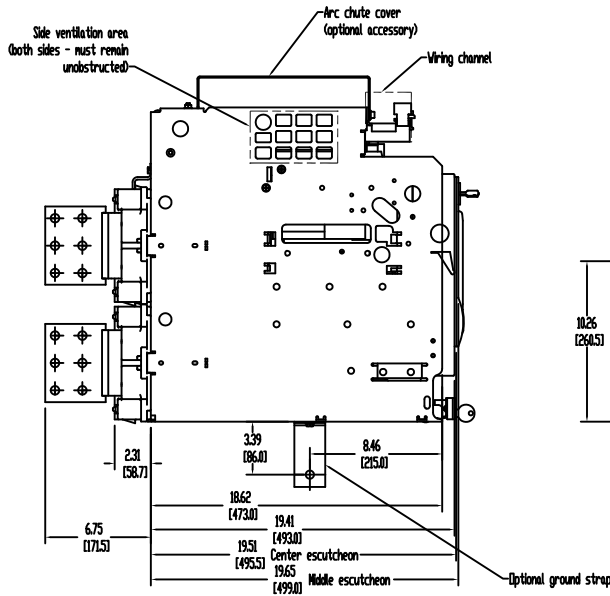
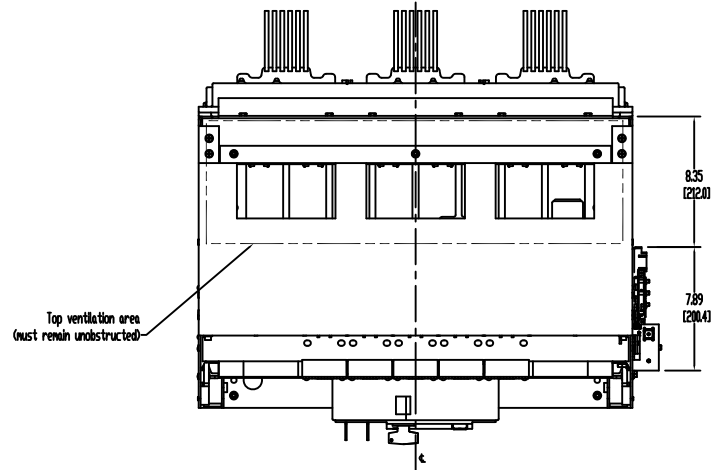
UL 1066 FSIII DRAWOUT CIRCUIT BREAKER GUIDE FRAME STANDARD BUS CONNECTIONS



UL 1066 FSIII DRAWOUT CIRCUIT BREAKER GUIDE FRAME

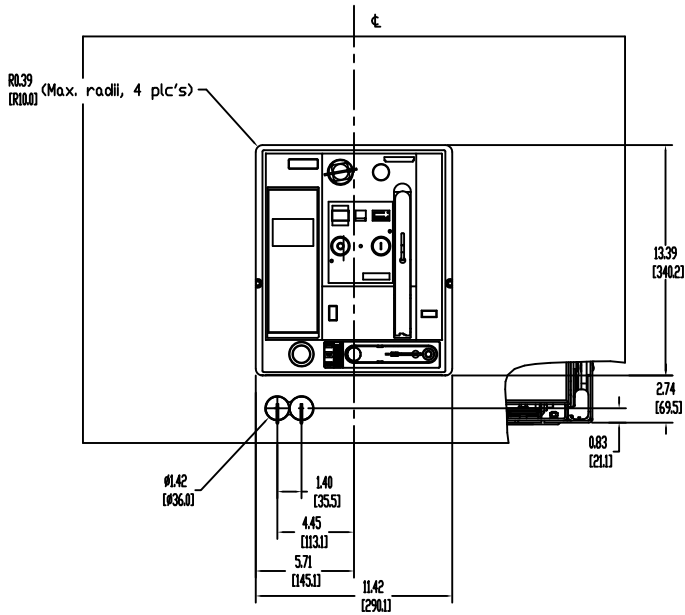


UL 1066 FSIII DRAWOUT CIRCUIT BREAKER GUIDE FRAME

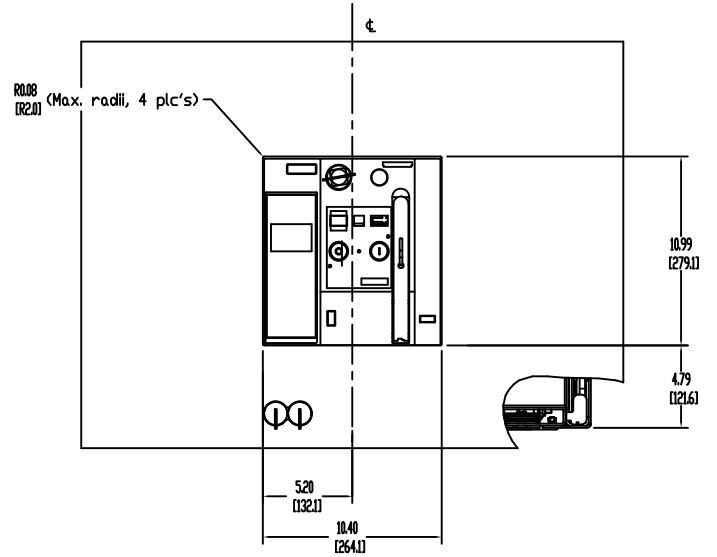


UL 1066 FSIII DRAWOUT CIRCUIT BREAKER GUIDE FRAME

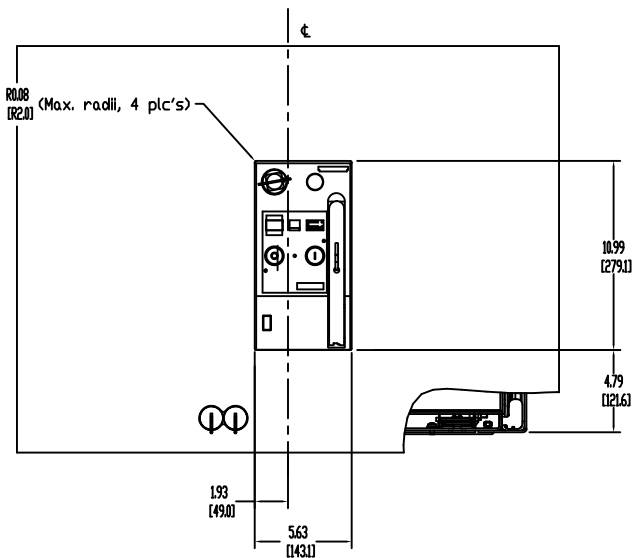
Door cut-out (with edge protector)
(Cut-out after mounting edge protector)



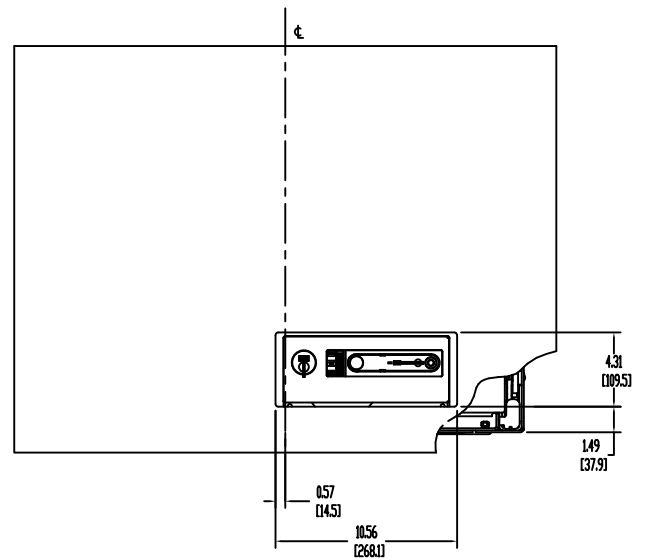
Door cut-out
(Middle escutcheon visible)

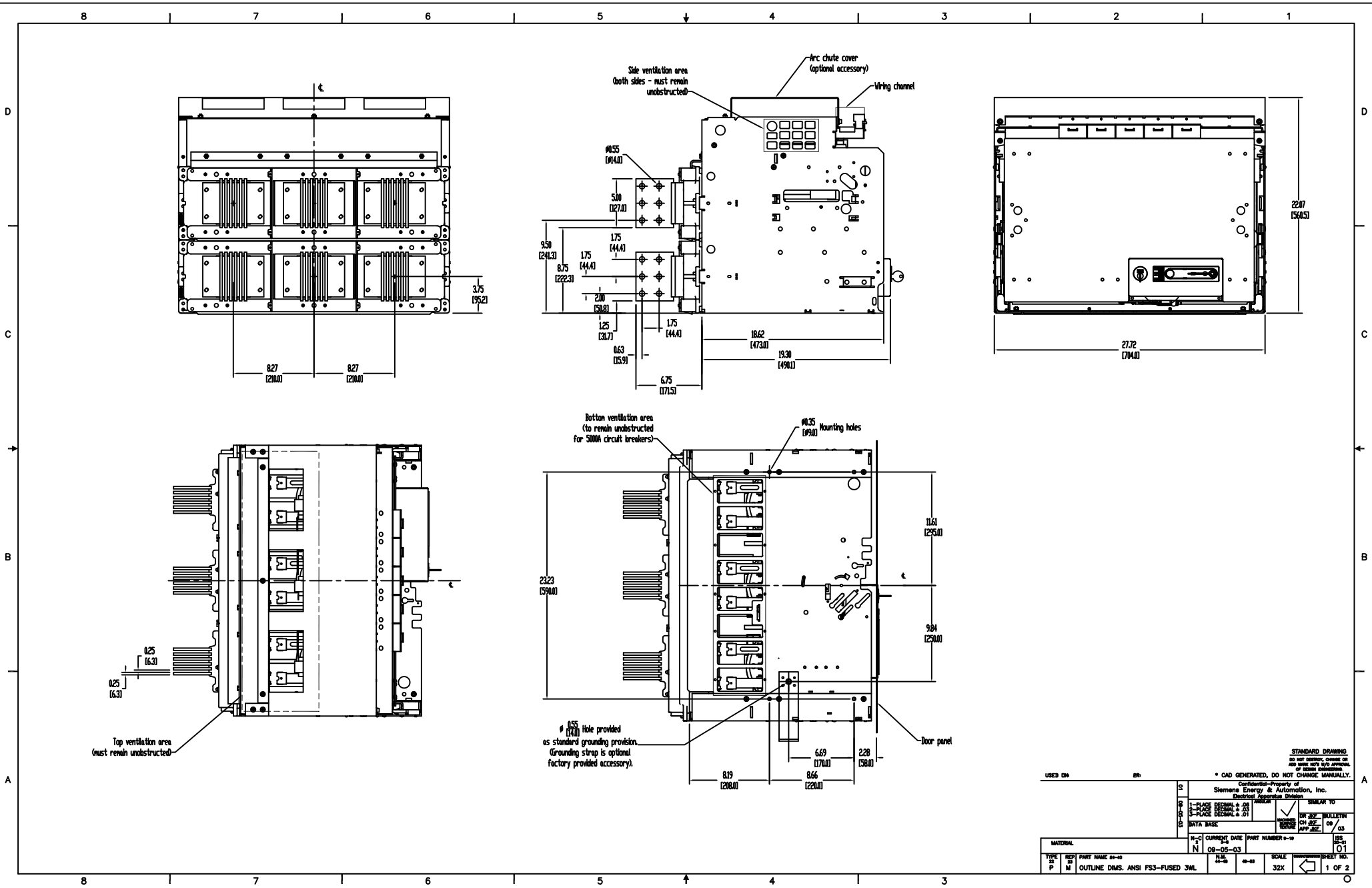


Minimal door cut-out
(Only center escutcheon visible)



Door cut-out (with edge protector)
Fuse Carriage





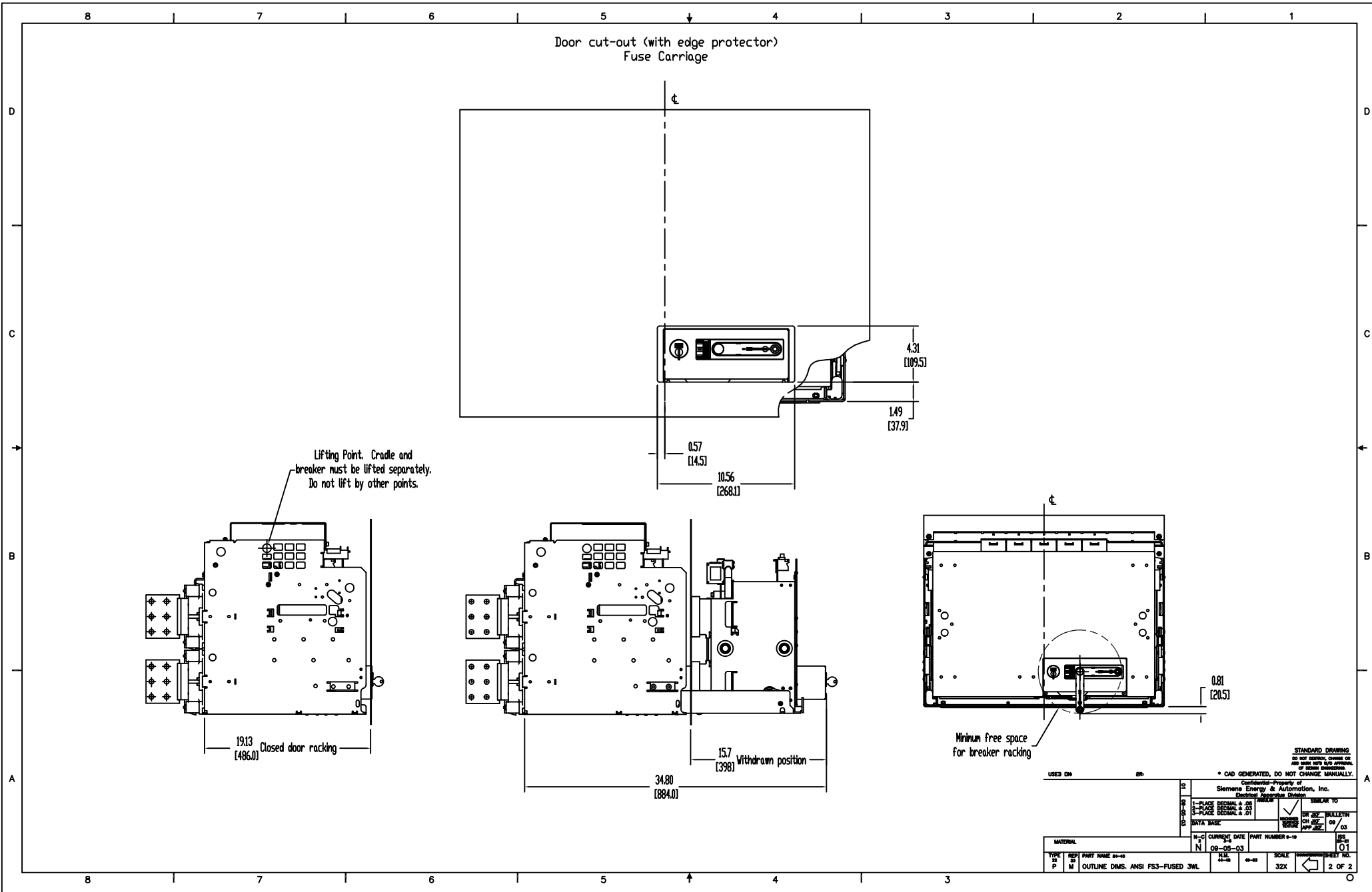
STANDARD DRAWING
 DO NOT REVISION, CHANGE OR
 ADD UNLESS WITH APPROVAL
 OF SIEMENS ENGINEERING

* CAD GENERATED, DO NOT CHANGE MANUALLY.

Confidential-Property of
 Siemens Energy & Automation, Inc.
 Electrical Apparatus Division

Q	1-PLACE DECIMAL ± .01	DRG NO.	BULLETIN
R	2-PLACE DECIMAL ± .03	CHKD BY	09 / 03
S	3-PLACE DECIMAL ± .01	INSPECTION	APPROVED
D	DATA BASE	DATE	09-05-03

DATE: 09-05-03
 PART NUMBER: 0-10
 SCALE: 32X
 SHEET NO.: 1 OF 2



STANDARD DRAWING
DO NOT REMOVE, REWELD OR
ALTER WITH OUT APPROVAL
OF SIEMENS

* CAD GENERATED, DO NOT CHANGE MANUALLY.

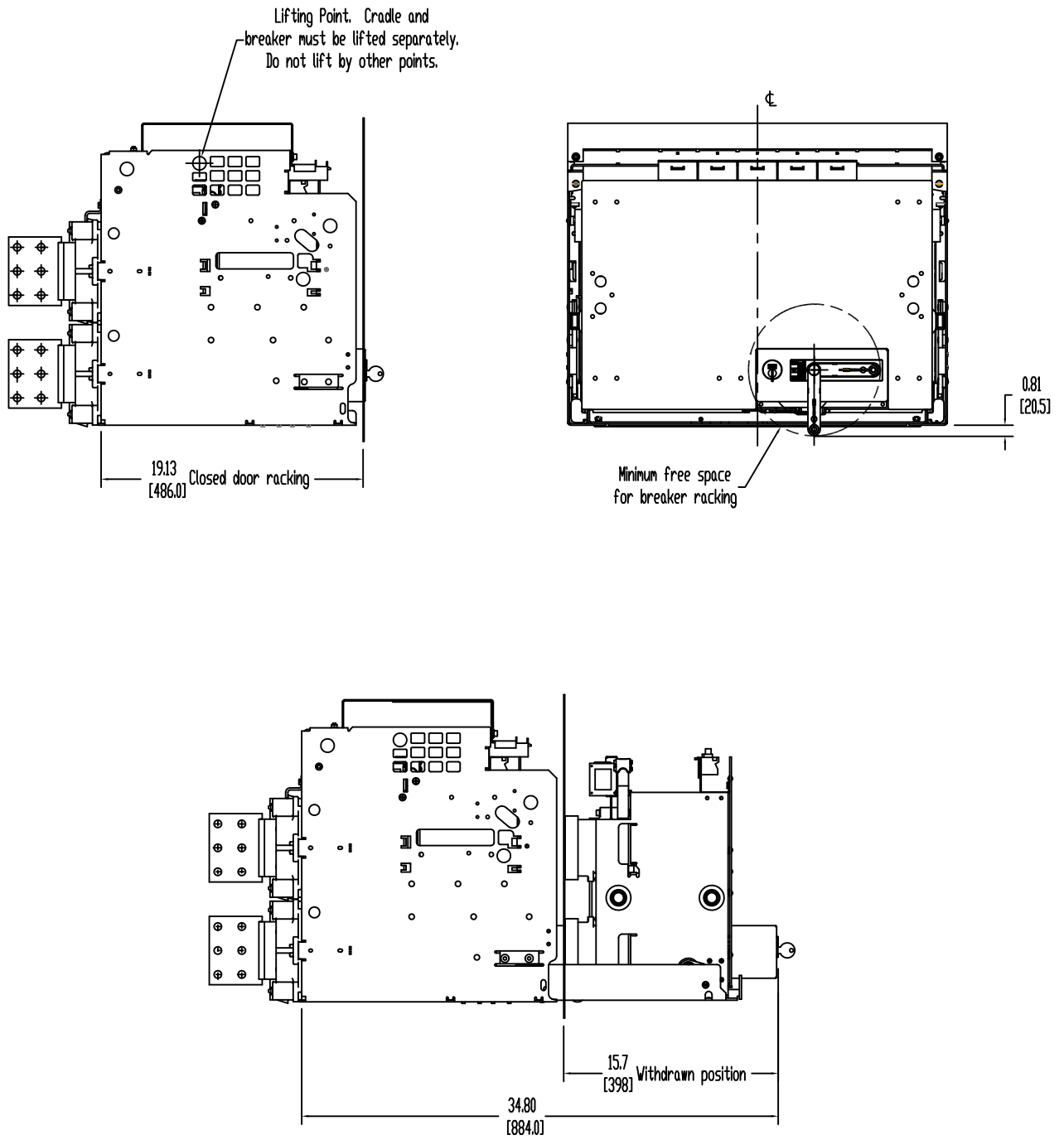
Confidential-Property of
Siemens Energy & Automation, Inc.
Electrical Apparatus Division

1-PLACE DECIMALS ± .001	2-PLACE DECIMALS ± .01	3-PLACE DECIMALS ± .001	4-PLACE DECIMALS ± .01
DATE	CHG. NO.	BY	CHK. BY
09/03	09/03		

USED ON	DR
DATE	09-05-03
CURRENT DATE	09-05-03
PART NUMBER	0-19
SCALE	32X
TYPE	P
REP	M
OUTLINE DIMS.	ANSI F33-FUSED 3ML

TYP	REP	PART NAME	0-19
P	M	OUTLINE DIMS.	ANSI F33-FUSED 3ML
DATE	09-05	REV	01
SCALE	32X	SHEET NO.	2 OF 2

UL 1066 FSIII DRAWOUT FUSE CARRIAGE GUIDE FRAME



UL 1066 FSIII DRAWOUT FUSE CARRIAGE GUIDE FRAME

