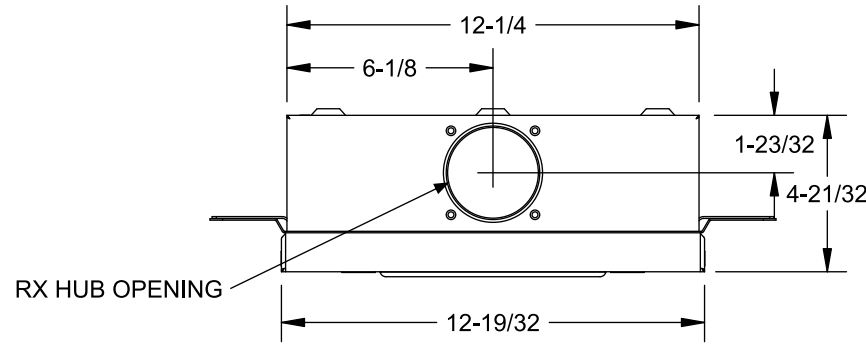


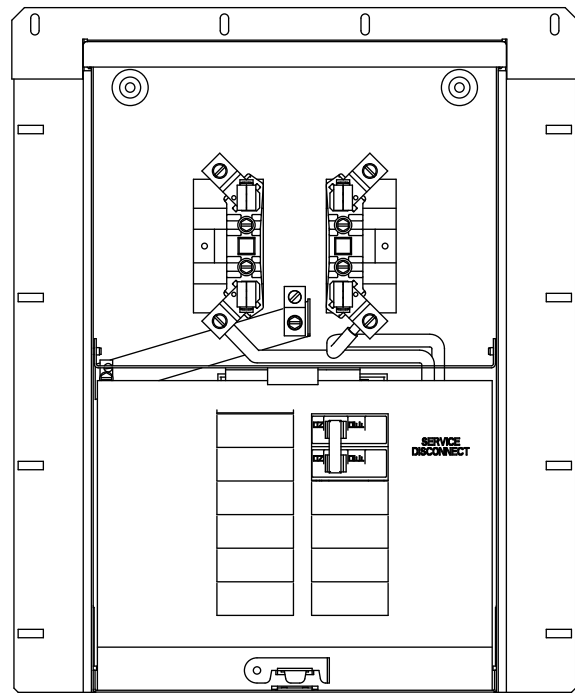
# Catalog Number: MC1020B1100FZ

## Features and Ratings

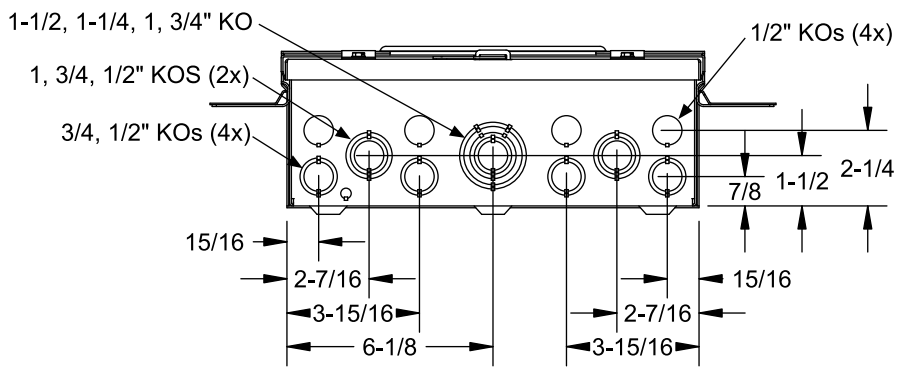
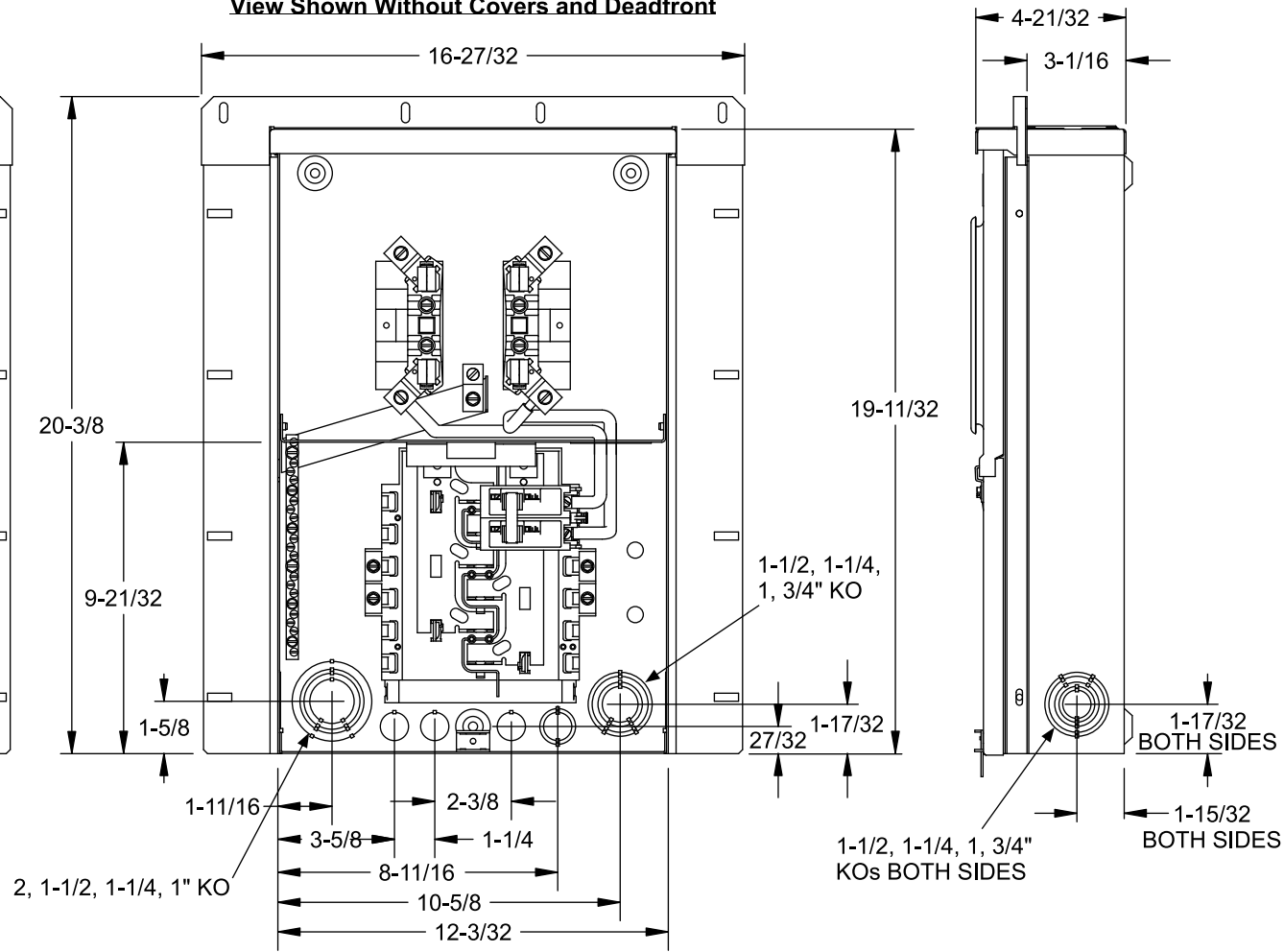
- Outdoor Enclosure (NEMA Type 3R)
- Ring Type Meter Cover
- Meter Socket Rating: 100A Continuous
- 100A Max, 1 Phase, 3 Wire, 120/240V~, 120/208V~
- 100A Main Breaker Installed
- 22,000 AIC Max. Rated (See Wiring Diagram for Details)
- (10) 1" Spaces, (20) Circuits Max.
- Overhead Service Entrance Only
- Flush Mounting



View Shown Without Covers



View Shown Without Covers and Deadfront

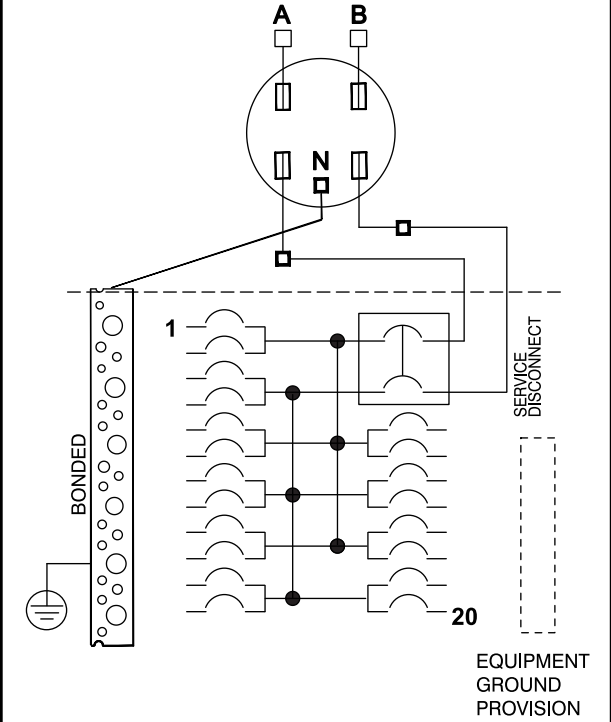


## Accessories

| Accessories      | Cat.        |
|------------------|-------------|
| No. Filler Plate | ECQF3       |
| Equip Grd Bars   | "ECLX" Type |

| Trade size (in)                  | Catalog number |
|----------------------------------|----------------|
| <i>RX Type Hub (top endwall)</i> |                |
| 1 1/4"                           | EC38597        |
| 1 1/2"                           | EC38598        |
| 2"                               | EC38599        |
| 2 1/2"                           | EC38600        |
| RX Cover Plate                   | EC38595        |

## Schematic



Branch circuit conductors limited to #1 AWG, except limited to #3 AWG when leaving the enclosure through the center 6" of the bottom end wall.

| Terminal                           | Wire Size               | Torque   |
|------------------------------------|-------------------------|----------|
| A, B, N                            | 2/0 - #14               | 50 lb-in |
| Branch Breaker Terminals           | See Markings on Breaker |          |
| <b>NEUTRAL AND EQPT GROUND BAR</b> |                         |          |
| Small Terminals                    | 10 - 14 AWG             | 20 lb-in |
|                                    | 8 AWG                   | 25 lb-in |
|                                    | 6 AWG                   | 35 lb-in |
| Large Terminals                    | 10 - 14 AWG             | 35 lb-in |
|                                    | 8 AWG                   | 40 lb-in |
|                                    | 3 - 6 AWG               | 45 lb-in |

© 2012 Copyright Siemens Industry, Inc.

**SIEMENS**  
Siemens Industry, Inc.

## Meter Load Center Combination

Description:  
**100A, 10 Sp/20 Ckt, OH, Flush Mount**

KAM 10/12/12 Fam H DO NOT SCALE DRAWING Dwg. No. **MC1020B1100FZ**