

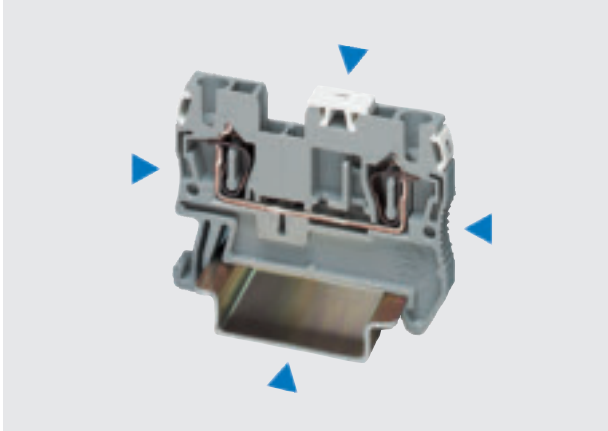
ALPHA FIX Terminal Blocks

ALPHA FIX 8WA and 8WH Terminals with Spring-Loaded Connection

Introduction to 8WH

2

Overview



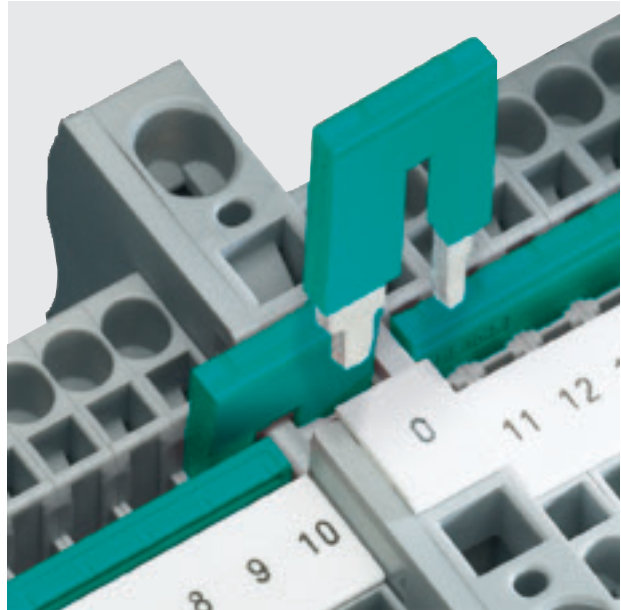
The space-saving design and conductor routing from above make spring-loaded terminals ideal for controlgear installations in which only little space is available.



The large and unambiguous marking in the center of the terminal is essential for ensuring reliable installation in minimum time. Each clamping point can be separately labeled in addition.



Spring-loaded terminals provide a large connection compartment for fast wiring of flexible and rigid conductors, including for conductors with the nominal cross-section and a fitted end sleeve.

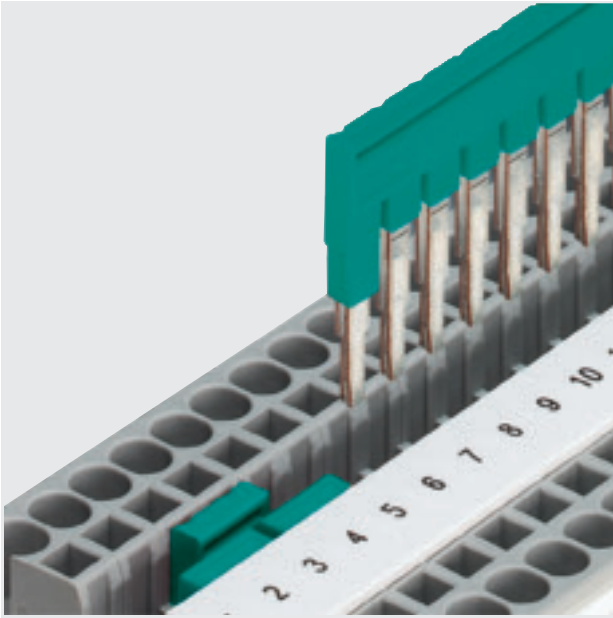


The reducing comb enables easy connection of terminals with various cross-sections. With the reducing comb, infeed blocks can be quickly assembled, e.g. to connect a 10 mm² spring-loaded terminal with a 2.5 or 4 mm² spring-loaded terminal.

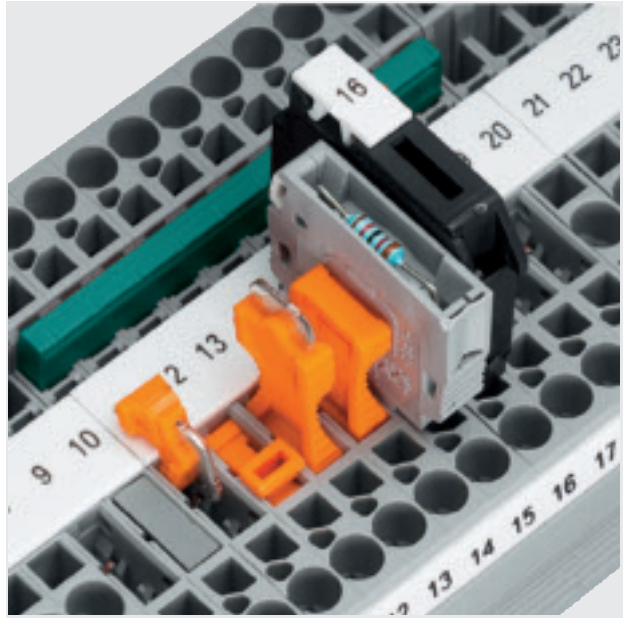
ALPHA FIX Terminal Blocks

ALPHA FIX 8WA and 8WH Terminals with Spring-Loaded Connection

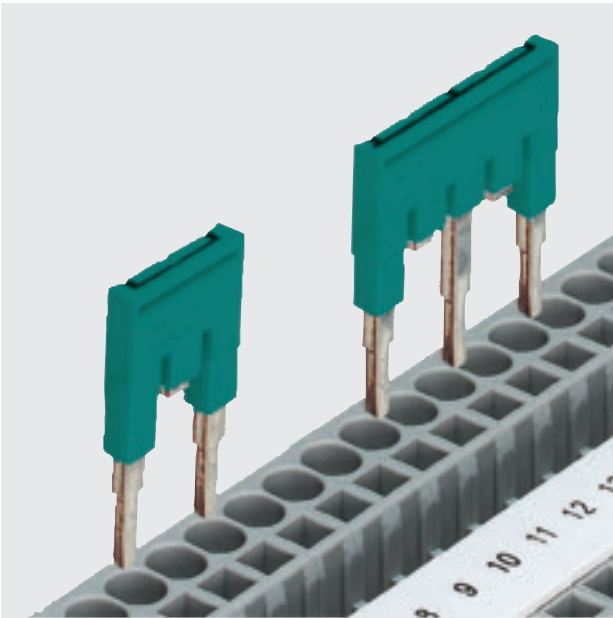
Introduction to 8WH



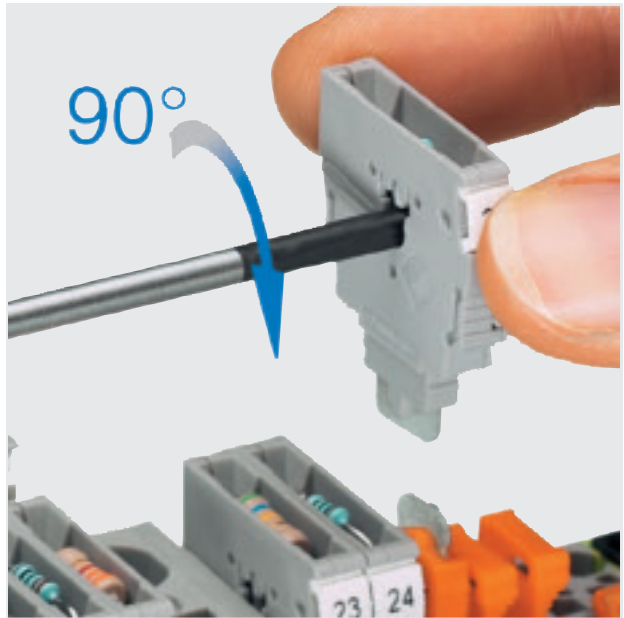
The 2- to 50-pole connecting combs considerably reduce the time needed for assembly and wiring as it enables up to 50 terminals to be connected in one operation.



In the isolating terminal's universal plug-in zones, isolated through-type connectors, isolating plugs, component connectors and fused connectors can be fitted.



Contact tabs can be removed from the standard comb in order to skip individual terminals. Two potentials can thus be carried in parallel by one terminal strip. The contact points can be marked in addition.



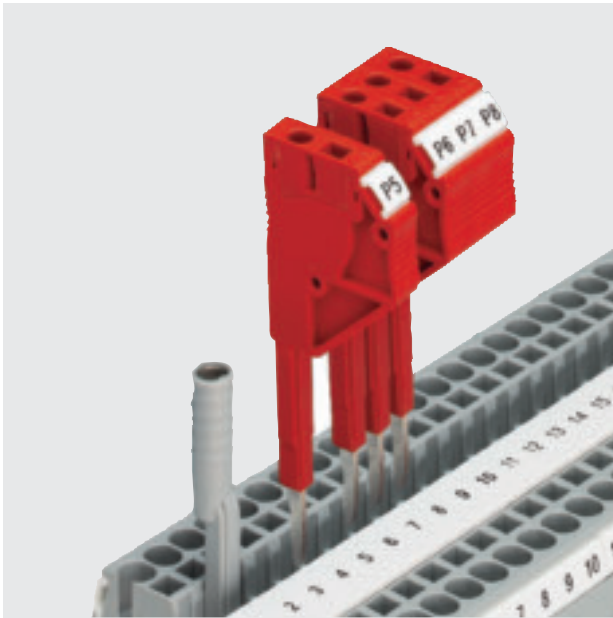
The component connector enables the convenient equipping with electronic components. Simple rotation with a screwdriver opens the contact points so that the component only needs to be inserted.

ALPHA FIX Terminal Blocks

ALPHA FIX 8WA and 8WH Terminals with Spring-Loaded Connection

Introduction to 8WH

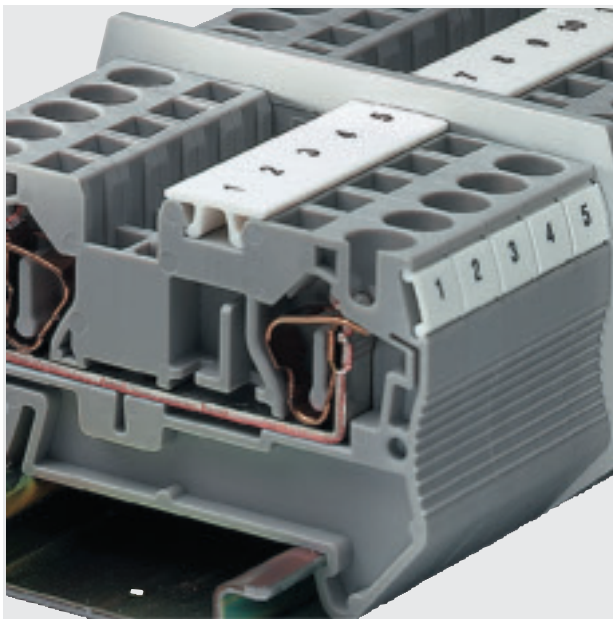
2



A comprehensive range of test accessories is also available for the spring-loaded connection series. With test adapters for Ø 4 mm test plugs and for side-by-side mounting, all measuring and testing jobs can be performed in minimum time.



Cover segments are used to cover the projecting terminal segments of three- and four-wire terminals when mounting two-wire terminals side-by-side. Fingerproof design is thus guaranteed.



The compartment barriers project beyond the contours of the terminals. They separate the groups both visually and electrically.