

Heavy Duty Double Throw Safety Switch

Type VBII, 400 & 600 Amp, Type 3R (Outdoor)

Standards and Ratings

- UL Listed under file #E4776
- Meets UL98 for switches and UL 50 for enclosures
- Meets NEMA Standard KS-1 for enclosed switches
- Meets NEC wire bending space requirements
- Rated 10,000 AIC with Class H or 200,000 AIC when protected by Class R, J or T fuses
- Suitable for use as Transfer Equipment on optional standby systems as defined by Article 702 of the NEC

- Suitable for use as service entrance equipment

Features

- Quick-make and break switching action
- Visible blade design
- Highly visible ON/OFF indication
- Modular design allows quick and easy replacement of parts
- Front removable lugs which can easily be converted to copper body or compression type lugs
- Handle is padlockable in the OFF position

General Information

Catalog Number	Ampere Rating	Max AC Volts	Description	Shipping Weight (lbs.)
DTNF225R ¹	400	240	Non-fusible, 2 Pole, 2 Wire	270
DTNF365R	400	600	Non-fusible, 3 Pole, 3 Wire	280
DTNF366R	600	600	Non-fusible, 3 Pole, 3 Wire	287

Note: All switches are also rated 250V DC max.

Horsepower Ratings ²

Catalog Number	240V 1 Ø	240V 3 Ø	480V 3 Ø	600V 3 Ø	250V DC
DTNF225R	50	125	—	—	50
DTNF365R	50	125	250	350	50
DTNF366R	50	200	400	500	50

Accessories

Catalog Number	Description
HA165678	Auxiliary Switch (1-NO & 1 NC)
HA265678	Auxiliary Switch (2-NO & 2 NC)
HG656	Equipment Ground Lug Kit
HG2656	Isolated Equipment Ground Lug Kit
HN678	Neutral Kit
HLC65678	Copper Lug Kit (1 lug per kit)
HCL65	Compression Lug Mounting Kit (2 kits/pole required, allows for (1) lug/Ø)

¹ This switch is UL Listed for application on grounded B phase systems.

² Dual horsepower ratings: Std - applies when non-time delay fuses are installed.
Max - applies when time-delay fuses are installed.

Product Specification Sheet HD400.13

Answers for industry.

SIEMENS

Product Specification Sheet #HD400.13 (page 2 of 2)

Replacement Parts

Catalog Number	Description
HNB65 1 2	Non-fusible Line Side Replacement Base 400A
HNB66 1 2	Non-fusible, Line Side Replacement Base 600A
HHD656	Replacement Handle/Handle Guard
HL65678 2	Replacement Lugs (1 lug per kit)

Mechanical Lug Wire Ranges

Description	Wire Range
Line, Load 400 A	1/0 AWG - 750 Kcmil or (2) 1/0 AWG - 250 Kcmil
Line, Load 600A	(2) 1/0 AWG - 500 Kcmil or (3) 1/0 - 250 Kcmil
Standard and 200% Ground	(2) #6 AWG - 250 Kcmil
Neutral	(2) 1/0 AWG - 500 Kcmil

Compression Lugs ³

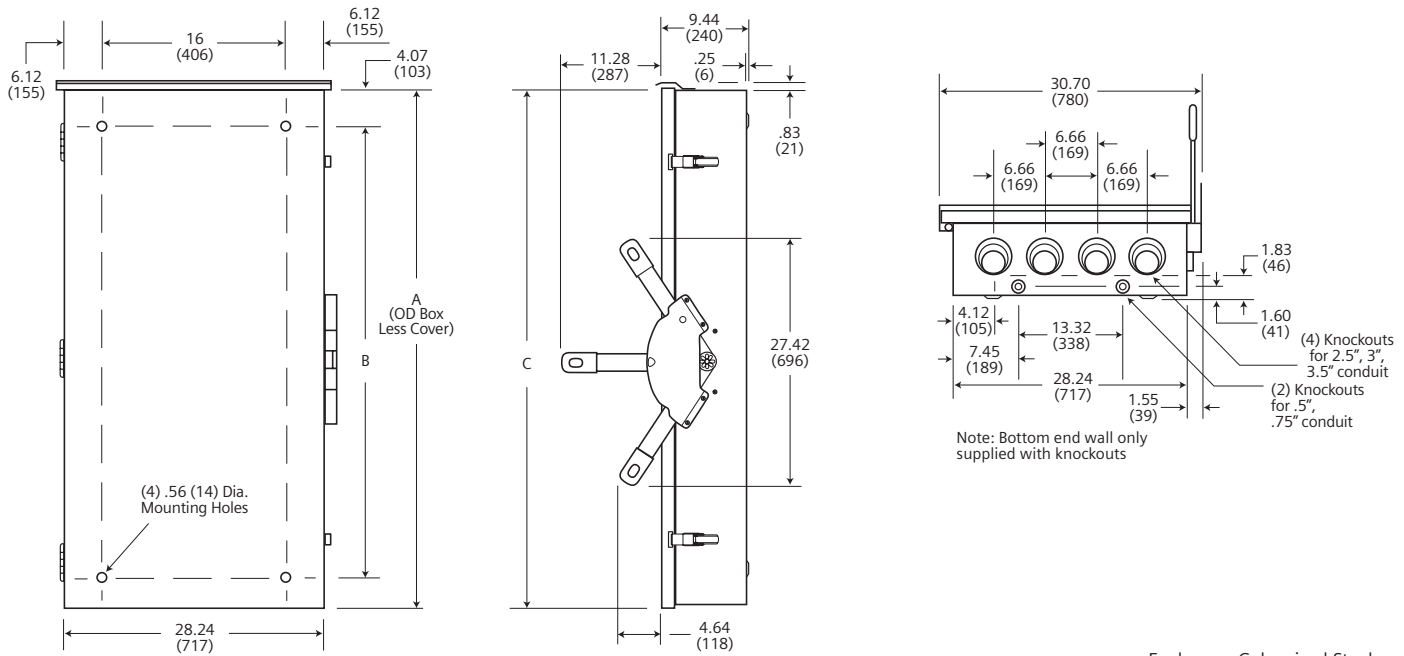
Wire Size	Burndy		Thomas-Betts		IlSCO	
	CU ONLY	CU/AL	CU ONLY	CU/AL	CU ONLY	CU/AL
2/0	YA26-N	YA26-A1	54160			IACL-2/0
	YA2C		54951BE			ACN-2/0
3/0	YA27-L Box	YA2-A3	54165-TB		CRB-3/0	IACN-3/0
	YA27		54965BE		CRB-3/0L	ACN-3/0
4/0	YA28-L Box	YA28-A3	54170	60150	CRB-4/0	IACL-4/0
	YA28		54970BE		CRB-4/0L	ACN-4/0
250 Kcmil	YA29-L Box	YA29-A1	54113	61156	CRA-250	IACL-250
	YA29		54913BE	60156	CRA-250L	ACL-250
300 Kcmil	YA30-L	YA30-A1	54114	61162	CRA-300	IACL-300
	YA30		54914BE	60162	CRA-300L	ACL-300
350 Kcmil	YA31-L	YA31-A1	54915BE	61165	CRA-350	IACL-350
	YA31			60165	CRA-350L	ACL-350
400 Kcmil	YA32-N		54116			
			54916BE			
500 Kcmil	YA34-L6			61171		
	YA34-N					IACL-500

Dimensions and Wire Bending Space

Catalog Number	Dimensions			Wire Bending Space	
	A	B	C	Top	Bottom
DTNF225R	57.78	49.75	58.46	14.00	14.00
DTNF365R	(1468)	(1264)	(1485)	(356)	(356)
DTNF366R					

- (2) required per pole.
- Lugs are not provided on Line and Load Replacement Base Assemblies. Order Lug Kits.
- If compression lugs are used, order compression lug kit HCL65678.

Dimension Drawing



Dimensions shown in inches and millimeters ().
Dimension shown accurate to ± 1/8 inch.

Enclosure: Galvanized Steel
Box .093 (12 Gauge)
Ends .053 (16 Gauge)
Finish - ANSI Grey #61 Paint