

# Heavy Duty Safety Switch with Pyle-National Interlocked Receptacle

## Type VBII, 30 Amp, Type 12 Industrial and Type 4X Stainless Steel

### Standards and Ratings

- UL Listed under file #E4776
- Meets UL98 for switches and UL50 for enclosures
- Meets NEMA Standard KS-1 for enclosed switches
- Meets NEC wire bending space requirements
- Rated 10,000 AIC with Class H fuses or 200,000 AIC with Class R and J fuses
- 12t rated (Amps<sup>2</sup> x Seconds = 50,000)
- 12X overload current rating exceeds standard 10X industry standard

- Double break visible blade design
- Highly visible ON/OFF indication
- Rugged installer friendly enclosure design
- Modular design allows quick and easy replacement of parts
- Front removable lugs which can easily be converted to copper body or compression type lugs
- Defeatable dual cover interlock
- Insertion or removal of the plug is prevented by the interlock linkage while the switch is ON
- Receptacle prevents operation of the switch if an incorrect plug is inserted
- Accepts Pyle-National plug # JPD-83046

### Features

- Quick-make and break switching action

### General Information

Catalog Number	Volts <sup>1</sup>	Description	Shipping Weight (lbs.)
<b>Type 12 Industrial <sup>2</sup></b>			
HF361JPN	600	3 Pole, 3 Wire, Fusible	23
HNF361JPN	600	3 Pole, 3 Wire, Non-Fusible	21
<b>Type 12 Stainless Steel</b>			
HF361SPN	600	3 Pole, 3 Wire, Fusible	23
HNF361SPN	600	3 Pole, 3 Wire, Non-Fusible	21

### Horsepower Ratings <sup>3 4</sup>

Catalog Number	3 Phase, 240V AC		3 Phase, 480V AC		3 Phase, 600V AC	
	Std	Max	Std	Max	Std	Max
HF361JPN	3 <sup>5</sup>	7½ <sup>5</sup>	5 <sup>5</sup>	15 <sup>5</sup>	7½ <sup>5</sup>	20 <sup>5</sup>
HF361SPN	3 <sup>5</sup>	7½ <sup>5</sup>	5 <sup>5</sup>	15 <sup>5</sup>	7½ <sup>5</sup>	20 <sup>5</sup>
HNF361JPN	—	10	—	20	—	30
HNF361SPN	—	10	—	20	—	30

### Accessories

Catalog Number	Description
HA161234	One Normally Open and Closed Auxiliary Switches
HA261234	Two Normally Open and Closed Auxiliary Switches
HA361234	Low Voltage Auxiliary Switch
HG61234	Equipment Ground Lug Kit (Factory installed) <sup>6</sup>
HP61	Fuse Puller (3 per kit)
HR612	600 Volt Class R Fuse Clip Kit (3 lugs per kit)
HLC612	Copper Lug Kit (9 lugs per kit)
SSH075	.75" Type 12 and 4/4X Hub

<sup>1</sup> Also rated 250V DC.

<sup>2</sup> Also rated 3R/3S for outdoor use.

<sup>3</sup> Dual horsepower ratings: Std - applies when non-time delay fuses are installed.  
Max - applies when time-delay fuses are installed.

<sup>4</sup> Also rated 5HP at 250V DC.

<sup>5</sup> Horsepower ratings listed also apply to high efficiency motors with no derating.

<sup>6</sup> Load side of ground kit is wired to the 3 phase, 4 wire grounded type receptacle.

## Product Specification Sheet HD30.20

Answers for industry.

**SIEMENS**

# Product Specification Sheet #HD30.20 (page 2 of 2)

## Replacement Parts

Catalog Number	Description
HFB612	Fusible Line Side Replacement Base
HBB612	Fusible Load Side Replacement Base
HNB612	Non-Fusible Line Side Replacement Base
HH6123	Replacement Handle/Handle Guard (HH6123S for Stainless)
HL612	Replacement Lugs (3 lugs per kit)
HM6123	Replacement Mechanism (HM6123S for Stainless)
1	Replacement Door

## Mechanical Lug Wire Ranges (60/75°C, Cu/Al)

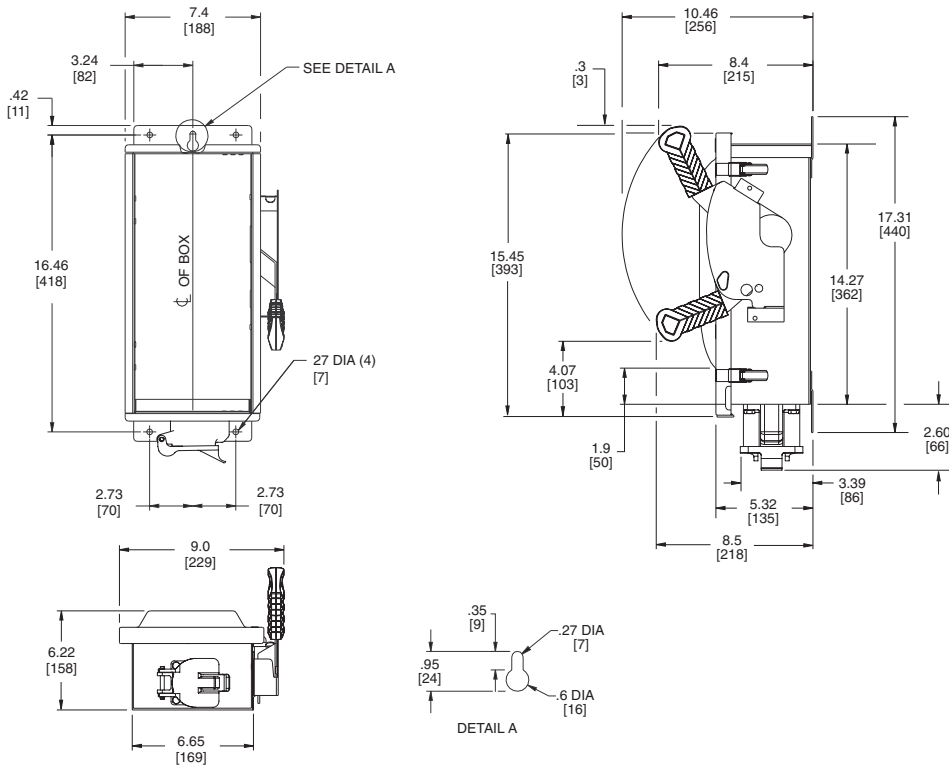
Description	Wire Range
Line, Load	#14-6 AWG (Cu/Al)
Neutral	
Ground 2	#14-4 AWG

- 1 Place "Door" at the end of the switch catalog number.  
 2 Load side of ground kit is wired to the 3 phase, 4 wire grounded type receptacle.

## Compression Lugs

Wire Size	Burdny		Thomas-Betts		IlSCO	
	CU Only	CU/AL	CU Only	CU/AL	CU Only	CU/AL
#14-10				60096 60097		
#8	YA8C-L BOX YA8C-L1 BOX		54104 54130	60101 60102 61102	CRA-8	ACL-8 ACN-8
#6				61107		

## Dimension Drawing



No knockouts in the enclosure.  
 Dimensions shown in inches and millimeters ( ).  
 Dimension shown accurate to ± 1/16 inch.

	LINE SIDE WIRE BEND
600V	3.02 (77)

Type 12 Enclosure: Galvanized Steel

.054 Thick (17 Gauge)

Finish: ANSI Grey #61 Paint

Type 12 Stainless Enclosure: 304 Stainless Steel

.055 Thick (17 Gauge)

30A Pyle-National Receptacle  
 JRC-430-INT-12