

Heavy Duty Double Throw Safety Switch

Type VBII, 100 Amp, Type 1 (Indoor) Enclosure

Standards and Ratings

- UL Listed under file #E4776
- Meets UL98 for switches and UL50 for enclosures
- Suitable for use as Transfer Equipment on optional standby systems as defined by Article 702 of the NEC
- Meets NEMA Standard KS-1 for enclosed switches (Type HD)
- Meets NEC wire bending space requirements
- Suitable for use as Service Equipment
- AIC Ratings

General Duty

10,000 AIC when protected by Class H or 100,000 AIC when protected by Class R, J or T fuses (fuse ampere rating must not exceed switch ampere rating)

Heavy Duty

10,000 AIC with Class H or 200,000 AIC when used with or protected by Class R, J or T fuses (fuse ampere rating must not exceed switch ampere rating)

Features

- Quick-make and break switching action
- Visible blade, double break construction
- Highly visible ON/OFF indication
- Modular design allows quick and easy replacement of parts
- Front removable lugs which can easily be converted to copper body or compression type lugs
- Defeatable dual cover interlock
- All copper current carrying parts ¹
- Tangential knockouts
- Handle is padlockable in OFF position

General Information

Catalog Number	Max AC Volts	Description	Shipping Weight (lbs.)
DTF323 ²	240	Fusible, 3 Pole, 3 Wire	45
DTF363 ²	600	Fusible, 3 Pole, 3 Wire	45
DTNF223	240	Non-fusible, 2 Pole, 2 Wire	36
DTNF323	240	Non-fusible, 3 Pole, 3 Wire	37
DTNF363	600	Non-fusible, 3 Pole, 3 Wire	37

Horsepower Ratings ³

Catalog Number	240V 1Ø		240V 3Ø		480V 3Ø		600V 3Ø		250V DC	
	Std	Max	Std	Max	Std	Max	Std	Max	Std	Max
DTF323	7½	15	15	30	—	—	—	—	20	—
DTF363	7½	15	15	30	25	60	30	75	20	—
DTNF223	—	15	—	40	—	—	—	—	—	20
DTNF323	—	15	—	40	—	—	—	—	—	20
DTNF363	—	15	—	40	—	75	—	100	—	20

¹ Lugs are aluminum alloy as standard. Optional copper body lugs are available.

² Fusible switches accept: Class H fuses as standard or Class R or T fuses with kit, Class J fuses (move load base).

³ Dual horse ratings: Std - applies when non-time delay fuses are installed.

Max - applies when time-delay fuses are installed.

Product Specification Sheet HD100.9

Answers for industry.

SIEMENS

Product Specification Sheet #HD100.9 (page 2 of 3)

Accessories

Catalog Number	Description
HA161234	Auxiliary Switch (1-NO & 1 NC) ¹
HA261234	Auxiliary Switch (2-NO & 2 NC) ¹
HA361234	Low Voltage Auxiliary Switch ¹
HG61234	Equipment Ground Lug Kit (two lugs provided)
HG261234	Isolated Equipment Ground Lug Kit
HP63	Fuse Puller (3 per kit, (2) kits required per switch)
HN263	Neutral Kit
HR63	Class R Fuse Clip Kit (3 fuse clips per kit, (2) kits required per switch)
HT23	240V Class T Fuse Clip Kit (2) required per pole
HT63	600V Class T Fuse Clip Kit (2) required per pole
HLC63	Copper Lug Kit (9 lugs per kit) ¹
HCL63	Compression Lug Neutral Barrier Kit

Replacement Parts

Catalog Number	Description
HBB63	Fusible Load Side Replacement Base (2) kits required per switch
HFB63	Fusible Line Side Replacement Base (2) kits required per switch
HNB623	Non-fusible Replacement Line Base (2) kits required per switch
HHD61234	Replacement Handle/Handle Guard
HL63	Replacement Lugs (3 lugs per kit)
HM6123	Replacement Mechanism (2) kits required per switch
2	Replacement Door

Mechanical Lug Wire Ranges (60/75°C, Cu/Al)

Description	Wire Range
Line, Load, Neutral	#14-1/0 AWG (Cu/Al)
Ground	#14-4 AWG

Compression Lugs (UL listed for field installation) ³

Wire Size	Burdny		Thomas-Betts		Ilsco	
	CU ONLY	CU/AL	CU ONLY	CU/AL	CU ONLY	CU/AL
#6	YA6C-L Box	YA6CA1	54105	61107	CRB-6	ACL-6
	YA6C		54905BE	60107	CRB-6L	
#4	YA4C-L BOX	YA4CA1	54106	61112	CRB-4	ACL-4
	YA4C		54906BE	60112	CRB-4L	
#2	YA2C-L2 BOX	YA2CA5	54107	61116	CRB-2	ACL-2
	YA2C				CRB-2L	
#1	YA1C-L2		54108	61122	CRB-1-14	
	YA1C		54947BE		CRA-1L	
1/0				61130		

¹ (2) required per switch (one for each of the two line bases).

² Catalog number is same as switch catalog number plus "DOOR" suffix.

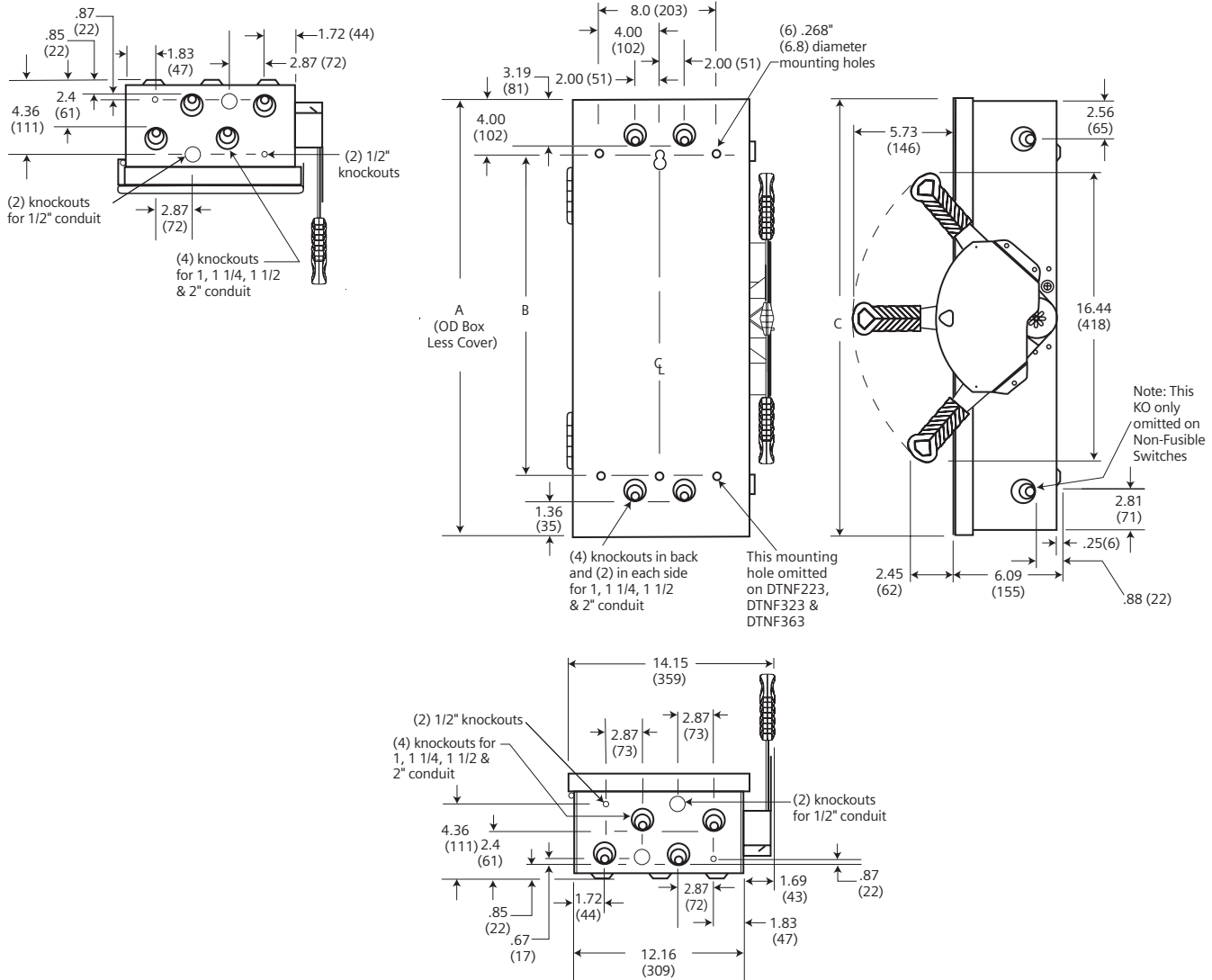
³ If compression lugs are used for the neutral, order compression lug neutral barrier kit HCL63.

Product Specification Sheet #HD100.9 (page 3 of 3)

Dimensions and Wire Bending Space

Catalog Number	Dimensions			Wire Bending Space	
	A	B	C	Top	Bottom
DTNF223					
DTNF323	27.60 (701)	19.36 (492)	28.09 (713)	6.12	6.12
DTNF363					
DTF323	36.41 (925)	28.11 (714)	36.96 (939)	6.12	8.12
DTF363					

Dimension Drawing



Dimensions shown in inches and millimeters ().
Dimension shown accurate to $\pm \frac{1}{16}$ inch.

Enclosure: Cold Rolled Steel .053 Thick (17 Gauge)
Finish – ANSI Grey #61 Paint