

# Heavy Duty Double Throw Safety Switches

## Type 3R (Outdoor)

### Standards and Ratings

- UL Listed under file #E5239
- Meets UL98 for switches and UL50 for enclosures
- Suitable for use as Transfer Equipment on optional standby systems as defined by Article 702 of the NEC
- Meets NEMA Standard KS-1 for enclosed switches (Type HD)
- Meets NEC wire bending space requirements
- Rated 10,000 AIC <sup>2</sup>
- Quick make and break mechanism
- Visible Blade, double break switching action
- Dual cover interlock
- Tangential knockouts
- Handle is padlockable in the OFF position

### General Information

Catalog Number	Volts	Amps	Description	Shipping Weight (lbs.)
NFR451DTK	600	30	4 Pole, Non-Fusible	45
NFR452DTK	600	60		45
NFR453DTK	600	100		45

### Horsepower Ratings <sup>1</sup> - 600 Volts

Catalog Number	1 Phase, 480V AC			3 Phase, 600V AC			250V DC
	240V	480V	600V	240V	480V	600V	
NFR451DTK	3	7½	10	10	20	30	5 (Std)
NFR452DTK	10	20	25	20	50	60	10 (Std)
NFR453DTK	20	40	50	40	75	100	20 (Std)

### Accessories

Catalog Number	Description
DS100GK	Equipment Ground Kit
DS200EK1	Auxiliary Switches (1-NO & 1-NC)
DS200EK2	Auxiliary Switches (2-NO & 2-NC)
ECHR075	0.75" Type 3R Hub
ECHR100	1.00" Type 3R Hub
ECHR125	1.25" Type 3R Hub
ECHR150	1.50" Type 3R Hub
ECHR200	2.00" Type 3R Hub

### Mechanical Lug Wire Ranges (60/75°C, Cu/Al)

Catalog Number	Description	Wire Range
NFR451DTK	Line, Load	#12-2 AWG
NFR452DTK	Line, Load	#14-2 AWG
NFR453DTK	Line, Load	#14-1/0 AWG

<sup>1</sup> Standard horsepower ratings applies when non-time delay fuses are installed.

<sup>2</sup> Rated 100,000 AIC when protected by Class R fuses. Fuse ampere rating must not exceed switch ampere rating.

## Product Specification Sheet H30.22

Answers for industry.

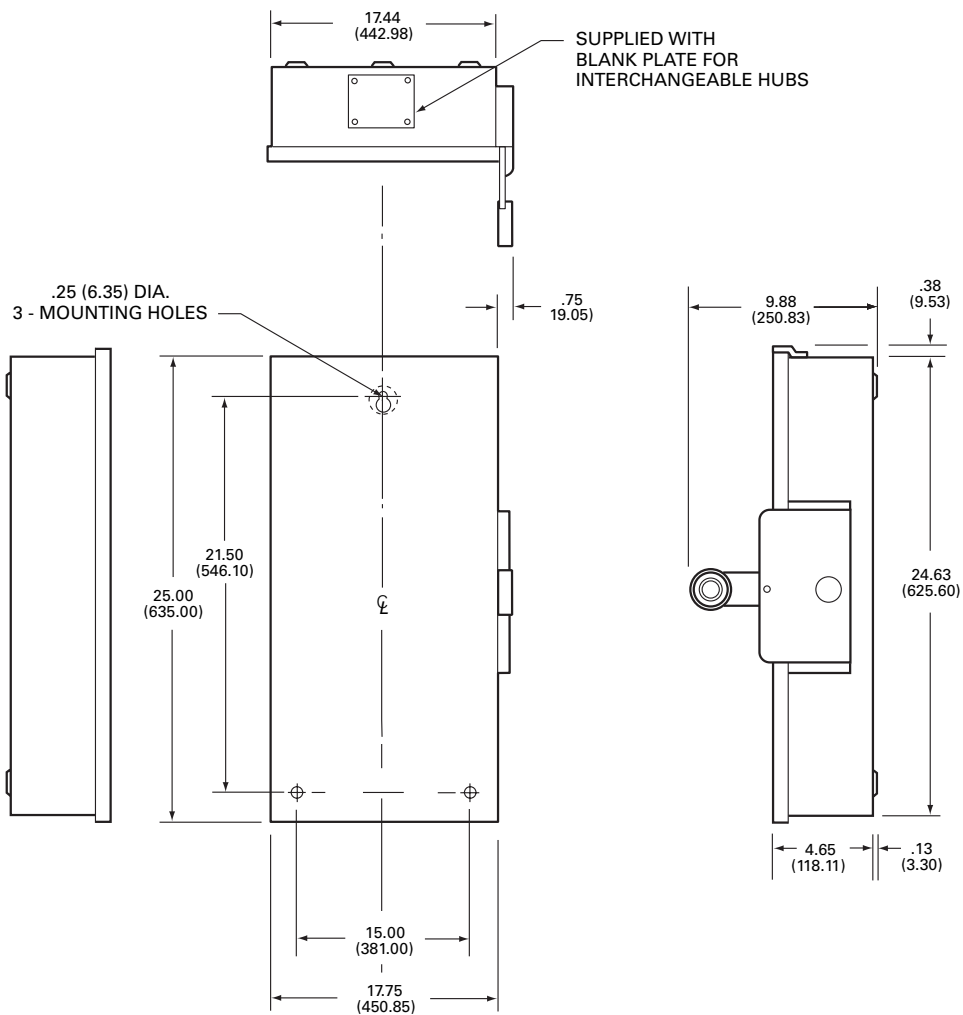
**SIEMENS**

# Product Specification Sheet #H30.22 (page 2 of 2)

## Compression Lugs

Wire Size	Burndy	Thomas-Betts	
	CU Wire	CU Wire	AL Wire
12-10	YAV10	—	—
8	YAV8C-L	54104	—
6	YAV6C-L1	54105	—
4	YA4C-L	54106	61112
2	YA2C-L	54107	61116
1	—	—	61122

## Dimension Drawing



No knockouts in the enclosures.  
 Dimensions shown in inches and millimeters ( ).  
 Dimension shown accurate to  $\pm \frac{1}{8}$  inch.