

Heavy Duty Double Throw Safety Switches

Type 3R (Outdoor)

Standards and Ratings

- UL Listed under file #E5239
- Meets UL98 for switches and UL50 for enclosures
- Suitable for use as Transfer Equipment on optional standby systems as defined by Article 702 of the NEC
- Meets NEMA Standard KS-1 for enclosed switches (Type HD)
- Meets NEC wire bending space requirements
- Rated 10,000 AIC ¹
- Quick make and break mechanism
- Visible Blade, double break switching action
- Dual cover interlock
- Handle is padlockable in the OFF position

General Information

Catalog Number	Volts	Amps	Description	Shipping Weight (lbs.)
NFR454DTK	600	200	4 Pole, Non-Fusible	85

Horsepower Ratings - 600 Volts

Catalog Number	1 Phase, 480V AC			3 Phase, 600V AC			250V DC
	240V	480V	600V	240V	480V	600V	
NFR454DTK	15	50	50	60	125	150	40 (Std)

Accessories

Catalog Number	Description
DS200GK	Equipment Ground Kit
DS200EK1	Auxiliary Switches (1-NO & 1-NC)
DS200EK2	Auxiliary Switches (2-NO & 2-NC)
SSH100	1.00" Hub
SSH150	1.50" Hub
SSH200	2.00" Hub

Mechanical Lug Wire Ranges (60/75°C, Cu/Al)

Description	Wire Range
Line, Load	#6-250 Kcmil

¹ Rated 100,000 AIC when protected by Class R fuses. Fuse ampere rating must not exceed switch ampere rating.

Product Specification Sheet H200.16

Answers for industry.

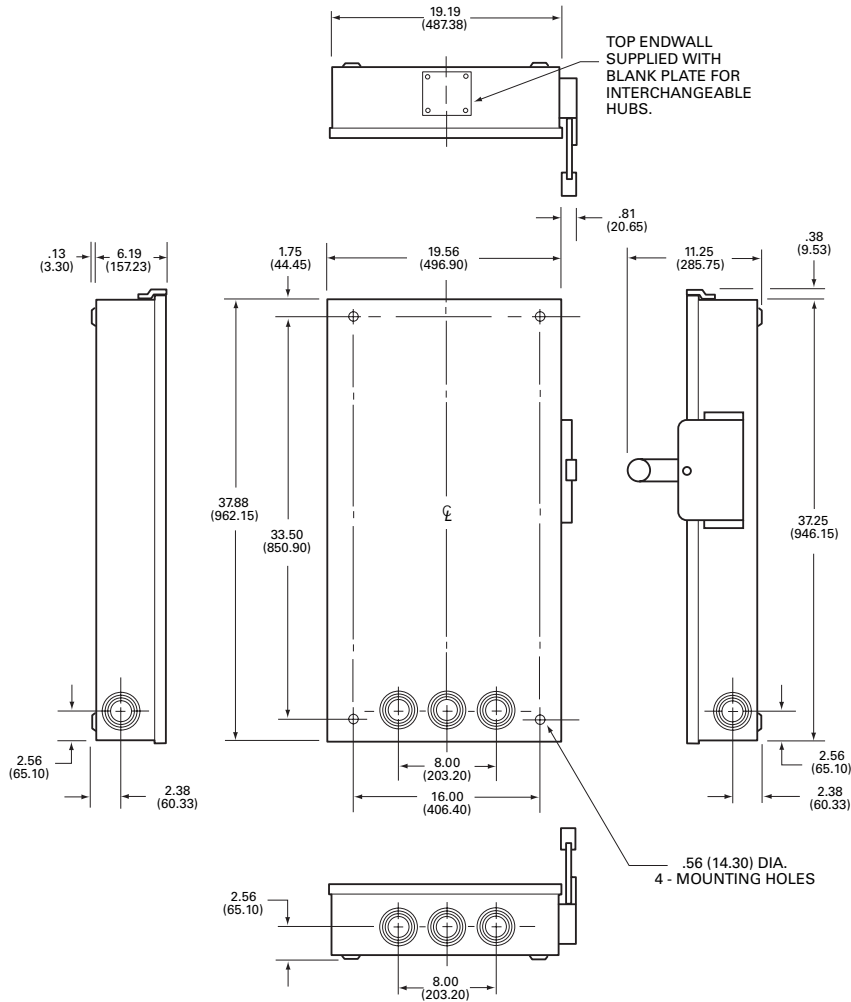
SIEMENS

Product Specification Sheet #H200.16 (page 2 of 2)

Compression Lugs

Wire Size	Burndy		Thomas-Betts	
	CU Wire	AL Wire	CU Wire	AL Wire
1/0	YA25L	YA25A1	54109	61130
2/0	YA26-L	—	54110	61136
3/0	—	YA27A1	—	61142
4/0	—	—	—	61148

Dimension Drawing



No knockouts in the enclosures.
 Dimensions shown in inches and millimeters ().
 Dimension shown accurate to $\pm \frac{1}{16}$ inch.

KNOCKOUT CODE	CONDUIT SIZE		
	A (Concentric)	1.50	2.00