

# Heavy Duty Safety Switch

## Type VBII, 800 and 1200 Amp, Type 12 (Industrial)<sup>1</sup>

### Standards and Ratings

- UL Listed under file #E4776
- Meets UL98 for switches and UL 50 for enclosures
- Meets NEMA Standard KS-1 for enclosed switches
- Meets NEC wire bending space requirements
- Rated 10,000 AIC as standard or 200,000 AIC with Class L and T fuses

- Suitable for use as service entrance equipment

### Features

- Quick-make and break switching action
- Visible blade design
- Highly visible ON/OFF indication
- Modular design allows quick and easy replacement of parts
- Defeatable dual cover interlock

### General Information

| Catalog Number | Amps | Volts | Description                 | Shipping Weight (lbs.) |
|----------------|------|-------|-----------------------------|------------------------|
| HNF367J        | 800  | 600   | 3 Pole, 3 Wire, Non-Fusible | 295                    |
| HNF368J        | 1200 | 600   | 3 Pole, 3 Wire, Non-Fusible | 310                    |

### Horsepower Ratings<sup>2 3</sup> - 600 Volts

| Catalog Number | 3 Phase, 480V AC |     | 3 Phase, 600V AC |     | 600V DC |
|----------------|------------------|-----|------------------|-----|---------|
|                | Std              | Max | Std              | Max |         |
| HNF367J        | —                | 500 | —                | 500 | —       |
| HNF368J        | —                | 500 | —                | 500 | —       |

### Accessories

| Catalog Number | Description   |
|----------------|---|
| HA165678       | One Normally Open and Closed Auxiliary Switches                       |
| HA265678       | Two Normally Open and Closed Auxiliary Switches                       |
| HA365678       | Low Voltage Auxiliary Switch  |
| HG678          | Equipment Ground Lug Kit (Factory installed)                          |
| HN678          | Neutral Kit   |
| 4              | Copper Lug Kit (1 lug per kit)  |
| 5              | Compression Lug Mounting Kit (2 kits/pole required allows (4) lugs/Ø) |

### Mechanical Lug Wire Range (75°C, Cu/Al)

| Description        | Wire Range              |
|--------------------|-------------------------|
| Line, Load (800A)  | (3) 1/0 AWG - 750 Kcmil |
| Line, Load (1200A) | (4) 1/0 AWG - 750 Kcmil |
| Neutral            | (4) 1/0 AWG - 750 Kcmil |
| Ground             | (4) #6 AWG - 250 Kcmil  |

<sup>1</sup> Also rated 3R/3S for outdoor use.

<sup>2</sup> Dual horsepower ratings: Std - applies when non-time delay fuses are installed.

Max - applies when time-delay fuses are installed.

<sup>3</sup> Also rated 250 HP on 3 phase, 240V AC systems.

<sup>4</sup> Catalog number HLC65678 factory installed only.

<sup>5</sup> Catalog number HCL65678 factory installed only.

## Product Specification Sheet HD800.6

Answers for industry.

**SIEMENS**

# Product Specification Sheet #HD800.6 (page 2 of 3)

## Replacement Parts

| Catalog Number        | Description                            |
|-----------------------|--|
| HNB67A <sup>1 2</sup> | 800A, Non-Fusible Replacement Base     |
| HM67                  | 800A, Replacement Mechanism            |
| HL67 <sup>3</sup>     | 800A, Replacement Lugs                 |
| HH65678               | 800A, Replacement Handle/Handle Guard  |
| HNB678 <sup>1 2</sup> | 1200A, Non-Fusible Replacement Base    |
| HM678                 | 1200A, Replacement Mechanism           |
| HH68                  | 1200A, Replacement Handle/Handle Guard |
| 4                     | Replacement Door                       |

## Compression Lugs (Factory Installed mounting kit HCL67T for top and HCL678 for bottom required)

| Wire Size | Burndy             |         | Thomas-Betts        |                | Ilsco               |                     |
|-----------|--------------------|---------|---------------------|----------------|---------------------|---------------------|
|           | CU Only            | CU/AL   | CU Only             | CU/AL          | CU Only             | CU/AL               |
| 2/0       | YA26-N             | YA26-A1 | 54160<br>54951BE    |                |                     | IACL-2/0<br>ACN-2/0 |
| 3/0       | YA27-L Box<br>YA27 | YA27A3  | 54165-TB<br>54965BE |                | CRB-3/0<br>CRB-3/0L | IACL-3/0<br>ACN-3/0 |
| 4/0       | YA28-L Box<br>YA28 | YA28A3  | 54170<br>54970BE    | 60150          | CRB-4/0<br>CRB-4/0L | IACL-4/0<br>ACN-4/0 |
| 250 Kcmil | YA29-L Box<br>YA29 | YA29A1  | 54113<br>54913BE    | 61156<br>60156 | CRA-250<br>CRA-250L | IACL-250<br>ACL-250 |
| 300 Kcmil | YA30-L<br>YA30     | YA30A1  | 54114<br>54914BE    | 61162<br>60162 | CRA-300<br>CRA-300L | IACL-300<br>ACL-300 |
| 350 Kcmil | YA31-L<br>YA31     | YA31A1  | 54915BE             | 61165<br>60165 | CRA-350<br>CRA-350L | IACL-350<br>ACL-350 |
| 400 Kcmil | YA32-N             |         | 54116<br>54916BE    |                |                     |                     |
| 500 Kcmil | YA34-L6<br>YA34-N  |         |                     | 61171          |                     | IACL-500            |

1 Replacement Base contains one pole.

2 Lugs are provided on Line and Load Replacement Base Assemblies.

3 One required per pole for either line or load.

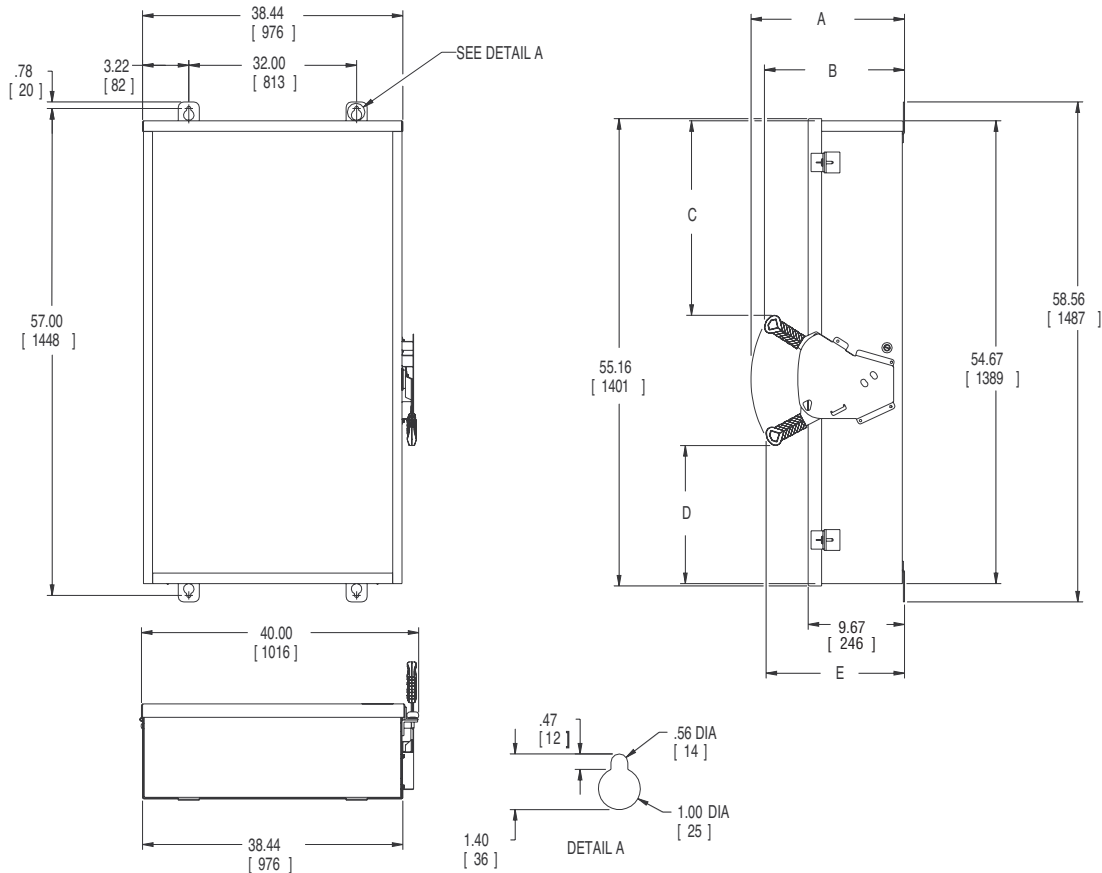
4 Place "DOORA" at the end of the switch catalog number.

# Product Specification Sheet #HD800.6 (page 3 of 3)

## Dimension Drawing

Dimensions Inches (mm)

| Cat. No. | A           | B           | C           | D           | E           |
|----------|-------------|-------------|-------------|-------------|-------------|
| HNF367J  | 14.68 (373) | 13.44 (341) | 24.02 (610) | 18.46 (469) | 13.25 (337) |
| HNF368J  | 17.80 (452) | 16.07 (408) | 21.90 (556) | 17.90 (455) | 16.06 (408) |



No knockouts in enclosures.  
 Dimensions shown in inches and millimeters ( ).  
 Dimension shown accurate to  $\pm \frac{1}{8}$  inch.

|           | LINE SIDE<br>WIRE BEND | LOAD SIDE<br>WIRE BEND |
|-----------|------------------------|------------------------|
| Non-fused | 22 (559)               | 22 (559)               |

Enclosure: Galvanized Steel  
 Box .093 Thick (12 Gauge)  
 Cover .123 Thick (10 Gauge)  
 Finish: ANSI #61 Grey Paint