


EasyTCC[®] QuickStart Tutorial

In this tutorial, you will be shown how to use several features in EasyTCC.

Creating a New TCC


To create a new TCC plot in one of two ways:

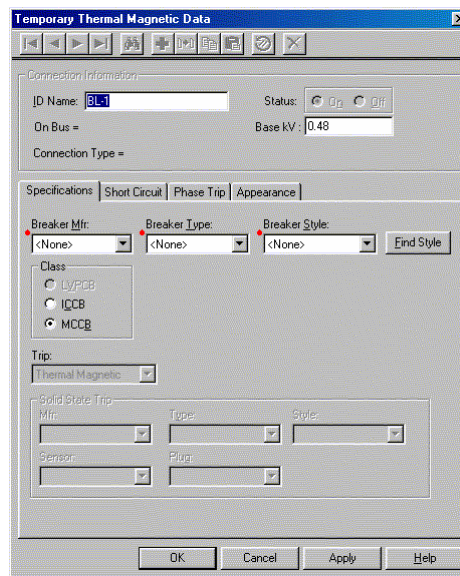
- Select from the menu bar: **File → New**.
- Click on the **New** button  on the toolbar.

A new blank plot area appears. You can insert any breaker curve in to this plot.

Inserting Thermal Magnetic Curves

To insert the TCC of a thermal magnetic breaker, you need to select the desired breaker and its settings through the **Thermal Magnetic Data** dialog. You can access this dialog using one of three methods given below:

- From the toolbar, select **Insert Thermal Magnetic Trip Curve**  button.
- From the menu bar, select **Insert → Thermal Magnetic Trip...**
- Right mouse click on the plot area and select **Insert Thermal Magnetic Trip...**




Thermal Magnetic Data Dialog

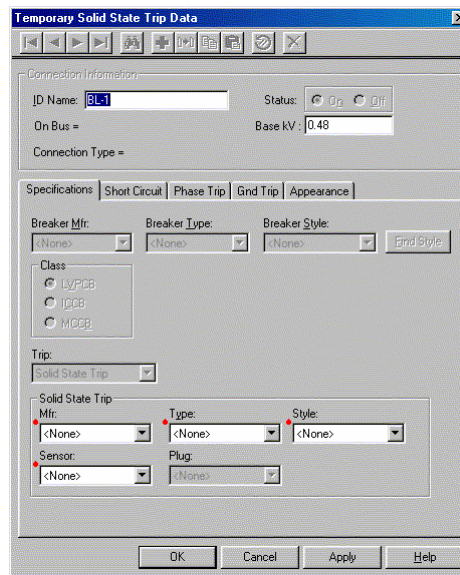
All fields with a *red dot* require data to be entered before the curve will plot. There are four tabs in this dialog, and each tab must have sufficient data before the curve will plot.

- Enter data into the required fields (with red dots) in the **Specifications** and **Phase Trip** tabs.
- Press **OK** to create the plot. A thermal magnetic curve will appear in the TCC plot area.

Inserting Solid State Trip Curves

To insert the TCC of a solid state trip breaker, you need to select the desired breaker and its settings through the **Temporary Solid State Trip Data** dialog. You can access this dialog by doing one of the following:

- From the toolbar, select **Insert Solid State Trip Curve**  button.
- From the menu bar, select **Insert → Solid State Trip...**
- Right mouse click on the plot area and select **Insert Solid State Trip...**



Solid State Trip Data Dialog

Again, all fields with a *red dot* require data. Notice that a **Ground Trip** tab is also included.

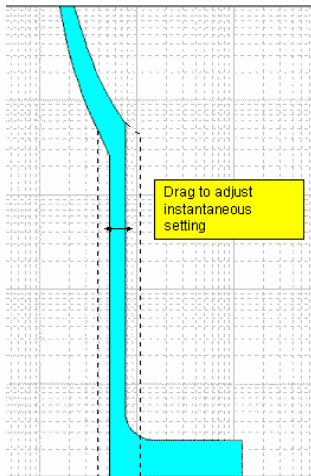
- Enter data into the required fields (with red dots) in the **Specifications** and **Phase Trip** tabs.
- Press **OK** to create the plot. A solid state curve will appear in the TCC plot area.

Adjusting Curve Settings

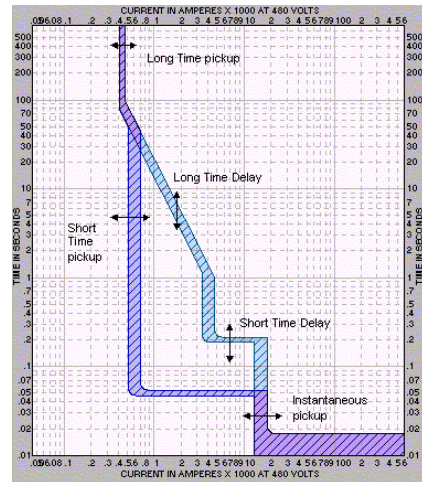
If the breaker trip settings are adjustable, you can modify the settings in two ways:

- Change selections in the dialog. To access the dialog, double-click on the curve.

- Drag the curve on the TCC plot using the left mouse button. The figures below demonstrate this.



Dragging Thermal Magnetic Curves




Dragging Solid State Curves

Inserting Short Circuit Ticks

Short circuit tick marks are entered via the **Short Circuit** tab of the curve dialog boxes (i.e. **Solid State Trip Data**, **Thermal Magnetic Data**). For each curve plotted, you can plot up to three tick marks – momentary, interrupting and 30-cycle.

Inserting Notes

You can insert notes within the TCC plot area and format them. To insert notes, do one of the following:

- Select from the toolbar **Insert Note**  button.
- From the menu bar, select **Insert** → **Note**.

Type your notes within the text area. To later change the text, double-click in the center of the note. To format the appearance of the note, double-click on the note border.

Customizing the TCC Area

You can double-click anywhere on the TCC to format. For example:

- Double-click on the Title Block change the text, colors, ..etc. of the Title Block.
- Double-click on the plot area to change colors and other formats of the TCC.

Saving a TCC

To save your TCC, click on the **Save** button on the toolbar or choose **File** → **Save** from the menu bar. The file is saved with the extension name *.tez.