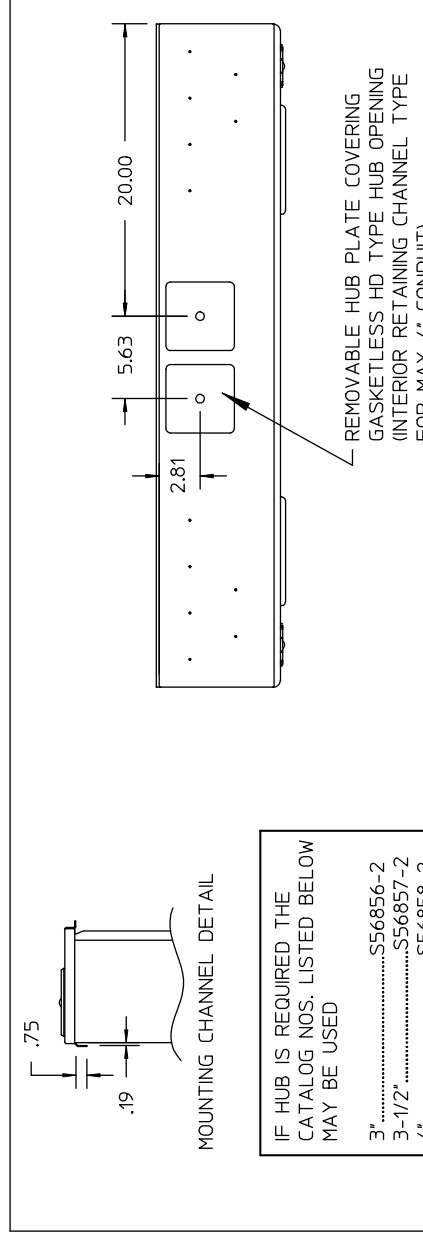
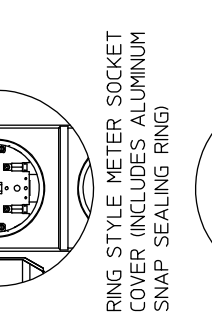
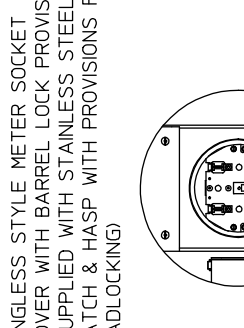
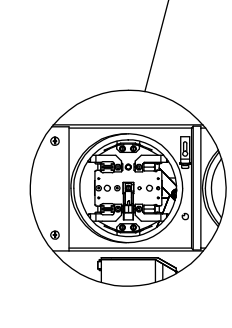
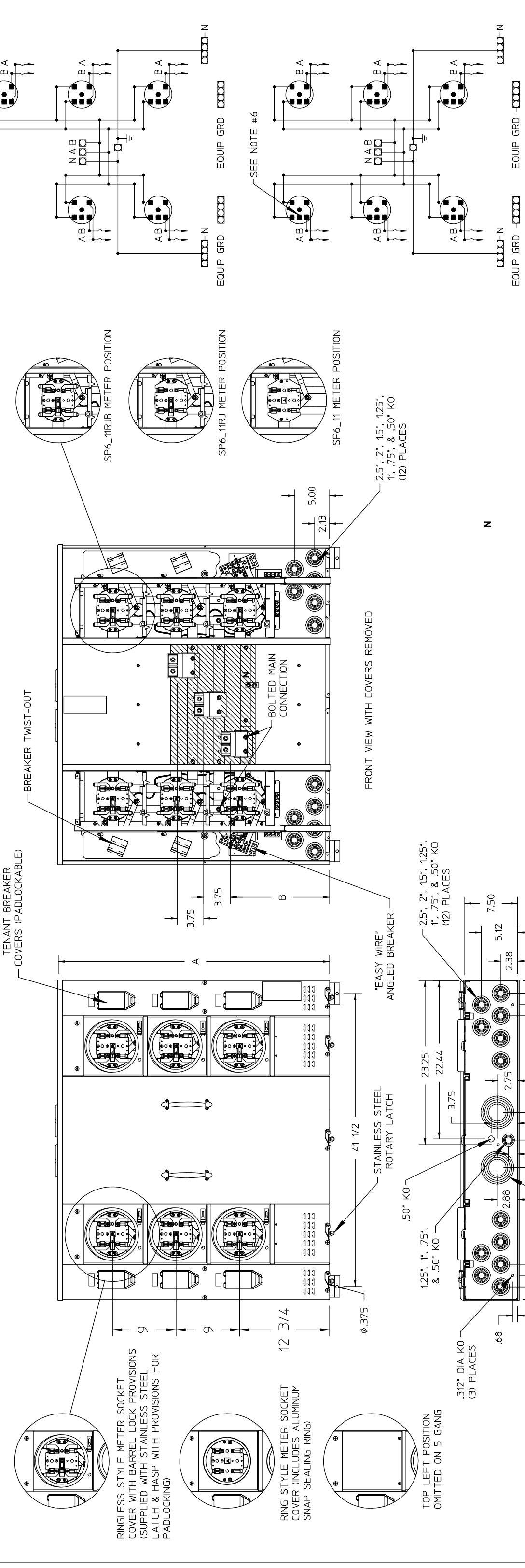


METER SOCKET COVER	NO. OF JAWS	FACTORY INSTALLED BYPASS	MAIN BUS RATING	BRANCH RATING	NO. OF POSITIONS	CATALOG NUMBER	DIMENSION "A"	DIMENSION "B"	SEMI-FLUSH MOUNTING KIT NO.	LINE LUG WIRE SIZES (AWG/KCMIL)		PHASE	BRANCH LUG WIRE SIZES (AWG-KCMIL)
										PHASE AND NEUTRAL	GROUNDING ELECTRODE		
RING-TYPE	4	NONE	600A	125A	5	SP6511	38.43"	14.13"		(2) #2 - 600 Cu-Al	#6 - 250	SEE CIRCUIT BREAKER WIRE SIZE	#12 - 2/0
RINGLESS	5	NONE	600A	125A	5	SP6511RJ	38.43"	14.13"					
RINGLESS	5	HORN	600A	125A	5	SP6511RJJB	38.43"	14.13"	SP6561FK				
RING-TYPE	4	NONE	600A	125A	6	SP6611	38.43"	14.13"					
RINGLESS	5	NONE	600A	125A	6	SP6611RJ	38.43"	14.13"					
RINGLESS	5	HORN	600A	125A	6	SP6611RJJB	38.43"	14.13"					



IF HUB IS REQUIRED, THE CATALOG NOS. LISTED BELOW MAY BE USED

3".....S56856-2
 3-1/2".....S56857-2
 4".....S56858-2
 Cover Plate.....S56933



UNLESS OTHERWISE SPECIFIED DIMENSIONS ARE IN INCHES

TOLERANCES:
 .XX
 .XXX

HOLE DIAMETER
 ANGULAR
 UNDIMENSIONED 90° ANGLES

DWN BDD DATE 3-7-2003
 CHK AGP DATE 3-7-2003
 APVD DATE

SCALE

DO NOT SCALE DRAWING

SHEET 1 OF 1

ISSUE RELEASE NO. DWG NO. SP6X11

SIZE B

REV A

-CONFIDENTIAL-PROPERTY OF
 Siemens Energy & Automation, Inc.
 Residential Products Division

UNI-PAK/ALL-IN-ONE METERING EQUIPMENT
 NEMA TYPE 3R ENCLOSURE
 600A MAXIMUM TENANT CIRCUIT BREAKERS

NOTES:
 1. FINISH: ANSI 61 GRAY BAKED POWDER COAT PAINT OVER G-90 GALVANIZED, PHOSPHATIZED STEEL
 2. UL LISTED - FILE E10703
 3. SUITABLE ONLY FOR USE AS SERVICE EQUIPMENT
 4. SHORT CIRCUIT CURRENT RATING OF METER CENTER IS EQUAL TO THE RATING OF THE LOWEST INSTALLED TENANT SERVICE DISCONNECT.
 5. MAIN CONNECTION POINTS RIGIDLY BOLTED WITH BOLT THAT HAS A MINIMUM MAJOR DIAMETER EQUAL TO OR GREATER THAN BUS THICKNESS WITH A CONICAL/SRING WASHER AND HEX NUT.
 6. 5TH JAW IS FACTORY INSTALLED ON RINGLESS ENCLOSURES