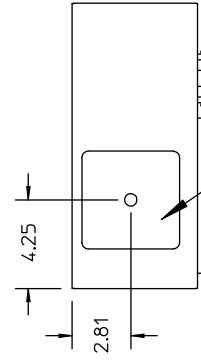


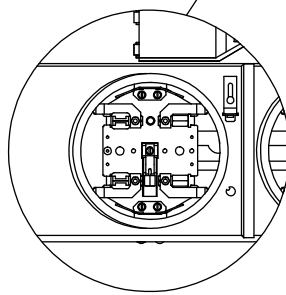
METER SOCKET COVER		NO. OF JAWS	FACTORY INSTALLED BYPASS	MAIN BUS RATING	BRANCH RATING	CATALOG NUMBER	DIMENSION "A"	DIMENSION "B"	SEMI-FLUSH MOUNTING KIT NO.	EUSERC STUD KIT	LINE LUG WIRE SIZES (AWG/KCMIL)		PHASE	NEUTRAL & SERVICE GROUND	EQUIPMENT GROUNDING
RING-TYPE	RINGLESS										PHASE AND NEUTRAL	GROUNDING ELECTRODE			
120/240VAC, 1Ø 3 WIRE OR 208Y/240VAC, 1Ø 3 WIRE (5TH JAW REQUIRED)		4	NONE	200A	125A	SP2211	37.50"	11.25"	SP221FK	NA	#4 - 300 Cu-Al	#14 - 2 Cu-Al	SEE CIRCUIT BREAKER WIRE SIZE	#12 - 2/0	#12 - 2/0
		5	NONE	200A	125A	SP221RJ	37.50"	11.25"							
		5	HORN	200A	125A	SP221RJ/B	37.50"	11.25"							

IF HUB IS REQUIRED THE CATALOG NOS. LISTED BELOW MAY BE USED

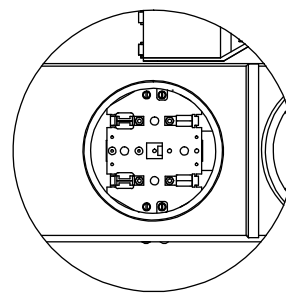
3".....S56856-2
 3-1/2".....S56857-2
 4".....S56858-2
 Cover Plate.....S56933



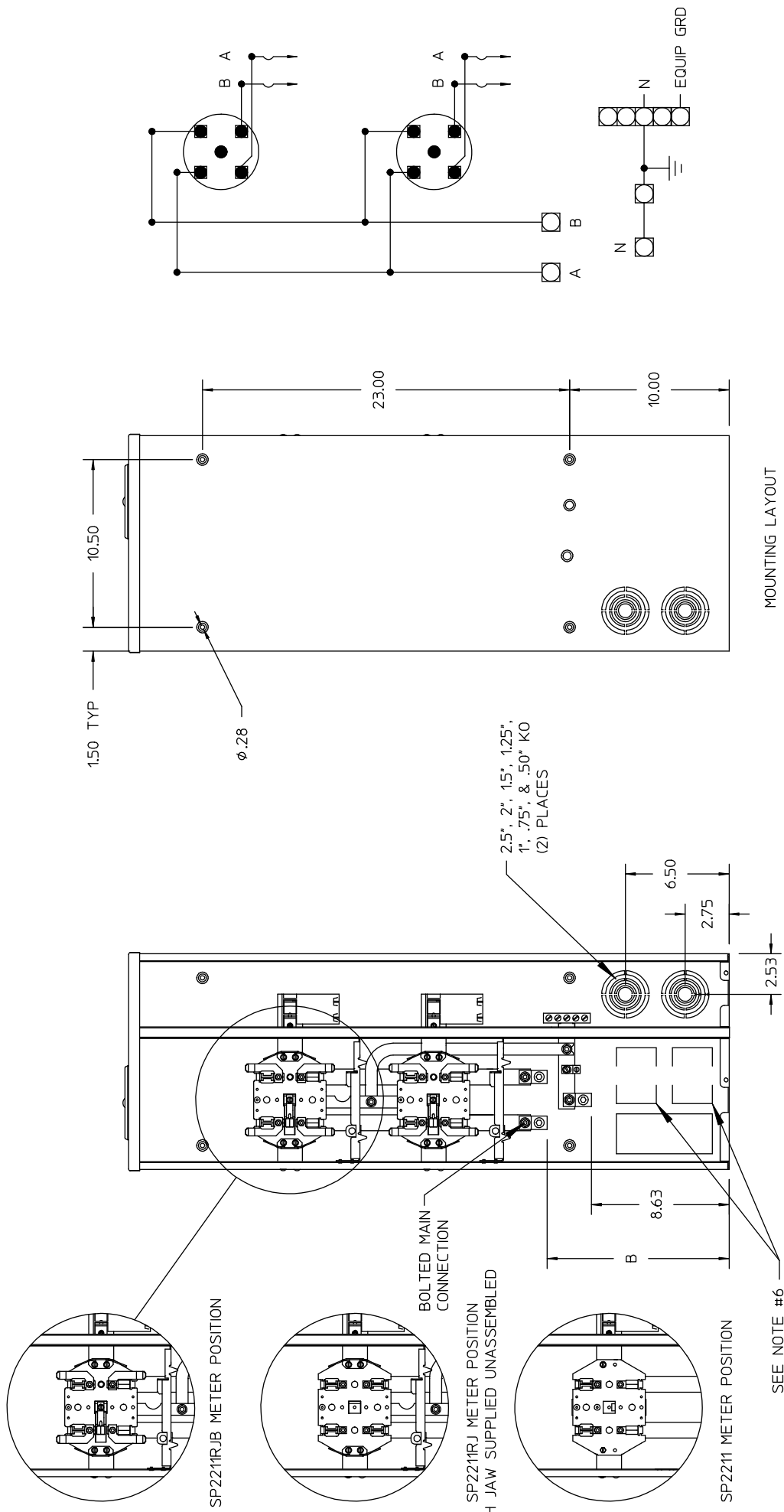
REMOVABLE HUB PLATE COVERING GASKETLESS HD. TYPE HUB OPENING (INTERIOR RETAINING CHANNEL TYPE FOR MAX 4" CONDUIT)



RINGLESS STYLE METER SOCKET COVER WITH BARREL LOCK PROVISIONS (SUPPLIED WITH STAINLESS STEEL LATCH & HASP WITH PROVISIONS FOR PADLOCKING)



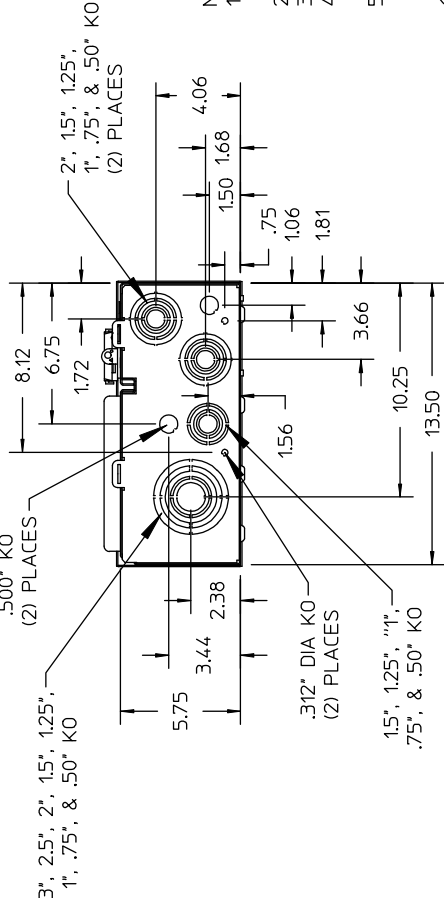
RING STYLE METER SOCKET COVER (INCLUDES ALUMINUM SNAP SEALING RING)



MOUNTING LAYOUT

FRONT VIEW WITH COVERS REMOVED

SEE NOTE #6



UNLESS OTHERWISE SPECIFIED DIMENSIONS ARE IN INCHES

- TOLERANCES:
- XX
 - XXX
- HOLE DIAMETER
ANGULAR
UNDIMENSIONED 90° ANGLES

- NOTES:
1. FINISH: ANSI 61 GRAY BAKED POWDER COAT PAINT OVER G-90 GALVANIZED, PHOSPHATIZED STEEL
 2. UL LISTED - FILE E10703
 3. SUITABLE ONLY FOR USE AS SERVICE EQUIPMENT
 4. SHORT CIRCUIT CURRENT RATING OF METER CENTER IS EQUAL TO THE RATING OF THE LOWEST INSTALLED TENANT SERVICE DISCONNECT.
 5. MAIN CONNECTION POINTS RIGIDLY BOLTED WITH BOLT THAT HAS A MINIMUM MAJOR DIAMETER EQUAL TO OR GREATER THAN BUS THICKNESS WITH A CONICAL/SRING WASHER AND HEX NUT.
 6. ON "RJ" SUFFIX ENCLOSURES IDENTIFICATION LABEL AND INSTALLATION LABEL FOR INSTALLING 5TH TERMINAL ATTACHED AT THESE LOCATIONS.

-CONFIDENTIAL-PROPERTY OF
Siemens Energy & Automation, Inc.
 Residential Products Division

UNI-PAK/ALL-IN-ONE METERING EQUIPMENT
 NEMA TYPE 3R ENCLOSURE
 200A MAXIMUM TENANT CIRCUIT BREAKERS

UNLESS OTHERWISE SPECIFIED DIMENSIONS ARE IN INCHES	DATE 3-7-2003	SIZE B	ISSUE RELEASE NO.	DWG NO. SP2211	REV B
TOLERANCES: XX, XXX	DATE	SCALE	DO NOT SCALE DRAWING	SHEET 1 OF 1	
HOLE DIAMETER, ANGULAR, UNDIMENSIONED 90° ANGLES	DATE				
DWN BDD, CHK APVD	DATE				