

# SMB6R – Shallow reversible mounting bracket for BQ circuit breakers

For Breaker Types BQ, BQH, HBQ, BQXD 125A

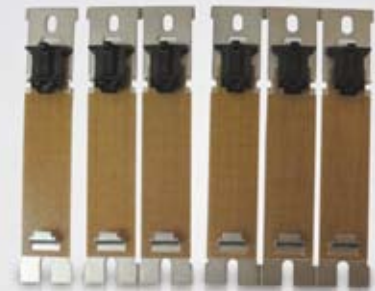
The SMB6R Shallow Reversible Mounting Bracket is used for OEM designed equipment to properly mount Siemens 1, 2 or 3 pole molded case circuit breaker types BQ, BQH, HBQ and BQXD on a user supplied mounting surface.

## Specifications:

- UL Recognized component
- Replaces SMB6 Shallow Mounting Bracket
- To be used with Siemens BQ Frame compact molded case circuit breakers rated from 10 to 65kA @ 120, 120/240, 240Vac
- Easy to snap circuit breaker into place application
- Supplied as a 6 piece break apart strip

## Each strip can be broken into:

- 6 -- 1 Pole units
- 3 -- 2 Pole units
- 2 -- 3 Pole units

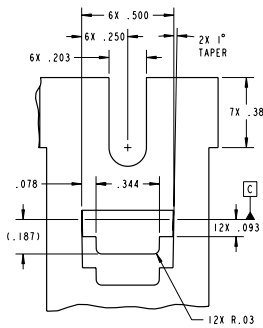


SMB6R – Shallow reversible mounting bracket

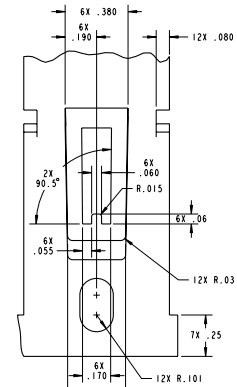
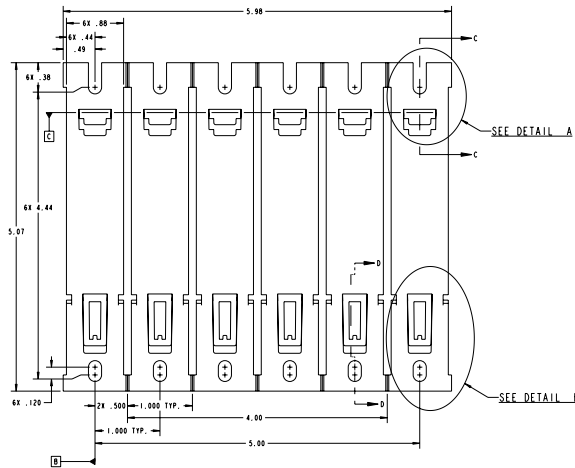
Answers for industry.

**SIEMENS**

# SMB6R – Outline drawings



DETAIL A  
SCALE 3:1  
TYPICAL (6) PLACES



DETAIL B  
SCALE 3:1  
TYPICAL (6) PLACES

Siemens Industry, Inc.  
Industry Sector  
3333 Old Milton Parkway  
Alpharetta, GA 30005  
1-800-964-4114

Info.us@siemens.com

www.usa.siemens.com/XXXXXXXXXX

Subject to change without prior notice  
Order No.: XXXX-XXXXX-XXXX

All rights reserved  
Printed in USA  
© 2009 Siemens Energy & Automation, Inc.

The information provided in this brochure contains merely general descriptions or characteristics of performance which in case of actual use do not always apply as described or which may change as a result of further development of the products. An obligation to provide the respective characteristics shall only exist if expressly agreed in the terms of contract.

All product designations may be trademarks or product names of Siemens AG or supplier companies whose use by third parties for their own purposes could violate the rights of the owners.