

CATALOG NUMBER

# EC2GB12

# electricCenter

ACCESSORIES

## Ground Bar Kit

12 position, #14-4 AWG

Type EC2GB



## GROUND BAR INSTALLATION INSTRUCTIONS



### ⚠ DANGER

**Hazardous Voltage.**  
Will cause death, serious injury  
or substantial property damage.

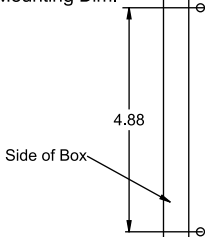
Turn off power supplying this  
equipment before working inside.



### SAFETY INSTRUCTIONS

**Note:** This instruction outlines the recommended installation procedure. For installation by a qualified person, as defined by all local electrical codes and/or the National Electrical Code®.

Ground Bar  
Mounting Dim.



1. Turn off and lock off the power supplying the load center before working inside.
2. Mount grounding bar to back of box where holes are provided using the self-tapping screw(s) enclosed. Torque screws to 24-30 lb-in. The proper holes are located in the side wiring gutter as shown in the diagram.
3. Place enclosed "Equip. Grd." marker near the ground bar.

See wiring diagram on device for wire sizes and torques.

Siemens Industry, Inc. Norcross, Georgia U.S.A.

481000310101 Rev.XA

® The National Electrical Code is a registered trademark of the National Fire Protection Association.  
© 2011 Copyright Siemens Industry, Inc. Assembled in Mexico