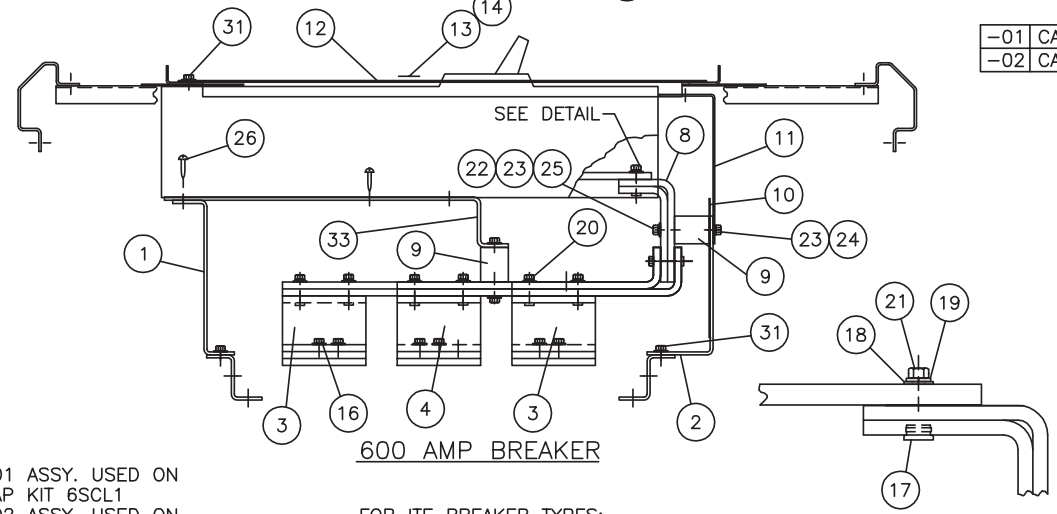


-01 CAT# 6SCL1  
 -02 CAT# SSCLD



600 AMP BREAKER  
 FOR ITE BREAKER TYPES:  
 SCLD6

PC. -01 ASSY. USED ON STRAP KIT 6SCL1  
 PC. -02 ASSY. USED ON STRAP KIT SSCLD

| -02 | -01 | ITEM | PC. NO.      | DESCRIPTION                  |
|-----|-----|------|--------------|------------------------------|
| 1   | 1   | 1    | 16-6114-01   | MOUNTING BRACKET             |
| 1   | 1   | 2    | 16-6120-02   | SUPPORT BRACKET              |
| 2   | 2   | 3    | 17-6768-02   | ØAC JITNEY                   |
| 1   | 1   | 4    | 17-6769-02   | ØB JITNEY                    |
| 1   | 1   | 5    | 12-6776-06   | ØAC LONG CONNECTOR           |
| 1   | 1   | 6    | 12-6776-05   | ØB CONNECTOR                 |
| 1   | 1   | 7    | 12-6776-04   | ØAC SHORT CONNECTOR          |
| 3   | 3   | 8    | 17-6770-02   | PAD CONNECTOR                |
| 4   | 4   | 9    | 11-1800-02   | 1-1/4" INSULATOR             |
| 1   | 1   | 10   | 11-7721-01   | BARRIER                      |
| 1   | 1   | 11   | 11-6415-02   | BARRIER                      |
| 1   | 1   | 12   | 12-6487-01   | COVER PLATE                  |
| 1   | 1   | 13   | 11-7505-01   | CIRCUIT I.D. CARD            |
| 1   | 1   | 14   | 11-7506-01   | CARD HOLDER                  |
|     |     | 15   |              |                              |
| 2   | 2   | 16   | 11-B-2022-05 | STRAP-BUS HARDWARE KIT       |
| 12  | 12  | 17   | 11-1620-04   | 5/12-18 INSERT               |
| 12  | 12  | 18   | 11-1615-06   | 5/16" FLAT WASHER            |
| 12  | 12  | 19   | 11-1618-04   | 5/16" LOCK WASHER            |
| 6   | 6   | 20   | 11-1566-05   | 5/16-18 X 1" HHMS            |
| 6   | 6   | 21   | 11-1566-07   | 5/16-16 X 1-1/4" HHMS        |
| 8   | 8   | 22   | 11-1615-04   | 1/4" FLAT WASHER             |
| 8   | 8   | 23   | 11-1618-03   | 1/4" LOCK WASHER             |
| 4   | 4   | 24   | 11-1546-02   | 1/4-20 X 1/2" HHMS           |
| 4   | 4   | 25   | 11-1546-05   | 1/4-20 X 7/8" HHMS           |
| 4   | 4   | 26   | 11-1542-14   | 1/4-20 X 2-3/4" SRHMS        |
| -   | 1   | 27   | 12-B-2105-04 | NEUTRAL LUG ASSEMBLY         |
| 1   | -   | 28   | 12-B-2105-06 | NEUTRAL LUG ASSEMBLY         |
| -   | -   | 29   | 11-1580-02   | 3/8-16 X 1" RHSNB            |
| -   | -   | 30   | 11-1622-01   | 3/8-16 BELLEVILLE WASHER NUT |
| 6   | 6   | 31   | 11-1553-02   | 1/4-20 X 3/8" SHWHSW         |
| 1   | 1   | 32   | 12-5531-11   | FILLER PLATE ASSEMBLY        |
| 1   | 1   | 33   | 16-6115-01   | AUXILIARY MOUNTING BRACKET   |
| 1   | -   | 34   | 31-1230-01   | INSTRUCTION SHEET            |
| 1   | 1   | 35   | 15-A-1027-01 | CARTON LABEL                 |
| 1   | 1   | 36   | 48001057     | CARTON                       |
| -   | 1   | 37   | 11-5570-02   | SERIES 5 CONVERSION KIT      |
| -   | 1   | 38   | 31-1195-01   | INSTRUCTION SHEET            |
|     |     | 39   |              |                              |
|     |     | 40   |              |                              |

TORQUE VALUES:  
 (16) 72 IN/LBS.  
 (29) 20 FT/LBS.  
 (20)(21) 12 FT/LBS.



**⚠ DANGER**  
 Hazardous voltage.  
 Will cause death or serious injury.  
 Keep out.  
 Qualified personnel only.  
 Disconnect and lock off all power before working on this equipment.

|   |         |          |
|---|---------|----------|
| 8 | 1C-831B | 7-31-06  |
| 7 | 1C-831A | 04-12-04 |
| 6 | 1B-908  | 5-8-95   |
| 5 | 1B-359  | 11-11-92 |
| 4 | 1A-939  | 7-22-91  |
| 3 | 1A-280B | 1-31-91  |
| 2 | 1A-280  | 11-30-90 |
| 1 | 1A-077  | 6-08-89  |
| 0 | 1A-066  | 2-16-89  |

Unless otherwise specified dimensions are in inches  
 Tolerances are non-cumulative and are as follows unless specified otherwise.  
 .XX ± .030  
 .XXX ± .015  
 Angular ± 2'  
 Do not scale drawing  
 Dwn MGR Date 8-28-91  
 Chk JRM Date 9-5-91  
 Apvd SH Date 9-13-91

Confidential - Property of  
**Siemens Industry, Inc.**  
 Building Technologies Division

**SCLD FRAME MOUNT**  
 SERIES 6 - BRANCH

Dwg No. 12-5772 Rev. 8  
 Scale NONE Sheet 1 of 1

FOR USE WITH SCLD6 FRAME BREAKERS MOUNTED IN SPP/FPP/S5/F2/P5 PANELBOARDS (DEEP BOX).