

400 AMP BREAKER

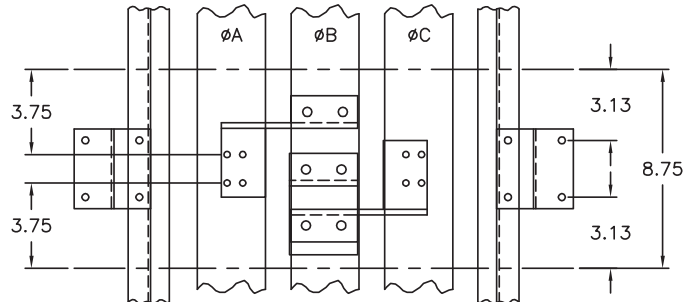
PC. -01 ASSEMBLY USED ON STRAP KIT 6JJ62
 PC. -02 ASSEMBLY USED ON STRAP KIT SJ2D

FOR ITE BREAKER TYPES:
 JD2, JJ6, JL6, HJ6, JXD2
 JXD2, JXD6, JD6, HJD6, HHJD6

TORQUE VALUES

- ④ - 12 FT./LBS.
- ⑩ - 72 IN./LBS.

| -02 | -01 | ITEM | PC. NO. | DESCRIPTION |
|-----|-----|------|--------------|------------------------------|
| 2 | 2 | 1 | 11-6398-01 | MOUNTING BRACKET |
| 2 | 2 | 2 | 16-6974-01 | ØAC BRANCH BUS |
| 1 | 1 | 3 | 16-6949-02 | ØB BRANCH BUS |
| 6 | 6 | 4 | 11-1566-07 | 5/16-18 X 1-1/4" HHMS |
| 6 | 6 | 5 | 11-1618-04 | 5/16" LOCK WASHER |
| 6 | 6 | 6 | 11-1615-06 | 5/16" FLAT WASHER |
| 6 | 6 | 7 | 11-1620-04 | 5/16-18 INSERT |
| 1 | 1 | 8 | 12-6139-01 | FRONT PLATE |
| 6 | 6 | 9 | 11-1553-02 | 1/4-20 X 3/8" SHWHSW |
| 2 | 2 | 10 | 11-B-2022-05 | STRAP-BUS HARDWARE KIT |
| 4 | 4 | 11 | 11-1542-14 | 1/4-20 X 2-3/4" SRHMS |
| 1 | 1 | 12 | 12-5531-11 | FILLER PLATE ASSEMBLY |
| 1 | - | 13 | 31-1223-01 | INSTRUCTION SHEET |
| 1 | 1 | 14 | 15-A-1027-01 | CARTON LABEL |
| 2 | 2 | 15 | 11-7505-01 | CIRCUIT I.D. CARD |
| 2 | 2 | 16 | 11-7506-01 | CARD HOLDER |
| 4 | - | 17 | 11-1546-03 | 1/4-20 X 5/8" HHMS |
| 4 | - | 18 | 11-1618-03 | 1/4" LOCK WASHER |
| 4 | - | 19 | 11-1615-04 | 1/4" FLAT WASHER |
| - | - | 20 | 11-1580-02 | 3/8-16 X 1" RHSNB |
| - | - | 21 | 11-1622-01 | 3/8-16 BELLEVILLE WASHER NUT |
| 1 | 1 | 22 | 48001057 | CARTON |
| - | 1 | 23 | 11-5570-02 | SERIES 5 CONVERSION KIT |
| - | 1 | 24 | 31-1169-01 | INSTRUCTION SHEET |
| - | - | 25 | | |
| - | 1 | 26 | 12-B-2105-04 | NEUTRAL LUG ASSEMBLY |
| 1 | - | 27 | 12-B-2105-06 | NEUTRAL LUG ASSEMBLY |



⚠ DANGER

Hazardous voltage.
Will cause death or serious injury.

Keep out.
Qualified personnel only.
Disconnect and lock off all power before working on this equipment.

| Rev | C.N. | Date | Do not scale drawing |
|-----|---------|----------|----------------------|
| 11 | 1C-831B | 7-31-06 | .XX ± .030 |
| 10 | 1C-831A | 04-12-04 | .XXX ± .015 |
| 9 | 1B-908 | 5-8-95 | Angular ± 2° |
| 8 | 1B-359 | 11-11-92 | |
| 7 | 1B-190 | 2-11-92 | |
| 6 | 1A-939 | 7-22-91 | |
| 5 | 1A-280B | 1-31-91 | |
| 4 | 1A-280 | 11-30-90 | |
| 3 | 1A-066 | 2-16-89 | |
| 2 | 8A-093 | 7-15-88 | |
| 1 | 945 | | |
| 0 | 864 | 4-12-84 | |

Confidential - Property of
Siemens Industry, Inc.
 Building Technologies Division

JD FRAME TWIN MOUNTING
 SERIES 6 BRANCH

| | |
|-----------------|--------------|
| Dwg No. 12-5721 | Rev. 11 |
| Scale NONE | Sheet 1 of 1 |

FOR USE WITH JXD2, JXD6, JD6 AND HJD6 FRAME BREAKERS MOUNTED IN SPP/FPP/S5/F2/P5 PANELBOARDS (DEEP BOX).