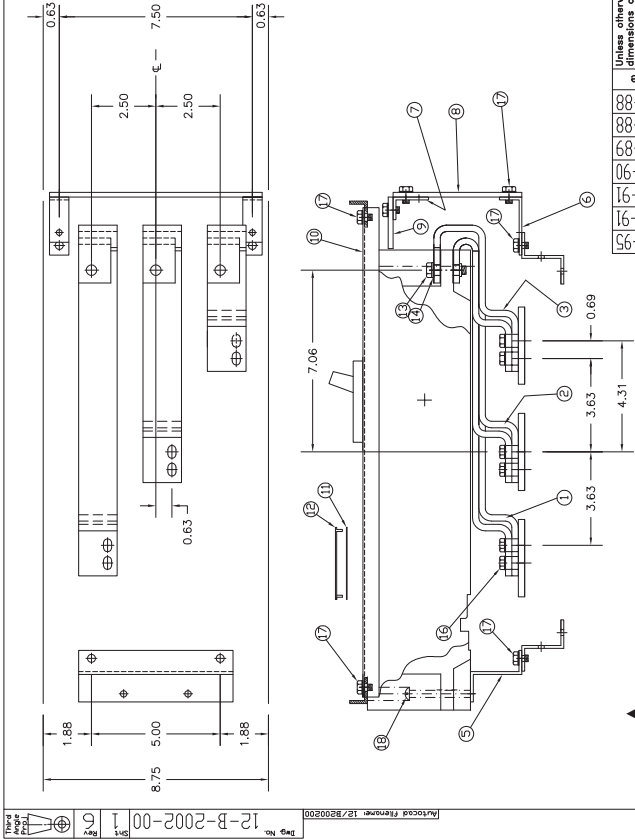




TORQUE VALUES:
 ⓐ 72 in.-lbs.
 ⓑ 12 ft.-lbs.

NOTE: USE (1) 500 OR (2) 250 KCMIL
 TERMINAL LUGS ON LOAD SIDE OF
 BREAKER DUE TO WIRE BENDING
 SPACE REQUIREMENTS.



FOR I.T.E. TYPE BREAKERS: CLJ, CJD6 CAT. NO. SCJ

Date		14-045	8-25-88
Rev	1	14-042	11-03-88
Rev	2	14-067	2-28-89
Rev	3	14-280	11-30-90
Rev	4	14-870	3-22-91
Rev	5	14-184	10-23-91
Rev	6	14-908	04-13-95

Unless otherwise specified dimensions are in inches and are as follows unless specified otherwise:
 XXX ±.015
 XXX ±.010
 XXX ±.012
 Angular ±.2°
 Do not scale drawing
 Dwg No. 12-B-2002-00
 Date 3-10-88
 Date 3-11-88
 Date 9-21-88
 Scale NONE
 Chk JC
 Jc SH
 Revd SH

Siemens Industry, Inc.
 Building Technologies Division
 CJD MOUNTING
 BRANCH BUS
 12-B-2002-00
 Sheet 1 of 1

FOR USE WITH CJD6 FRAME BREAKERS MOUNTED
 IN SPP/FPP/S4/F1/P4 PANELBOARDS (SHALLOW BOX).

Apvd	ITEM	DESCRIPTION	PC. NO.	QTY.
PM 11-30-90	1	A PHASE BRANCH BUS	12-B-4008-03	1
	2	B PHASE BRANCH BUS	12-B-4008-04	1
	3	C PHASE BRANCH BUS	12-B-4008-05	1
	4			
	5	MOUNTING BRACKET	15-B-3022-01	1
	6	BARRIER CLIP	11-B-3007-02	2
	7	BARRIER CLIP	11-B-3007-01	2
	8	LOAD BARRIER	11-B-4501-01	1
	9	LOAD BARRIER	11-B-4501-03	1
	10	COVER PLATE	12-6194-02	1
	11	CIRCUIT I. D. CARD	11-7505-01	1
	12	CARD HOLDER	11-7506-01	1
	13	5/16-18 X 1 1/4 HHMS	11-1566-07	3
	14	5/16 LOCK WASHER	11-1618-04	3
	15			
	16	STRAP-BUS HARDWARE KIT	11-B-2023-05	1
	17	1/4-20 X 3/8 SHWHSW	11-1553-02	14
	18	1/4-20 X 2 1/2 SRHMS	11-1542-13	2
	19			
	20			
	21			
	22			
	23			
	24	NEUTRAL LUG ASSEMBLY	12-B-2105-06	1
	25			
	26			
	27			
	28	INSTRUCTION SHEET	31-1208-01	1
	29	CARTON LABEL	15-A-1027-01	1
	30	CARTON	48001057 ▲	1
	31			
	32			
	33			
	34			
	35			
Revisions 0: 1A-280 4:1C-831B 7-31-06				
1: 1A-870 3-22-91				
2: 1B-908 5-8-95				
3: 1C-831A 4-12-04				
Chk SH 11-30-90	FOR I. T. E. TYPE BREAKERS: CLJ, CJD6			
By MC 11-20-90	MERCHANDISE KIT NO. SCJ			
Confidential - property of Siemens Industry, Inc. Building Technologies Division		CJD BREAKER MOUNTING S4, BRANCH BUS COPPER	12-B-2002-03 Dwg No.	4 Rev.
Title			Sht. 1 Of 1	