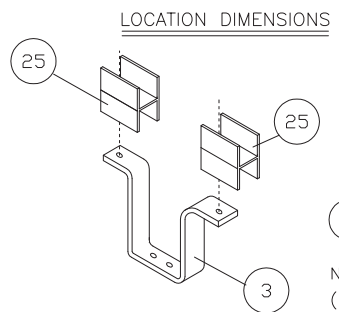


⚠ DANGER
 Hazardous voltage. Will cause death or serious injury.
 Keep out. Qualified personnel only. Disconnect and lock off all power before working on this equipment.



TORQUE VALUES

- 12 50 in.-lbs. AL.
- 10 72 in.-lbs. CU.

NOTES

- FOR PROVISIONS - FILL BLANK SPACE WITH ITEMS #15 & 25
- F6-FRAME BRANCH BREAKER 70-250 AMPERE DOUBLE MOUNTING

4	1C-267A	3-8-00
3	1A-280	11-30-90
2	1A042	11-3-88

1		1A045	10-5-88	Unless otherwise specified dimensions are in inches Tolerances are non-cumulative and are as follows unless specified otherwise. .XX ± .030 .XXX ± .015 Angular ± 2° Do not scale drawing	Confidential - Property of Siemens Industry, Inc. Building Technologies Division		
0		1A036	8-25-88		F6 FRAME MOUNTING SPP (SHALLOW) BRANCH BUS		
Rev	C.N.	Date	Dwg. No. 15-B-2014-00		Rev.	4	
Dwn	DB	Date 3-8-00	Scale NONE		Sheet	1 of 1	
Chk	RHR	Date 3-8-00					
Apvd	RHR	Date 3-8-00					

ITEM	DESCRIPTION	PC. NO.	QTY.
1	F6 PH. A&C FRONT BRANCH BUS	12-B-4002-02	2
2	F6 PH. A&C REAR BRANCH BUS	12-B-4003-02	2
3	F6 PH. B BRANCH BUS	12-B-4004-02	1
4			
5	F6 MOUNTING BRACKET	15-B-3018-01	2
6	5" F6 COVER PLATE	12-6028-01	1
7	CIRCUIT ID CARD	11-7505-01	2
8	CARD HOLDER	11-7506-01	2
9	14-20 X 3/8 SHWHSW	11-1553-02	6
10	STRAP-BUS HARDWARE KIT	11-B-2023-05	1
11			
12	1/4-20 X 1 SHWHSW	11-1553-09	6
13	1/4-20 X 4 SRHMS	11-1542-19	4
14			
15	BLANK FILLER	12-5531-10	2
16	10-24 X 5/8 RHSNB	11-1630-02	4
17	10-24 LOCK NUT	11-1821-02	4
18	NEUTRAL LUG ASSEMBLY	12-B-2105-05	2
19			
20			
21			
22			
23			
24			
25	PH. B BARRIER (FOR PROVISIONS)	11-7548-02	4
26			
27			
28	INSTRUCTION SHEET	31-1202-01	1
29	CARTON LABEL	15-A-1027-01	1
30	CARTON	48001056	1
31			
32			
33			
34			
35			

Revisions	4: 1C-267A 1-18-00	5: 1C-831A 04-12-04	6: 1C-831B 07-25-06	7: 1E-143A 02-11-09
1: 1A-280-B 1-31-91	2: 1A-232 01-11-91	3: 1B-908 5-8-95		

Chk	SH	11-30-90	FOR I-T-E TYPE BREAKERS: FJ6, F6, HF6, FXD6, FD6, HFD6 70-250 AMPERES FOR (SHALLOW) PANELBOARDS MERCHANDISE KIT NO. SF6
By	MC	11-20-90	

Confidential - property of Siemens Industry, Inc. Building Technologies Division	F6-FRAME MOUNTING S4, COPPER BRANCH BUS	15-B-2014-03 Dwg. No.	7
Title	Sht. 1	Of 1	Rev.

FOR USE WITH FXD6, FD6 AND HFD6 FRAME BREAKERS MOUNTED IN SPP/FPP/S4/F1/P4 PANELBOARDS (SHALLOW DEPTH).