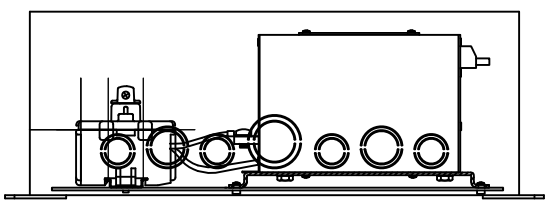
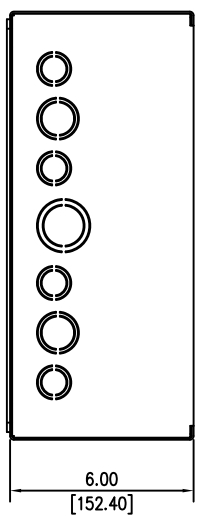
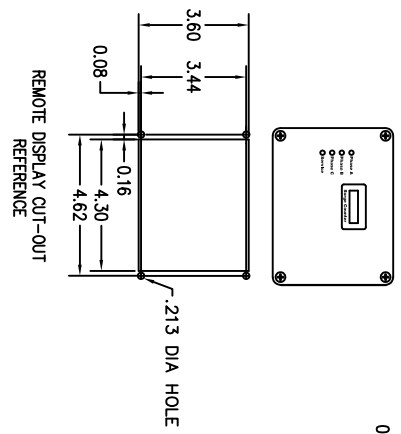
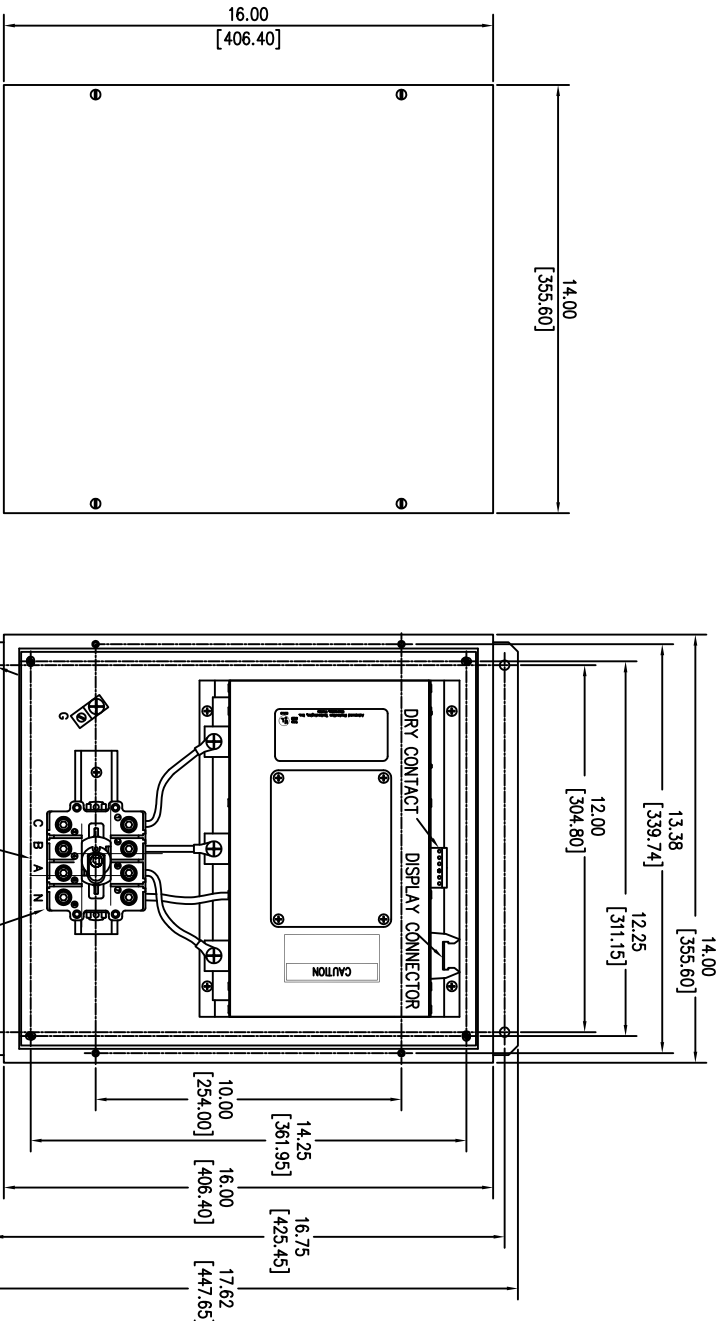


SURGE PROTECTIVE DEVICE (SPD)
WEIGHTS & DIMENSIONS
NEMA RATING: 1



ENCLOSURE SPECS:
DESC: ENCLOSURE, SCREWCOVER PULLBOX
DIM: 16" H x 14" W x 6" D
MAT: CARBON STEEL, 16 GAUGE
FINISH: POWDERCOAT ANSI 61 GRAY
NEMA RATING: 1
DEVICE WEIGHT: 22.25LBS. (10.09KG.)

Rev	C.N.	Date
△	1	
□	1	

Denotes latest changes.
Critical dimension.

DESIGNED BY	H. DRIGGERS	DATE	8/2/78
DRAWN BY	MAG	DATE	9/7/78
CHECKED BY		DATE	
APPROVED BY		DATE	

Confidential - Property of Siemens Industry, Inc. Building Technologies Division

TPS3-12 SERIES
400K-500K w/ DS
NEMA RATING: 1

43D-TPS3-12500DS-1M

SHEET 1 OF 1