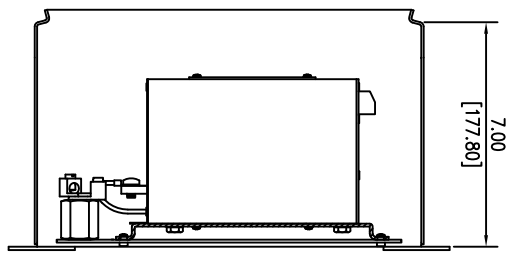
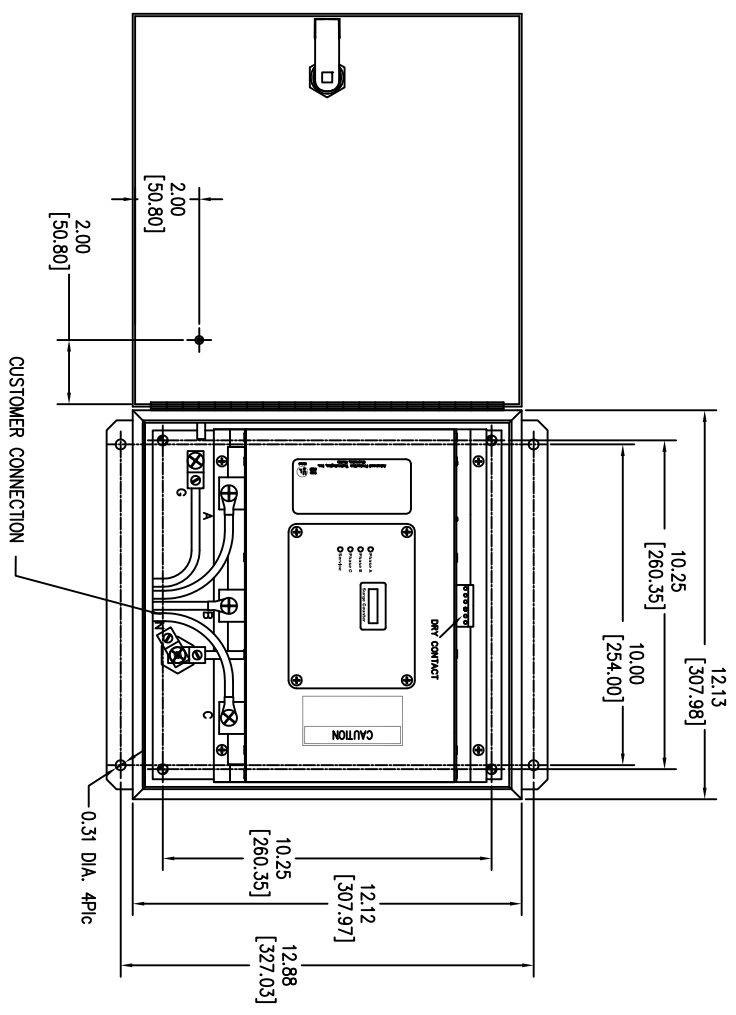


SURGE PROTECTIVE DEVICE (SPD)
WEIGHTS & DIMENSIONS
NEMA RATING: 4X STAINLESS STEEL



ENCLOSURE SPECS.
DESC: ENCLOSURE, HINGED
DIM: 12"H x 12"W x 7"D
MAT: STAINLESS STEEL, 14 GAUGE
FINISH: STAINLESS STEEL
NEMA RATING: 4X
DEVICE WEIGHT: 24.20LBS. (10.97KG.)

Rev	C.N.	Date
△		
□		
Denotes latest changes.		
Critical dimension.		
H. DRIGGERS 6/27/26 PREPARED M.A.G. 6/27/26 CHECKED M.A.G. 6/27/26 DRAWN M.A.G. 6/27/26 DESIGNED M.A.G. 6/27/26 APPROVED M.A.G. 6/27/26 BY M.A.G. 6/27/26 DATE 6/27/26 TITLE 43D-TPS3-12500-4XM SHEET 1 OF 1		
Confidential - Property of Siemens Industry, Inc. Building Technologies Division		
TPS3-12 SERIES 400k-500k w/o DS NEMA RATING: 4X		