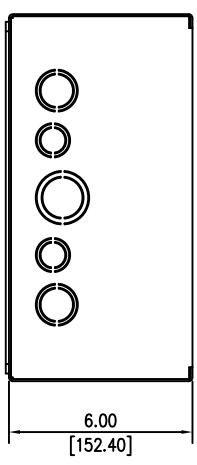
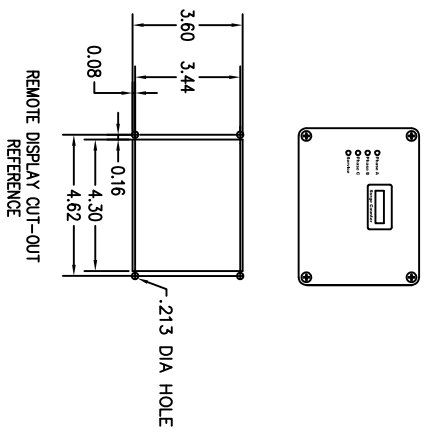
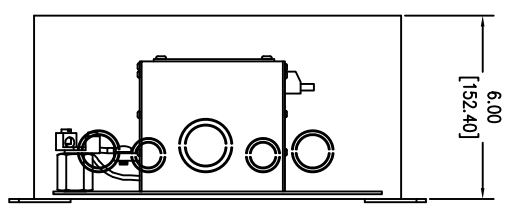
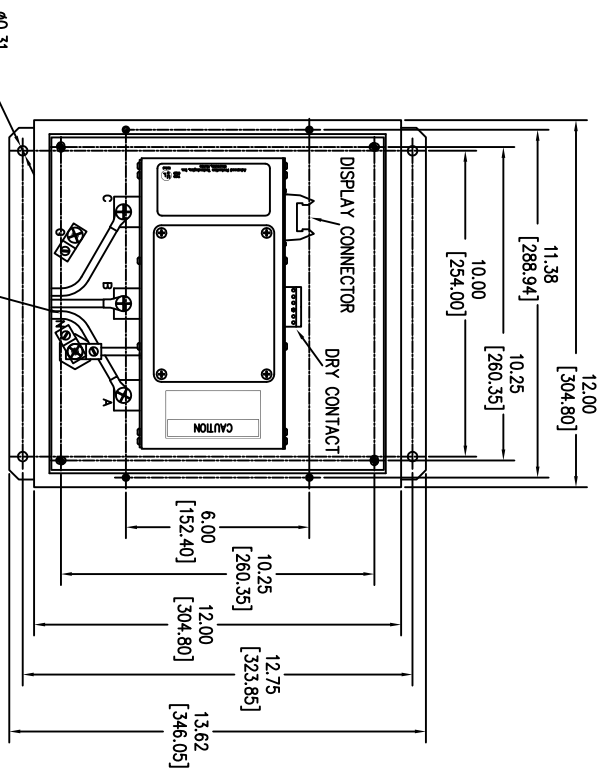
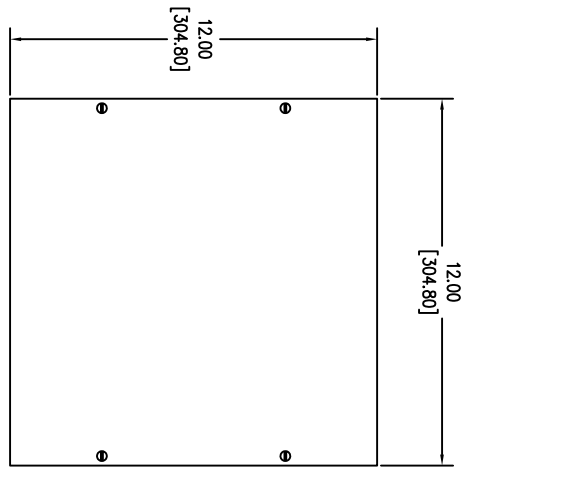


SURGE PROTECTIVE DEVICE (SPD)
WEIGHTS & DIMENSIONS
NEMA RATING: 1



ENCLOSURE SPECS:
DESC: ENCLOSURE, SCREWCOVER PULLBOX
DIM: 12"H x 12"W x 6"D
MAT: CARBON STEEL, 16 GAUGE
FINISH: POWDERCOAT ANSI 61 GRAY
NEMA RATING: 1
DEVICE WEIGHT: 14.80LBS. (6.71KG.)

Rev	C.N.	Date
△		
□		
Denotes latest changes.		
Critical dimension.		
H. DRIGGINS 6/17/26 MFG 6/17/26 43D-TPS3-12300-1M NONE		
Confidential - Property of Siemens Industry, Inc. Building Technologies Division		
TPS3-12 SERIES 100k-300k w/o DS NEMA RATING: 1		
SHEET 1 OF 1		