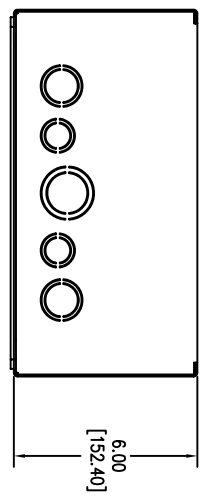
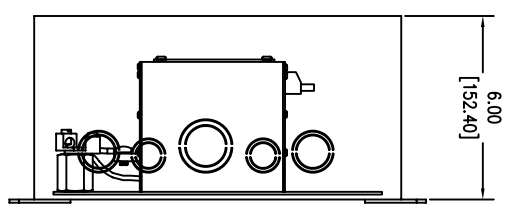
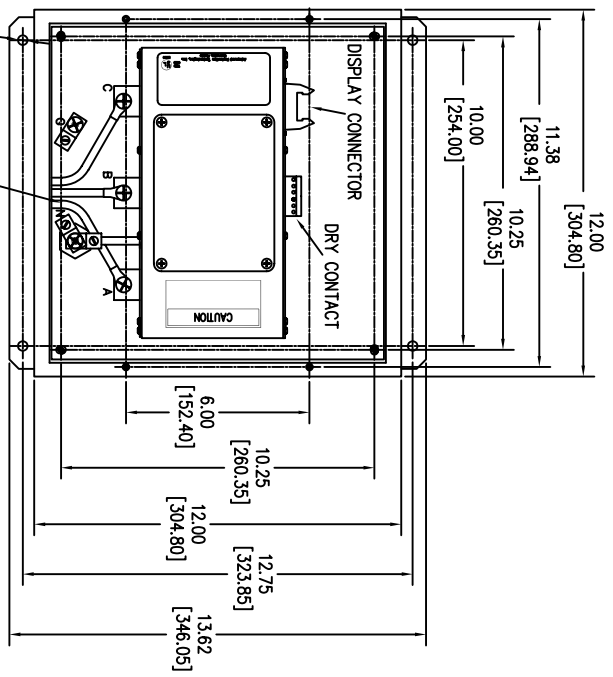
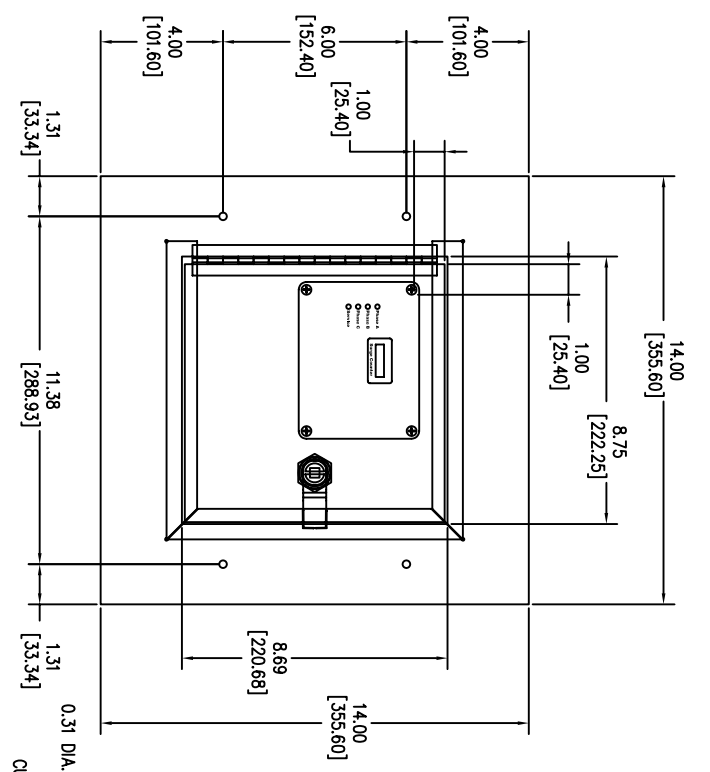


**SURGE PROTECTIVE DEVICE (SPD)  
WEIGHTS & DIMENSIONS  
NEMA RATING: 1 FLUSHMOUNT**



ENCLOSURE SPECS.  
DESC: ENCLOSURE, FLUSHMOUNT PULLBOX  
DIM: 12"H x 12"W x 6"D  
MAT: CARBON STEEL, 16 GAUGE  
FINISH: POWDERCOAT ANSI 61 GRAY  
NEMA RATING: 1  
DEVICE WEIGHT: 19.10LBS. (8.68KG.)

Rev	C.N.	Date
△	-	Denotes latest changes.
□	-	Critical dimension.
<p>Siemens Industry, Inc. Building Technologies Division</p> <p>TPS3-12 SERIES 100K-300K w/o DS FLUSHMOUNT NEMA: 1</p> <p>43D-TPS3-12300-FM1M</p>		