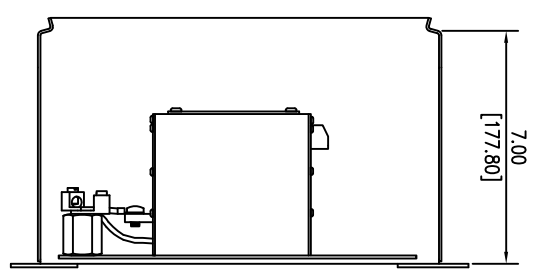
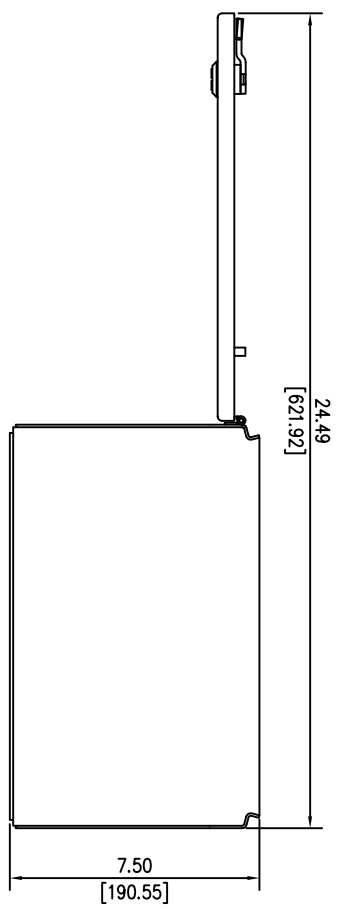
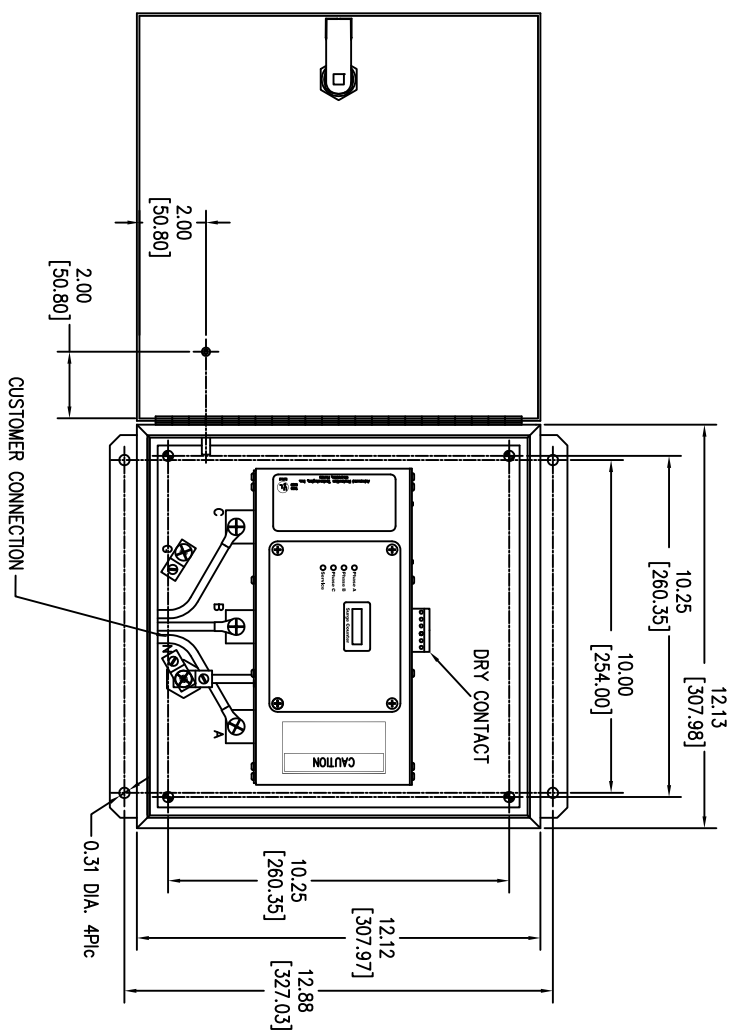


**SURGE PROTECTIVE DEVICE (SPD)
WEIGHTS & DIMENSIONS
NEMA RATING: 4X STAINLESS STEEL**



ENCLOSURE SPECS.
DESC: ENCLOSURE, HINGED
DIM: 12"H x 12"W x 7"D
MAT: STAINLESS STEEL, 14 GAUGE
FINISH: STAINLESS STEEL
NEMA RATING: 4X
DEVICE WEIGHT: 22.20LBS. (10.06KG.)

Rev	C.N.	Date
△	-	Denotes latest changes.
□	-	Critical dimension.

DESIGNED BY H. DRIGGERS	DATE 6/17/26	Confidential - Property of Siemens Industry, Inc. Building Technologies Division
DRAWN BY MAG	DATE 6/17/26	
TPS3-12 SERIES 100K-300K w/o DS NEMA RATING: 4X		43D-TPS3-12300-4XM
NONE		