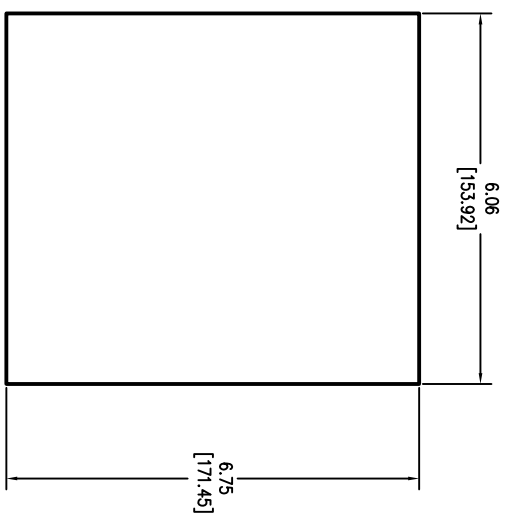
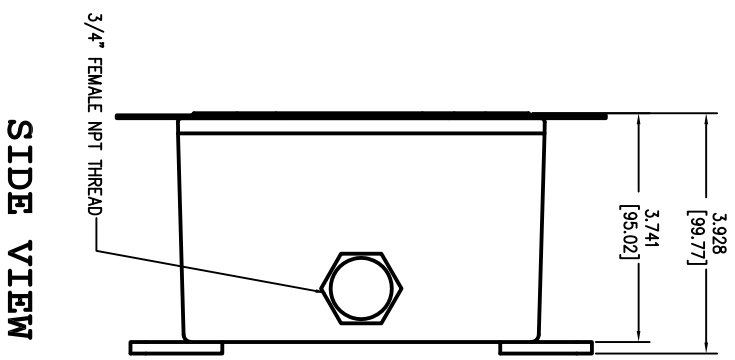
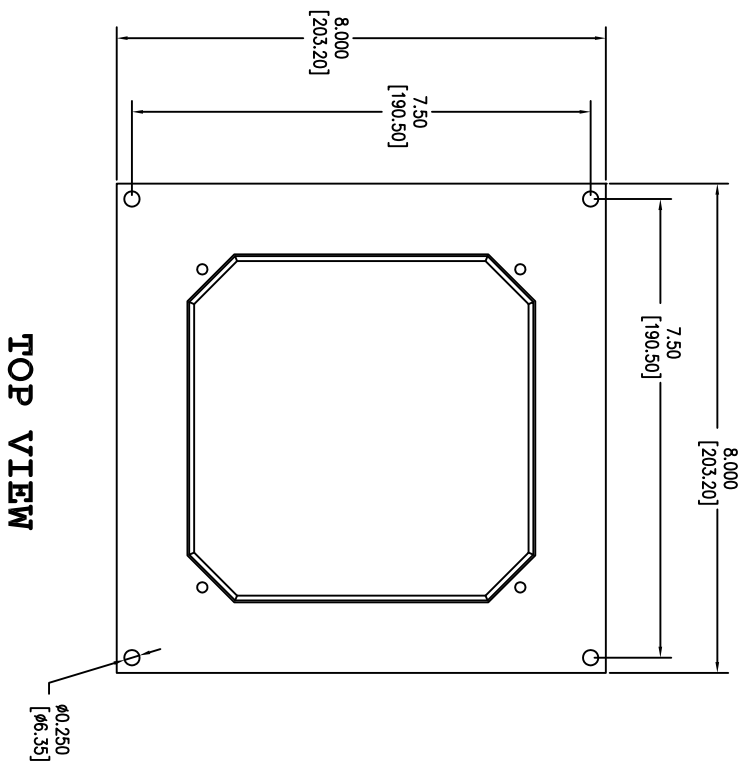


SURGE PROTECTIVE DEVICE (SPD)
WEIGHTS & DIMENSIONS
NEMA RATING: 4X NON METALLIC
FLUSHMOUNT KIT



MOUNTING HOLE IN WALL

ENCLOSURE SPECS:
DESC: NON-METALLIC ENCLOSURE WITH FLUSHMOUNT KIT
DIM: 6.00"H x 6.00"W x 3.93"D
MAT: POLYCARBONATE (V2 & F1)
FINISH: GRAY
NEMA RATING: 4X
DEVICE WEIGHT: 5.29LBS. (2.39KG.)

Rev	C.N.	Date
△		Denotes latest changes.
□		Critical dimension.

DESIGNED BY H. DRIGGERS	DATE 6/17/26	Confidential - Property of Siemens Industry, Inc. Building Technologies Division
DRAWN BY MAG	DATE 6/17/26	
TPS3-11 SERIES 100K-200K FLUSHMOUNT NEMA: 4X		
43D-TPS3-11-FM4XM		
SCALE NONE		
SHEET 1 OF 1		