

Meter/Main Breaker Combination



| Main Ampere Rating | Catalog Number | No. of Spaces | No. of Circuits | Phase | Main Ampere Rating |
|--------------------|----------------|---------------|-----------------|--------|--------------------|
| 200 | JC0406L1200RGA | 4 | 6 | Single | 200 |

Features

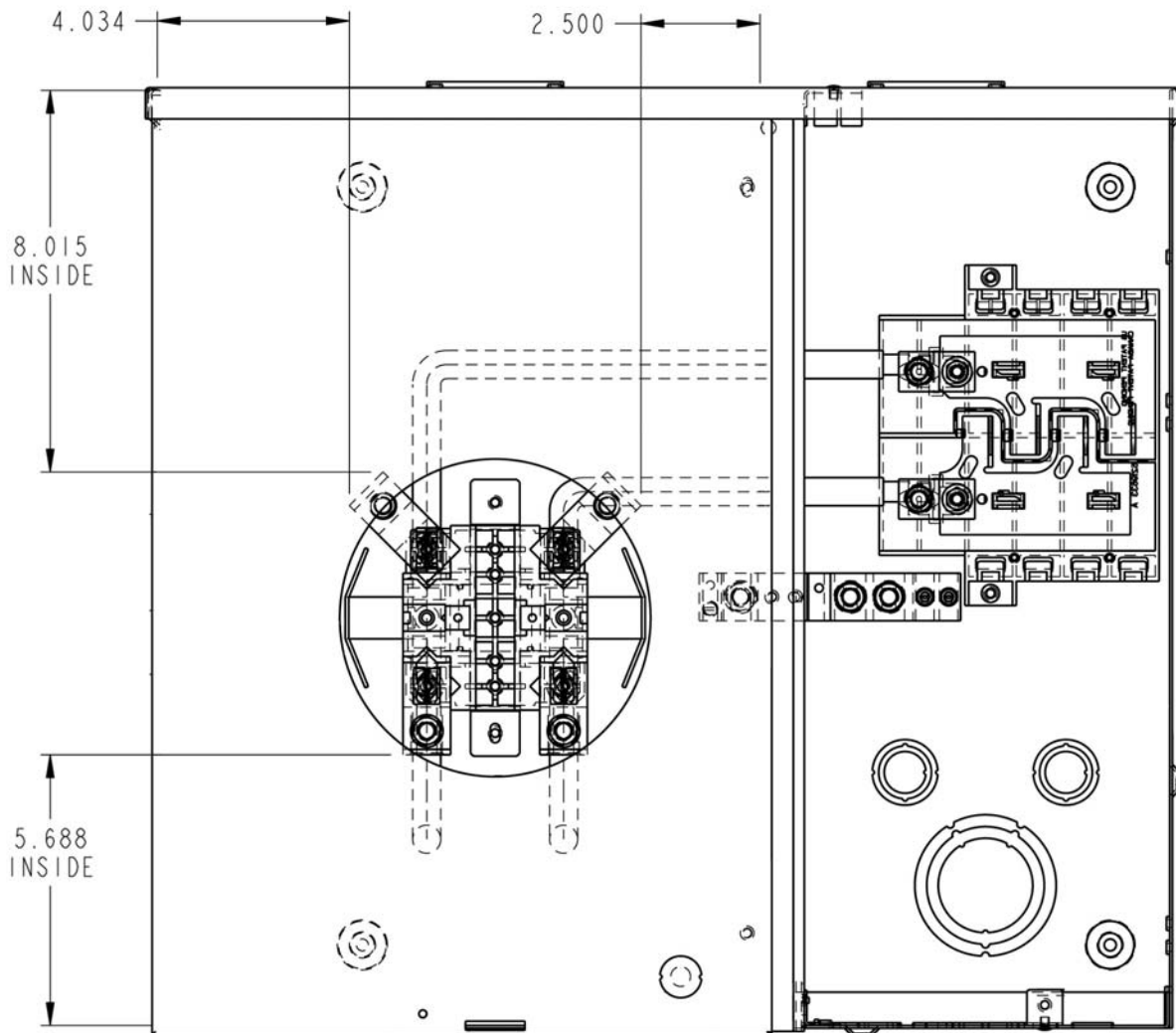
- Designed to meet Georgia Power requirements
- UL Listed only for use as service entrance equipment
- Overhead and underground feed
- Side hinged door, only one screw required to remove door
- Captive deadfront screw
- 22K AIC rating
- Meter socket jaw guides provided on ringless devices
- Ring and ringless versions available
- 5th jaw option available
- Horn bypass option available
- Surface mount
- NEMA Type 3R enclosure with painted G90 galvanized steel Alstan® tin-plated aluminum bus bars

Technical Specifications

fastfax

MURRAY

Meter/Main Breaker Combination



Murray Electrical Products
Siemens Energy & Automation, Inc.
3333 Old Milton Parkway
Alpharetta, GA 30005

1-800-964-4114

www.murrayelectrical.com

©2007 Siemens Energy & Automation, Inc. All Rights Reserved. Siemens is a registered trademark of Siemens AG. Murray is a registered trademark of Siemens Energy & Automation, Inc. Product names mentioned may be trademarks or registered trademarks of their respective companies. Specifications are subject to change without notice. MYFL-GAPMM-0407 Printed in USA