

# Power Mod™

EUSERC - compliant Tapbox-Pullbox Combination modules (type WET) offer EUSERC compatibility, a wider range of lug options, and extra space for pulling in conductors.

Features include:

- QuickSystem™ features
- Standard compression lug capability
- 750 kcmil AL wire options for most models
- 100K AIC standard for all models
- Broad ampacity ratings from 400 to 1200 Amps
- Removable bottom endwall

#### Tapbox- Pullbox Combination quick reference

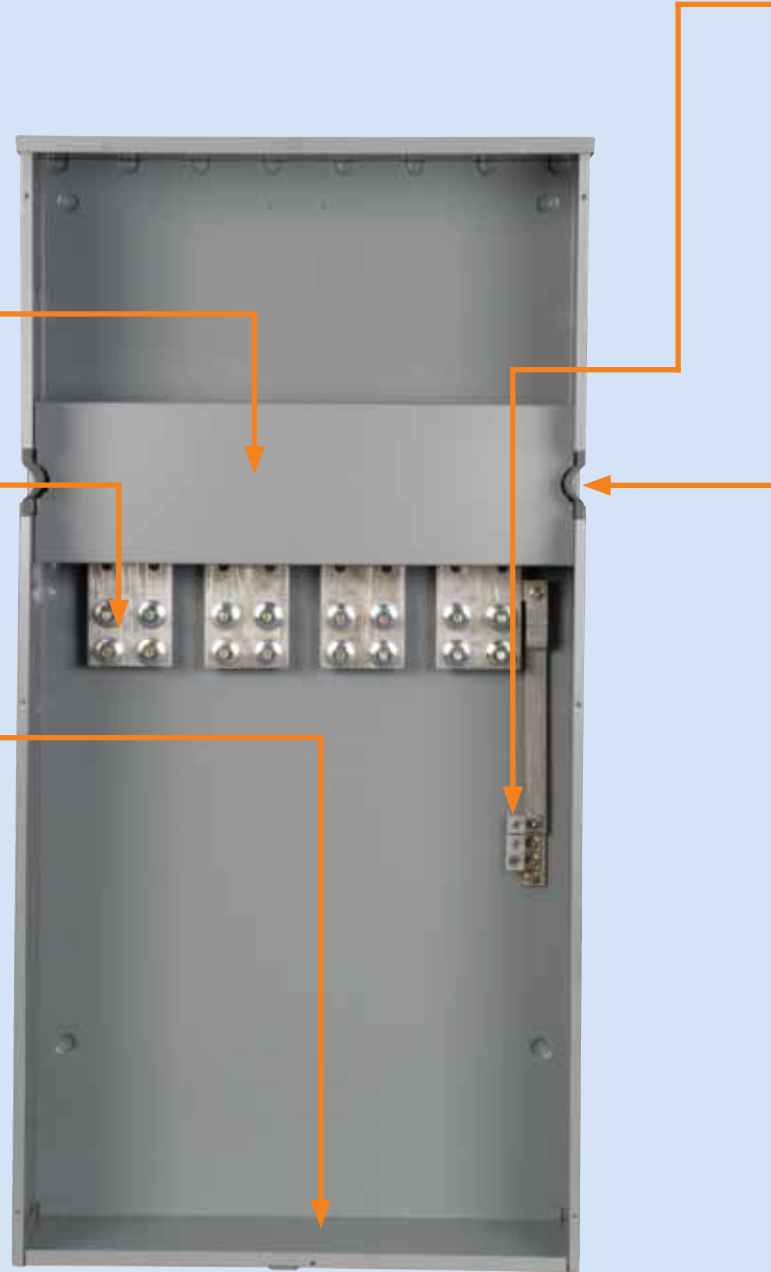
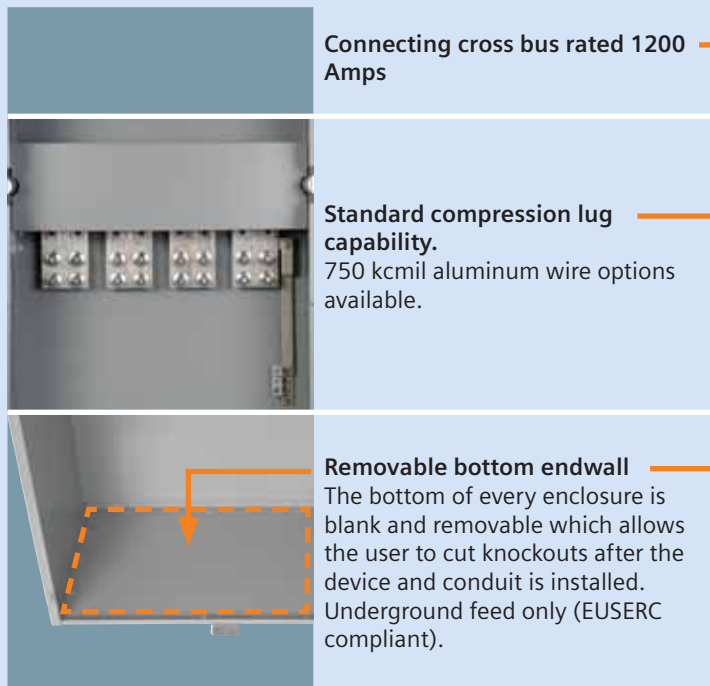
- 400-1200A
- 1200 Amp thru-bus rating
- UL Standard #'s UL67
- UL file # E27100
- AIC Rating (100k)
- Voltage
  - Single phase 120/240V AC max
  - Three phase 240V AC max
- All swing latches and rivets are stainless steel.
- NEMA 3R rated
- G90 galvanized steel
- ANSI 61 paint



## Tapbox - Pullbox Combinations

# Power Mod Tapbox - Pullbox Combinations

## Features

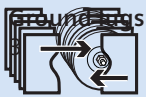


# Power Mod Tapbox - Pullbox Combinations

## Features

### Ground lugs

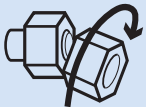
3 ground lugs for bonding additional systems.



Siemens exclusive feature

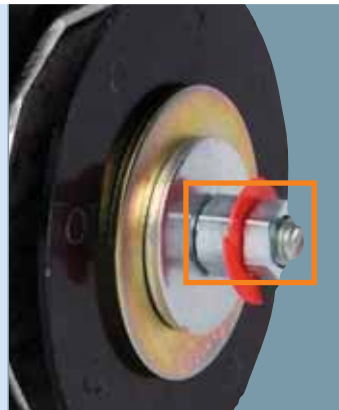
### QuickConnect™

QuickConnect reduces bussing connections from many to one- ensuring a single reliable connection instead of multiple connections.



### QuickTorque™

Eliminates the need for time consuming torque readings, this breakaway nut provides the correct indication of torque of the QuickConnect. When tightened, the outer head twists off at the proper torque for connection, leaving a single nut for future maintenance.



Siemens exclusive feature

### QuickBolt™

QuickBolt eliminates the requirement to line up mechanical connections- instead bolts remain retracted until the openings lineup - allowing the bolts to protrude through automatically. Springs push the bolts through and provide positive pressure to keep bolts in place while wingnuts are attached and tightened.



### Mounting ear

Pivot factory installed mounting ears to minimum or maximum position to provide additional stability when mounting equipment onto wall.



Siemens exclusive feature

### QuickRoll™

QuickRoll eliminates the typical metal brackets for mounting modules to the wall. Instead of metal scraping metal QuickRoll allows the module to glide down the mounting rail via a durable nylon wheel inside mounting bracket.




# Power Mod Tapbox - Pullbox Combinations

## Catalog numbers



**EUSERC tap box modules: 1-phase, 3-wire SN, incoming, 120/240V AC<sup>②</sup>**

**Meets EUSERC requirements, 100k AIC**

Catalog number <sup>②</sup>	Ampere rating	Service feed	Dimensions (inches) <sup>①</sup>			Line side connections	KO drawing no.
			Height	Width	Depth		
WET1400BU	400	UG	46.19	17.63	8.56	1 set of 2 studs 	ET-1
WET1800BU	800	UG	50.19	27.13	11.38	2 sets of 2 studs 	ET-2
WET11200BU	1200	UG	50.19	35.19	11.38	3 sets of 2 studs 	ET-3



**EUSERC tap box modules: 3-phase, 4-wire SN, incoming, 240V AC max.<sup>②</sup>**

**Meets EUSERC requirements, 100k AIC**

Catalog number <sup>②</sup>	Ampere rating	Service feed	Dimensions (inches) <sup>①</sup>			Line side connections	KO drawing no.
			Height	Width	Depth		
WET3400BU	400	UG	46.19	17.63	8.56	1 set of 2 studs 	ET-1
WET3800BU	800	UG	50.19	27.13	11.38	2 sets of 2 studs 	ET-2
WET31200BU	1200	UG	50.19	35.19	11.38	3 sets of 2 studs 	ET-3

<sup>①</sup> Dimensions shown are representative of outside obx dimensions and do not include allowances for mounting bumps, hubs, or hardware protrusions.

<sup>②</sup> QuickConnect not included. Service entrance rated only.

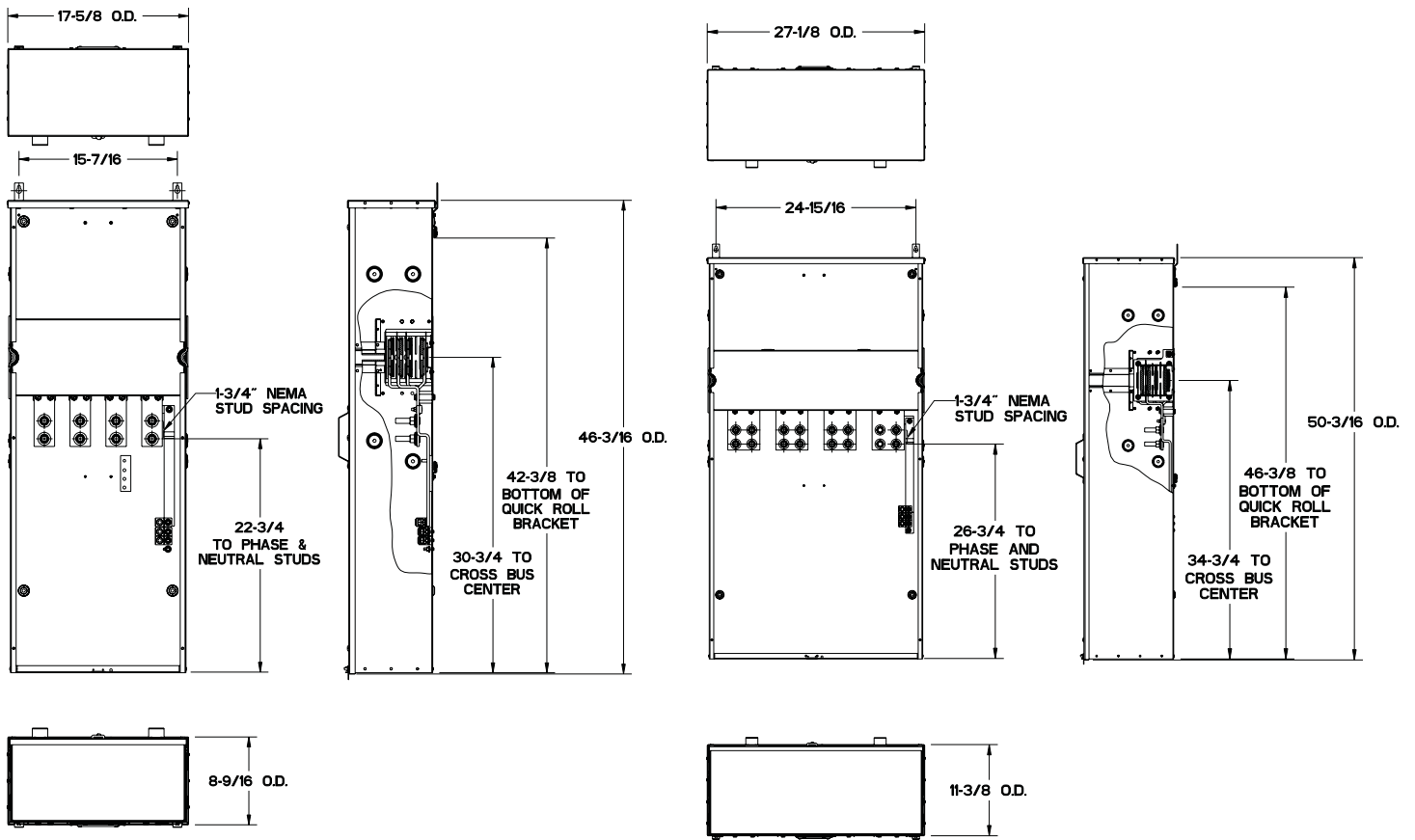
# Power Mod Tapbox - Pullbox Combinations

## Lug selector catalog numbers

			Tapbox-Pullbox Combination lug kits		
		Wire Size ➔	500 kcmil	600 kcmil	750 kcmil
1 Phase	Amperage	# Conductors			
	400	1	n/a	n/a	LK11750N2
		2	LK12500N2	n/a	n/a
	600	2	LK12500N2E	n/a	LK12750N2
	800	2	n/a	LK12600N2	LK12750N2
		3	LK13500N2	n/a	n/a
	1200	3	n/a	n/a	LK13750N2E
		4	LK14500N2E	n/a	n/a
3 Phase	400	1	n/a	n/a	LK31750N2
		2	LK32500N2	n/a	n/a
	600	2	LK32500N2E	n/a	LK32750N2
	800	2	n/a	LK32600N2	LK32750N2
		3	LK33500N2	n/a	n/a
	1200	3	n/a	n/a	LK33750N2E
		4	LK34500N2E	n/a	n/a

# Power Mod Tapbox - Pullbox Combinations

## Knockout diagrams

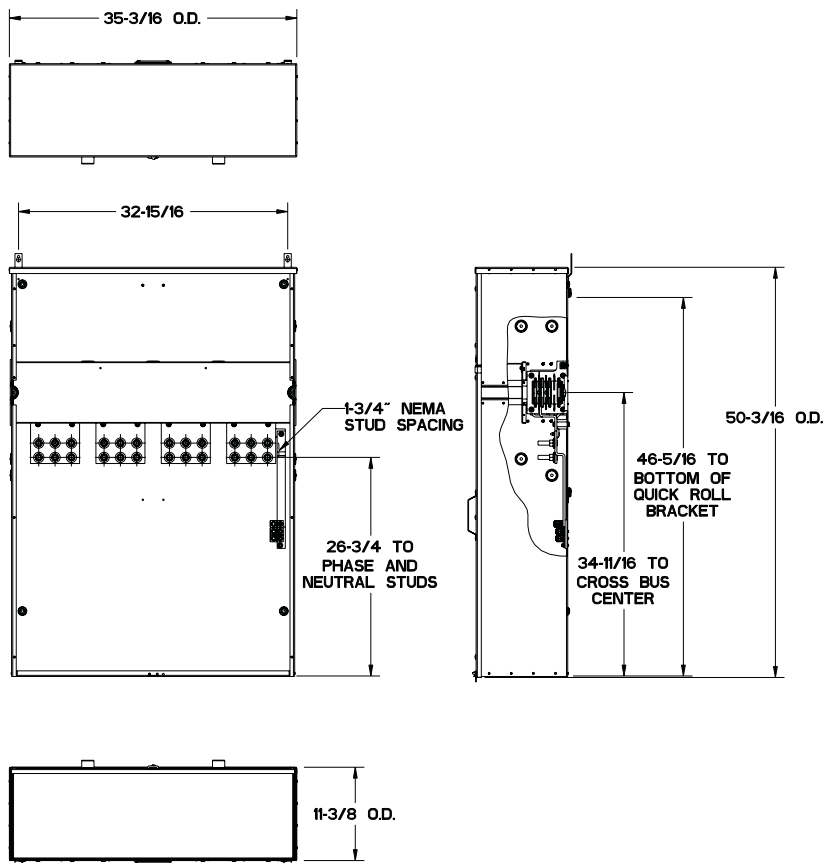


ET-1
WET1400BU
WET3400BU

ET-2
WET1800BU
WET3800BU

# Power Mod Tapbox - Pullbox Combinations

## Knockout diagrams



ET-3
WET11200BU
WET31200BU

# Catalog Number Logic Example

