

Power Mod™

Standard switch modules (type WS) are designed for flexibility, space savings, & durability.

Features include:

- QuickSystem™ features
- Standard compression lug capability
- Invertibility: 400-800 Amp devices can be rotated to accommodate the desired incoming feed direction
- 750 kcmil AL wire options for most models
- 100K AIC standard for all models
- Class T fuse provisions
- Front mounted handle - removes the need for spacers on the side
- Broad ampacity ratings up to 1200 Amps

Standard Switch Mains quick reference

- 400-1200A
- 1200A thru-bus
- UL Standard # UL98
- UL file #E25506
- AIC rating (100k AIC)
- Voltage:
 - Single phase 120/240V AC max
 - Three phase 240V AC max
- All swing latches and rivets are stainless steel
- NEMA 3R rated
- G90 galvanized steel
- ANSI 61 paint



Standard Switch Mains

Power Mod Standard Switch Mains

Features



Vacubreak switch up to 800A
Molded case switch for 1200A.
Order class T fuse types separately.



Standard compression lug capability. 750kcmil AL wire options.



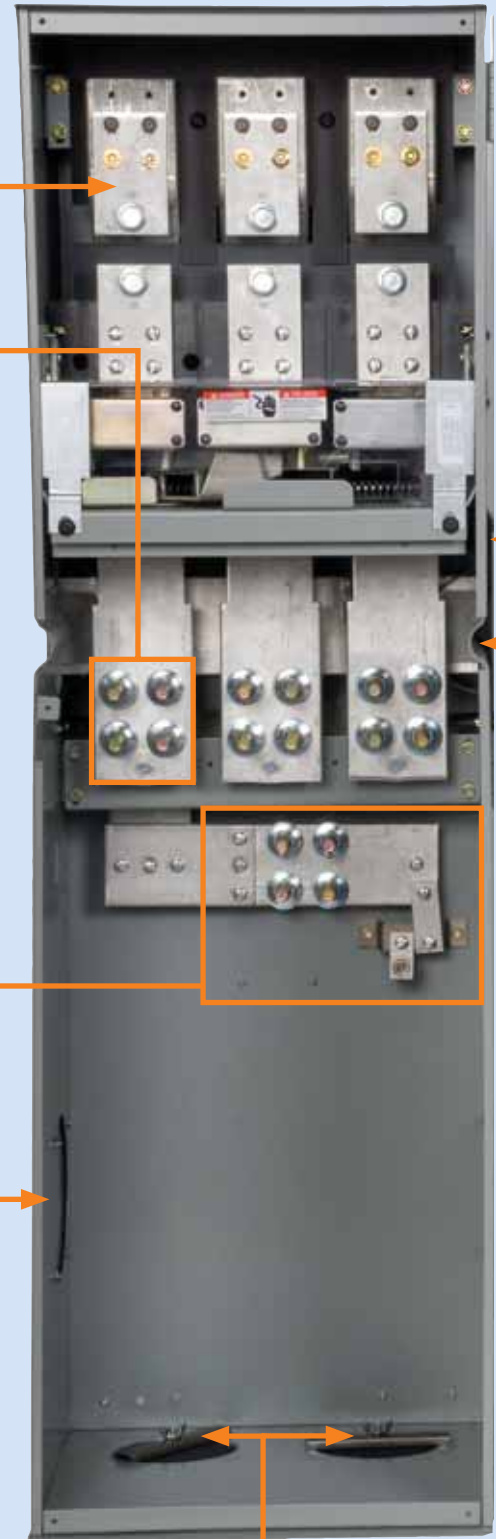
400-800A standard switch modules are invertible to change line side feed connections.



Removable bonding strap
For use in non service entrance applications.



Pullbox Opening
6" knockout for aligning a separate pullbox if required.



4" hub openings
Siemens/Landis & Gyr HD type hubs

Power Mod Standard Switch Mains

Features

Front mounted handle

Saves space by eliminating handles mounted on the side.



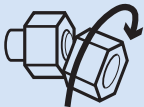
Connecting cross bus rated 1200 Amps



Siemens exclusive feature

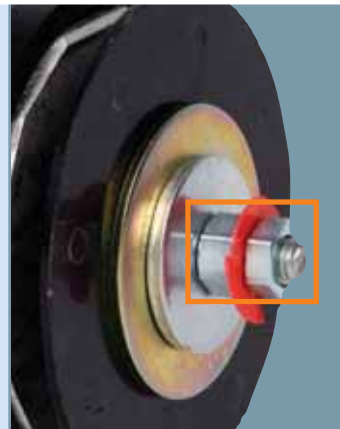
QuickConnect™

QuickConnect reduces bussing connections from many to one - ensuring a single reliable connection instead of multiple connections.



QuickTorque™

Eliminates the need for time consuming torque readings, this breakaway nut provides the correct indication of torque of the QuickConnect. When tightened, the outer head twists off at the proper torque for connection, leaving a single nut for future maintenance.



Siemens exclusive feature

QuickBolt™

QuickBolt eliminates the requirement to line up mechanical connections - instead bolts remain retracted until the openings lineup - allowing the bolts to protrude through automatically. Springs push the bolts through and provide positive pressure to keep bolts in place while wingnuts are attached and tightened.



Mounting ear

Pivot factory installed mounting ears to minimum or maximum position to provide additional stability when mounting equipment onto wall.



Siemens exclusive feature

QuickRoll™



QuickRoll eliminates the typical metal brackets for mounting modules to the wall. Instead of metal scraping metal QuickRoll allows the module to glide down the mounting rail via a durable nylon wheel inside mounting bracket.

Power Mod Standard Switch Mains



Catalog numbers



Fusible switch service entrance modules: 1-phase, 3-wire SN, 120/240V AC, 100k AIC^④

Catalog number	Rating amps	Service feed	Fuse type ^④	Dimensions (inches) ^①			Line side connections	KO drawing no.
				Height	Width	Depth		
WS1400CU ^⑤	400	OH/UG ^②	T	50.13	15.19	16.31	1 set of 2 studs 	S-1
WS1600CU ^⑤	600	OH/UG ^②	T	50.13	15.19	16.31		S-1
WS1800CU ^⑤	800	OH/UG ^②	T	50.13	15.19	16.31	2 sets of 2 studs 	S-2
WS11200BU ^⑥	1200	UG	T	50.06	20.22	16.06	(4) 250- 500 kcmil	S-3

Fusible switch service entrance modules: 3-phase, 4-wire WN, 240V AC Max., 100k AIC^④

Catalog number	Rating amps	Service feed	Fuse type ^④	Dimensions (inches) ^①			Line side connections	KO drawing no.
				Height	Width	Depth		
WS3400CU ^⑤	400	OH/UG ^②	T	50.13	15.19	16.31	1 set of 2 studs 	S-1
WS3600CU ^⑤	600	OH/UG ^②	T	50.13	15.19	16.31		S-1
WS3800CU ^⑤	800	OH/UG ^②	T	50.13	15.19	16.31	2 sets of 2 studs 	S-2
WS31200BU ^⑥	1200	UG	T	50.06	20.22	16.06	(4) 250-500 kcmil	S-3

① Dimensions shown are representative of outside box dimensions and do not include allowances for mounting bumps, hubs, or hardware protrusion.

② Module is invertible - rotate device to point hub openings to appropriate feed direction.

③ 500 kcmil max wire range size.

④ Fuses not included.

⑤ Lugs not included. NEMA II stud pattern lugs must be installed by user or utility. Refer to page 5-5 for lug size options.

⑥ Device uses a molded case switch (looks like a breaker). Class T fuses must be installed in conjunction with the molded case switch for proper operation.

Power Mod Standard Switch Mains

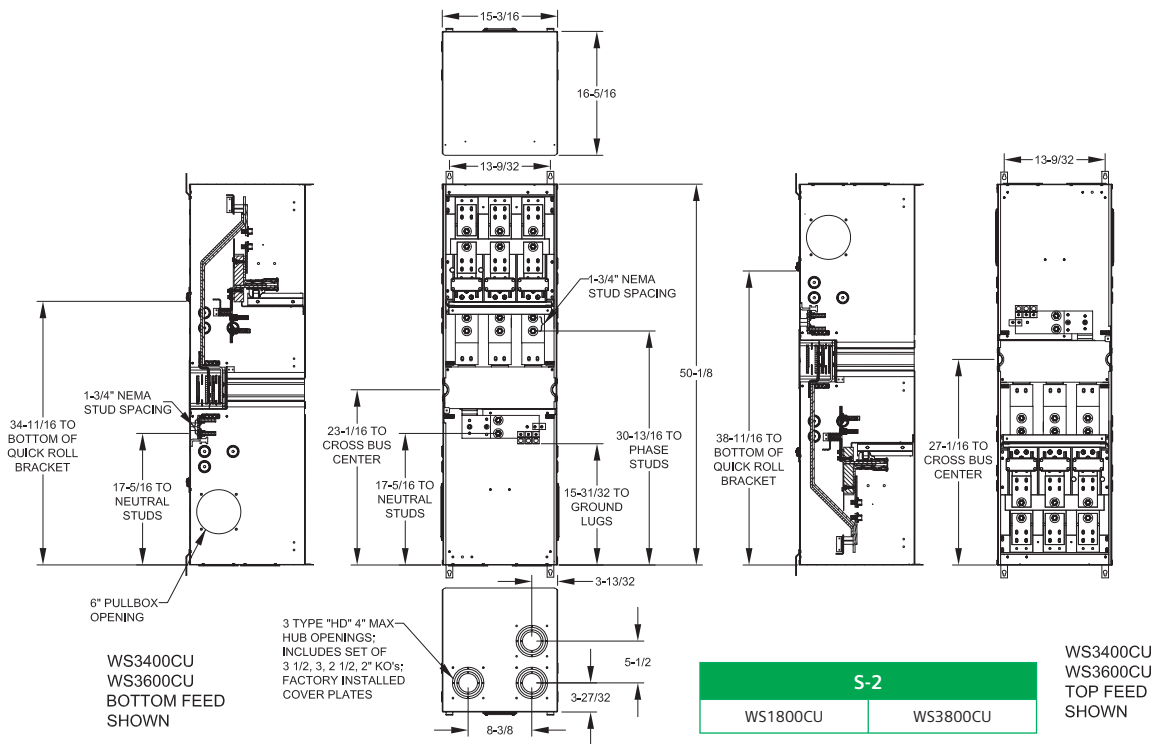
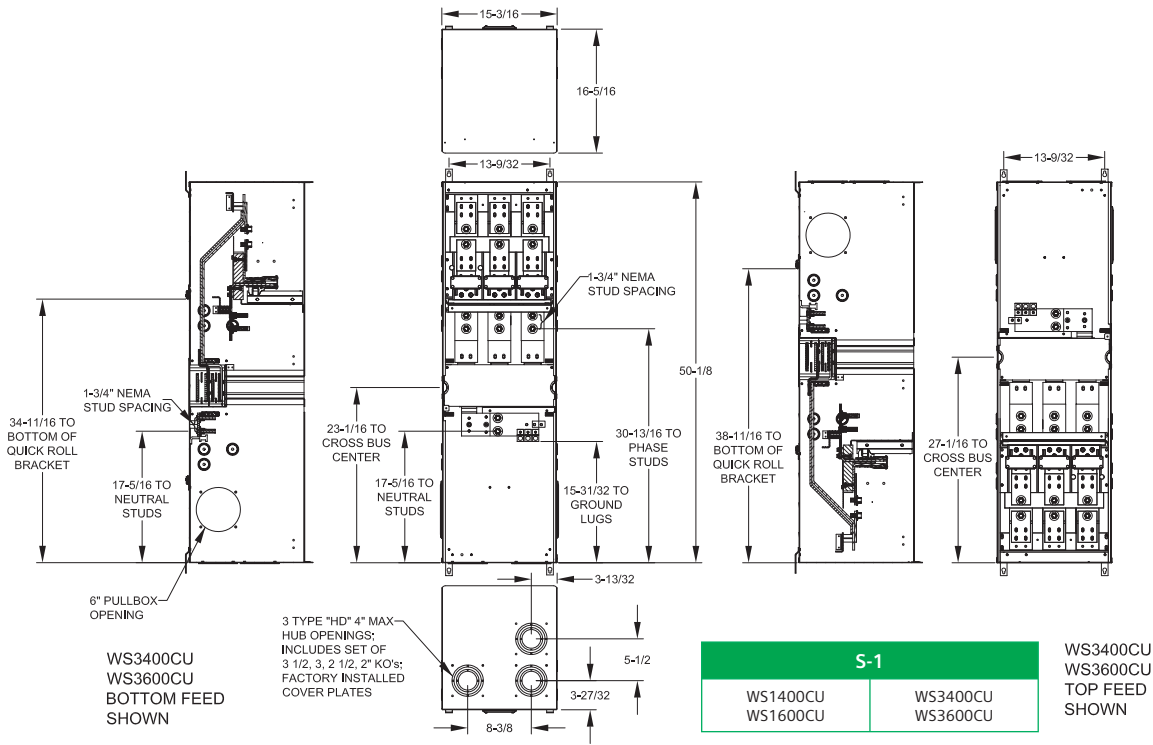
Lug selector catalog numbers

			Fusible switch lug kits		
		Wire size ➔	500 kcmil	600 kcmil	750 kcmil
1 Phase	400	1	n/a	LK11600N2	LK11750N2
		2	LK12500N2	n/a	n/a
	600	2	LK12500N2	n/a	n/a
		800	2	n/a	LK12600N2
	1200		3	LK13500N2	n/a
		4	n/a	n/a	n/a
3 Phase	400	1	n/a	LK31600N2	LK31750N2
		2	LK32500N2	n/a	n/a
	600	2	LK32500N2	n/a	n/a
		800	2	n/a	LK32600N2
	1200		3	LK33500N2	n/a
		4	n/a	n/a	n/a

* Lug kits - Sentron breaker lugs

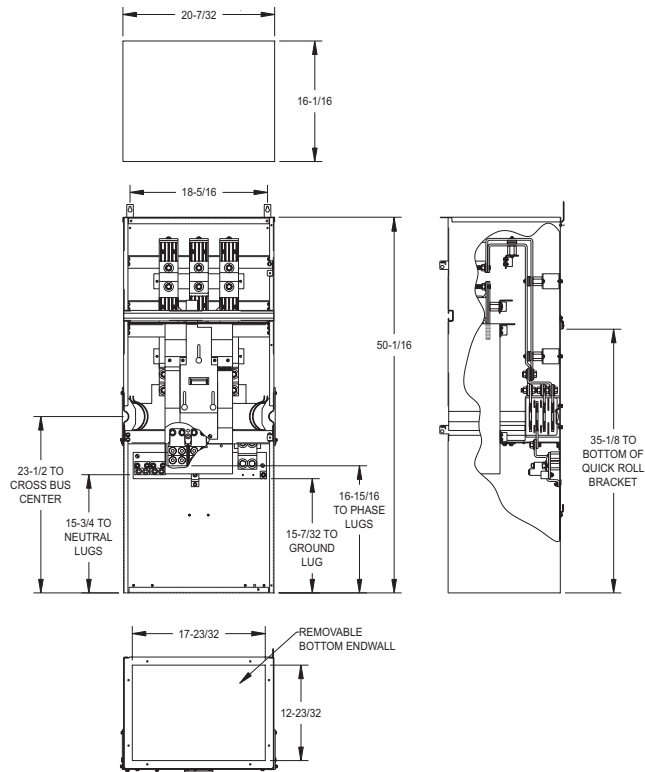
Power Mod Standard Switch Mains

Knockout diagrams



Power Mod Standard Switch Mains

Knockout diagrams



S-3	
WS11200BU	WS31200BU

Catalog number logic example

W S 3 4 0 0 C B D

Enclosure
W = Outdoor

Device
S = Switch

Phase
1 = Single phase
3 = Three phase

Amperage
400
600
800
1200

Incoming feed
U = 100K AIC rated unit
BD = Bus Duct

Incoming feed
C = Top and bottom feed construction
B = Bottom feed construction