

Power Mod™

EUSERC - compliant breaker - pullbox combination modules (type WEB) offer EUSERC compatibility, a wider range of lug options, and extra space for pulling in conductors.

Features include:

- QuickSystem™ features
- Factory installed NEMA II studs
- 750 kcmil AL wire options
- 65K AIC standard, 100K AIC available for all models
- Removable blank bottom endwall
- Externally accessible breaker handle with padlock capability
- Field installable shunt trips
- Large removable ground wire trough with generous space for grounding conductors

Circuit Breaker-Pullbox Combinations quick reference

- 400-1200A
- 1200A thru-bus
- UL standard # UL67
- UL file # E27100
- AIC rating (65k & 100k)
- Voltage
 - Single phase 120/240V AC Max
 - Three phase 240V AC Max
- All swing latches and rivets are stainless steel
- NEMA 3R rated
- G90 galvanized steel
- ANSI 61 paint
- EUSERC drawing numbers 315, 343, and 347



Circuit Breaker - Pullbox Combinations

Circuit Breaker - Pullbox Combinations

Features



Ground lugs
3 ground lugs included for bonding additional systems.

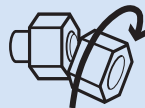
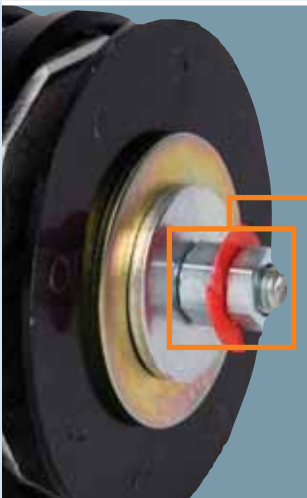


Connecting cross bus rated 1200 Amps

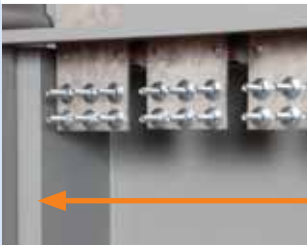


Siemens exclusive feature

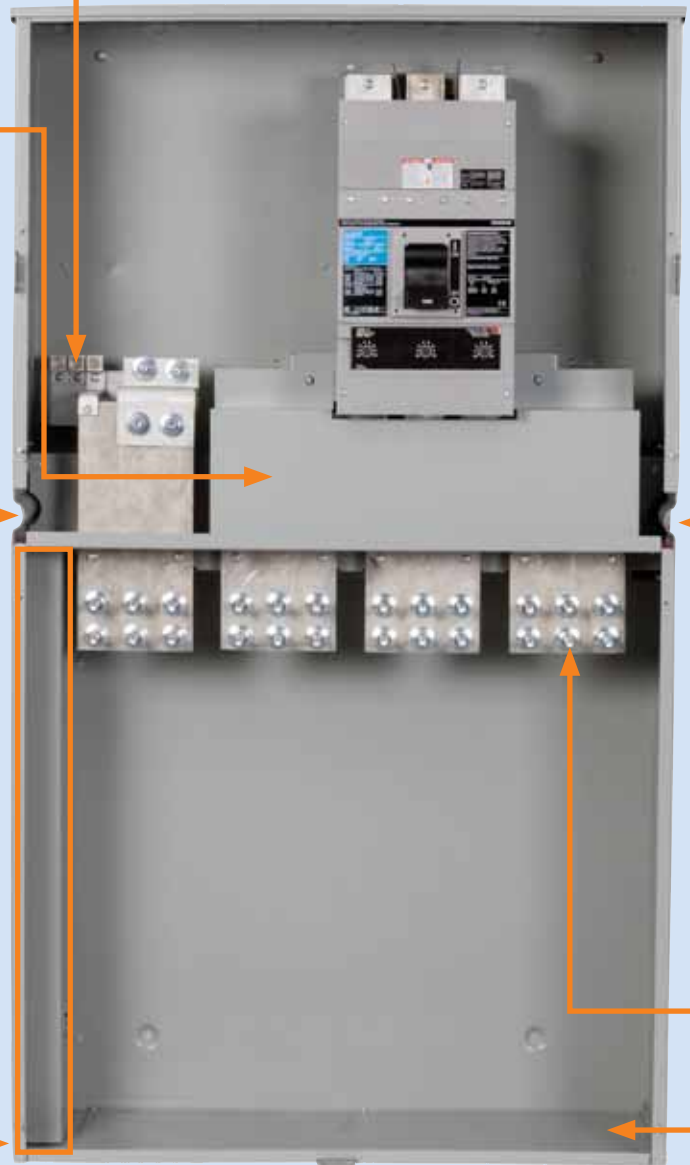
QuickConnect™
QuickConnect reduces bussing connections from many to one - ensuring a single reliable connection instead of multiple connections.



QuickTorque™
Eliminates the need for time consuming torque readings, this breakaway nut provides the correct indication of torque of the Quick-Connect. When tightened, the outer head twists off at the proper torque for connection, leaving a single nut for future maintenance.



Removable wire trough
Provides extra wire bending room and eliminate tangles in wire feeds. Pull on ring to remove trough.



Circuit Breaker - Pullbox Combinations

Features

External main service disconnect

Provides safety with quick convenient access to disconnect made externally. Eliminates taking time to remove cover to disconnect.



Siemens exclusive feature

QuickRoll™

QuickRoll eliminates the typical metal brackets for mounting modules to the wall. Instead of metal scraping metal QuickRoll allows the module to glide down the mounting rail via a durable nylon wheel inside mounting bracket.



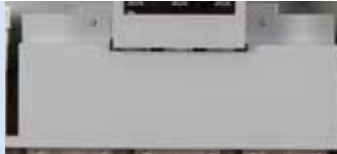
Field installable shunt trips

Shunt trips are offered as a field installed option for applications that require tripping the main remotely.



Insulated barrier between breaker and lugs

Insulated barrier provides protection from live cross bus parts to meet specific utility requirements.



Siemens exclusive feature

QuickBolt™

QuickBolt eliminates the requirement to line up mechanical connections - instead bolts remain retracted until the openings lineup - allowing the bolts to protrude through automatically. Springs push the bolts through and provide positive pressure to keep bolts in place while wingnuts are attached and tightened.



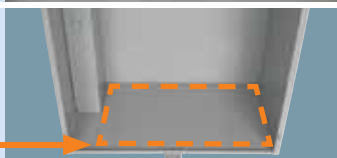
Incoming service terminating lugs

Factory installed NEMA II studs. For mechanical compression lugs.



Removable bottom endwall

The bottom of every enclosure is blank and removable which allows the user to cut knockouts after the device and conduit is installed.



Back View:

Mounting ears

Pivot factory installed mounting ears to minimum or maximum position to provide additional stability when mounting.


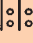



Circuit Breaker - Pullbox Combinations

Catalog numbers



Combination circuit breaker and pullbox modules: 1-phase, 3-wire SN, 120/240V AC max
Meets EUSERC requirements

Catalog number (65k AIC)	Catalog number (100k AIC) ^②	Ampere rating	Service feed	Breaker type ^④	Dimensions (inches) ^①			Line side ^③ connections	KO drawing no.
					Height	Width	Depth		
WEB1400B	WEB1400BU	400	UG	JXD6	54.88	28.28	13.06	1 set of 2 studs 	EB-1
WEB1600B	WEB1600BU	600	UG	LXD6	54.88	28.28	13.06	2 sets of 2 studs	EB-2
WEB1800B	WEB1800BU	800	UG	MXD6	59.34	34.22	12.47		EB-3
WEB11000B	WEB11000BU	1000	UG	NXD6	59.34	34.22	12.47	3 sets of 2 studs	EB-4
WEB11200B	WEB11200BU	1200	UG	NXD6	59.34	34.22	12.47		EB-4

① Dimensions shown are representative of outside box dimensions and do not include allowances for mounting bumps, hubs, or hardware protrusions.

② Non standard module. Has longer ordering lead times, contact sales office for additional ordering information.

③ Refer to page 4-6 for lug size options. Lug kits available for 750 conductor size



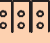
④ All breakers have a non-interchangeable trip unit.

Circuit Breaker - Pullbox Combinations

Catalog numbers



Combination circuit breaker and pullbox modules: 3-phase, 4-wire SN, 240V AC max
Meets EUSERC requirements

Catalog number (65k AIC)	Catalog number (100k AIC) ^②	Ampere rating	Service feed	Breaker type ^④	Dimensions (inches) ^①			Line side ^③ connections	KO drawing no.
					Height	Width	Depth		
WEB3400B	WEB3400BU	400	UG	JXD6	54.88	28.28	13.06	1 set of 2 studs 	EB-1
WEB3600B	WEB3600BU	600	UG	LXD6	54.88	28.28	13.06	2 sets of 2 studs	EB-2
WEB3800B	WEB3800BU	800	UG	MXD6	59.34	34.22	12.47		EB-3
WEB31000B	WEB31000BU	1000	UG	NXD6	59.34	34.22	12.47	3 sets of 2 studs	EB-4
WEB31200B	WEB31200BU	1200	UG	NXD6	59.34	34.22	12.47		EB-4

① Dimensions shown are representative of outside box dimensions and do not include allowances for mounting bumps, hubs, or hardware protrusions.

② Non standard module. Has longer ordering lead times, contact sales office for additional ordering information.

③ Refer to page 4-6 for lug size options. Lug kits available for 750 conductor size

④ All breakers have a non-interchangeable trip unit.

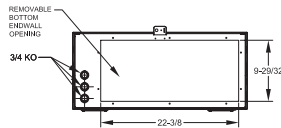
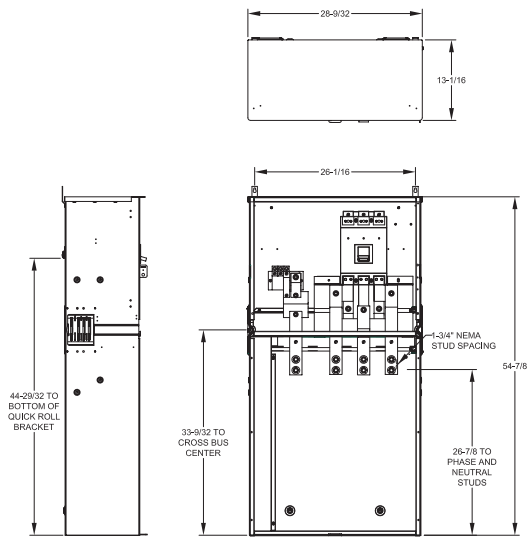
Circuit Breaker - Pullbox Combinations

Lug selector catalog numbers

			Circuit breaker-pullbox combination lug kits		
		Wire Size ➤	500 kcmil	600 kcmil	750 kcmil
1 Phase	Amperage	# Conductors			
	400	1	n/a	n/a	LK11750N2
		2	LK12500N2	n/a	n/a
	600	2	LK12500N2E	n/a	LK12750N2
	800	2	n/a	LK12600N2	LK12750N2
		3	LK13500N2	n/a	n/a
	1200	3	n/a	n/a	LK13750N2E
4		LK14500N2E	n/a	n/a	
3 Phase	400	1	n/a	n/a	LK31750N2
		2	LK32500N2	n/a	n/a
	600	2	LK32500N2E	n/a	LK32750N2
	800	2	n/a	LK32600N2	LK32750N2
		3	LK33500N2	n/a	n/a
	1200	3	n/a	n/a	LK33750N2E
		4	LK34500N2E	n/a	n/a

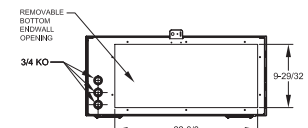
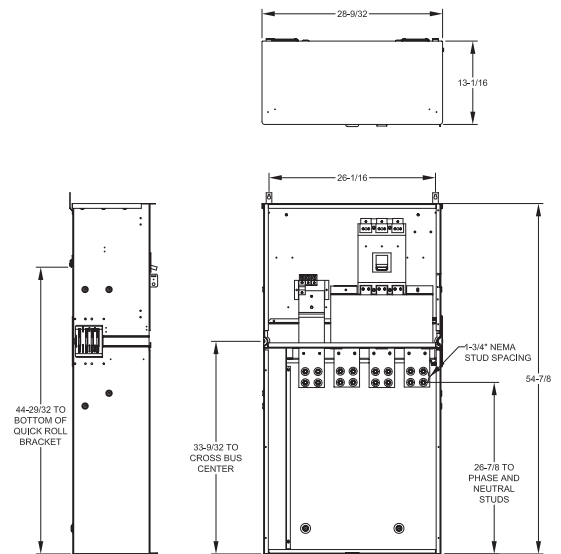
Circuit Breaker - Pullbox Combination

Knockout diagrams



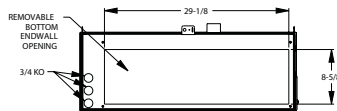
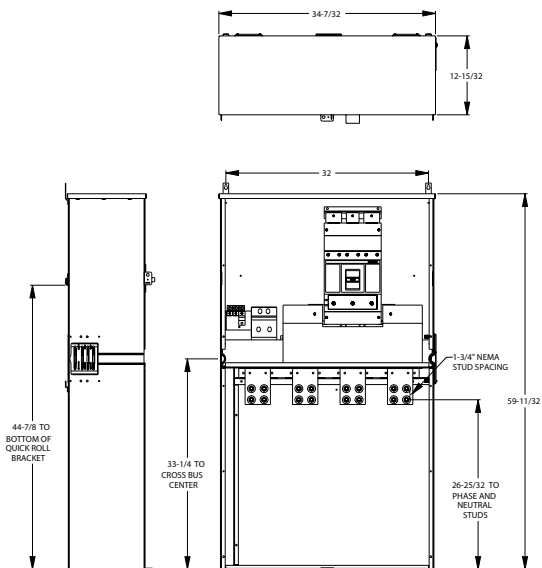
EB-1

WEB1400B	WEB1400BU
WEB3400B	WEB3400BU



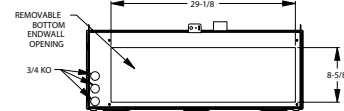
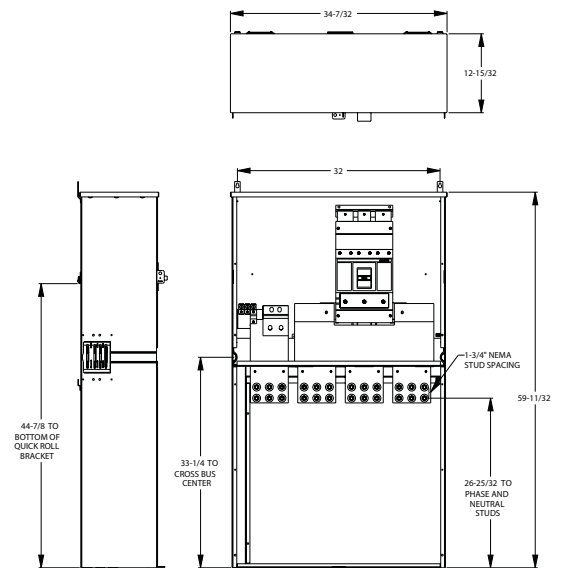
EB-2

WEB1600B	WEB1600BU
WEB3600B	WEB3600BU



EB-3

WEB1800B	WEB1800BU
WEB3800B	WEB3800BU



EB-4

WEB11000B	WEB11000BU
WEB11200B	WEB11200BU
WEB31000B	WEB31000BU
WEB31200B	WEB31200BU

Catalog Number Logic Example

W EB 3 4 0 0 B U

Enclosure
W = Outdoor

Device
EB = EUSERC Breaker

Phase
1 = Single phase
3 = Three phase

Amperage
400
600
800
1000
1200

Incoming Feed
U = 100K AIC rated unit
Blank = 65k AIC rated unit

Incoming Feed
B = Bottom feed construction