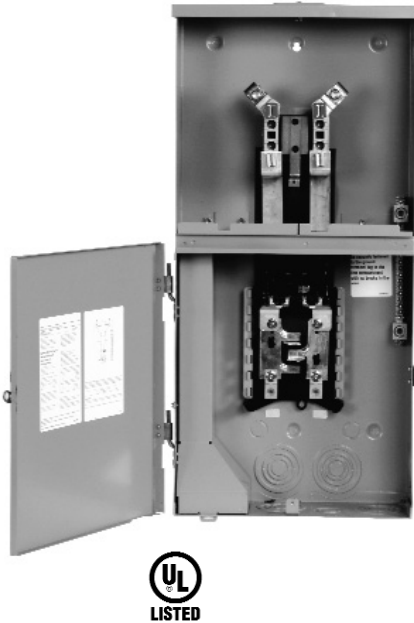


Meter / Load Center Combinations

4 Circuit, Surface Mount, Pole Mountable

Accessories

- Top end wall has type RX hub provisions
 - EC38597 (1-1/4")
 - EC38598 (1-1/2")
 - EC38599 (2")
 - EC385600 (2-1/2")
- Bottom end wall has type HC hub provisions
 - ECHC200 (2")
 - ECHC250 (2-1/2")
 - ECHC200 (3")
- Ground bar kits:
 - ECGB5, ECGB10, ECGB14 (check wiring diagram for limitations)
- 2/0 - #4 wire range lug kit: ECLK2
- 5th jaw assembly: EC5J2
- Mechanical breaker interlock: ECQML12
- Meter socket jumper: ECJS
- Filler plate: QF3 or ECQF3



Features

- Designed to meet Georgia Power requirements
- UL listed only for use as service entrance equipment
- NEMA Type 3R enclosure with painted, G90 galvanized steel
- 22,000A IC rating
- Overhead and underground feed
- Surface mounting, pole mountable
- Feed thru lugs provided
- Key hole shaped mounting holes for easy hanging
- Deadfront pull ring
- Captive deadfront screw
- INSTA-WIRE® neutrals
- Visible neutrals
- Tin plated copper bus bars
- Side-hinged load center door; requires the removal of only one screw to remove door.
- See wiring diagram for lug sizes and torque data.

Technical Specifications

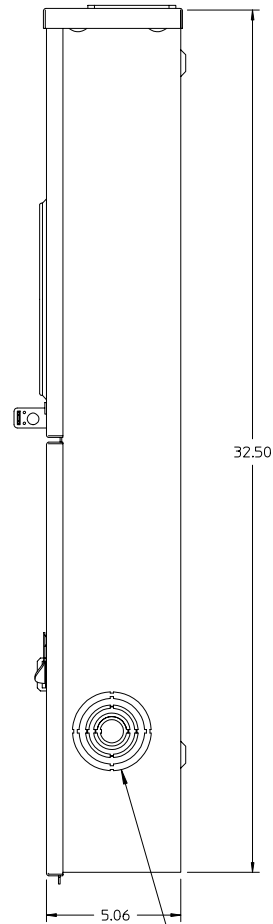
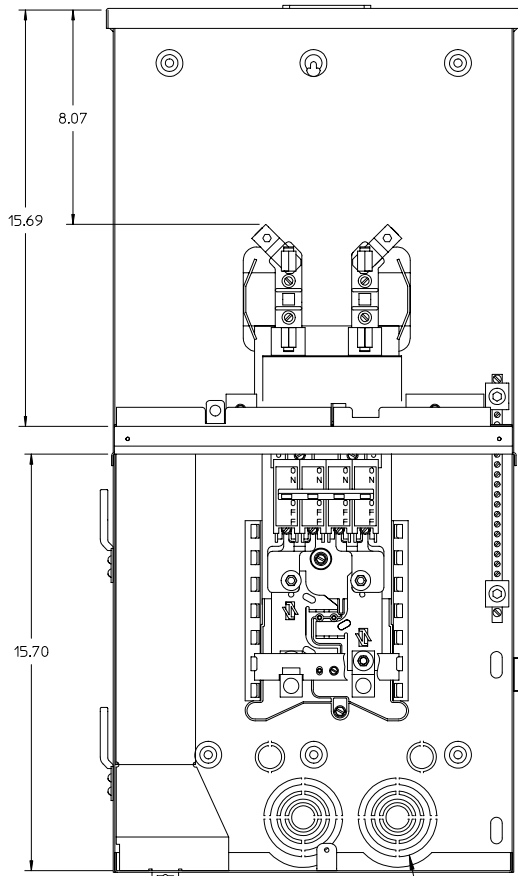
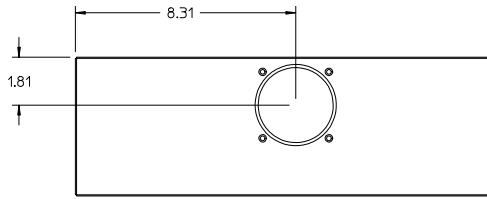
Main Ampere Rating	Catalog Number	No. of Spaces	No. of Circuits	Meter Cover
150	MC0408B1150RGA	4	8	Ringless
200	MC0408B1200RGA	4	8	Ringless

fastfax

SIEMENS

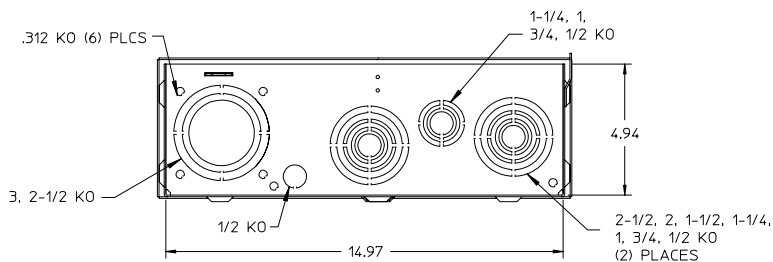
Meter / Load Center Combinations

4 Circuit, Surface Mount, Pole Mountable



2-1/2, 2, 1-1/2, 1-1/4,
1, 3/4, 1/2 KO
(2) PLACES

2-1/2, 2, 1-1/2, 1-1/4,
1, 3/4, 1/2 KO (5) PLCS



Siemens Energy & Automation, Inc.

3333 Old Milton Parkway
Alpharetta, GA 30005

1-800-964-4114
info.sea@siemens.com

www.sea.siemens.com

©2007 Siemens Energy & Automation, Inc. All Rights Reserved.

Siemens is a registered trademark of Siemens AG. Product names mentioned may be trademarks or registered trademarks of their respective companies. Specifications are subject to change without notice.

RPFL-GAPO4-0207 Printed in USA