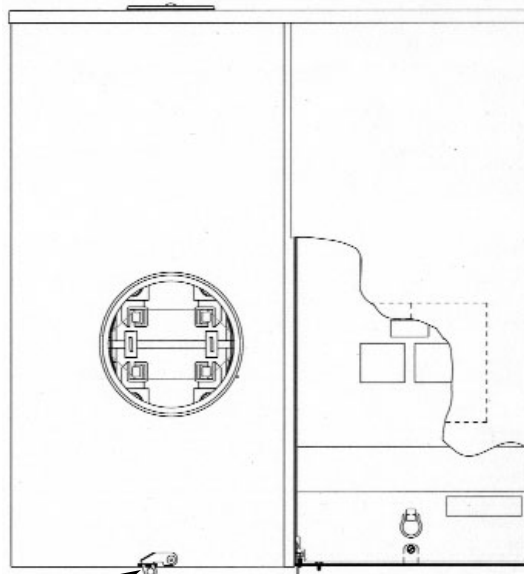


Meter/Main Breaker Combinations

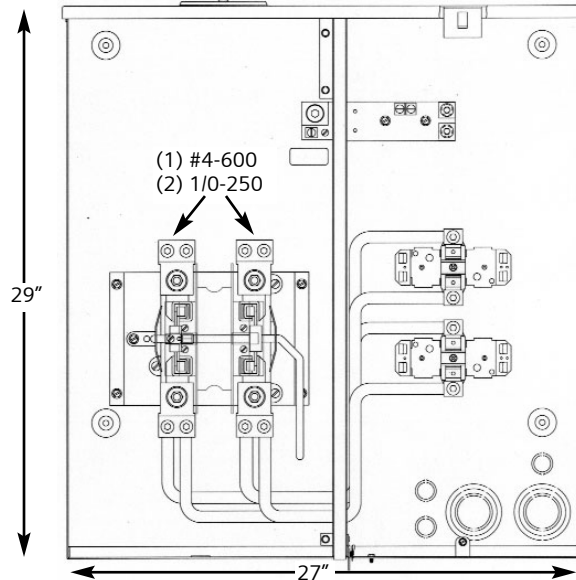
JC0404L1400RLM

FEATURES

- UL Listed only for use as service entrance equipment
- Overhead and underground feed
- Side hinged door, only one screw required to remove door
- 65K AIC rating
- FMG and AEP approved
- Landis & Gyr type HQ lever bypass meter socket rated for 320 amps continuous
- Use HD type hubs
- Provisions for 2 field added MD-T(R), MD-HT(R), MD-MT(R), MP-T, MP-HT, MP-MT type main breakers
- Field addable 5th terminal (S35815-2)



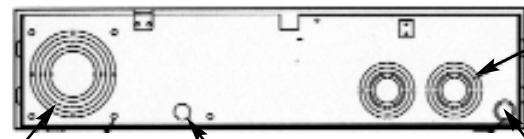
Stainless Steel Latch and Hasp



(1) #4-600
(2) 1/0-250

29"

27"



2-1/2", 2", 1-1/2", 1-1/4", 1" K.O. (4 places)

4", 3-1/2", 3", 2-1/2", 2" K.O.

1/2" K.O.

3/4", 1/2" K.O. (4 places)

fastfax

MURRAY

Murray Electrical Products • Siemens Energy & Automation, Inc. • 3333 Old Milton Parkway, Alpharetta, GA 30005 • 1-800-964-4114
www.murrayconnect.com

©2003 Siemens Energy & Automation, Inc. All Rights Reserved.

Siemens is a registered trademark of Siemens AG. Murray is a registered trademark of Siemens Energy & Automation, Inc. Product names mentioned may be trademarks or registered trademarks of their respective companies. Specifications are subject to change without notice.