

EUSERC Meter/Load Center Combinations

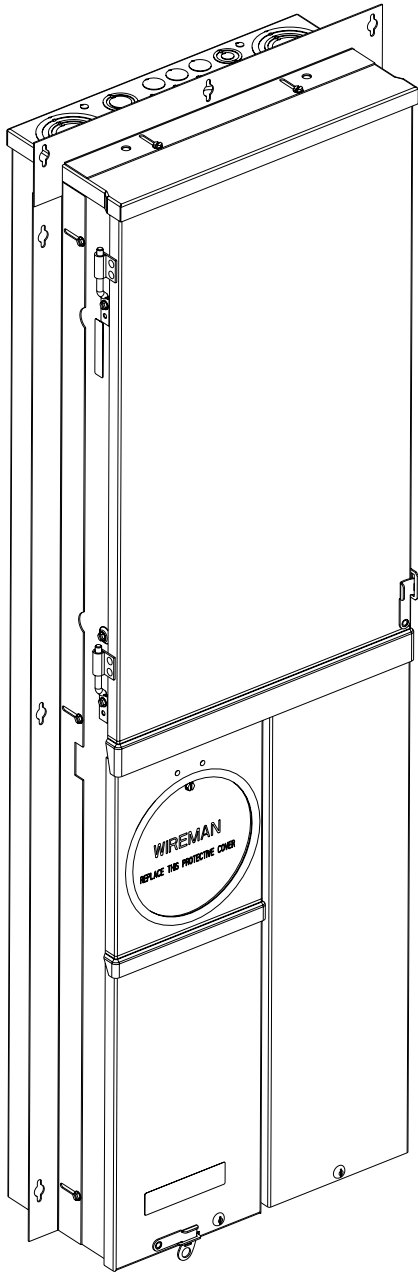
Flush Mount (JA3042B1200FED and JA3042B1225FED)

FEATURES

- UL Listed only for use as service entrance equipment
- NEMA Type 3R enclosure with painted, G90 galvanized steel
- 22,000A IC rating
- Underground feed only
- Ring style meter cover
- Tin plated copper bus bars
- 7" deep can
- Steel breaker mounting base pan
- INSTA-WIRE neutrals and grounds
- Visible neutrals and grounds
- Side-hinged load center door; requires the removal of only one screw to remove door
- Semi-flush mounting
- Adjustable flush rails for 2x4 or 2x6 installations
- Key hole shaped mounting holes for easy hanging
- Deadfront pull ring
- Captive deadfront screw
- See wiring diagram for lug sizes and torque data

ACCESSORIES

- Bottom end wall has type HC hub provisions:
 - EHC200 (2")
 - EHC250 (2-1/2")
 - EHC300 (3")
- Ground bar kits:
 - ECGB5, ECGB10, ECGB14
 - (check wiring diagram for limitations)
- 2/0 - #4 wire range Lug Kit: ECLK2
- 5th Jaw Assembly: EMC5J
- Mechanical Breaker Interlock: ECQML12
- Meter Socket Jumper: ECJS
- Filler Plate: QF3 or ECQF3



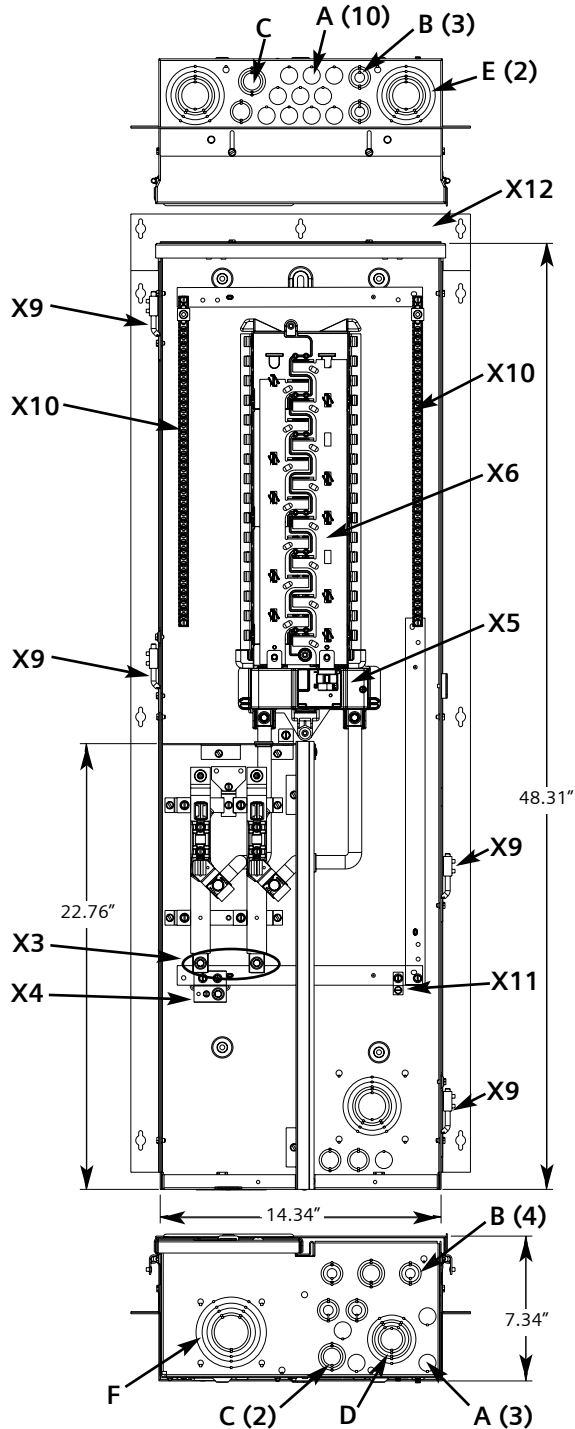
| Main Ampere Rating | Catalog Number | No. of Circuits | No. of Spaces |
|--------------------|----------------|-----------------|---------------|
| 200 | JA3042B1200FED | 30 | 42 |
| 225 | JA3042B1225FED | 30 | 42 |

fastfax

MURRAY

EUSERC Meter/Load Center Combinations

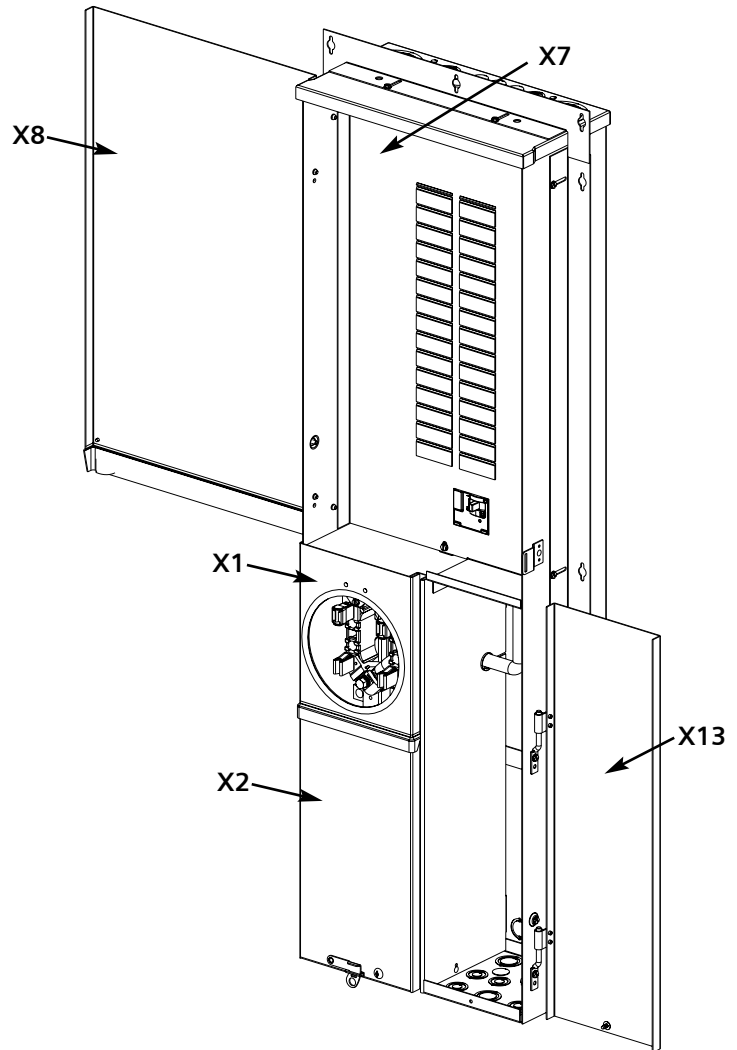
Dimensions, Knockout Diagrams, Replacement Parts



HC Hub Pattern

Knockout Schedule

- A = 1/2"
- B = 1/2", 3/4"
- C = 1/2", 3/4", 1"
- D = 3/4", 1", 1-1/4", 1-1/2", 2"
- E = 1", 1-1/4", 1-1/2", 2", 2-1/2"
- F = 1-1/4", 1-1/2", 2", 2-1/2", 3"
- G = 0.31" diameter Ground Wire K.O.



Replacement Parts

Replacement Parts are to be ordered as an "ITESA2 Special" using the descriptions following the X reference below:

| X Reference | Description | Part No. |
|-------------|------------------------------|------------------|
| X1 | Meter Cover | 5459646 |
| X2 | Pull Section Cover and Latch | 5459648 |
| X3 | Line Phase Lugs | 6519920 |
| X4 | Utility Neutral Lug | 6529980 |
| X5 | Main Breaker | MBK200M |
| X6 | Load Center Interior | 8019941 |
| X7 | Deadfront | 5329572 |
| X8 | Load Center Door | 5459644 |
| X9 | Door Hinge Pin | 5819903, 5819904 |
| X10 | Neutral Bar | 8029147 |
| X11 | Load Center Ground Lug | 36503 |
| X12 | Flush Rails | 5619942, 5619943 |
| X13 | Load Pull Section Door | 5459647 |

Murray Electrical Products
Siemens Energy & Automation, Inc.
3333 Old Milton Parkway
Alpharetta, GA 30005

1-800-964-4114
www.murrayconnect.com

©2005 Siemens Energy & Automation, Inc. All Rights Reserved. Siemens is a registered trademark of Siemens AG. Murray is a registered trademark of Siemens Energy & Automation, Inc. Product names mentioned may be trademarks or registered trademarks of their respective companies. Specifications are subject to change without notice.