

SIEMENS

Indoor Load Center

Catalog Number

E0204ML1125SCU
E0204ML1125FCU

Series

Enclosure
Type 1

Ratings:

125 Amps. Max.
120/240 Volts AC 1 Phase 3 Wire
208Y/120 Volts AC 1 Phase 3 Wire
*240 Volts AC 1 Phase 3 Wire
*Use circuit breakers rated 240 Volts only.

Accessories:

Filler Plate - Cat. No. QF-3

Ground Bars:

Catalog No.

GB5

Taps

5

Suitable For Use As Service Equipment

When used as Service Equipment, apply "Service Disconnect" label on trim near breaker handle.

Terminals:

Use Copper or Aluminum Wire

For all panel terminals and on circuit breaker terminals when breakers are so marked.

Line Terminals A and B

Suitable for 60°/75° C Conductors.

Wire Size #4-2/0 AWG CU/AL.

Torque terminals to 45 Lb-in.

Load Terminals A and B

See markings on breaker for torque requirements and conductor rating.

Line/Load Terminal N

Suitable for 60°/75° C Conductors.

Wire Size #14-2/0 AWG CU/AL.

Torque terminals to 45 Lb-in.

Terminal N1

Suitable for 60°/75° C Conductors.

Wire Size #14-2/0 AWG CU/AL.

Torque terminal to 45 Lb-in.

Ground/Neutral Terminals:

Wire Size	Tightening Torque
14-10 AWG CU	20 Lb-in.
12-10 AWG AL	20 Lb-in.
8 AWG CU/AL	25 Lb-in.
6 AWG CU/AL	35 Lb-in.
4 AWG CU/AL	45 Lb-in.

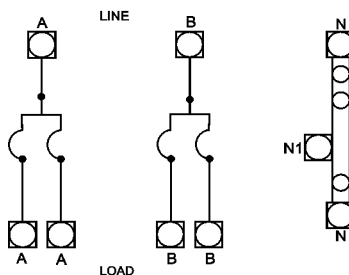
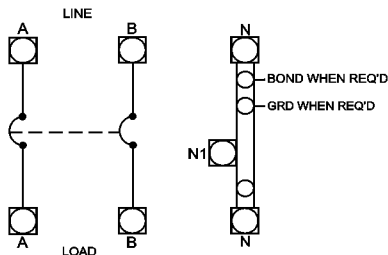
Equipment Ground Bars are suitable for the following wire combinations: (2) or (3) #14-10 AWG. Torque to 20 Lb-in.

Short Circuit Current Rating

The maximum short circuit current rating of this device is 22,000 RMS symmetrical amperes, 120/240 volts AC. The actual rating is limited to the lowest interrupting rating of any breaker installed. Use only Siemens type QP, QT, QPF, QPH, and QPHF circuit breakers. Replacement circuit breakers must be of the same type and interrupting ratings.

General:

Remove twistouts from trim only where breakers will be installed. All openings must be filled with breakers or filler plates. Circuit breaker overload trip position is indicated by handle position midway between ON and OFF. To reset, move handle to OFF position, then turn ON.



Siemens Energy & Automation, Inc.
Alpharetta, Georgia, U.S.A.



4095752 Rev. C

Important

This equipment has been designed for use only with Siemens type circuit breakers listed above. Use of other circuit breakers in this equipment will void the warranty.

Do not spray or allow any petroleum based chemicals, solvents or paint to contact interior components.

Date of Manufacture: 01/26/05

Assembled in Mexico