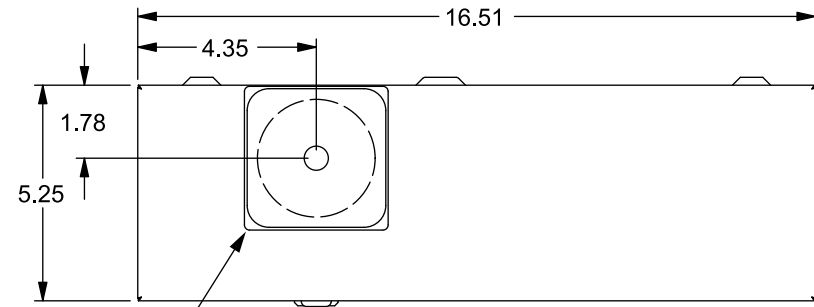


Catalog Number: MM0202B1200RJB

Features and Ratings

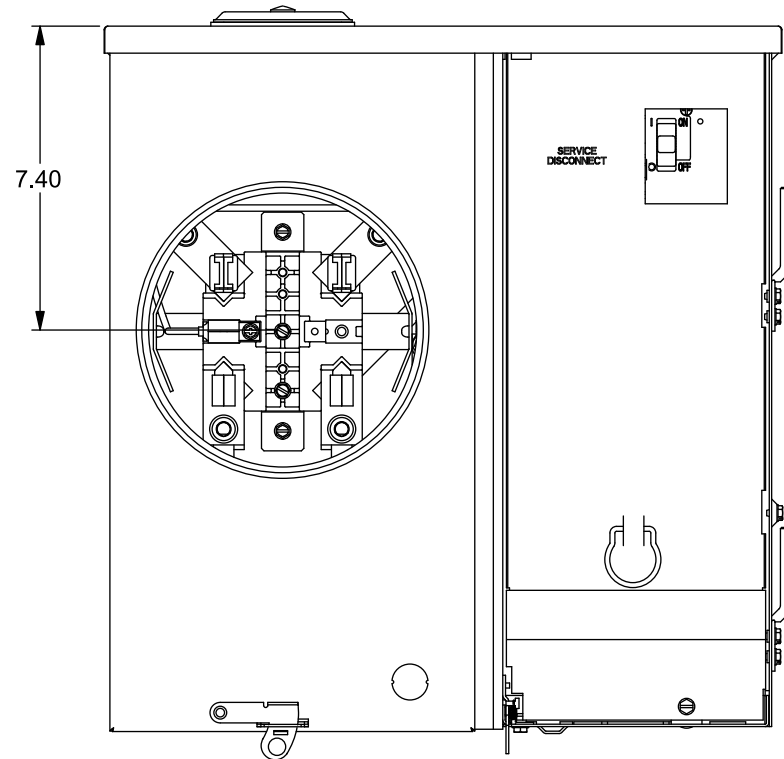


- Ringless Type Meter Cover
- 1 Phase, 3 Wire, 120/240V AC Max.
- 200A Main Breaker Factory Installed
- 200A Continuous Meter Socket Rating
- 5th Jaw Installed at 9 o'Clock
- 22,000 AIC Max. Rated (See Wiring Diagram for Details)
- Overhead or Underground Service Entrance
- RX Type Hub Provision on Top End Wall
- HC Type Hub Provision on Bottom End Wall
- Horn Bypass
- 7/8" Barrel Lock Provision

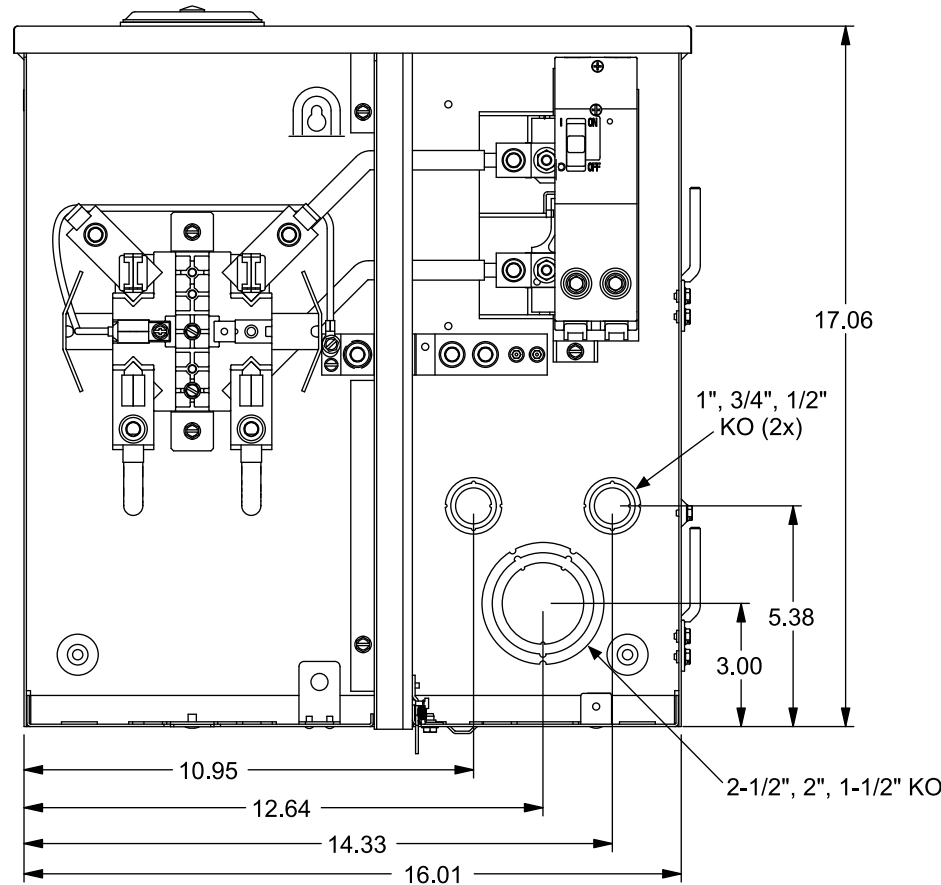


TYPE RX HUB OPENING
COVER PLATE INSTALLED

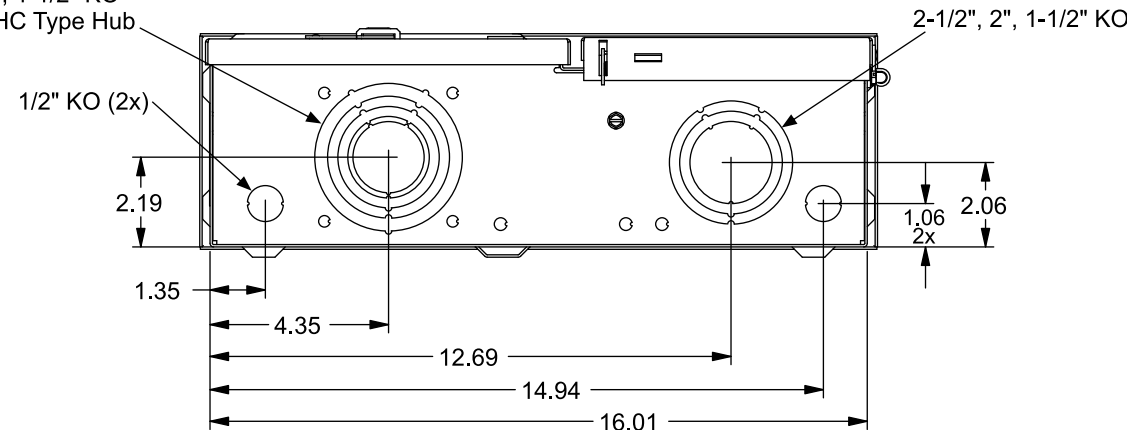
View Shown with Doors,
Deadfront, and Shields Removed



View Shown with Door Removed



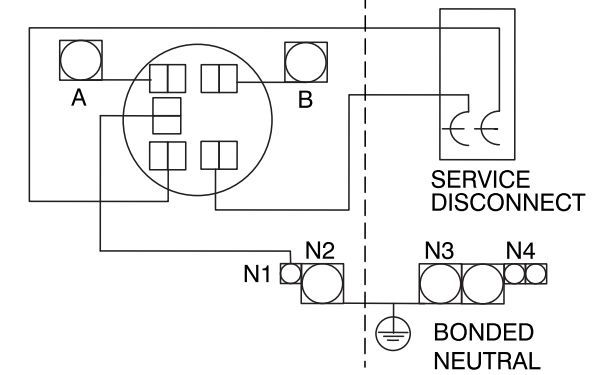
3", 2-1/2", 2", 1-1/2" KO
Provision for HC Type Hub



Accessories

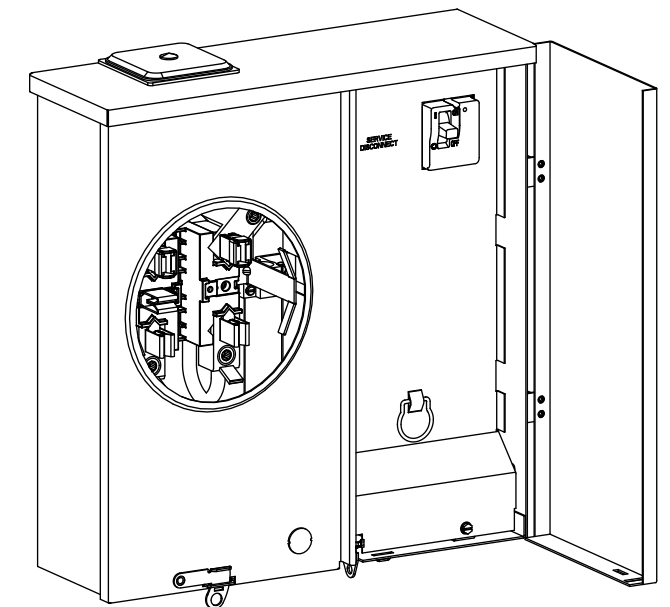
| Trade size (in) | Catalog number |
|-------------------------------------|----------------|
| <i>RX Type Hub (top endwall)</i> | |
| 1 1/4" | EC38597 |
| 1 1/2" | EC38598 |
| 2" | EC38599 |
| 2 1/2" | EC38600 |
| RX Cover Plate | EC38595 |
| <i>HC Type Hub (bottom endwall)</i> | |
| 2" | ECHC200 |
| 2 1/2" | ECHC250 |
| 3" | ECHC300 |

Schematic, Torques & Wire Sizes



| Terminal | Wire Size | Torque |
|----------|----------------|-----------|
| A, B | 250 kcmil - #6 | 275 lb in |
| N1 | #2 - #3 | 50 lb in |
| | #4 - #6 | 45 lb in |
| | #8 | 40 lb in |
| | #10 - #14 | 35 lb in |
| N2 | 250 kcmil - #6 | 275 lb in |
| N3 | 250 kcmil - #4 | 275 lb in |
| N4 | 1/0 - #14 | 120 lb in |

MAIN BREAKER TERMINALS
See markings on breaker for torque requirements and conductor rating.



© 2018 Copyright Siemens Industry, Inc.

SIEMENS
Siemens Industry, Inc.

Meter/Breaker Combination

Description: **200A, Outdoor, OH/UG, Ringless, 5 Jaw, Horn Bypass, 7/8 BL Provision**

NH 5/3/18 Fam A DO NOT SCALE Dwg. No. **MM0202B1200RJB**