

SIEMENS

BD Busway Systems

Selection and Application Guide

The **Rock**
of the
Busway
Industry



Product Family	Catalog Number	Description	Final Buy Availability	Last Day for Buy	Lead Time
BD	BJC3400	BUS PLUG C/B 400A 600V 3P	Yes	6/15/2014	*
BD	BJC44001	BUS PLUG C/B 400A 600V 4P	Yes	6/15/2014	*
BD	BJC44002	BUS PLUG C/B 400A 600V 4P	No	N/A	N/A
BD	BJC4400G1	BUS PLUG C/B 400A 600V 4P GND	No	N/A	N/A
BD	BJC4400G2	BUS PLUG C/B 400A 600V 4P GND	No	N/A	N/A
BD	BLC3600	BUS PLUG C/B 400A 600V 3P	No	N/A	N/A
BD	BLC46001	BUS PLUG C/B 600A 600V 4P	Yes	6/15/2014	*
BD	BLC46002	BUS PLUG C/B 600A 600V 4P	No	N/A	N/A
BD	BLC4600G1	BUS PLUG C/B 600A 600V 4P GND	No	N/A	N/A
BD	BLC4600G2	BUS PLUG C/B 600A 600V 4P GND	No	N/A	N/A
BD	BMC3800	BUS PLUG C/B 800A 600V 3P	Yes	6/15/2014	*
BD	BMC48001	BUS PLUG C/B 800A 600V 4P	No	N/A	N/A
BD	BMC48002	BUS PLUG C/B 800A 600V 4P	No	N/A	N/A
BD	BMC4800G1	BUS PLUG C/B 800A 600V 4P GND	No	N/A	N/A
BD	BMC4800G2	BUS PLUG C/B 800A 600V 4P GND	No	N/A	N/A
BD	BOS14325	BUS PLUG FUSIBLE 400A 240V 3P	Yes	6/15/2014	*
BD	BOS14326	BUS PLUG FUSIBLE 600A 240V 3P	Yes	6/15/2014	*
BD	BOS14356	BUS PLUG FUSIBLE 600A 600V 3P	Yes	6/15/2014	*
BD	BOS14356R	BUS PLUG FUSIBLE 600A 600V 3P	No	N/A	N/A
BD	BOS14357	BUS PLUG FUSIBLE 800A 600V 3P	Yes	6/15/2014	*
BD	BOS164251	BUS PLUG FUSIBLE 400A 240V 4P	No	N/A	N/A
BD	BOS164252	BUS PLUG FUSIBLE 400A 240V 4P	No	N/A	N/A
BD	BOS16425G1	BUS PLUG FUSIBLE 400A 240V 4P GND	No	N/A	N/A
BD	BOS16425G2	BUS PLUG FUSIBLE 400A 240V 4P GND	No	N/A	N/A
BD	BOS164261	BUS PLUG FUSIBLE 600A 240V 4P	No	N/A	N/A
BD	BOS164262	BUS PLUG FUSIBLE 600A 240V 4P	No	N/A	N/A
BD	BOS16426G1	BUS PLUG FUSIBLE 600A 240V 4P GND	No	N/A	N/A
BD	BOS16426G2	BUS PLUG FUSIBLE 600A 240V 4P GND	No	N/A	N/A
BD	BOS164551	BUS PLUG FUSIBLE 400A 600V 4P	Yes	6/15/2014	*
BD	BOS164552	BUS PLUG FUSIBLE 400A 600V 4P	Yes	6/15/2014	*
BD	BOS16455G1	BUS PLUG FUSIBLE 400A 600V 4P GND	No	N/A	N/A
BD	BOS16455G2	BUS PLUG FUSIBLE 400A 600V 4P GND	No	N/A	N/A
BD	BOS164561	BUS PLUG FUSIBLE 600A 600V 4P	Yes	6/15/2014	*
BD	BOS164562	BUS PLUG FUSIBLE 600A 600V 4P	No	N/A	N/A
BD	BOS16456G1	BUS PLUG FUSIBLE 600A 600V 4P GND	No	N/A	N/A
BD	BOS16456G2	BUS PLUG FUSIBLE 600A 600V 4P GND	No	N/A	N/A

* Schedules will be established at order placement and will be within 16 weeks if parts are available. If parts cannot be obtained, some versions will not be available. Date and availability information will be provided at order placement.

SIEMENS

The Industry's Most Complete Line Of Busway Products

Sentron Busway

Our flagship product rated 225A - 5000A. Sentron Busway is so versatile it's used throughout the industrial and commercial construction industry worldwide. Sentron Busway is the only busway to be certified to design standards worldwide (UL, NEMA, IEC, CSA, VDE, BS,) Bulletin BUSA-0592C

XL-U Busway

XL-U Busway set the industry standard for robust durability and performance with welding applications. XL-U Busway is available in ratings from 225A - 6500A. Due to the reputation XL-U Busway has acquired through the years, it is the product of choice throughout the automotive and industrial markets. Bulletin BUSA-5321C

ITD (Trol-E-Duct) Busway

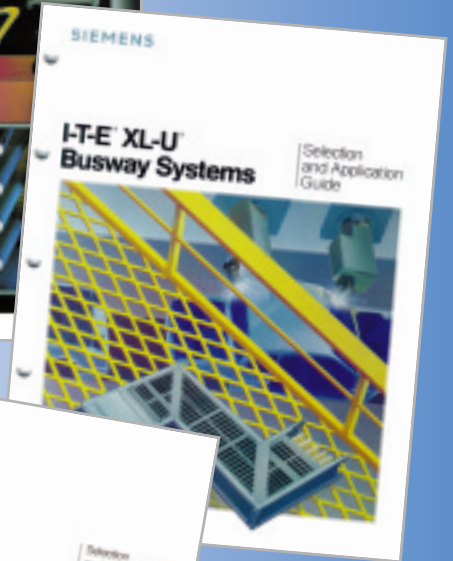
Trol-E-Duct Busway, available in 100A and 225A ratings, provides portable power, feeding power to tools, cranes hoists and a variety of moving loads continually and efficiently. Trol-E-Duct Busway utilizes a channel form that creates an internal raceway for trolley type plug-in units to glide effortlessly along with your power applications. Bulletin BUSA-0521D

BD Busway

BD Busway, rated from 225A to 1600A, has consistently proven to be the industry standard for excellence for over 65 years of service. This standardized and versatile product is used in both the industrial and commercial construction market and is maintained as a stock product to service your quick ship requirements. Bulletin BUSA-5331E

XJ-L Busway

XJ-L Busway, rated 100A and 200A, is known for its outstanding performance serving the industries that utilize microprocessor based technology to manage and control their processes, due to XJ-L's ability to provide an isolated grounding system. Bulletin BUSA-0531E



Technology That Serves The Customer

Distributor And Warehouse Availability



Siemens distributors offer a broad range of distribution and control materials and displays that educate customers about features and benefits of Siemens products. BD Busway, is just one of the many products represented.

In addition to our worldwide presence, Siemens distributors offer a world class variety of products that meet almost all customers distribution, automation and control requirements.

Siemens maintains BD Busway stock, through a warehouse system that can deliver your busway needs within 72 hours of order placement. Ask your local Siemens distributor for details on ordering BD Busway on

your next project and experience the advantage BD Busway provides over traditional cable and conduit. BD Busway can be ordered direct by our distributor, onto our warehouse, through our automated order entry system. That means your order is processed on a same day basis, direct onto the warehouse.

BD Busway is also provided on large projects, where Siemens engineers will provide you, the installer, with complete layout drawings and a step by step installation instruction, to make installing BD Busway effortless.

Siemens distributors throughout the United States carry a full line of standard products that can take care of a majority of your projects.

Many of these distributors can also provide same day availability of:

- **Lighting Panelboards**
- **Busway**
- **Busway Plug-In Units**
- **Power Panelboards**
- **Switchboards**
- **Distribution Transformers**
- **Molded Case Circuit Breakers**
- **Enclosed Switches**
- **Control Products**



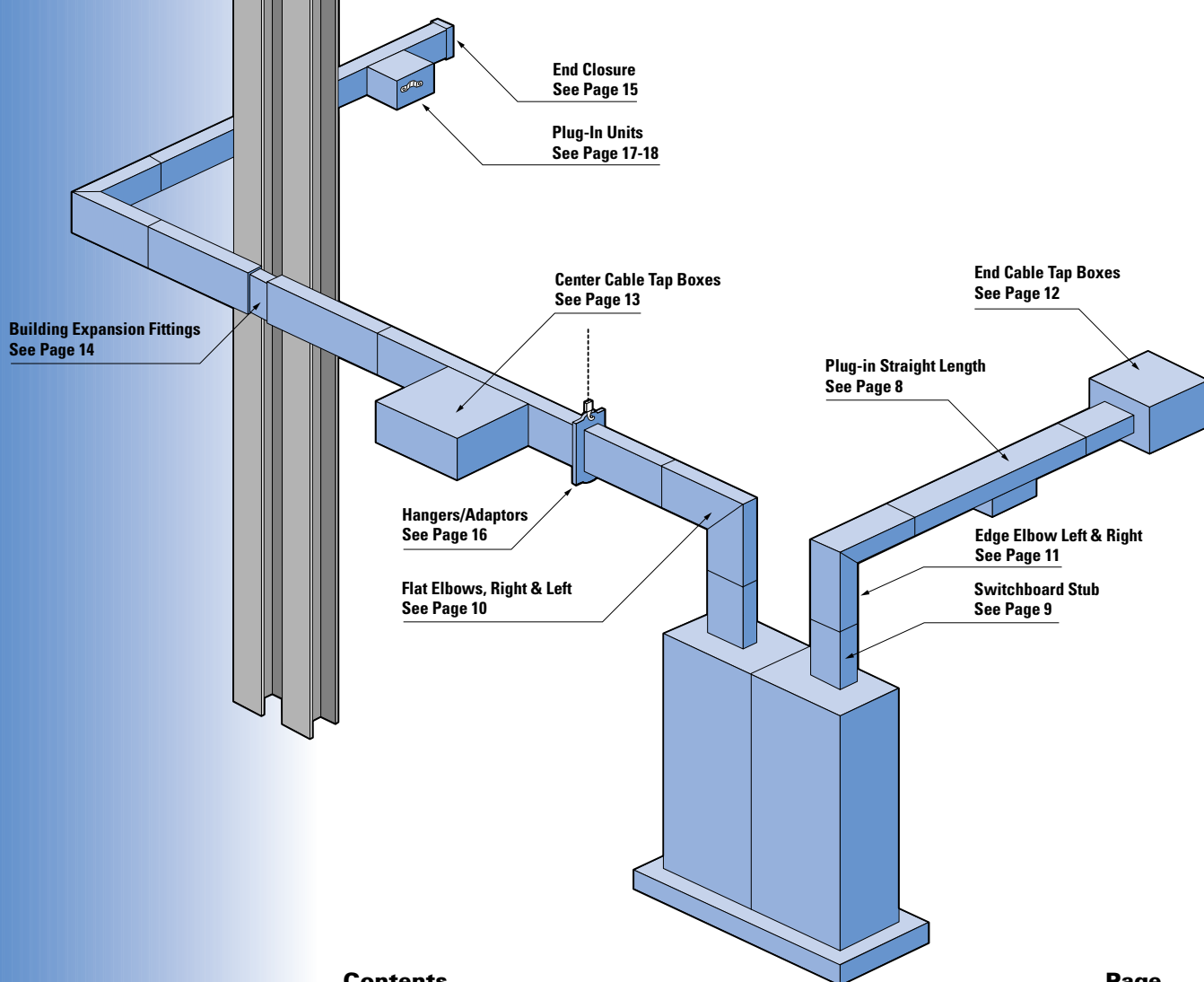
At Siemens Energy & Automation, Inc.,
our commitment to total quality throughout
our company is the hallmark of our business
and our pledge to our customers and employees.
In recognition of this, we are pleased to
participate in

ISO Certification

A handwritten signature in black ink, reading "Thomas J. Malott". The signature is fluid and cursive, with a long horizontal stroke at the end.

Thomas J Malott
President & Chief Executive Officer

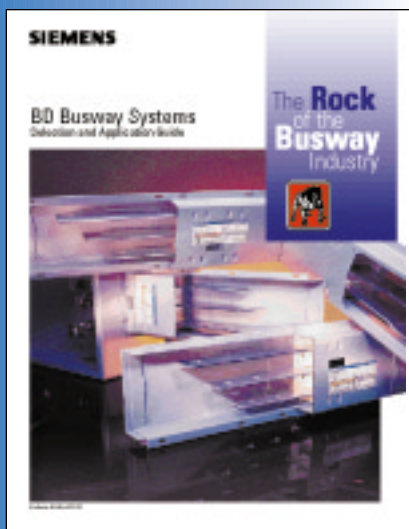




Contents

Page

BD Busway, A matter Of Dedication To It's Heritage And To It's Future	4
BD Busway, "In Stock" Warehouse Program	5
Composite Catalog Numbers	6-7
Straight Lengths, Plug-In	8
Switchboard Stubs	9
Flat Elbows, Right and Left	10
Edge Elbows, Right And Left	11
End Cable Tap Boxes	12
Center Cable Tap Boxes	13
Building Expansion Fittings	14
End Closures	15
Hangers/Adaptors	16
Plug-In Units, Circuit Breaker and Fusible Switch Versions	17-18
BD Busway, Technical Data	19
Ease of Doing Business, Siemens Customer Service	20



BD Busway

A Matter of Dedication To It's Heritage And It's Future

Siemens BD Busway has been the cornerstone in the Busway business for over 65 years.

Introduced in 1932 by Bulldog Electric, BD Busway has a heritage that boasts of thousands of installations still in operation today— 65 years later!

Ease of installation and reliability are the foundations for BD Busway. Through the years, we have maintained this robust design of busway, and will continue to maintain this same design of BD Busway for the future!

It's strength is it's design, which has not changed from when it was introduced to the market, and that's dependability! 65 years later, you can order additional busway that will be 100% compatible with your original installation.

BD Busway is used in all different types of applications, serving the industrial, commercial construction, institutional and automotive markets.

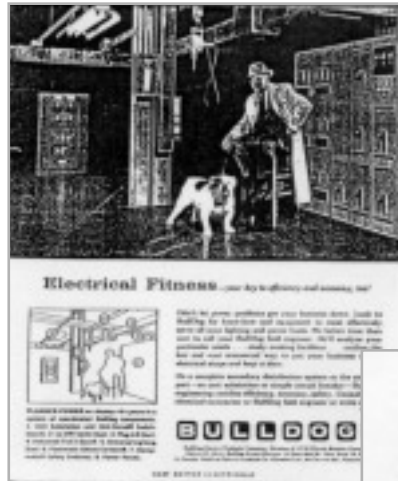
It's air insulated busbar design provides for a rugged level of performance in all applications and has become the standard specification for many Fortune 500 corporations across the United States.

For 65 years, BD Busway has continued to serve the busway industry well and will continue to serve it well into the future.

Standard items of BD Busway are available through our warehouse system and are shipped from stock, to suit your quick ship needs. Just ask your local distributor about BD Busway availability. BD Busway can also be used on major busway installations, where your application is precision engineered to your requirements and shipped according to your construction schedule.

At Siemens Energy & Automation, Inc., we're proud of our heritage in BD Busway and equally proud to continue to offer you the rock of the busway industry, BD Busway!

PRECISION THINKING



BD Busway “In Stock” Warehouse Program

These BD Busway and Plug-In Unit catalog numbers are available through stock. Your Siemens distributor can order 100% of the below catalog numbers using the Siemens automated order entry system. All warehouse shipments leave our warehouse within 24 hours of ordering.



BD Busway Available Through Stock

Amp Rating	Plug-In Straight Lengths 10'-0" Catalog Number (See Page 8)	Edge Right Elbows Catalog Number (See Page 11)	Edge Left Elbows Catalog Number (See Page 11)	End Cable Tap Boxes Catalog Number (See Page 12)	End Closures Catalog Number (See Page 15)	Hangers Catalog Number (See Page 16)
Aluminum 3 Phase - 3 Wire						
225 Amp	ABD302	ALD3022	ALD3024	EBA302	ECP6	BDH10
400 Amp	ABD304	ALD3042	ALD3044	EBA304	ECP6	BDH10
600 Amp	ABD306	ALD3062	ALD3064	EBA306	ECP10	BDH10
800 Amp	ABD308	ALD3082	ALD3084	EBA308	ECP10	BDH10
Copper 3 Phase - 3 Wire						
400 Amp	BDP304	LDP3042	LDP3044	ETB302	ECP6	BDH10
600 Amp	BDP306	LDP3062	LDP3064	ETB304	ECP6	BDH10
800 Amp	BDP308	LDP3082	LDP3084	ETB306	ECP10	BDH10
Copper 3 Phase - 4 Wire, 100% Neutral						
400 Amp	BDP4044	LDP40442	LDP40444	ETB4044	ECP6	BDH10
600 Amp	BDP4064	LDP40642	LDP40644	ETB4064	ECP6	BDH10
800 Amp	BDP4084	LDP40842	LDP40844	ETB4084	ECP10	BDH10

Circuit Breaker Plug-In Units

Amp Rating	3 Phase - 3 Wire Enclosure Only Catalog Number (See Page 17)	3 Phase - 4 Wire Enclosure Only Catalog Number (See Page 17)
100 Amp	BEC3100	BEC4100
250 Amp	BFC3250	BFC4250
400 Amp	BJC3400	BJC4400
600 Amp	BLC3600	BLC4600
800 Amp	BMC3800	BMC4800

Fusible Switch Plug-In Units

Amp Rating	Voltage	3 Phase - 3 Wire Catalog Number (See Page 18)	3 Phase - 4 Wire Catalog Number (See Page 18)
30 Amp	240VAC, 250VDC	BOS14321	BOS16421
60 Amp	240VAC, 250VDC	BOS14322	BOS16422
100 Amp	240VAC, 250VDC	BOS14323	BOS16423
200 Amp	240VAC, 250VDC	BOS14324	BOS16424
400 Amp	240VAC, 250VDC	BOS14325	BOS16425
600 Amp	240VAC, 250VDC	BOS14326	BOS16426
30 Amp	600VAC	BOS14351	BOS16451
60 Amp	600VAC	BOS14352	BOS16452
100 Amp	600VAC	BOS14353	BOS16453
200 Amp	600VAC	BOS14354	BOS16454
400 Amp	600VAC	BOS14355	BOS16455
600 Amp	600VAC	BOS14356	BOS16456

BD Busway Catalog Numbers



BD Busway System Power Distribution From 225A to 1200A, 600V — Aluminum

Amp Rating	Housing Size	Busbar Size	Short Circuit Rating	Plug-In ② Straight Length 10'	Flat Right Elbow	Flat Left Elbow	Edge Right Elbow	Edge Left Elbow	End ③ Cable Tap Box	Center ④ Cable Tap Box	End Closure	Busway Stub	Building Expansion Fitting	Hanger ⑥
				Catalog Number	Catalog Number	Catalog Number	Catalog Number	Catalog Number	Catalog Number	Catalog Number	Catalog Number	Catalog Number	Catalog Number	Catalog Number

Aluminum 3 Phase - 3 Wire

225A	4 1/16 x 8 7/8	(1) 1/4 x 1	10,000	ABD302	ALD3021	ALD3023	ALD3022	ALD3024	EBA302	CBA302	ECP6	FEA302	EPA302	BDH10
400A	4 1/16 x 8 7/8	(1) 1/4 x 2	10,000	ABD304	ALD3041	ALD3043	ALD3042	ALD3044	EBA304	CBA304	ECP6	FEA304	EPA304	BDH10
600A	6 1/16 x 8 7/8	(1) 1/4 x 3	10,000	ABD306	ALD3061	ALD3063	ALD3062	ALD3064	EBA306	CBA306	ECP10	FEA306	EPA306	BDH10
800A	6 1/16 x 8 7/8	(1) 1/4 x 4	10,000	ABD308	ALD3081	ALD3083	ALD3082	ALD3084	EBA308	CBA308	ECP10	FEA308	EPA308	BDH10
1000A	12 1/16 x 8 7/8	(2) 1/4 x 3	10,000	ABD310	ALD3101	ALD3103	ALD3102	ALD3104	EBA310	CBA310	ECA10	FEA310	EPA310	BDH12
1200A	12 1/16 x 8 7/8	(2) 1/4 x 4	10,000	ABD312	ALD3121	ALD3123	ALD3122	ALD3124	EBA312	CBA312	ECA10	FEA312	EPA312	BDH12

Aluminum 3 Phase - 4 Wire, Full Capacity Neutral

225A	4 1/16 x 8 7/8	(1) 1/4 x 1	10,000	ABD4024	ALD40241	ALD40243	ALD40242	ALD40244	EBA4024	CBA4024	ECP6	FEA4024	EPA4024	BDH10
400A	4 1/16 x 8 7/8	(1) 1/4 x 2	10,000	ABD4044	ALD40441	ALD40443	ALD40442	ALD40444	EBA4044	CBA4044	ECP6	FEA4044	EPA4044	BDH10
600A	6 1/16 x 8 7/8	(1) 1/4 x 3	10,000	ABD4064	ALD40641	ALD40643	ALD40642	ALD40644	EBA4064	CBA4064	ECP10	FEA4064	EPA4064	BDH10
800A	6 1/16 x 8 7/8	(1) 1/4 x 4	10,000	ABD4084	ALD40841	ALD40843	ALD40842	ALD40844	EBA4084	CBA4084	ECP10	FEA4084	EPA4084	BDH10
1000A	12 1/16 x 8 7/8	(2) 1/4 x 3	10,000	ABD4104	ALD41041	ALD41043	ALD41042	ALD41044	EBA4104	CBA4104	ECA6	FEA4104	EPA4104	BDH12
1200A	12 1/16 x 8 7/8	(2) 1/4 x 4	10,000	ABD4124	ALD41241	ALD41243	ALD41242	ALD41244	EBA4104	CBA4124	ECA10	FEA4124	EPA4124	BDH12

① For higher short circuit ratings add an "H" after the "D" or "P" (ABDH302 or BDPH302) and add 20% to the list price.

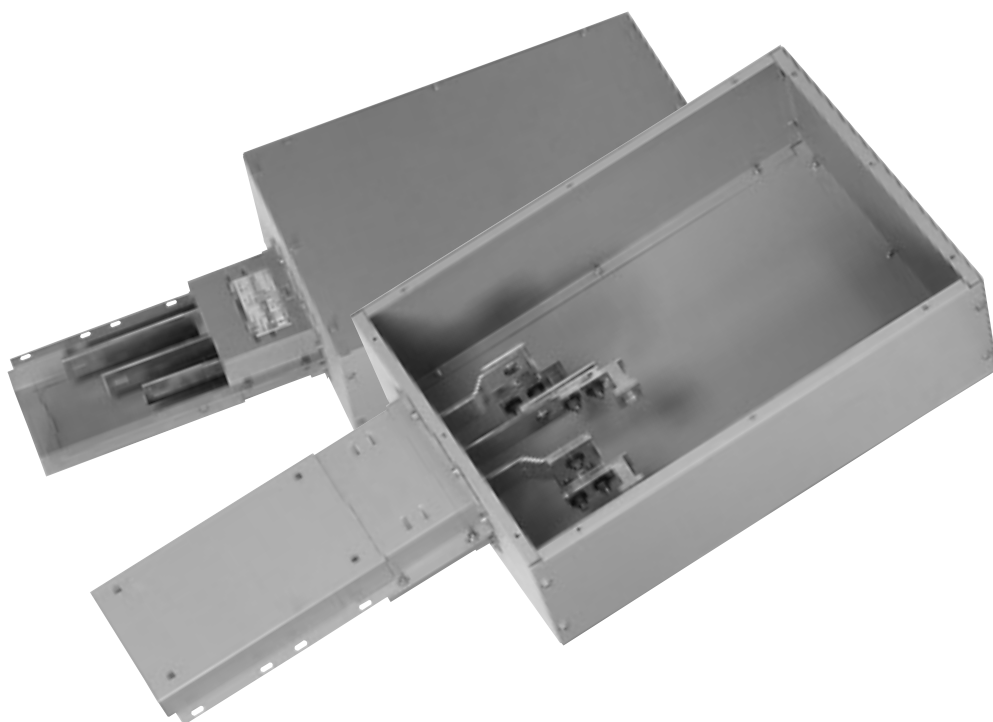
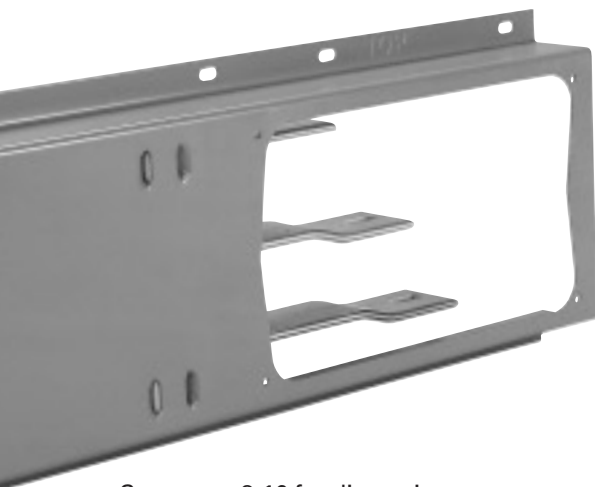
② Consult local sales office for five foot length.

③ Includes busway stub. Total length added to run is 2' for 225A and 400A Aluminum or 225A-600A Copper; 3' for all others. Box is designed to connect to offset bus bar end. When it is to be connected to straight bus bar ends, an adaptor will be furnished upon request.

④ Must be factory-assembled to Busway. Complete device includes 10' Busway.

⑤ Switchboard stub includes flange to cover cutout in top of indoor switchboard and 6" of bus inside switchboard connecting hardware supplied by switchboard manufacturer.

⑥ Two Hangers included free of charge with each Busway Section and Elbow.



See pages 8-16 for dimensions



BD Busway System Power Distribution From 225A to 1600A, 600V — Copper

Amp Rating	Housing Size	Busbar Size	Short Circuit Rating ^①	Plug-In ^① Straight Length 10'	Flat Right Elbow	Flat Left Elbow	Edge Right Elbow	Edge Left Elbow	End ^③ Cable Tap Box	Center ^④ Cable Tap Box	End Closure	Busway ^⑤ Stub	Building Expansion Fitting	Hanger ^⑥
				Catalog Number	Catalog Number	Catalog Number	Catalog Number	Catalog Number	Catalog Number	Catalog Number	Catalog Number	Catalog Number	Catalog Number	Catalog Number

Copper 3 Phase - 3 Wire

225A	4 1/16 x 8 7/8	(1) 3/64 x 2	10,000	BDP302	LDP3021	LDP3023	LDP3022	LDP3024	ETB302	CTB302	ECP6	FEP302	EJP302	BDH10
400A	4 1/16 x 8 7/8	(1) 1/4 x 1 1/2	10,000	BDP304	LDP3041	LDP3043	LDP3042	LDP3044	ETB304	CTB304	ECP6	FEP304	EJP304	BDH10
600A	4 1/16 x 8 7/8	(1) 1/4 x 2	10,000	BDP306	LDP3061	LDP3063	LDP3062	LDP3064	ETB306	CTB306	ECP6	FEP306	EJP306	BDH10
800A	6 1/16 x 8 7/8	(1) 1/4 x 3	10,000	BDP308	LDP3081	LDP3083	LDP3082	LDP3084	ETB308	CTB308	ECP10	FEP308	EJP308	BDH10
1000A	6 1/16 x 8 7/8	(1) 1/4 x 4	10,000	BDP310	LDP3101	LDP3103	LDP3102	LDP3104	ETB310	CTB310	ECP10	FEP310	EJP310	BDH10
1350A	12 1/8 x 8 7/8	(2) 1/4 x 3	10,000	BDP313	LDP3131	LDP3133	LDP3132	LDP3134	ETB313	CTB313	ECP10	FEP313	EJP313	BDH12
1600A	12 1/8 x 8 7/8	(2) 1/4 x 4	10,000	BDP316	LDP3161	LDP3163	LDP3162	LDP3164	ETB316	CTB316	ECP10	FEP316	EJP316	BDH12

Copper 3 Phase - 4 Wire, Full Capacity Neutral

225A	4 1/16 x 8 7/8	(1) 3/64 x 2	10,000	BDP4024	LDP40241	LDP40243	LDP40242	LDP40244	ETB4024	CTB4024	ECP6	FEP4024	EJP4024	BDH10
400A	4 1/16 x 8 7/8	(1) 1/4 x 1 1/2	10,000	BDP4044	LDP40441	LDP40443	LDP40442	LDP40444	ETB4044	CTB4044	ECP6	FEP4044	EJP4044	BDH10
600A	4 1/16 x 8 7/8	(1) 1/4 x 2	10,000	BDP4064	LDP40641	LDP40643	LDP40642	LDP40644	ETB4064	CTB4064	ECP6	FEP4064	EJP4064	BDH10
800A	6 1/16 x 8 7/8	(1) 1/4 x 3	10,000	BDP4084	LDP40841	LDP40843	LDP40842	LDP40844	ETB4084	CTB4084	ECP10	FEP4084	EJP4084	BDH10
1000A	6 1/16 x 8 7/8	(2) 1/4 x 4	10,000	BDP4104	LDP41041	LDP41043	LDP41042	LDP41044	ETB4104	CTB4104	ECA10	FEP4104	EJP4104	BDH10
1350A	12 1/8 x 8 7/8	(2) 1/4 x 3	10,000	BDP4134	LDP41341	LDP41343	LDP41342	LDP41344	ETB4134	CTB4134	ECA10	FEP4134	EJP4134	BDH12
1600A	12 1/8 x 8 7/8	(2) 1/4 x 4	10,000	BDP4164	LDP41641	LDP41643	LDP41642	LDP41644	ETB4164	CTB4164	ECP10	FEP4164	EJP4164	BDH12

① For higher short circuit ratings add an "H" after the "D" or "P" (ABDH302 or BDPH302) and add 20% to the list price.

② Consult local sales office for five foot length.

③ Includes busway stub. Total length added to run is 2' for 225A and 400A Aluminum or 225A-600A Copper; 3' for all others. Box is designed to connect to offset bus bar end. When it is to be connected to straight bus bar ends, an adaptor will be furnished upon request.

④ Must be factory-assembled to Busway. Complete device includes 10' Busway.

⑤ Switchboard stub includes flange to cover cutout in top of indoor switchboard and 6" of bus inside switchboard connecting hardware supplied by switchboard manufacturer.

⑥ Two Hangers included free of charge with each Busway Section and Elbow.



See pages 8-16 for dimensions

Plug-In Straight Lengths

Ordering Information

Amp Rating	Catalog Number	Housing Size	Standard Length
Aluminum 3 Phase - 3 Wire			
225A	ABD302	4 $\frac{1}{16}$ x 8 $\frac{7}{8}$	10'-0"
400A	ABD304	4 $\frac{1}{16}$ x 8 $\frac{7}{8}$	10'-0"
600A	ABD306	6 $\frac{1}{16}$ x 8 $\frac{7}{8}$	10'-0"
800A	ABD308	6 $\frac{1}{16}$ x 8 $\frac{7}{8}$	10'-0"
1000A	ABD310	12 $\frac{1}{8}$ x 8 $\frac{7}{8}$	10'-0"
1200A	ABD312	12 $\frac{1}{8}$ x 8 $\frac{7}{8}$	10'-0"

Aluminum 3 Phase - 4 Wire, 100% Neutral

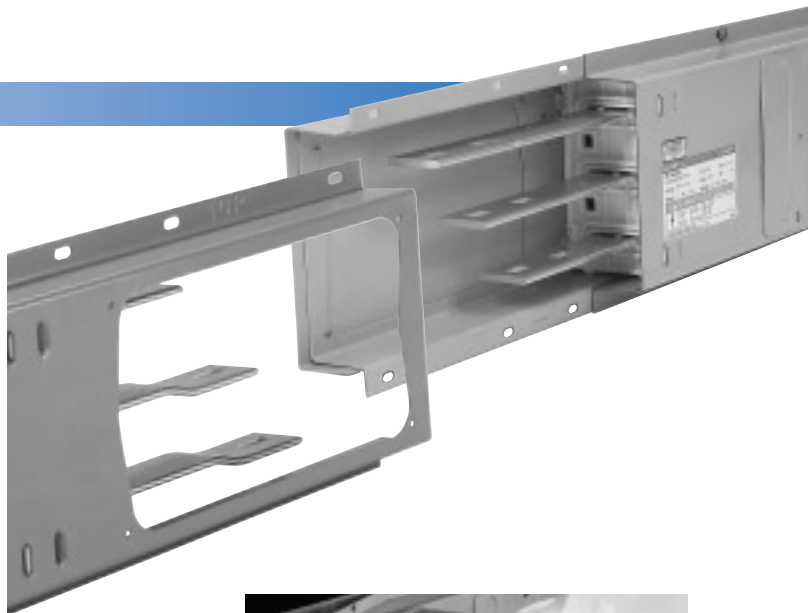
225A	ABD4024	4 $\frac{1}{16}$ x 8 $\frac{7}{8}$	10'-0"
400A	ABD4044	4 $\frac{1}{16}$ x 8 $\frac{7}{8}$	10'-0"
600A	ABD4064	6 $\frac{1}{16}$ x 8 $\frac{7}{8}$	10'-0"
800A	ABD4084	8 $\frac{1}{8}$ x 8 $\frac{7}{8}$	10'-0"
1000A	ABD4104	12 $\frac{1}{8}$ x 8 $\frac{7}{8}$	10'-0"
1200A	ABD4124	12 $\frac{1}{8}$ x 8 $\frac{7}{8}$	10'-0"

Copper 3 Phase - 3 Wire

225A	BDP302	4 $\frac{1}{16}$ x 8 $\frac{7}{8}$	10'-0"
400A	BDP304	4 $\frac{1}{16}$ x 8 $\frac{7}{8}$	10'-0"
600A	BDP306	4 $\frac{1}{16}$ x 8 $\frac{7}{8}$	10'-0"
800A	BDP308	6 $\frac{1}{16}$ x 8 $\frac{7}{8}$	10'-0"
1000A	BDP310	6 $\frac{1}{16}$ x 8 $\frac{7}{8}$	10'-0"
1350A	BDP316	12 $\frac{1}{8}$ x 8 $\frac{7}{8}$	10'-0"
1600A	BDP316	12 $\frac{1}{8}$ x 8 $\frac{7}{8}$	10'-0"

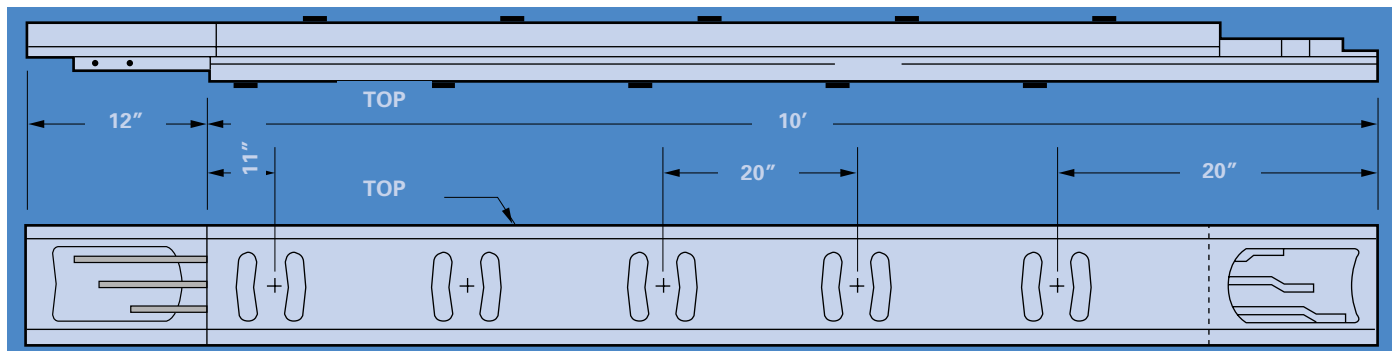
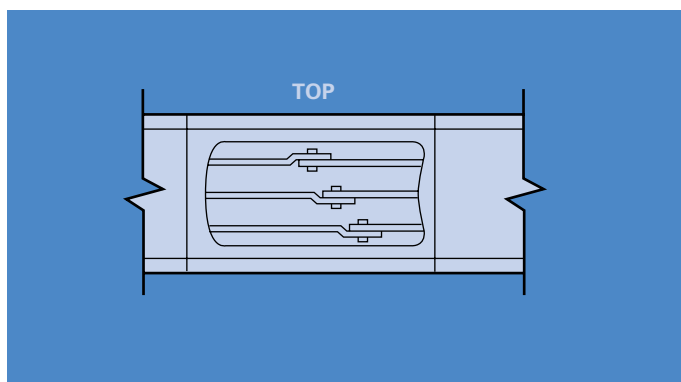
Copper 3 Phase - 4 Wire, 100% Neutral

225A	BDP4024	4 $\frac{1}{16}$ x 8 $\frac{7}{8}$	10'-0"
400A	BDP4044	4 $\frac{1}{16}$ x 8 $\frac{7}{8}$	10'-0"
600A	BDP4064	4 $\frac{1}{16}$ x 8 $\frac{7}{8}$	10'-0"
800A	BDP4084	8 $\frac{1}{8}$ x 8 $\frac{7}{8}$	10'-0"
1000A	BDP4104	8 $\frac{1}{8}$ x 8 $\frac{7}{8}$	10'-0"



Plug Capacity

Each 10 foot standard straight section has ten (five each side) plug-in opening with which to meet your branch circuit power needs. Since they are spaced alternately along two sides of the busway, all may be used simultaneously. System flexibility is built-in since today's molded case circuit breakers and fusible Vacu-Break® plugs are as compatible with yesterday's BD Busway as they will be with tomorrow's.



Switchboard Stubs

Ordering Information ^①

Amp Rating	Catalog Number	Housing Size	Busbar Size	Standard Length
Aluminum 3 Phase - 3 Wire				
225A	FEA302	4 ¹ / ₁₆ x 8 ⁷ / ₈	(1) 1/4 x 1	6"
400A	FEA304	4 ¹ / ₁₆ x 8 ⁷ / ₈	(1) 1/4 x 2	6"
600A	FEA306	6 ¹ / ₁₆ x 8 ⁷ / ₈	(1) 1/4 x 3	6"
800A	FEA308	6 ¹ / ₁₆ x 8 ⁷ / ₈	(1) 1/4 x 4	6"
1000A	FEA310	12 ¹ / ₈ x 8 ⁷ / ₈	(2) 1/4 x 3	6"
1200A	FEA312	12 ¹ / ₈ x 8 ⁷ / ₈	(2) 1/4 x 4	6"
Aluminum 3 Phase - 4 Wire, 100% Neutral				
225A	FEA4024	4 ¹ / ₁₆ x 8 ⁷ / ₈	(1) 1/4 x 1	6"
400A	FEA4044	4 ¹ / ₁₆ x 8 ⁷ / ₈	(1) 1/4 x 2	6"
600A	FEA4064	6 ¹ / ₁₆ x 8 ⁷ / ₈	(1) 1/4 x 3	6"
800A	FEA4084	8 ¹ / ₈ x 8 ⁷ / ₈	(1) 1/4 x 4	6"
1000A	FEA4104	12 ¹ / ₈ x 8 ⁷ / ₈	(2) 1/4 x 3	6"
1200A	FEA4124	12 ¹ / ₈ x 8 ⁷ / ₈	(2) 1/4 x 4	6"
Copper 3 Phase - 3 Wire				
225A	FEP302	4 ¹ / ₁₆ x 8 ⁷ / ₈	(1) 3/64 x 2	6"
400A	FEP304	4 ¹ / ₁₆ x 8 ⁷ / ₈	(1) 1/4 x 1 ¹ / ₂	6"
600A	FEP306	4 ¹ / ₁₆ x 8 ⁷ / ₈	(1) 1/4 x 2	6"
800A	FEP308	6 ¹ / ₁₆ x 8 ⁷ / ₈	(1) 1/4 x 3	6"
1000A	FEP310	6 ¹ / ₁₆ x 8 ⁷ / ₈	(1) 1/4 x 4	6"
1350A	FEP313	12 ¹ / ₈ x 8 ⁷ / ₈	(2) 1/4 x 3	6"
1600A	FEP316	12 ¹ / ₈ x 8 ⁷ / ₈	(2) 1/4 x 4	6"
Copper 3 Phase - 4 Wire, 100% Neutral				
225A	FEP4024	4 ¹ / ₁₆ x 8 ⁷ / ₈	(1) 3/64 x 2	6"
400A	FEP4044	4 ¹ / ₁₆ x 8 ⁷ / ₈	(1) 1/4 x 1 ¹ / ₂	6"
600A	FEP4064	4 ¹ / ₁₆ x 8 ⁷ / ₈	(1) 1/4 x 2	6"
800A	FEP4084	8 ¹ / ₈ x 8 ⁷ / ₈	(1) 1/4 x 3	6"
1000A	FEP4104	8 ¹ / ₈ x 8 ⁷ / ₈	(1) 1/4 x 4	6"

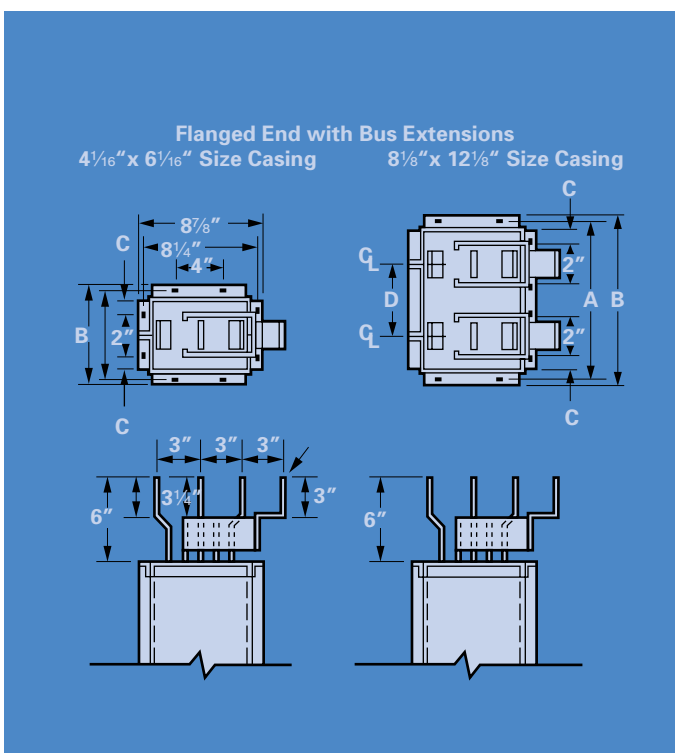
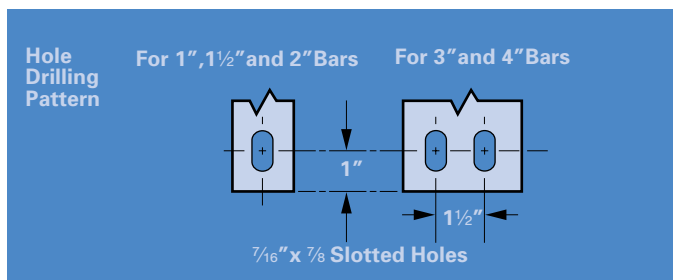
① Switchboard stub includes flange to cover cutout in top of indoor switchboard and 6" of bus inside switchboard. Connecting hardware supplied by switchboard manufacturer.



BD Switchboard Stubs are used to connect BD Plug-in Busway to switchboards. The switchboards are typically Siemens Sentron Switchboards, but also are adaptable to switchboards produced by manufacturers other than Siemens.

BD Switchboard Stubs are furnished with busbar extensions to facilitate in making a connection to the switchboard busbars.

Casing Size	A	B	C	D
Dimensions In Inches				
4 ¹ / ₁₆	5 ¹³ / ₁₆	5 ⁵ / ₁₆	1 ¹ / ₃₂	—
6 ¹ / ₁₆	7 ¹³ / ₁₆	7 ³ / ₁₆	2 ¹ / ₃₂	—
8 ¹ / ₈	9 ⁷ / ₈	9 ¹ / ₄	1 ¹ / ₃₂	4 ¹ / ₁₆
12 ¹ / ₈	13 ⁷ / ₈	13 ¹ / ₄	2 ¹ / ₃₂	6 ¹ / ₁₆



Flat Elbows

Ordering Information ①

Amp Rating	Flat Right Catalog #	Flat Left ② Catalog #	Housing Size
Aluminum 3 Phase - 3 Wire			
225A	ABD3021	ABD3023	4 $\frac{1}{16}$ x 8 $\frac{7}{8}$
400A	ABD3041	ABD3043	4 $\frac{1}{16}$ x 8 $\frac{7}{8}$
600A	ABD3061	ABD3063	6 $\frac{1}{16}$ x 8 $\frac{7}{8}$
800A	ABD3081	ABD3083	6 $\frac{1}{16}$ x 8 $\frac{7}{8}$
1000A	ABD3101	ABD3103	12 $\frac{1}{8}$ x 8 $\frac{7}{8}$
1200A	ABD3121	ABD3123	12 $\frac{1}{8}$ x 8 $\frac{7}{8}$

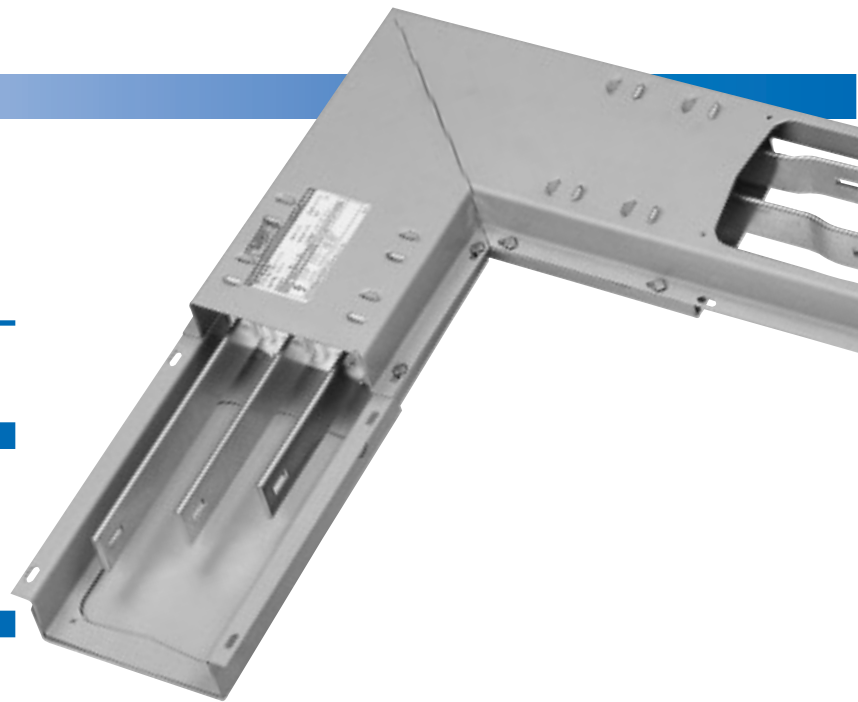
Aluminum 3 Phase - 4 Wire, 100% Neutral			
225A	ABD40241	ABD40243	4 $\frac{1}{16}$ x 8 $\frac{7}{8}$
400A	ABD40441	ABD40443	4 $\frac{1}{16}$ x 8 $\frac{7}{8}$
600A	ABD40641	ABD40643	6 $\frac{1}{16}$ x 8 $\frac{7}{8}$
800A	ABD40841	ABD40843	8 $\frac{1}{8}$ x 8 $\frac{7}{8}$
1000A	ABD41041	ABD41043	12 $\frac{1}{8}$ x 8 $\frac{7}{8}$
1200A	ABD41241	ABD41243	12 $\frac{1}{8}$ x 8 $\frac{7}{8}$

Copper 3 Phase - 3 Wire			
225A	BDP3021	BDP3023	4 $\frac{1}{16}$ x 8 $\frac{7}{8}$
400A	BDP3041	BDP3043	4 $\frac{1}{16}$ x 8 $\frac{7}{8}$
600A	BDP3061	BDP3063	4 $\frac{1}{16}$ x 8 $\frac{7}{8}$
800A	BDP3081	BDP3083	6 $\frac{1}{16}$ x 8 $\frac{7}{8}$
1000A	BDP3101	BDP3103	6 $\frac{1}{16}$ x 8 $\frac{7}{8}$
1350A	BDP3131	BDP3133	12 $\frac{1}{8}$ x 8 $\frac{7}{8}$
1600A	BDP3161	BDP3163	12 $\frac{1}{8}$ x 8 $\frac{7}{8}$

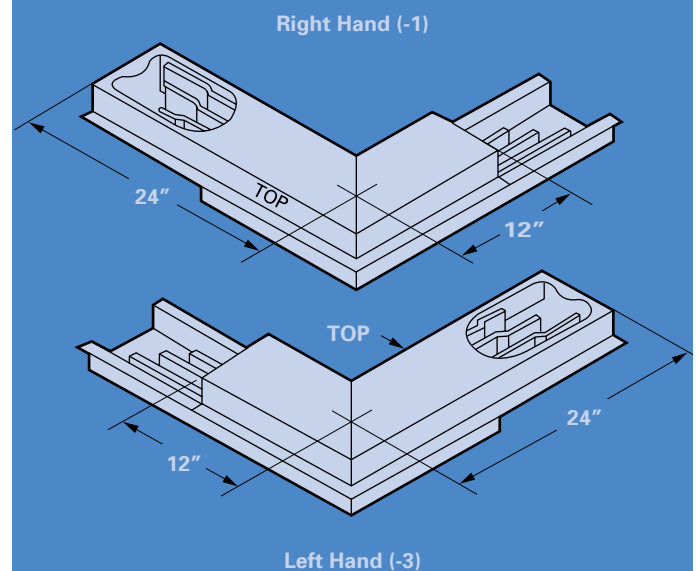
Copper 3 Phase - 4 Wire, 100% Neutral			
225A	BDP40241	BDP40243	4 $\frac{1}{16}$ x 8 $\frac{7}{8}$
400A	BDP40441	BDP40443	4 $\frac{1}{16}$ x 8 $\frac{7}{8}$
600A	BDP40641	BDP40643	4 $\frac{1}{16}$ x 8 $\frac{7}{8}$
800A	BDP40841	BDP40843	8 $\frac{1}{8}$ x 8 $\frac{7}{8}$
1000A	BDP41041	BDP41043	8 $\frac{1}{8}$ x 8 $\frac{7}{8}$

- ① Two Hangers included free of charge with each elbow.
 ② Flat Elbows and Edge Elbows are NOT interchangeable.

Consult local sales office for other fittings.



Flat Elbows



Edge Elbows

Ordering Information ^①

Amp Rating	Edge Right Catalog #	Edge Left ^② Catalog #	Housing Size
------------	----------------------	----------------------------------	--------------

Aluminum 3 Phase - 3 Wire

225A	ABD3022	ABD3024	4 ¹ / ₁₆ x 8 ⁷ / ₈
400A	ABD3042	ABD3044	4 ¹ / ₁₆ x 8 ⁷ / ₈
600A	ABD3062	ABD3064	6 ¹ / ₁₆ x 8 ⁷ / ₈
800A	ABD3082	ABD3084	6 ¹ / ₁₆ x 8 ⁷ / ₈
1000A	ABD3102	ABD3104	12 ¹ / ₈ x 8 ⁷ / ₈
1200A	ABD3122	ABD3124	12 ¹ / ₈ x 8 ⁷ / ₈

Aluminum 3 Phase - 4 Wire, 100% Neutral

225A	ABD40242	ABD40244	4 ¹ / ₁₆ x 8 ⁷ / ₈
400A	ABD4042	ABD4044	4 ¹ / ₁₆ x 8 ⁷ / ₈
600A	ABD40642	ABD40644	6 ¹ / ₁₆ x 8 ⁷ / ₈
800A	ABD40842	ABD40844	8 ¹ / ₈ x 8 ⁷ / ₈
1000A	ABD41042	ABD41044	12 ¹ / ₈ x 8 ⁷ / ₈
1200A	ABD41242	ABD41244	12 ¹ / ₈ x 8 ⁷ / ₈

Copper 3 Phase - 3 Wire

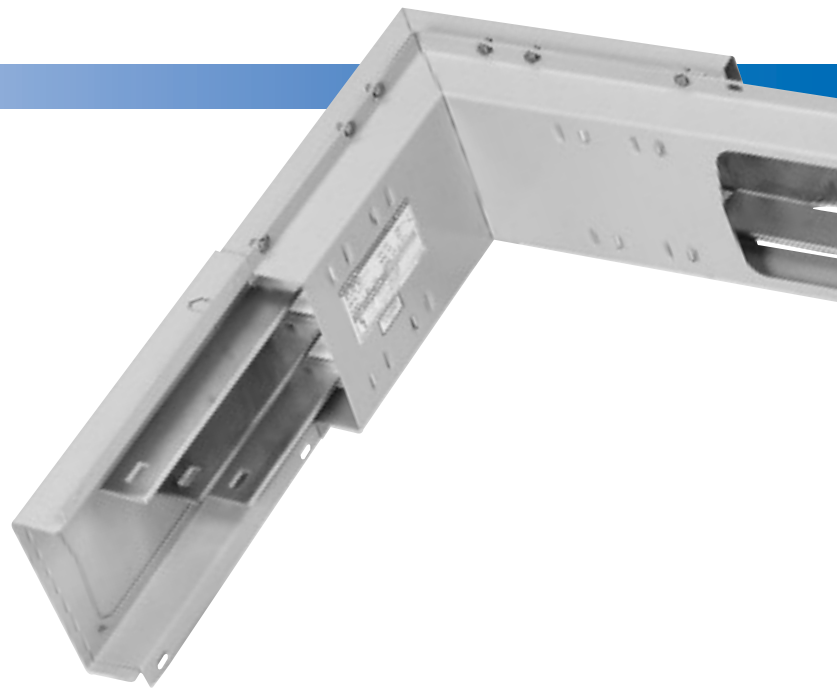
225A	BDP3022	BDP3024	4 ¹ / ₁₆ x 8 ⁷ / ₈
400A	BDP3042	BDP3044	4 ¹ / ₁₆ x 8 ⁷ / ₈
600A	BDP3062	BDP3064	4 ¹ / ₁₆ x 8 ⁷ / ₈
800A	BDP3082	BDP3084	6 ¹ / ₁₆ x 8 ⁷ / ₈
1000A	BDP3102	BDP3104	6 ¹ / ₁₆ x 8 ⁷ / ₈
1350A	BDP3132	BDP3134	12 ¹ / ₈ x 8 ⁷ / ₈
1600A	BDP3162	BDP3164	12 ¹ / ₈ x 8 ⁷ / ₈

Copper 3 Phase - 4 Wire, 100% Neutral

225A	BDP40242	BDP40244	4 ¹ / ₁₆ x 8 ⁷ / ₈
400A	BDP40442	BDP40444	4 ¹ / ₁₆ x 8 ⁷ / ₈
600A	BDP40642	BDP40644	4 ¹ / ₁₆ x 8 ⁷ / ₈
800A	BDP40842	BDP40844	8 ¹ / ₈ x 8 ⁷ / ₈
1000A	BDP41042	BDP41044	8 ¹ / ₈ x 8 ⁷ / ₈

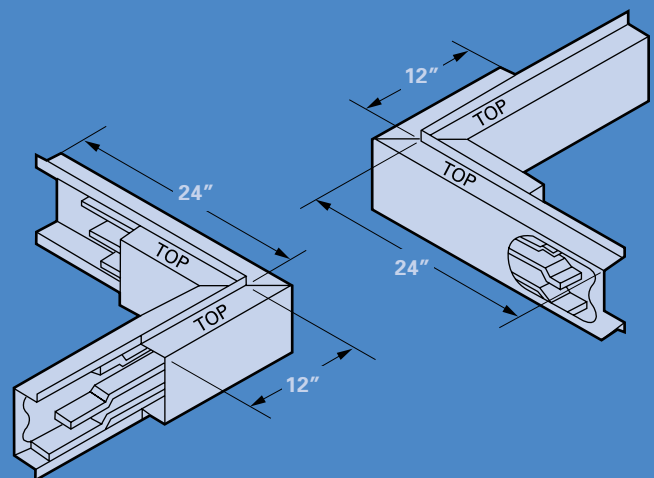
① Two Hangers included free of charge with each elbow.
 ② Flat Elbows and Edge Elbows are NOT interchangeable.

Consult local sales office for other fittings.



Edge Elbows

Right Hand (-2)



Left Hand (-4)

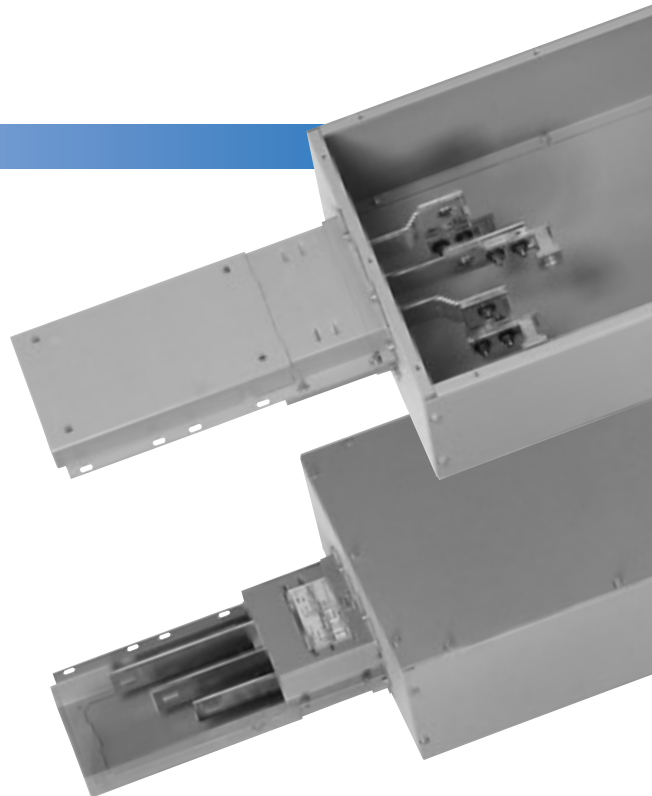
End Cable Tap Boxes

Ordering Information ①

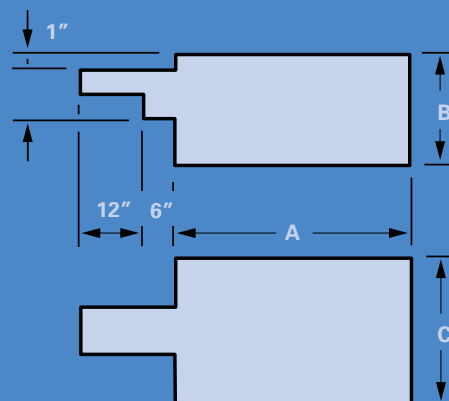
Amp Rating	Catalog Number	Housing Size	Busbar Size	Stub Lgth.	Dimensions "A" "B" "C"			Wire Bend Space	# Cable Lugs Per Phase Wire Size
Aluminum 3 Phase - 3 Wire									
225A	EBA302	4 ¹ / ₁₆ x 8 ⁷ / ₈	(1) ¼ x 1	6"	20½"	7"	16"	12"	(1) #6-350MCM
400A	EBA304	4 ¹ / ₁₆ x 8 ⁷ / ₈	(1) ¼ x 2	6"	26"	8½"	18"	16"	(1) #4-600MCM
600A	EBA306	6 ¹ / ₁₆ x 8 ⁷ / ₈	(1) ¼ x 3	6"	30"	12"	18"	16"	(2) #4-600MCM
800A	EBA308	6 ¹ / ₁₆ x 8 ⁷ / ₈	(1) ¼ x 4	6"	30"	12"	18"	20"	(3) #4-600MCM
1000A	EBA310	12 ¹ / ₈ x 8 ⁷ / ₈	(2) ¼ x 3	6"	30"	18"	18"	20"	(4) #4-600MCM
1200A	EBA312	12 ¹ / ₈ x 8 ⁷ / ₈	(2) ¼ x 4	6"	30"	18"	18"	20"	(4) #4-600MCM
Aluminum 3 Phase - 4 Wire, 100% Neutral									
225A	EBA4024	4 ¹ / ₁₆ x 8 ⁷ / ₈	(1) ¼ x 1	6"	20½"	7"	16"	12"	(1) #6-350MCM
400A	EBA4044	4 ¹ / ₁₆ x 8 ⁷ / ₈	(1) ¼ x 2	6"	26"	8½"	18"	16"	(1) #4-600MCM
600A	EBA4064	6 ¹ / ₁₆ x 8 ⁷ / ₈	(1) ¼ x 3	6"	30"	12"	18"	20"	(2) #4-600MCM
800A	EBA4084	8 ¹ / ₈ x 8 ⁷ / ₈	(1) ¼ x 4	6"	30"	18"	18"	20"	(3) #4-600MCM
1000A	EBA4104	12 ¹ / ₈ x 8 ⁷ / ₈	(2) ¼ x 3	6"	30"	18"	18"	20"	(4) #4-600MCM
1200A	EBA4124	12 ¹ / ₈ x 8 ⁷ / ₈	(2) ¼ x 4	6"	30"	18"	18"	20"	(4) #4-600MCM
Copper 3 Phase - 3 Wire									
225A	ETB302	4 ¹ / ₁₆ x 8 ⁷ / ₈	(1) 3⁄64 x 2	6"	20½"	7"	16"	12"	(1) #6-350MCM
400A	ETB304	4 ¹ / ₁₆ x 8 ⁷ / ₈	(1) ¼ x 1½	6"	26"	8½"	18"	16"	(1) #4-600MCM
600A	ETB306	4 ¹ / ₁₆ x 8 ⁷ / ₈	(1) ¼ x 2	6"	26"	8½"	18"	16"	(2) #4-600MCM
800A	ETB308	6 ¹ / ₁₆ x 8 ⁷ / ₈	(1) ¼ x 3	6"	30"	12"	18"	20"	(3) #4-600MCM
1000A	ETB310	6 ¹ / ₁₆ x 8 ⁷ / ₈	(1) ¼ x 4	6"	30"	12"	18"	20"	(4) #4-600MCM
1350A	ETB313	12 ¹ / ₈ x 8 ⁷ / ₈	(2) ¼ x 3	6"	30"	18"	18"	20"	(4) #4-600MCM
1600A	ETB316	12 ¹ / ₈ x 8 ⁷ / ₈	(2) ¼ x 4	6"	30"	18"	18"	20"	(4) #4-600MCM
Copper 3 Phase - 4 Wire, 100% Neutral									
225A	ETB4024	4 ¹ / ₁₆ x 8 ⁷ / ₈	(1) 3⁄64 x 2	6"	20½"	7"	16"	12"	(1) #6-350MCM
400A	ETB4044	4 ¹ / ₁₆ x 8 ⁷ / ₈	(1) ¼ x 1½	6"	26"	8½"	18"	16"	(1) #4-600MCM
600A	ETB4064	4 ¹ / ₁₆ x 8 ⁷ / ₈	(1) ¼ x 2	6"	26"	8½"	18"	16"	(2) #4-600MCM
800A	ETB4084	8 ¹ / ₈ x 8 ⁷ / ₈	(1) ¼ x 3	6"	30"	18"	18"	20"	(3) #4-600MCM
1000A	ETB4104	8 ¹ / ₈ x 8 ⁷ / ₈	(1) ¼ x 4	6"	30"	18"	18"	20"	(4) #4-600MCM

① Includes busway stub. Total length added to run is 2' for 225A and 400A Aluminum or 225A-600A Copper; 3' for all others. Box is designed to connect to offset bus bar end. When it is to be connected to straight bus bar ends, an adaptor will be furnished upon request.

Consult local sales office for other fittings



End Cable Tap Boxes are used to cable connect incoming service to BD Busway. When mounting busway sections flush against a wall or a flat surface, the busway must be mounted with the offset to the right of the installer. This will permit the end cable tap box to mount flush against the wall. BD Busway end cable tap boxes are provided with robust wire bending space to make pulling cables less labor intensive.



Center Cable Tap Boxes

Ordering Information ^①

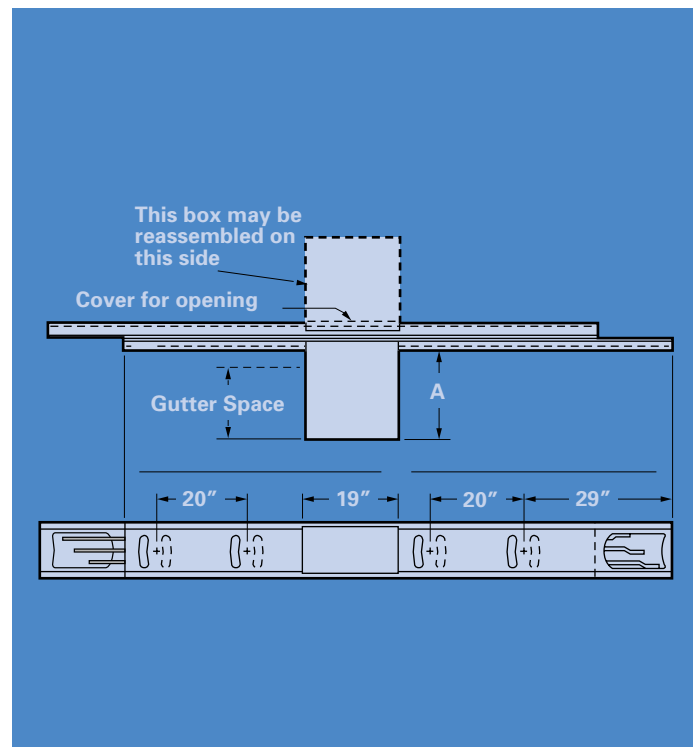
Amp Rating	Catalog Number	Housing Size	Busbar Size	Wire "A" Dim.	Bend Space	# Cable Lugs Per Phase Wire Size
Aluminum 3 Phase - 3 Wire						
225A	CBA302	4 $\frac{1}{16}$ x 8 $\frac{7}{8}$	(1) $\frac{1}{4}$ x 1	18"	15"	(1) #6-350MCM
400A	CBA304	4 $\frac{1}{16}$ x 8 $\frac{7}{8}$	(1) $\frac{1}{4}$ x 2	24"	15"	(1) #4-600MCM
600A	CBA306	6 $\frac{1}{16}$ x 8 $\frac{7}{8}$	(1) $\frac{1}{4}$ x 3	24"	15"	(2) #4-600MCM
800A	CBA308	6 $\frac{1}{16}$ x 8 $\frac{7}{8}$	(1) $\frac{1}{4}$ x 4	24"	15"	(3) #4-600MCM
1000A	CBA310	12 $\frac{1}{8}$ x 8 $\frac{7}{8}$	(2) $\frac{1}{4}$ x 3	24"	15"	(4) #4-600MCM
1200A	CBA312	12 $\frac{1}{8}$ x 8 $\frac{7}{8}$	(2) $\frac{1}{4}$ x 4	24"	15"	(4) #4-600MCM
Aluminum 3 Phase - 4 Wire, 100% Neutral						
225A	CBA4024	4 $\frac{1}{16}$ x 8 $\frac{7}{8}$	(1) $\frac{1}{4}$ x 1	18"	15"	(1) #6-350MCM
400A	CBA4044	4 $\frac{1}{16}$ x 8 $\frac{7}{8}$	(1) $\frac{1}{4}$ x 2	24"	15"	(1) #4-600MCM
600A	CBA4064	6 $\frac{1}{16}$ x 8 $\frac{7}{8}$	(1) $\frac{1}{4}$ x 3	24"	15"	(2) #4-600MCM
800A	CBA4084	8 $\frac{1}{8}$ x 8 $\frac{7}{8}$	(1) $\frac{1}{4}$ x 4	24"	15"	(3) #4-600MCM
1000A	CBA4104	12 $\frac{1}{8}$ x 8 $\frac{7}{8}$	(2) $\frac{1}{4}$ x 3	24"	15"	(4) #4-600MCM
1200A	CBA4124	12 $\frac{1}{8}$ x 8 $\frac{7}{8}$	(2) $\frac{1}{4}$ x 4	24"	15"	(4) #4-600MCM
Copper 3 Phase - 3 Wire						
225A	CTB302	4 $\frac{1}{16}$ x 8 $\frac{7}{8}$	(1) $\frac{3}{64}$ x 2	18"	15"	(1) #6-350MCM
400A	CTB304	4 $\frac{1}{16}$ x 8 $\frac{7}{8}$	(1) $\frac{1}{4}$ x 1 $\frac{1}{2}$	24"	15"	(1) #4-600MCM
600A	CTB306	4 $\frac{1}{16}$ x 8 $\frac{7}{8}$	(1) $\frac{1}{4}$ x 2	24"	15"	(2) #4-600MCM
800A	CTB308	6 $\frac{1}{16}$ x 8 $\frac{7}{8}$	(1) $\frac{1}{4}$ x 3	24"	15"	(3) #4-600MCM
1000A	CTB310	6 $\frac{1}{16}$ x 8 $\frac{7}{8}$	(1) $\frac{1}{4}$ x 4	24"	15"	(4) #4-600MCM
1350A	CTB313	12 $\frac{1}{8}$ x 8 $\frac{7}{8}$	(2) $\frac{1}{4}$ x 3	24"	15"	(4) #4-600MCM
1600A	CTB316	12 $\frac{1}{8}$ x 8 $\frac{7}{8}$	(2) $\frac{1}{4}$ x 4	24"	15"	(4) #4-600MCM
Copper 3 Phase - 4 Wire, 100% Neutral						
225A	CTB4024	4 $\frac{1}{16}$ x 8 $\frac{7}{8}$	(1) $\frac{3}{64}$ x 2	18"	15"	(1) #6-350MCM
400A	CTB4044	4 $\frac{1}{16}$ x 8 $\frac{7}{8}$	(1) $\frac{1}{4}$ x 1 $\frac{1}{2}$	24"	15"	(1) #4-600MCM
600A	CTB4064	4 $\frac{1}{16}$ x 8 $\frac{7}{8}$	(1) $\frac{1}{4}$ x 2	24"	15"	(2) #4-600MCM
800A	CTB4084	8 $\frac{1}{8}$ x 8 $\frac{7}{8}$	(1) $\frac{1}{4}$ x 3	24"	15"	(3) #4-600MCM
1000A	CTB4104	8 $\frac{1}{8}$ x 8 $\frac{7}{8}$	(1) $\frac{1}{4}$ x 4	24"	15"	(4) #4-600MCM

① Must be factory assembled to busway. Complete device includes 10' Busway.

Consult local sales office for other fittings



Center Cable Tap Boxes are used to cable connect incoming service to BD Busway. Center cable tap boxes are a convenient way to feed power at an intermittent point along the busway system to distribute power in two separate directions. BD Busway center cable tap boxes are provided with robust wire bending space to make pulling cable less labor intensive and are built to easily interchange with a standard 10'-0" plug-in straight length.



Building Expansion Fittings

Ordering Information

Amp Rating	Catalog Number	Housing Size	Busbar Size	Standard Length
Aluminum 3 Phase - 3 Wire				
225A	EPA302	4 $\frac{1}{16}$ x 8 $\frac{7}{8}$	(1) $\frac{1}{4}$ x 1	10'-0"
400A	EPA304	4 $\frac{1}{16}$ x 8 $\frac{7}{8}$	(1) $\frac{1}{4}$ x 2	10'-0"
600A	EPA306	6 $\frac{1}{16}$ x 8 $\frac{7}{8}$	(1) $\frac{1}{4}$ x 3	10'-0"
800A	EPA308	6 $\frac{1}{16}$ x 8 $\frac{7}{8}$	(1) $\frac{1}{4}$ x 4	10'-0"
1000A	EPA310	12 $\frac{1}{8}$ x 8 $\frac{7}{8}$	(2) $\frac{1}{4}$ x 3	10'-0"
1200A	EPA312	12 $\frac{1}{8}$ x 8 $\frac{7}{8}$	(2) $\frac{1}{4}$ x 4	10'-0"

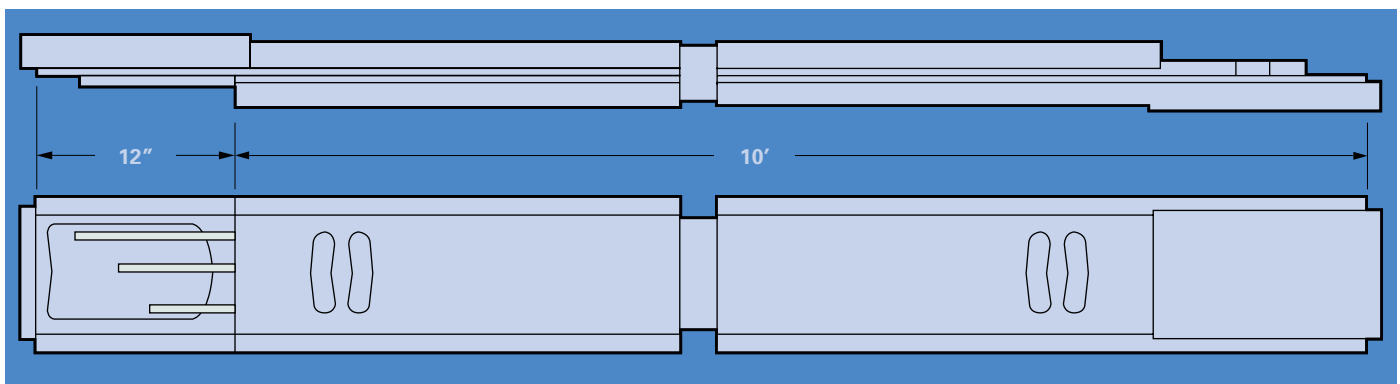
Aluminum 3 Phase - 4 Wire, 100% Neutral				
225A	EPA4024	4 $\frac{1}{16}$ x 8 $\frac{7}{8}$	(1) $\frac{1}{4}$ x 1	10'-0"
400A	EPA4044	4 $\frac{1}{16}$ x 8 $\frac{7}{8}$	(1) $\frac{1}{4}$ x 2	10'-0"
600A	EPA4064	6 $\frac{1}{16}$ x 8 $\frac{7}{8}$	(1) $\frac{1}{4}$ x 3	10'-0"
800A	EPA4084	8 $\frac{1}{8}$ x 8 $\frac{7}{8}$	(1) $\frac{1}{4}$ x 4	10'-0"
1000A	EPA4104	12 $\frac{1}{8}$ x 8 $\frac{7}{8}$	(2) $\frac{1}{4}$ x 3	10'-0"
1200A	EPA4124	12 $\frac{1}{8}$ x 8 $\frac{7}{8}$	(2) $\frac{1}{4}$ x 4	10'-0"

Copper 3 Phase - 3 Wire				
225A	EJP302	4 $\frac{1}{16}$ x 8 $\frac{7}{8}$	(1) $\frac{3}{64}$ x 1	10'-0"
400A	EJP304	4 $\frac{1}{16}$ x 8 $\frac{7}{8}$	(1) $\frac{1}{4}$ x 1 $\frac{1}{2}$	10'-0"
600A	EJP306	4 $\frac{1}{16}$ x 8 $\frac{7}{8}$	(1) $\frac{1}{4}$ x 2	10'-0"
800A	EJP308	6 $\frac{1}{16}$ x 8 $\frac{7}{8}$	(1) $\frac{1}{4}$ x 3	10'-0"
1000A	EJP310	6 $\frac{1}{16}$ x 8 $\frac{7}{8}$	(1) $\frac{1}{4}$ x 4	10'-0"
1350A	EJP313	12 $\frac{1}{8}$ x 8 $\frac{7}{8}$	(2) $\frac{1}{4}$ x 3	10'-0"
1600A	EJP316	12 $\frac{1}{8}$ x 8 $\frac{7}{8}$	(2) $\frac{1}{4}$ x 4	10'-0"

Copper 3 Phase - 4 Wire, 100% Neutral				
225A	EJP4024	4 $\frac{1}{16}$ x 8 $\frac{7}{8}$	(1) $\frac{3}{64}$ x 1	10'-0"
400A	EJP4044	4 $\frac{1}{16}$ x 8 $\frac{7}{8}$	(1) $\frac{1}{4}$ x 1 $\frac{1}{2}$	10'-0"
600A	EJP4064	4 $\frac{1}{16}$ x 8 $\frac{7}{8}$	(1) $\frac{1}{4}$ x 2	10'-0"
800A	EJP4084	8 $\frac{1}{8}$ x 8 $\frac{7}{8}$	(1) $\frac{1}{4}$ x 3	10'-0"
1000A	EJP4104	8 $\frac{1}{8}$ x 8 $\frac{7}{8}$	(1) $\frac{1}{4}$ x 4	10'-0"

BD Busway building expansion fittings are required whenever a BD Busway system passes through the building expansion location. BD Busway building expansion fittings are designed to expand or contract by +/-2".

The BD Busway building expansion fitting is available in a standard 10'-0" length to easily interchange with standard plug-in straight lengths.



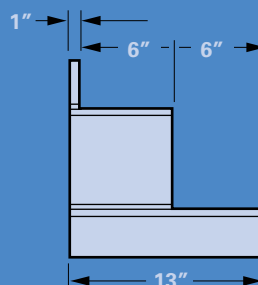
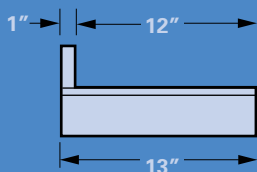
End Closures



Ordering Information

Amp Rating	Catalog Number	Housing Size	Busbar Size
Aluminum 3 Phase - 3 Wire			
225A	ECP6	4 $\frac{1}{16}$ x 8 $\frac{7}{8}$	(1) $\frac{1}{4}$ x 1
400A	ECP6	4 $\frac{1}{16}$ x 8 $\frac{7}{8}$	(1) $\frac{1}{4}$ x 2
600A	ECP10	6 $\frac{1}{16}$ x 8 $\frac{7}{8}$	(1) $\frac{1}{4}$ x 3
800A	ECP10	6 $\frac{1}{16}$ x 8 $\frac{7}{8}$	(1) $\frac{1}{4}$ x 4
1000A	ECP10	12 $\frac{1}{8}$ x 8 $\frac{7}{8}$	(2) $\frac{1}{4}$ x 3
1200A	ECP10	12 $\frac{1}{8}$ x 8 $\frac{7}{8}$	(2) $\frac{1}{4}$ x 4
Aluminum 3 Phase - 4 Wire, 100% Neutral			
225A	ECP6	4 $\frac{1}{16}$ x 8 $\frac{7}{8}$	(1) $\frac{1}{4}$ x 1
400A	ECP6	4 $\frac{1}{16}$ x 8 $\frac{7}{8}$	(1) $\frac{1}{4}$ x 2
600A	ECP10	6 $\frac{1}{16}$ x 8 $\frac{7}{8}$	(1) $\frac{1}{4}$ x 3
800A	ECP10	8 $\frac{1}{8}$ x 8 $\frac{7}{8}$	(1) $\frac{1}{4}$ x 4
1000A	ECP10	12 $\frac{1}{8}$ x 8 $\frac{7}{8}$	(2) $\frac{1}{4}$ x 3
1200A	ECP10	12 $\frac{1}{8}$ x 8 $\frac{7}{8}$	(2) $\frac{1}{4}$ x 4
Copper 3 Phase - 3 Wire			
225A	ECP6	4 $\frac{1}{16}$ x 8 $\frac{7}{8}$	(1) $\frac{3}{64}$ x 2
400A	ECP6	4 $\frac{1}{16}$ x 8 $\frac{7}{8}$	(1) $\frac{1}{4}$ x 1 $\frac{1}{2}$
600A	ECP6	4 $\frac{1}{16}$ x 8 $\frac{7}{8}$	(1) $\frac{1}{4}$ x 2
800A	ECP10	6 $\frac{1}{16}$ x 8 $\frac{7}{8}$	(1) $\frac{1}{4}$ x 3
1000A	ECP10	6 $\frac{1}{16}$ x 8 $\frac{7}{8}$	(1) $\frac{1}{4}$ x 4
1350A	ECP10	12 $\frac{1}{8}$ x 8 $\frac{7}{8}$	(2) $\frac{1}{4}$ x 3
1600A	ECP10	12 $\frac{1}{8}$ x 8 $\frac{7}{8}$	(2) $\frac{1}{4}$ x 4
Copper 3 Phase - 4 Wire, 100% Neutral			
225A	ECP6	4 $\frac{1}{16}$ x 8 $\frac{7}{8}$	(1) $\frac{3}{64}$ x 2
400A	ECP6	4 $\frac{1}{16}$ x 8 $\frac{7}{8}$	(1) $\frac{1}{4}$ x 1 $\frac{1}{2}$
600A	ECP6	4 $\frac{1}{16}$ x 8 $\frac{7}{8}$	(1) $\frac{1}{4}$ x 2
800A	ECP10	8 $\frac{1}{8}$ x 8 $\frac{7}{8}$	(1) $\frac{1}{4}$ x 3
1000A	ECP10	8 $\frac{1}{8}$ x 8 $\frac{7}{8}$	(1) $\frac{1}{4}$ x 4

BD Busway end closures are used at the end of a busway system to close off the run of busway. It can be removed to allow for future connection of additional busway when your power distribution requirements need to be expanded.



Hangers

Ordering Information ^①

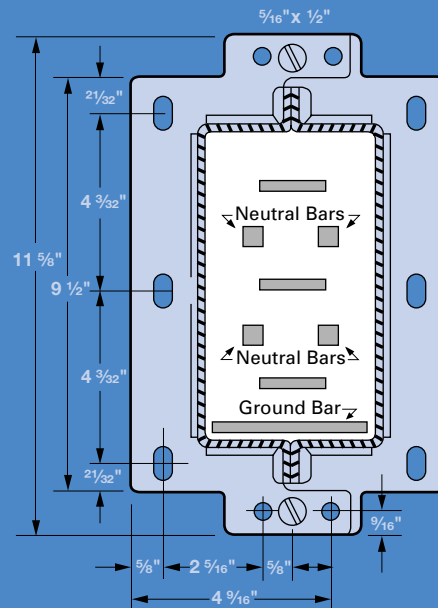
Amp Rating	Catalog Number	Housing Size	Busbar Size
Aluminum 3 Phase - 3 Wire			
225A	BDH10	4 $\frac{1}{16}$ x 8 $\frac{7}{8}$	(1) $\frac{1}{4}$ x 1
400A	BDH10	4 $\frac{1}{16}$ x 8 $\frac{7}{8}$	(1) $\frac{1}{4}$ x 2
600A	BDH10	6 $\frac{1}{16}$ x 8 $\frac{7}{8}$	(1) $\frac{1}{4}$ x 3
800A	BDH10	6 $\frac{1}{16}$ x 8 $\frac{7}{8}$	(1) $\frac{1}{4}$ x 4
1000A	BDH12	12 $\frac{1}{8}$ x 8 $\frac{7}{8}$	(2) $\frac{1}{4}$ x 3
1200A	BDH12	12 $\frac{1}{8}$ x 8 $\frac{7}{8}$	(2) $\frac{1}{4}$ x 4
Aluminum 3 Phase - 4 Wire, 100% Neutral			
225A	BDH10	4 $\frac{1}{16}$ x 8 $\frac{7}{8}$	(1) $\frac{1}{4}$ x 1
400A	BDH10	4 $\frac{1}{16}$ x 8 $\frac{7}{8}$	(1) $\frac{1}{4}$ x 2
600A	BDH10	6 $\frac{1}{16}$ x 8 $\frac{7}{8}$	(1) $\frac{1}{4}$ x 3
800A	BDH10	8 $\frac{1}{8}$ x 8 $\frac{7}{8}$	(1) $\frac{1}{4}$ x 4
1000A	BDH12	12 $\frac{1}{8}$ x 8 $\frac{7}{8}$	(2) $\frac{1}{4}$ x 3
1200A	BDH12	12 $\frac{1}{8}$ x 8 $\frac{7}{8}$	(2) $\frac{1}{4}$ x 4
Copper 3 Phase - 3 Wire			
225A	BDH10	4 $\frac{1}{16}$ x 8 $\frac{7}{8}$	(1) $\frac{3}{64}$ x 2
400A	BDH10	4 $\frac{1}{16}$ x 8 $\frac{7}{8}$	(1) $\frac{1}{4}$ x 1 $\frac{1}{2}$
600A	BDH10	4 $\frac{1}{16}$ x 8 $\frac{7}{8}$	(1) $\frac{1}{4}$ x 2
800A	BDH10	6 $\frac{1}{16}$ x 8 $\frac{7}{8}$	(1) $\frac{1}{4}$ x 3
1000A	BDH10	6 $\frac{1}{16}$ x 8 $\frac{7}{8}$	(1) $\frac{1}{4}$ x 4
1350A	BDH12	12 $\frac{1}{8}$ x 8 $\frac{7}{8}$	(2) $\frac{1}{4}$ x 3
1600A	BDH12	12 $\frac{1}{8}$ x 8 $\frac{7}{8}$	(2) $\frac{1}{4}$ x 4
Copper 3 Phase - 4 Wire, 100% Neutral			
225A	BDH10	4 $\frac{1}{16}$ x 8 $\frac{7}{8}$	(1) $\frac{3}{64}$ x 2
400A	BDH10	4 $\frac{1}{16}$ x 8 $\frac{7}{8}$	(1) $\frac{1}{4}$ x 1 $\frac{1}{2}$
600A	BDH10	4 $\frac{1}{16}$ x 8 $\frac{7}{8}$	(1) $\frac{1}{4}$ x 2
800A	BDH12	8 $\frac{1}{8}$ x 8 $\frac{7}{8}$	(1) $\frac{1}{4}$ x 3
1000A	BDH12	8 $\frac{1}{8}$ x 8 $\frac{7}{8}$	(1) $\frac{1}{4}$ x 4

^① Two hangers included free of charge with each busway section and elbow.
Rod hanger adaptors (UJ100) must be ordered separately.

Two BD Busway hangers are included with every straight length and elbow section ordered. In some applications, you may require additional hangers to accommodate a particular arrangement of busway or to adapt the busway hanger system to the building configuration. Should additional hangers be required, the elbow catalog numbers are provided to make ordering easy.

BDH 10 Clamp Hanger For 4 $\frac{1}{16}$ " and 6 $\frac{1}{16}$ " Busway

For 8 $\frac{1}{16}$ " and 12 $\frac{1}{16}$ " Busway
use Catalog Number BDH12



Three bolt holes in both ends of Hanger allow half the hanger to be adjusted to fit two BD Busway casing sizes (4 $\frac{1}{16}$ " and 6 $\frac{1}{16}$ "). Hanger rods and brackets are supplied by installer.

Plug-In Units Circuit Breaker Type

BD Circuit Breaker Plug-In Units are available in a variety of sizes up to 800A, 600V. To offer you the maximum flexibility in trip ratings required. Our standard BD plug-in units are available as enclosure only and specific Siemens circuit breakers are available at your local Siemens distributor.

In addition to our standard line of plug-in units, Siemens also offers these following custom design plug-in units for your custom applications. Inquire with your local Siemens distributor when ordering these custom plug-in units.

Capacitor Plug-in Units

Capacitor plug-in units range in size from 5 to 15KVA, 240VAC or 480VAC, 60Hz. These plug-in units offer a convenient means for reducing inductive heating and improving the power factor on plug-in busway systems.

Field Addable Ground Kits For BD Bus Plugs ①

Ampere Rating	Catalog Number
Fusible	
30-60	W6323
100	W63232
200	W63233
400	W63234
600	W63234

Circuit Breaker

BEC	W63553
BFC	W63554
BJC	W63238
BLC	W63238
BMC	W63552

Fuse Adaptor Kits – BOS

Amperage	Class "J"	Class "T"	Class "R"
240V AC/250V DC			
30	②	②	W56626
60	②	②	W56628
100	W49827	TFAK32	W55365
200	W49819	TFAK42	W55366
400	W49814	TFAK52	W55367
600	W49813	TFAK62	W55368
600V			
30	W49832	②	W56627
60	W49830	②	W56629
100	W49828	TFAK35	W55365
200	W49819	TFAK45	W55366
400	W49816	TFAK55	W55367
600	W49815	TFAK65	W55368

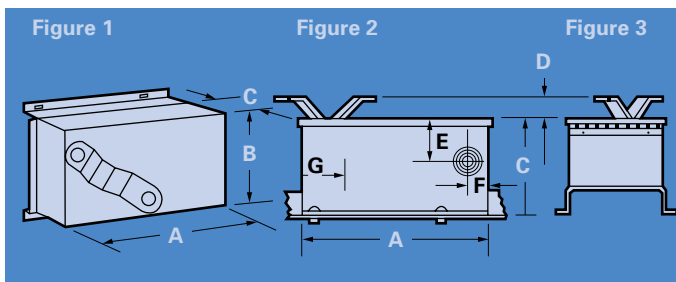
① These are for use on busway with internal ground bus manufactured after March, 1986. For ground kits prior to this date, consult local sales office.

② Not required



Lighting Contactor Plug-in Units

Lighting Contactor plug-in units are rated at 10KVA, furnish single-phase current at reduced voltage (240VAC or 120VAC) for lighting and small motor loads. The AC magnetic contactors are available in two ampere ratings (22A and 45A).



Pipe Spacers

The flanges on plug-in busway plugs are designed to fit 4 1/16" wide busway sections. When plugs are to be attached to larger busway sections, pipe spacers must be used and specified when ordering plugs.

Ordering Information

Frame Size	Ampere Rating	3 Phase, 3Wire Enclosure Only Catalog Number	3 Phase, 4 Wire Enclosure Only Catalog Number	A	Dimensions (Shown In Inches)						G	Conduit Size	Lug Size
Circuit Breaker Plugs-Floor Operable (See Figures 1, 2 and 3)													
E2-A, E4-A, E6-A	100	BEC3100	BEC4100	12 ³ / ₈	7 ⁵ / ₈	8 ⁷ / ₈	1 ¹¹ / ₁₆	3 ¹ / ₂	2 ¹ / ₄	2 ¹⁵ / ₁₆	1/2, 3/4, 1, 1 1/4, 1 1/2, 2	①	
F6, FJ6	250	BFC3250	BEC4250	22	10	8 ⁹ / ₁₆	1 3/4	3 1/8	2 ¹⁵ / ₁₆	3 5/8	3/4, 1, 1 1/4, 1 1/2, 2, 2 1/2	②	
JL6, JJ6, JD2	400	BJC3400	BJC4400	24 1/2	11 3/8	9 ⁹ / ₁₆	1 ¹¹ / ₁₆	3 1/2	3 1/4	4 1/8	No K.O.'s Provided	③	
LL6, LJ6	600	BLC3600	BLC4600	24 1/2	11 3/8	9 ⁹ / ₁₆	1 ¹¹ / ₁₆	3 1/2	3 1/4	4 1/8	No K.O.'s Provided	④	
KM	800	BMC3800	BMC4800	33 ³ / ₁₆	14 1/4	10 ¹³ / ₁₆	1 7/8	5 ³ / ₁₆	3 3/4	3 5/8	No K.O.'s Provided	④	

① 10-30A (1) #14-#8 AWG Cu/Al
(1) #12-#8 AWG Cu/Al
35-100A (1) #8-1/0 AWG Cu/Al
(1) #6-1/0 AWG Cu/Al

② 225A (1) #4 AWG-350 MCM Cu/Al
(1) #6 AWG-350 MCM Cu Only

③ (JL6) 125-225A (1) #4 AWG-300 MCM Cu/Al
(1) #2 AWG-300 MCM Cu/Al
250-350A (1) 250-500 MCM Cu/Al
(1) 350-500 MCM Cu/Al
400A (2) 3/0 AWG-250 MCM Cu/Al
4/0 AWG-250 MCM Cu/Al
(JJ6, JD2) 250-350A (1) 250-500 MCM Cu/Al
(1) 350-500 MCM Cu/Al
400A (2) 3/0 AWG-250 MCM Cu/Al
(2) 4/0 AWG-250 MCM Cu/Al

④ 250-600A (2) #1 AWG-500 MCM Cu/Al
750-800A (3) 300-350 MCM Cu/Al
(3) 400 MCM Cu/Al

Plug-In Units Fusible Switch Type

BD Fusible Switch Plug-in Units are available in a variety of sizes up to 600A, 600V. This plug-in unit line utilizes the Siemens Vacu-Break line of fusible switches, which are quick-make/quick-break designed switches.

Fuses are not included with the BD Fusible Switch Plug-in Units and must be purchased separately. Inquire about your fuse needs with your local Siemens distributor.

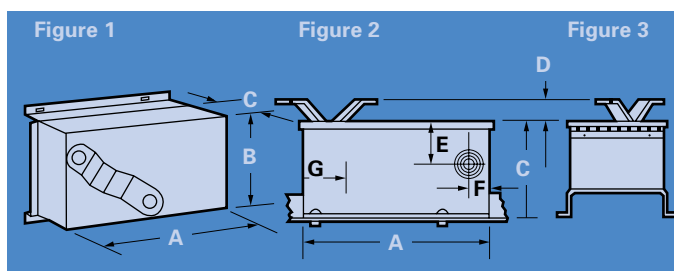
Ordering Information ^①

Volts	Amp Rating	Horsepower Ratings, AC Standard (NEC)	Maximum (Time Delay)	BD Catalog #
3 Phase, 3 Wire				
240AC	30	3	7½	BOS14321
250DC	60	7½	15	BOS14322
	100	15	30	BOS14323
	200	25	60	BOS14324
	400	50	125	BOS14325
	600 ^②	75	200	BOS14326
600AC	30	7½	20	BOS14351
	60	15	50	BOS14352
	100	30	75	BOS14353
	200	50	150	BOS14354
	400	125	350	BOS14355
	600 ^②	200	500	BOS14356

3 Phase, 4 Wire				
240AC	30	3	10	BOS16421
250DC	60	7½	20	BOS16422
	100	15	30	BOS16423
	200	25	60	BOS16424
	400	50	125	BOS16425
	600 ^②	75	200	BOS16426
600AC	30	5 ^②	15 ^①	BOS16451
	60	15 ^②	30 ^①	BOS16452
	100	25 ^②	60 ^①	BOS16453
	200	50 ^②	150 ^①	BOS16454
	400	125 ^②	350 ^①	BOS16455
	600 ^②	200 ^②	500 ^①	BOS16456

^① Bus plugs 400A and smaller require one plug-in openings
600A and larger require two plug-in openings.

^② 480 volt rating.
For J and R fuse clips see page 17.



Pipe Spacers

The flanges on plug-in busway plugs are designed to fit 4 1/16" wide busway sections. When plugs are to be attached to larger busway sections, pipe spacers must be used and specified when ordering plugs.

Fusible Vacu-Break Switch Plugs – Floor Operable (See Figures 1, 2 and 3)

Ampere Rating	A	B	Dimensions (Shown In Inches)			F	G	Conduit Size (K.O.'s)	Lug Size
			C	D	E				
30	12	7½	9	1¾	4½	1½	3½	½, ¾, 1, 1¼	①
60	12	7½	9	1¾	4½	1½	3½	½, ¾, 1, 1¼	②
100	15	7½	9	1¾	4½	1½	3½	½, ¾, 1, 1¼	③
200	19¼	9¾	9¾	9¾	4½	2½	4	1, 1¼, 1½, 2, 2½	④
400	30½	14½	12½	2	—	—	9½	No K.O.'s Provided	⑤
600	30½	14½	12½	2	—	—	9½	No K.O.'s Provided	⑥

① (1) #14-4 AWG Cu/Al
② (1) #14-2 AWG Cu/Al

③ (1) #14-1/0 AWG Cu/Al
④ (1) #6 AWG-250 MCM Cu/Al

⑤ (1) #4 AWG-500 MCM Cu/Al
(1) #6 AWG-250 MCM Cu/Al

⑥ (2) AWG-500 MCM Cu/Al

BD Busway Technical Data

Voltage Drop, Concentrated Loading 3 Phase Line-to-Line Per 100-Feet of Busway at Rated Current

Busway Amp Rating	Voltage Drop by % Load Power Factor—Volts											
Rating	100	90	80	70	60	50	40	30	20	10	0	
Aluminum Conductors												
225	2.70	3.20	3.22	3.17	3.06	2.91	2.77	2.56	2.35	2.12	1.86	
400	2.77	2.98	2.88	2.74	2.57	2.38	2.32	1.94	1.69	1.45	1.19	
600	3.16	3.38	3.27	3.11	2.92	2.71	2.63	2.20	1.93	1.65	1.35	
800	3.18	3.52	3.45	3.31	3.14	2.94	2.70	2.46	2.18	1.90	1.60	
1000	2.77	3.29	3.14	2.96	2.74	2.50	2.26	1.98	1.70	1.42	1.12	
1200	3.10	3.24	3.10	2.92	2.70	2.47	2.23	1.96	1.68	1.39	1.10	
Copper Conductors												
225	1.79	1.93	1.87	1.78	1.67	1.54	1.50	1.26	1.10	.94	.77	
400	2.42	2.87	2.89	2.84	2.74	2.61	2.48	2.30	2.11	1.90	1.67	
600	2.43	2.88	2.91	2.85	2.76	2.62	2.49	2.31	2.12	1.91	1.68	
800	2.48	2.93	2.96	2.90	2.80	2.67	2.53	2.35	2.15	1.94	1.71	
1000	2.41	2.78	2.78	2.71	2.60	2.47	2.32	2.14	1.93	1.73	1.51	
1200	2.07	2.51	2.56	2.52	2.46	2.35	2.24	2.10	1.94	1.76	1.56	
1350	2.21	2.67	2.73	2.69	2.62	2.51	2.39	2.24	2.07	1.88	1.66	
1600	3.30	3.78	2.85	2.80	2.74	2.61	2.50	2.32	2.16	1.95	1.73	

Notes:

1. For plug-in distributed loads, divide voltage drop values by 2.
2. To determine voltage drop line-to-neutral, multiply line-to-line values by .577.
3. Actual voltage drop for different lengths and at loadings less than full rated current can be calculated using the formula:

$$V_d (\text{actual}) = V_d (\text{table}) \times \frac{\text{actual load}}{\text{rated load}} \times \frac{\text{actual length (ft)}}{100 \text{ feet}}$$

4. For 50Hz, multiply reactance (X) by 0.85 and resistance values do not change. For 400Hz, multiply reactance by 3.75 and multiply resistance by 1.4.
Calculate new voltage drop: $V_d = \text{amps load} \times \sqrt{3} (R \cos \phi + X \sin \phi)$ per 100ft., where $\cos \phi = \text{Power Factor}$.

Resistance, Reactance and Impedance Values

Ampere Rating	10 ⁻⁶ Ohms per Foot		Leg Impedance	Line-to-Line Impedance	% Power Factor
	Leg Resistance	Leg Reactance			
Aluminum Conductors					
225	46.15	18.20	49.60	85.95	93
400	40.00	15.80	43.00	74.50	93
600	30.10	12.80	32.70	56.50	92
800	24.00	8.50	25.40	44.00	91
1000	18.00	6.50	19.10	33.10	94
1200	14.75	5.50	15.70	27.20	94
Copper Conductors					
225	69.80	45.10	83.10	143.90	84
400	35.20	22.70	41.90	72.60	84
600	23.60	15.25	28.10	48.60	84
800	17.74	12.03	21.40	37.10	83
1000	13.65	8.64	16.17	28.00	85
1200	9.75	7.35	12.21	21.35	80
1350	9.75	7.10	11.68	20.25	80
1600	8.07	6.37	10.28	17.80	79

Short Circuit Ratings (Shown in kA, RMS at 600VAC maximum)

Ampere Ratings	Aluminum 3Ø, 3w		3Ø, 4w		Copper 3Ø, 3w		3Ø, 4w	
	ABD	ABDH	ABD	ABDH	BDP	BDPH	BDP	BDPH
225	10	25	10	25	10	25	10	25
400	10	25	10	25	10	25	10	25
600	10	25	10	25	10	25	10	25
800	10	25	10	50	10	25	10	25
1000	10	50	10	50	10	25	10	25
1200	10	50	10	50	-	-	-	-
1350	-	-	-	-	10	50	10	25
1600	-	-	-	-	10	50	10	25



BD Busway

Typical Specifications

1.0 General

- A. Furnish and install a complete low impedance prefabricated busway distribution system as shown on the plans.
- B. Busway shall be ____volts____phase____wire.
- C. The ampere ratings, approximate footage, fitting, plug-in units, etc., are shown on the plans. The electrical contractor shall be responsible for routing the busway to coordinate with the other trades. Final field measurements shall be made by the contractor prior to release of the busway for fabrication.

2.0 Short-Circuit Rating and Tests

- A. The short-circuit rating of the busway shall be (*consulting engineer's calculated required ratings*), RMS symmetrical amperes which is the ultimate anticipated short-circuit current available at the source.
- B. The short-circuit rating of the busway shall be determined according to UL Standard No. 857. This rating must be based upon actual tests at the rated short-circuit current for three (3) cycles.

3.0 Basic Construction

- A. Housing
 - 1. The busway housing shall be formed of two identical halves of cold rolled steel, painted with polyester urethane powder paint to provide protection against corrosion.
 - 2. The busway housing shall be totally enclosed non-ventilated for protection against mechanical damage and dust accumulation.
 - 3. Casing ends and busbars of adjacent sections shall overlap to form a scarf lap joint.
- B. Joint
 - 1. Each bus-bar shall be individually bolted to secure electrical connection.
 - 2. It shall be possible to disconnect any joint connection to allow physical removal of busway length without disturbing adjacent busway lengths.
- C. Bus-bars
 - 1. The bus-bars shall be tin plated at all contact surfaces.
 - 2. The temperature rise at any point in the busway shall not exceed 55°C rise above ambient temperature when operating at rated load current.
 - 3. Busbars shall be air insulated.
 - 4. Block type high impact non-tracking insulators shall be used with the casing to support the bus bars, retard the travel of power surges and increase the strength of the busway against short-circuit forces.
- D. Plug-in Openings
 - 1. On plug-in busway plug-in openings shall be spaced on 24-inch centers along both sides of busway and across the joints.
 - 2. All openings shall be usable simultaneously.
 - 3. Busway shall be installed so that plugs are side mounted to permit practical use of all ten plug-in openings.
 - 4. It shall be possible to inspect the plug-in opening and bus-bars prior to the installation of the plug-in unit.

E. Support of Busway

- 1. Hanger spacing shall be noted on layout drawings and shall not exceed manufacturers recommendations.
- 2. Two hangers shall be provided with each busway section for convenient installation.

F. Underwriter's Laboratory Listing

- 1. All straight lengths, fittings, and plug-in units shall be listed and marked in accordance with UL Standard No. 857.

4.0 Voltage Drop

- A. The voltage drop (input voltage minus output voltage) specified shall be based on the busway operating at full rated current at stabilized operating temperature in 25°C ambient temperature.
- B. The three-phase, line-to-line voltage drop shall not exceed 3.78 volts per hundred feet at 90% power factor concentrated load, which condition may exist during motor starting.

5.0 Plug-in Units

- A. Plug-in units shall be ____circuit breaker type or ____fusible switch type with quick-make/quick-break mechanism.
- B. Plug-in units which cannot be operated directly from the floor shall be equipped with suitable means for hookstick operation.
- C. The interrupting rating of circuit breaker plug-in units shall be [] RMS symmetrical amperes.

6.0 Plug-in Unit Safety Devices

- A. Each plug-in unit shall be mechanically interlocked with the busway housing to prevent installation or removal of plug-in units while the switch is in the ON position.
- B. Plug-in enclosures shall make positive ground connection with the ground bus before the contact fingers make contact with the phase bars.
- C. The plug-in units shall be equipped with internal barriers to prevent accidental contact of fish tape and conductors with live parts on the line side of the protective device during time of wire pulling.
- D. Covers of all plug-in units must have "releasable" type interlocks to prevent the cover from being opened when the switch is in the ON position.

7.0 Quality

- A. All busway products shall be manufactured in a facility which is Quality registered to ISO9001.

8.0 Approved Suppliers

- A. All major components shall be of the same manufacturer as the busway. The busway and plug-in units shall be manufactured by Siemens, . . .

The Siemens Advantage: Reliable Products And Reliable Customer Service



Siemens is committed to providing you with reliable products and reliable customer service.

BD Busway has earned the reputation of being the rock of the busway industry and Siemens also provides you with a level of customer service to match.

Siemens has made major investments in providing our distributors with state of the art automated order entry and pricing programs making ordering BC Busway the easiest in the industry.

What that means is quite simple:

**You'll Know What To Expect
And When To Expect It!**

BD Busway has taken 65 years to build and consistently remind you of the quality that it was designed around. Customer Service support of BD Busway is no exception. In today's aggressively competitive environment, average product quality or customer service can be disastrous. A lack of quality in either the product or service can mean the profit you could have made on a project. Dependability is everything!

Siemens employs a national network of field service engineers and product experts, that are ready to provide state of the art technical assistance and customer service, 24 hours per day, 365 days per year. Whether you have a question while at the job site or reacting to an emergency situation, should the need arise, you'll be able to depend on Siemens to assist you through it, regardless of the time of day or night.

You've got to know what to expect and when to expect it!

***Siemens 24 Hour Customer Service
1-800-241-4453***

To Obtain Information
On Other Siemens Products
Specify The Following
Publications:

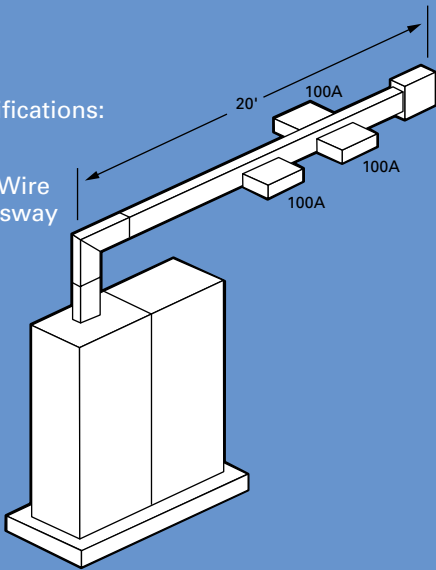
Product Type	Publication
Sentron Busway 225A-5000A Meets Global Specifications	BUSA-0592C
XL-U Busway 225A-5000A Air Insulated Busbars	BUSA-0532C
XJ-L Busway 100A-200A Microprocessor Applications	BUSA-0531E
Trol-E-Duct Busway 100A-200A Power in Motion	BUSA-0521D
Sentron Switchboards	SWBR-0724A
Sentron Panelboards Lighting Power Column Type	PBSA-0452B
TVSS	PBSA-TPS1A-0297
Enclosed Switches	IPSA-0102H
Load Centers	RPSA-3121J
Sentron Circuit Breakers	IPBR-0206A
SB Systems Breakers	IPSA-2202B



Ordering BD Busway Example:

Your Project Specifications:

600A, 3 Phase – 3 Wire
Copper Plug-In Busway



You'll need the following BD Busway B.O.M.:

Quantity	Description	Catalog#
(1)	Busway Stub	FEP306
(1)	Flat Right Elbow	BDP3061
(2)	10'-0" Plug-In Lengths	BDP306
(1)	End Closure	ECP6
(2)	100A Plug-In Units Circuit Breaker Type	BEC3100
(1)	100A Plug-In Unit Fusible Switch Type	BOS14321

Provide your list to your Siemens distributor or let him identify your required B.O.M. from your layout plans for a price quote.

Your Siemens Distributor Is:

Call 1 800 964-4114 for your nearest Siemens Sales Office

Siemens Energy & Automation, Inc.
Distribution Products Division
3333 Old Milton Parkway
Alpharetta, GA 30005

© 1998 Siemens Energy & Automation, Inc.
Siemens is a registered trademark of Siemens AG.

Bulletin BUSA-5331F
20M0698SP Printed in U.S.A.