

LANDIS & GYR CATALOG NO: MM0303L3200CEY
 FEED: TOP OR BOTTOM
 BREAKER LOCATION: SIDE SECTION
 TYPE 3R ENCLOSURE (RAINPROOF).
 SUITABLE FOR USE AS SERVICE EQUIPMENT WHEN NOT MORE THAN SIX MAIN DISCONNECTING MEANS ARE PROVIDED. WHEN USED AS SERVICE EQUIPMENT, BOND NEUTRAL BY SECURING COPPER STRAP TO NEUTRAL WITH SCREW SUPPLIED. AND APPLY "SERVICE DISCONNECT" LABEL NEAR THE DISCONNECT HANDLE.
 DEVICE RATING: 200 AMPS MAXIMUM, 208Y/120 VAC OR 240/120 VAC DELTA *, THREE PHASE, FOUR WIRE.
 METER SOCKET RATING: 200 AMPS CONTINUOUS.
 * CONNECT HIGH LEG (208Y TO GROUND) TO LINE TERMINAL OF THE RIGHT HAND TEST BLOCK.
 THIS DEVICE HAS A MAXIMUM SHORT CIRCUIT CURRENT RATING OF 35,000 RMS SYMMETRICAL AMPERES AT 240 VAC MAXIMUM. (Wait-Hour meter not included in short circuit current rating). ANY CIRCUIT BREAKER INSTALLED, REPLACED OR ADDED IN THIS PANELBOARD MUST BE MANUFACTURED BY SIEMENS AND MUST BE OF THE CORRECT TYPE AS INDICATED IN THE TABULATION BELOW.
 MAX short circuit current rating in RMS symmetrical Amperes
 Field installed 3 pole only Siemens Breaker Types
 35,000 MQL
 22,000 MOH
 10,000 MO

BREAKER RATING MUST BE GREATER THAN OR EQUAL TO THE DEVICE SHORT CIRCUIT CURRENT RATING.
 FOR BREAKERS WITH TRIPPED POSITION IN CENTER, RESET BREAKER BY MOVING HANDLE TO "OFF" AND THEN TO "ON".
 FOR EQUIPMENT GROUND BAR ORDER ECLX SERIES. IF HUB IS REQUIRED SELECT FROM "HC" LIST BELOW, OR USE ECHCRXA ADAPTER WITH HUBS SELECTED FROM RX LIST BELOW.
 HC TYPE HUBS

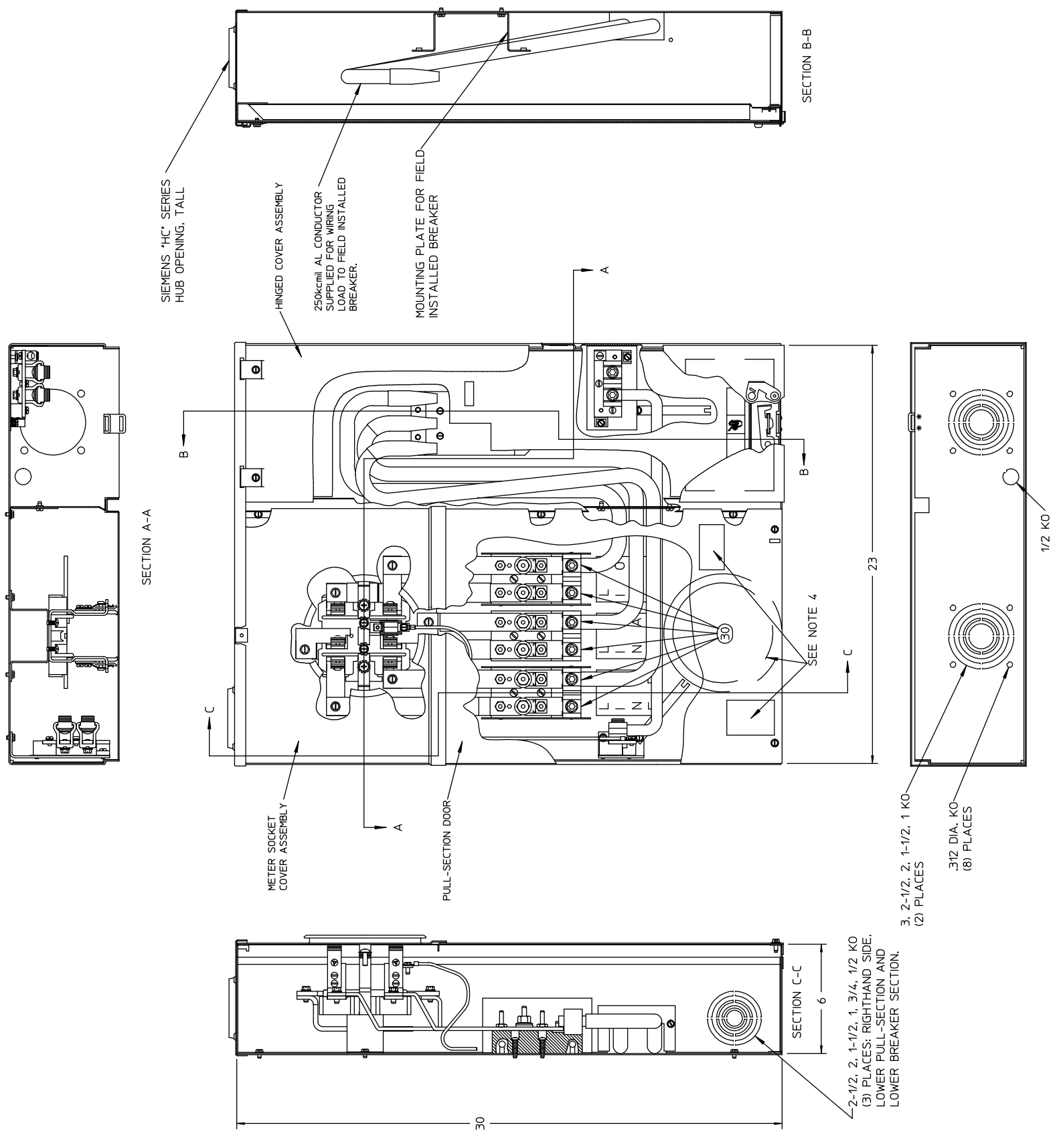
SIZE	CAT. NO.	RX TYPE HUBS	SIZE	CAT. NO.
2"	ECHC200	1-1/2"	1-1/2"	EC38598
2-1/2"	ECHC250	2"	2"	EC38599
3"	ECHC300	2-1/2"	2-1/2"	EC38600

 TERMINALS SUITABLE FOR USE WITH 60/75°C, AL/CU INSULATED WIRE.
 TERMINAL TIGHTENING TORQUES, LB-IN.

WIRE SIZE, kcmil OR AWG	LOAD & NEUTRAL	SERVICE GROUND	EQUIPMENT GROUND
250-2/0	250	---	---
1/0 - 3	50	---	45
4	250	45	45
6	250	45	35
8	---	40	25
10 - 12	---	35	20

 TORQUE TEST BLOCK CIRCUIT CLOSING (DISCONNECT) NUT (5/8" ACROSS FLATS) TO 50 LB-IN.

NOTES:
 1) FINISH: GRAY
 2) CABINET: 16 GA GALV STEEL
 3) 200 AMP CONTINUOUS, 240 VAC, 3 PHASE, 4 WIRE
 4) SEALING RING, HUB COVER PLATE ASY & NEMA INSTRUCTION SHEET PLACED INSIDE OF BOX BEFORE DEADFRONT IS SECURED.
 5) UL LISTED - FILE #E27485.



UNLESS OTHERWISE SPECIFIED DIMENSIONS ARE IN INCHES		-CONFIDENTIAL-PROPERTY OF	
TOLERANCES:		Siemens Energy & Automation, Inc.	
.XX		Residential Products Division	
.XXX		MTR SKT 200A 4T HO EUSERC	
HOLE DIAMETER			
ANGULAR			
UNDIMENSIONED 90° ANGLES			
DWN	WRB	DATE	5/8/07
CHK		DATE	
APVD		DATE	
		SIZE	MM0303L3200CEY
		ISSUE RELEASE NO.	MM0303L3200CEY
		SCALE	DO NOT SCALE DRAWING
		SHEET	1 OF 1