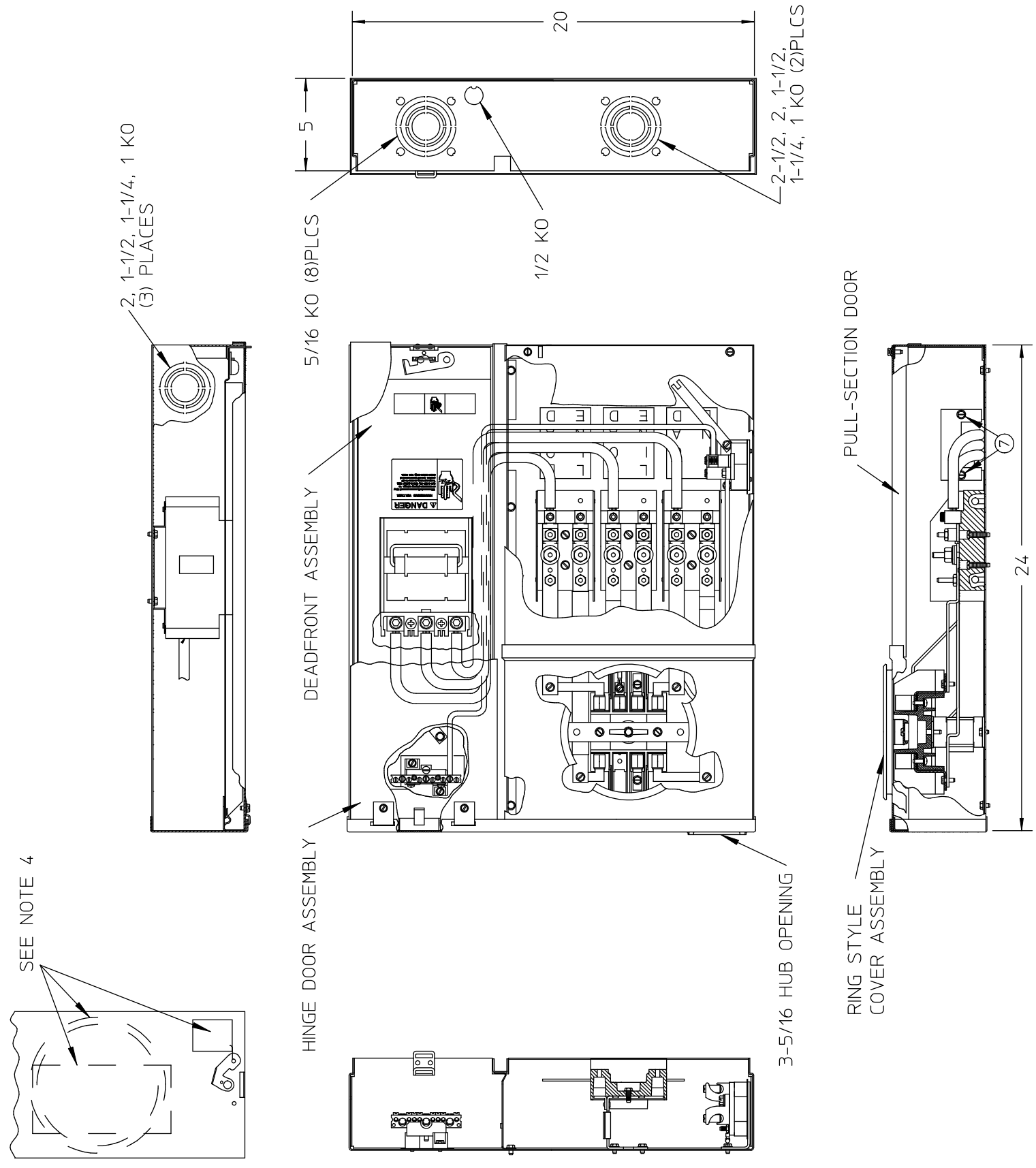


SEE NOTE 4



- NOTES:
- 1) FINISH: GRAY
 - 2) CABINET: 16 GA GALV STEEL
 - 3) 100 AMP, 120/240 VAC, 3 PHASE, 4 WIRE
 - 4) SEALING RING, HUB COVER PLATE ASY, & NEMA INSTR SHEET) PLACED INSIDE OF BOX BEFORE DEADFRONT IS SECURED
 - 5) UL LISTED - FILE E27485

CATALOG NO. MM0303F3100CEY

TYPE 3R ENCLOSURE (RAINPROOF) TOP OR BOTTOM FEED .

PULLOUT SWITCH LOCATION SIDE

SUITABLE FOR USE AS SERVICE EQUIPMENT WHEN NOT MORE THAN SIX MAIN DISCONNECTING MEANS ARE PROVIDED. WHEN USED AS SERVICE EQUIPMENT, BOND NEUTRAL AND APPLY 'SERVICE DISCONNECT' LABEL NEAR THE DISCONNECT HANDLE.

DEVICE RATING: 100 AMPS MAXIMUM; 208Y/120 VAC OR 240/120 VAC DELTA* THREE PHASE, FOUR WIRE.
 METER SOCKET RATING: 100 AMPS CONTINUOUS.
 *CONNECT DELTA HIGH PHASE (208 VAC TO GROUND) TO THE RIGHT HAND TEST BLOCK.

THIS DEVICE HAS A MAXIMUM SHORT CIRCUIT RATING OF 100,000 RMS SYMMETRICAL AMPERES AT 240 VAC MAXIMUM. (WATT HOUR METER NOT INCLUDED IN THE SHORT CIRCUIT CURRENT RATING). WHEN 300 VOLT CLASS T FUSES ARE INSTALLED, REPLACEMENT PULLOUT SWITCH MUST BE OF THE SAME TYPE, RATING AND MANUFACTURER.

TERMINAL RANGES - AWG AND TORQUE (LB-IN) TERMINALS RATED AL/CU EXCEPT AS NOTED.
 PHASE LINE: #2/0-6; TORQUE (110)
 NEUTRAL LINE: #1/0-14;

TORQUE #1/0-3 (50), #4-6 (45), #6 (40), #10-14 (35)
 NEUTRAL LOAD, SERVICE GROUND: #1/0-14CU, #1/0-12AL (LARGE TERMINALS):
 TORQUE #1/0-6 (45), #8 (40), #10-14 (35)
 EQUIPMENT GROUND: #6-14CU, #6-12AL (SMALL TERMINALS):
 TORQUE #6 (35), #8 (25), #10-14 (20).
 TEST BLOCK CCICUIT CLOSING (DISCONNECT) NUT (5/8" ACROSS FLATS), TORQUE 50 LB-IN.

PULLOUT SWITCH LOAD: SIZE WIRE IN ACCORDANCE WITH DEVICE RATING AND WIRE BENDING SPACE. SEE MARKINGS ON PULLOUT FOR TORQUE REQUIREMENTS.

TERMINALS SUITABLE FOR USE WITH 60/75° C, AL/CU INSULATED WIRE.

FOR EQUIPMENT GROUND BAR ORDER ECLX SERIES, IF HUB IS REQUIRED SELECT FROM LIST BELOW.

| RX TYPE HUBS | CAT. NO |
|--------------|---------|
| SIZE 1 1/4" | EC38597 |
| 1 1/2" | EC38598 |
| 2" | EC38599 |
| 2 1/2" | EC38600 |

UNLESS OTHERWISE SPECIFIED DIMENSIONS ARE IN INCHES

TOLERANCES:
 .XX
 .XXX
 HOLE DIAMETER
 ANGULAR
 UNDIMENSIONED 90° ANGLES

| DWN | CJD | DATE | 10-22-07 | SIZE | ISSUE RELEASE NO. | DWG NO. | REV |
|------|-----|------|----------|-------|----------------------|---------|----------------|
| CHK | | DATE | | B | | | MM0303F3100CEY |
| APVD | | DATE | | SCALE | DO NOT SCALE DRAWING | SHEET | 1 OF 1 |

-CONFIDENTIAL-PROPERTY OF
 Siemens Energy & Automation, Inc.
 Residential Products Division

SKT 100A 3P HO EUSERC