

CATALOG NO. MC2442F3200CEY

TYPE 3R ENCLOSURE (RAINPROOF) TOP OR BOTTOM FEED.

SUITABLE ONLY FOR USE AS SERVICE EQUIPMENT.

DEVICE RATING: 200 AMPS MAXIMUM; 208Y/120 VAC OR 240/120 VAC DELTA THREE PHASE, FOUR WIRE. METER SOCKET RATING: 200 AMPS CONTINUOUS.

WHEN USED ON A 240/120 VAC, 3 PHASE, 4 WIRE DELTA SYSTEM, CONNECT THE HIGH LEG TO THE RIGHT HAND TEST BLOCK. THE RIGHT SIDE PANEL BUS WILL THEN HAVE THE HIGHEST VOLTAGE TO GROUND.* ALL BREAKERS CONNECTED TO THIS BUS MUST BE RATED 240 VAC, 120 VAC AND 120/240 VAC RATED BREAKERS MAY ONLY BE CONNECTED TO LEFT SIDE AND CENTER BUSES.

THIS DEVICE HAS A MAXIMUM SHORT CIRCUIT CURRENT RATING OF 100,000 RMS SYMMETRICAL AMPERES AT 240 VAC MAXIMUM. (Wait-Hour meter not included in short circuit current rating) ANY CIRCUIT BREAKER INSTALLED OR REPLACED IN THIS PANELBOARD MUST BE MANUFACTURED BY SIEMENS AND MUST BE OF THE CORRECT TYPE AS INDICATED IN THE TABULATION BELOW.

MAX short circuit current rating in RMS symmetrical Amperes

Installed Service Disconnect

Field Installed Branch Circuit Breaker Types

10,000

200A MAX 300 VAC CLASS T FUSE

Murray MP-T, MP-HT, MP-MT, MP-ET, MP-ET, MP-HET, MD-TR, MD-HTR, MD-MTR OR Siemens OP, OPH, HOP, QT, QPF & QPHF, OE, OEH, ONR, ONRH or HONR

FOR PROPER DEADFRONT FIT, TYPE MD-A, MD-H, MD-TR & MD-HTR BREAKERS IN BRANCH POSITIONS SHOULD BE INSTALLED ADJACENT TO ANOTHER BREAKER.

TERMINALS SUITABLE FOR USE WITH 60/75°C, AL/CU INSULATED WIRE

SIZE WIRE ONLY TO 60°C OR 75°C AMPACITY LIMITS AND IN ACCORDANCE WITH BREAKER MARKINGS AND WIRE BENDING SPACE REQUIREMENTS

SEE MARKINGS ON BREAKERS FOR THEIR WIRING AND TORQUE REQUIREMENTS.

TERMINAL TIGHTENING TORQUES, LB-IN

WIRE SIZE (kcmil or AWG)	□	⊠	○	○
300	---	250	---	---
250-270	---	250	---	---
1/0	---	250	---	45
1-4	---	---	---	45
6	---	---	---	45
8	---	---	---	40
10-14	---	---	---	35

TERMINAL WIRE RANGES (AWG)

- = (1) 250-1/0
- ⊠ = (1) 300 - #6
- = (1) #1-14CU, #1-12AL OR (2 OR 3)* #10-14CU, #10-12AL
- = (1) #6-14CU, #6-12AL OR (2) #12-14CU, #12AL

TEST BLOCK CONTACT NUT (5/8" ACROSS FLATS); TORQUE TO 50 LB-IN.

*ONLY EQUIPMENT GROUND TERMINAL MAY USE MORE THAN ONE CONDUCTOR PER TERMINAL.

FOR EQUIPMENT GROUND BAR ORDER ECLX SERIES, FOR 5TH JAW ORDER UX005B, FOR 1" FILLER PLATE ORDER ECF03, FOR MD OR ON FILLER PLATE ORDER LX400FP IF HUB IS REQUIRED SELECT FROM "HC" LIST BELOW, OR USE ECHCXA ADAPTER WITH HUBS SELECTED FROM "RX" LIST BELOW.

HC TYPE HUBS RX TYPE HUBS

SIZE	CAT. NO.	SIZE	CAT. NO.
2"	ECHC200	1-1/2"	EC38598
2-1/2"	ECHC250	2"	EC38599
3"	ECHC300	2-1/2"	EC38600

UNLESS OTHERWISE SPECIFIED DIMENSIONS ARE IN INCHES

TOLERANCES:

.XX

.XXX

HOLE DIAMETER

ANGULAR

UNDIMENSIONED 90° ANGLES

-CONFIDENTIAL-PROPERTY OF

Siemens Energy & Automation, Inc.

Residential Products Division

MTR SKT 200A 7T HO EUSERC

DWN CJD DATE 10-24-07

SIZE B

ISSUE RELEASE NO.

REV MC2442F3200CEY

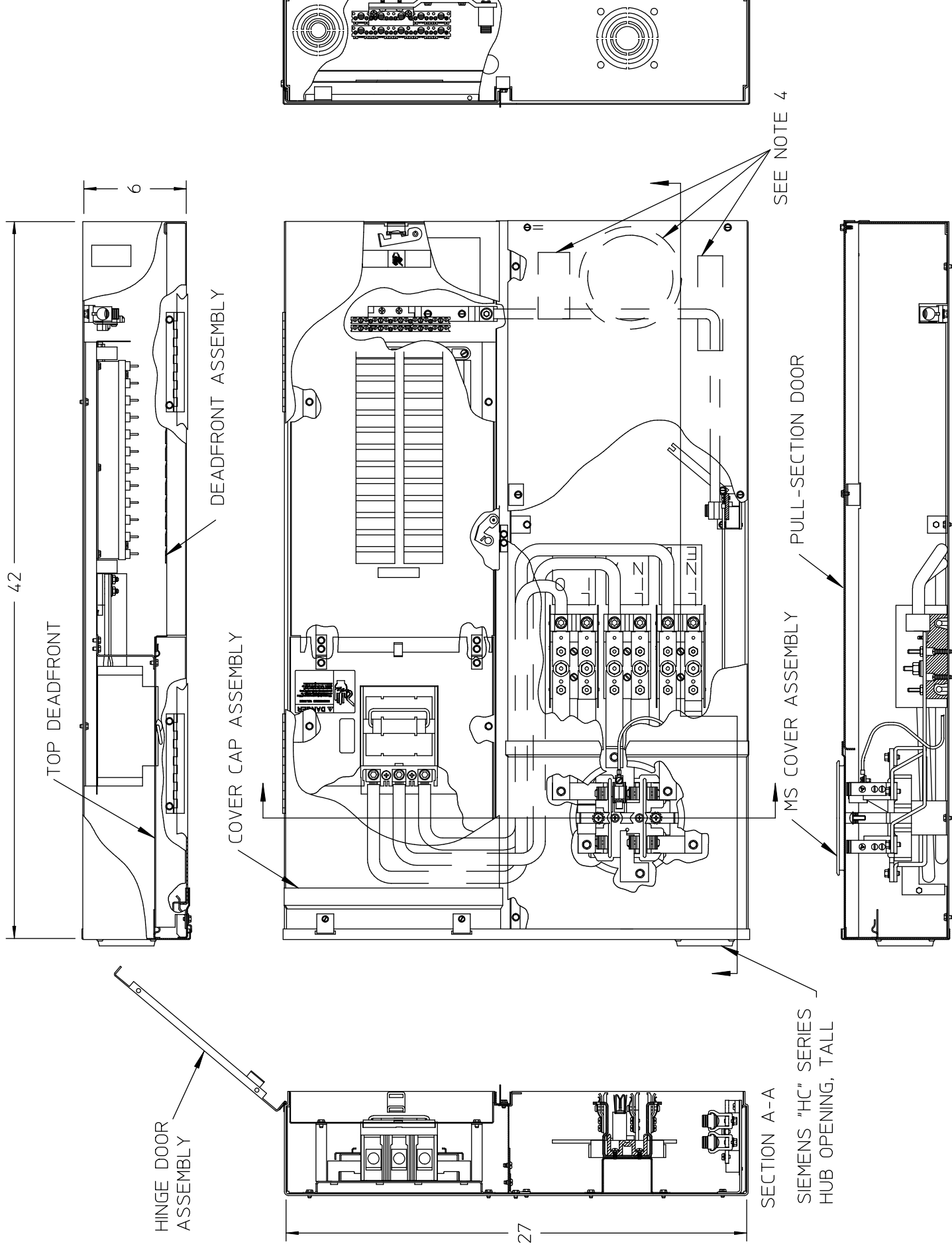
CHK DATE

APVD DATE

SCALE

DO NOT SCALE DRAWING

SHEET 1 OF 1



NOTES:

- 1) FINISH: GRAY
- 2) CABINET BACK IS FABRICATED FROM 14GA. GALVANIZED STEEL, FRONTS FABRICATED FROM 14GA. AND 16GA. GALVANIZED STEEL.
- 3) 200AMP CONTINUOUS, 240 VAC, 3 PHASE, 4 WIRE
- 4) SEALING RING, HUB COVER PLATE ASY, AND NEMA INSTRUCTION SHEET PLACED INSIDE OF BOX BEFORE PULL SECTION DOOR IS SECURED.
- 5) UL LISTED - FILE E27485