

CATALOG NO. MC1224B1100CEY

TYPE 3R ENCLOSURE (RAINPROOF) TOP OR BOTTOM FEED

SUITABLE ONLY FOR USE AS SERVICE EQUIPMENT.

DEVICE RATING: 100 AMPS MAXIMUM, 120/240 VAC (4 JAW), SINGLE PHASE, THREE WIRE, OR 208Y/120 VAC (5 JAW), THREE WIRE. METER SOCKET RATING: 100 AMPS CONTINUOUS.

THIS DEVICE HAS A MAXIMUM SHORT CIRCUIT CURRENT RATING OF 42,000 RMS SYMMETRICAL AMPERES AT 240 VAC MAXIMUM. (Wait-Hour meter not included in short circuit current rating). ANY CIRCUIT BREAKER INSTALLED OR REPLACED IN THIS PANELBOARD MUST BE MANUFACTURED BY MURRAY OR SIEMENS AND MUST BE OF THE CORRECT TYPE AS INDICATED IN THE TABULATION BELOW.

| MAX short circuit current rating in RMS symmetrical Amperes | When the installed main breaker Type is a | And the field installed branch breaker Types are |
|---|---|--|
| 42,000 | Murray Type MP-MT or | Murray MP-T, MP-AT, MP-GT 15-30A, MP-ET, MP-HT, MP-HAT, MP-HET, MP-HGT, MH-T 15-40A or |
| | Siemens Type HQP | Siemens OP, OAF, OPF 15-30A, OE, OPH, OAFH, OEH, QPHF, QT 15-40A. |
| 22,000 | Murray Type MP-HT or | Murray MP-T, MP-AT, MP-GT 15-30A, MP-ET, MP-HT, MP-HAT, MP-HET, MP-HGT, MH-T 15-40A or |
| | Siemens Type OPH | Siemens OP, OAF, OPF 15-30A, OE, OPH, OAFH, OEH, QPHF, QT 15-40A. |
| 10,000 | Murray Type MP-T or | Murray MP-T, MP-ET, MH-T, MP-GT, MP-AT |
| | Siemens Type OP | or Siemens OP, OE, OPH, OPF, OAF |

FOR 1" FILLER PLATE ORDER ECOF3. FOR EQUIPMENT GROUND BAR ORDER ECLX SERIES. FOR 5TH JAW ORDER EC5J. IF HUB IS REQUIRED SELECT FROM LIST BELOW.

RX TYPE HUBS

| SIZE | CAT. NO. |
|--------|----------|
| 1 1/4" | EC38597 |
| 1 1/2" | EC38598 |
| 2" | EC38599 |
| 2 1/2" | EC38600 |

UNLESS OTHERWISE SPECIFIED DIMENSIONS ARE IN INCHES

TOLERANCES:

.XX
.XXX

HOLE DIAMETER
ANGULAR

UNDIMENSIONED 90° ANGLES

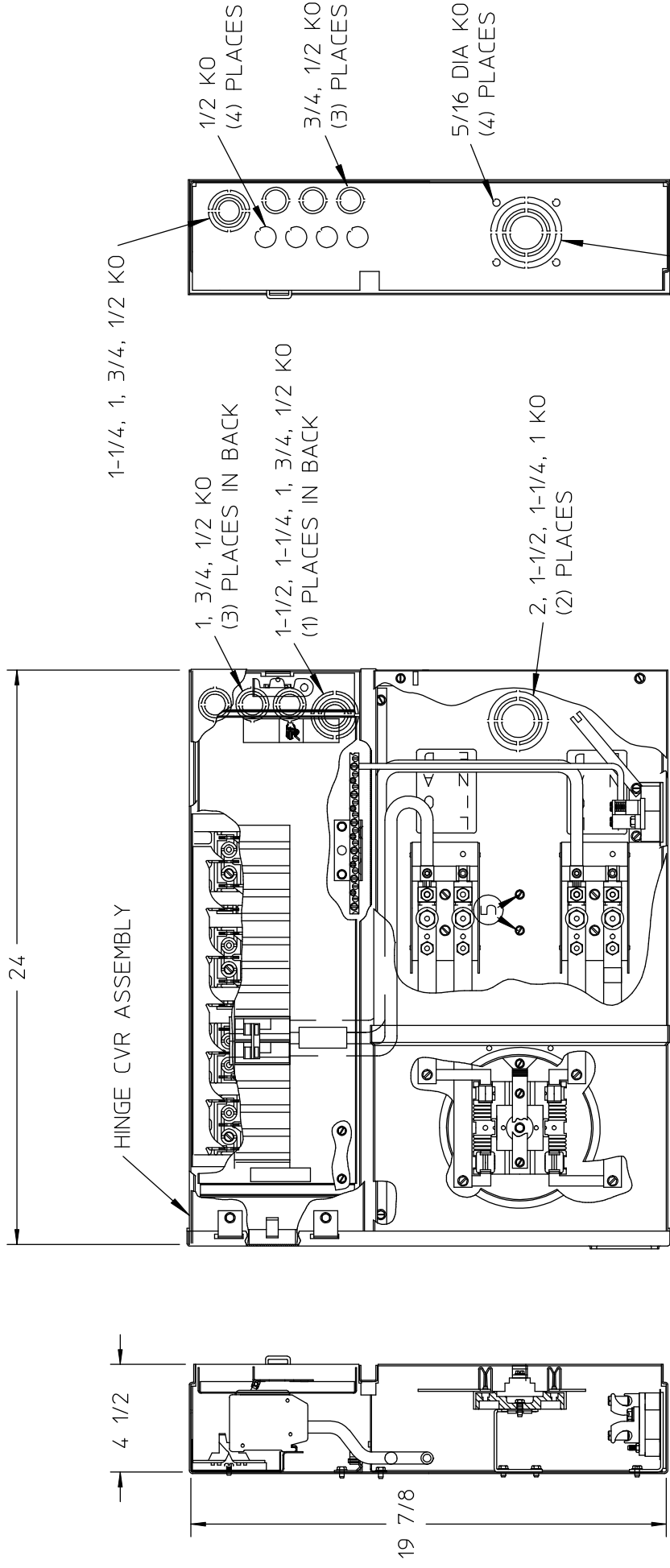
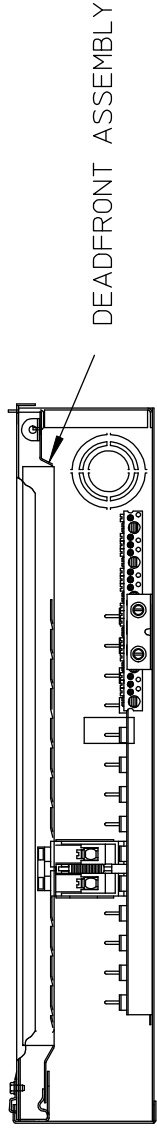
| | | | | | | | | | |
|------|-----|------|----------|-------|---|----------------------|---------|----------------|-----|
| DWN | CJD | DATE | 10-22-07 | SIZE | B | ISSUE RELEASE NO. | DWG NO. | MC1224B1100CEY | REV |
| CHK | | DATE | | | | | | | |
| APVD | | DATE | | SCALE | | DO NOT SCALE DRAWING | SHEET | 1 OF 1 | |

-CONFIDENTIAL-PROPERTY OF

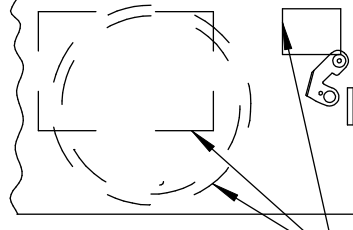
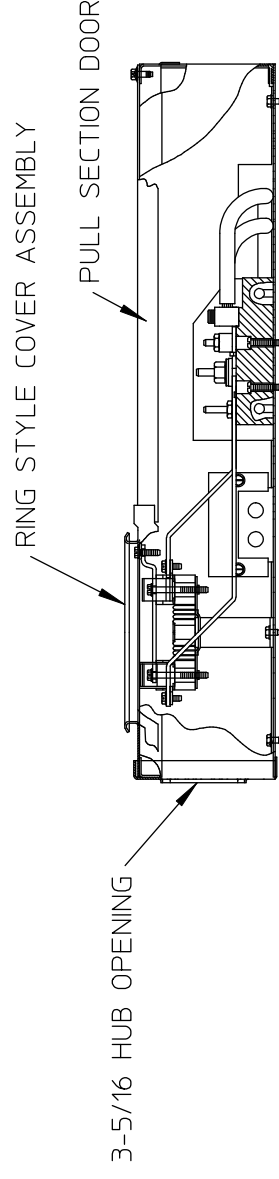
Siemens Energy & Automation, Inc.

Residential Products Division

SKT 100A 1P HO EUSERC



2-1/2, 2, 1/-1/2, 1-1/4, 1 KO



NOTES:

- 1) FINISH: GRAY
- 2) CABINET: 16 GA GALV STEEL
- 3) 100 AMP, 120/240 VAC, 1 PHASE, 3 WIRE
- 4) SEALING RING, HUB COVER PLATE ASY, NEMA INSTR SHEET PLACED INSIDE OF BOX BEFORE DEADFRONT IS SECURED.
- 5) UL LISTED - FILE E27485