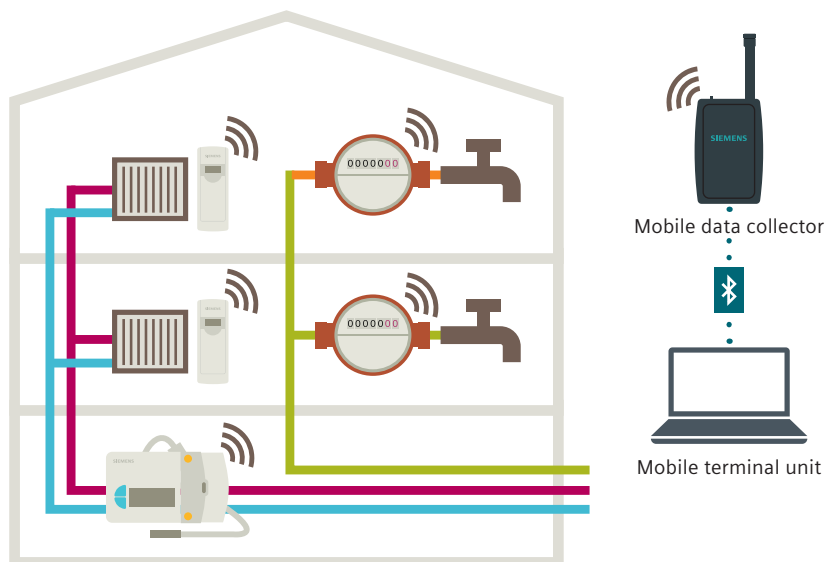


## Walk-by remote meter readout

Efficient and reliable heat and water billing

### Reading data from a distance

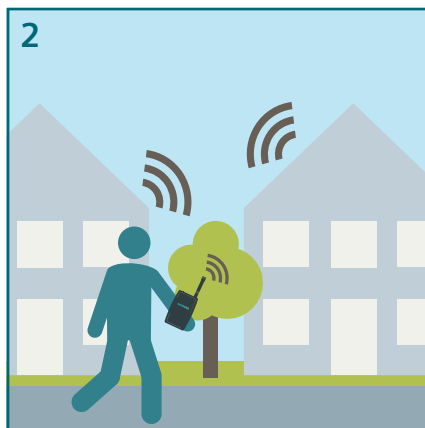
Walk-by remote meter readout allows meter data to be automatically collected via radio signal when the operator is close to a building. The meters transmit their data at short time intervals, and the information can be read at a distance using a mobile data collector and mobile terminal unit (a laptop or tablet running the application software). This makes meter reading very fast and easy and more reliable. Data processing is the key: The mobile data collector accepts the radio telegrams and, after a plausibility check, sends them wirelessly to the laptop via Bluetooth.



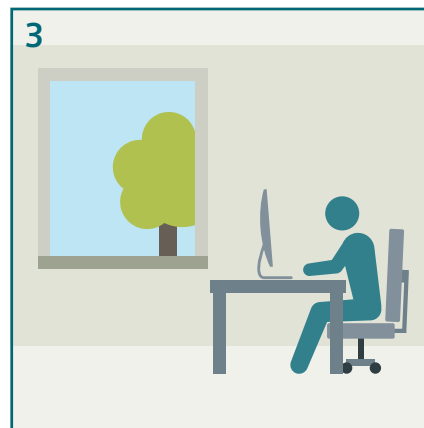
#### How does it work?



Meters can be read even if there's no one at home.



The meter data is collected by simply passing by.



Data is transmitted electronically, eliminating human error.

# Efficient, safe, and reliable: the key benefits of walk-by remote meter readout



## Time saving and convenient

Wireless walk-by meter readout with a mobile data collector allows meter data to be read

without entering a tenant's home. This saves time for both the occupant and meter data service provider. Consumption data is acquired easily, either walking by the building or, in the case of larger facilities, entering accessible areas like stairways.



## Reliable data

Automated meter data collection eliminates human error. The software also shows the number of meters

installed in the building, which ensures that data from the entire building will be collected. Thanks to the digitalized data collection process, no reading errors occur and the data is extremely accurate.



## Greater savings and investment protection

Walk-by meter reading allows meters to be read more often: for example, monthly. The fast and efficient reading process reduces overall meter reading expenses. The high reliability and long meter battery life minimize costs and maximize return on investment.



## 24/7 support from a reliable partner

Siemens provides comprehensive technical support, including a product selection tool (HIT), detailed mounting instructions, data sheets, system handbooks, and on-site support when necessary.

## Technical details

- The mobile data collector accepts meter telegrams in S- and C-mode
- Readings can be conducted 365 days per year, 10 hours a day
- Available on devices running Windows
- ACT46 software is required for laptop readings
- Bluetooth communication between mobile data collector and PC

## Comprehensive product range

Mobile data collector	Water meters
 <p>WTT665-BD5000</p>	 <p>Mechanical water meters: WFX30... (with add-on module: WFZ661) Electronic water meters: WME5...</p>
Heat meters	Heat cost allocators
 <p>WFX6...</p>	 <p>WHE632-D292C</p>

Published by  
Siemens Switzerland Ltd 2018

Building Technologies Division  
International Headquarters  
Gubelstraße 22  
6301 Zug  
Switzerland  
Tel +41 41 724 24 24

Article no. BT\_0160\_EN  
(Status 06/2018)

Subject to changes and errors. The information given in this document only contains general descriptions and/or performance features which may not always specifically reflect those described, or which may undergo modification in the course of further development of the products. The requested performance features are binding only when they are expressly agreed upon in the concluded contract.

© Siemens Switzerland Ltd, 2018