



**SIEMENS**  
*Ingenuity for life*

## Datacenter Clarity LC: creates smart solutions

[siemens.com/dcim](https://www.siemens.com/dcim)

Datacenter Clarity LC™\* provides the tools to accurately and efficiently manage your data center infrastructure. It provides a complete, real-time image of asset attributes in 3D and powerful tools to determine the most efficient data center configuration possible. Datacenter Clarity LC leverages state-of-the-art engineering software tools and puts them in the hands of data center decision-makers, allowing them to optimize energy consumption. Equipment placement is optimized as well, which increases the longevity and availability of the data center infrastructure.

### **Change management in the Web client**

You can now manage changes in the data center directly in the Web client.

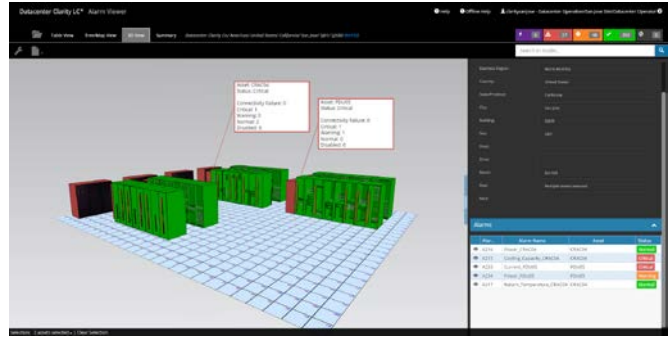
Using the change management function in the Web client, data center operators, IT managers, and facility managers can quickly perform daily tasks such as managing installed-in-rack assets and visualizing and documenting the systems' actual status in real time. All individual tasks are listed in your personal inbox, so it's always easy to track and manage them.

We're pleased to announce the latest release of Datacenter Clarity LC version 3.0, which includes many new enhancements.

\* Datacenter Clarity LC™ is a trademark owned and licensed by Maya Heat Transfer Technologies Ltd.



Datacenter Clarity LC asset management: In Adobe Reader, click on the image to view a quick demo on how to place assets in the Web client



Datacenter Clarity LC alarm management

## Alarm viewer and management in the Web client

As the operator of Datacenter Clarity LC, you can see the location and alarm status of all relevant sites on a world map. The root asset is shown in a hierarchical tree view plotted in relation to all child assets.

### With the alarm viewer, you can:

- See a summary of the alarm count at each level of the tree and asset.
- Navigate to 3D view to assess assets of interest and alarm information. Assets that have no alarms can be set to display translucently for easier visualization of their situation.
- Navigate to the Dashboard Navigator to view real-time values for monitored attributes.
- Customize alarm content to easily send critical alarm status via e-mail and SMS notification.

### Dashboard Builder

The Dashboard Builder has been streamlined, and your custom dashboard is now shareable. A new panel tool for the real-time widget allows you to perform data analyses by:

- Creating groups and pivot tables.
- Calculating sums, averages, and maximum-, minimum-, standard deviations, and more.
- Hiding or filtering attributes that are visible in the table.
- Exporting the data in XLSX, CSV, and JSON formats.

You can now also link a dynamic query to your real-time widget to create generic custom dashboards. The query is leveraged to populate data tables based on the specific context of the asset associated with the dashboard. This minimizes the effort to keep your dashboards up to date as they report on rapidly changing environments.

### Asset management in the Web client

As the operator, you can clone assets, their children, and any internal connections to create common assemblies for on-demand placement – speeding up asset creation and saving time.

Looking for the best place for your asset? The Clarity Index report allows you to specify multiple criteria that are used to evaluate the suitability of racks for the placement of additional assets. Visual reports give you even more information.

The Asset Information dialog box also displays dynamic rack capacity results. Check the Asset Information report for more information and easily share it with other data center stakeholders.

## Highlights

### Asset management

- Clone assets, children, and internal connections to create common assemblies.
- View dynamic rack capacity results displayed in the asset information dialog box.

### Dashboard Builder

- Share custom dashboards throughout your organization.

### Alarm viewer

- View location and alarm status of sites on a world map.
- Navigate to 3D view to visualize assets of interest and alarm information.

### Change management

- Manage changes to your data center using workflow manager.
- View and manage all your tasks in your personal inbox.

Article no. BT\_0132\_EN  
(Status 09/2017)

Subject to changes and errors. The information given in this document only contains general descriptions and/or performance features which may not always specifically reflect those described, or which may undergo modification in the course of further development of the products. The requested performance features are binding only when they are expressly agreed upon in the concluded contract.