

QMX3 Series Room Units



QMX3.P34/P74

QMX3.P30/P70

Product Numbers

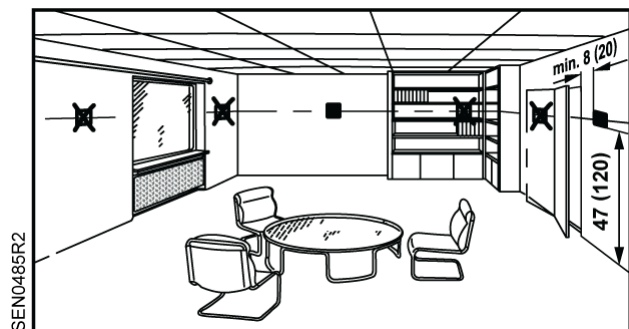
Product Number	Description
QMX3.P30*	Temperature Sensor with Blank Front
QMX3.P34*	Temperatures Sensor with Display and Non-Configurable Touch Keys
QMX3.P70	Temperature, Humidity and CO ₂ Sensor with Blank Front
QMX3.P74*	Temperature, Humidity and CO ₂ Sensor with Display and Non-Configurable Touch Keys

* Including -1BSC, 1WNB and -1WSB variants

Expected Installation Time

20 minutes

Prerequisites



SEN0485R2

Item Number 129-610, Rev. CA

Installation

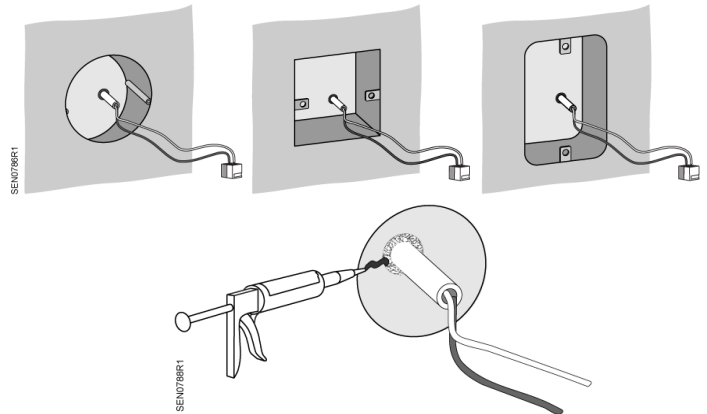


Figure 1. Electrical Wallbox Installation.

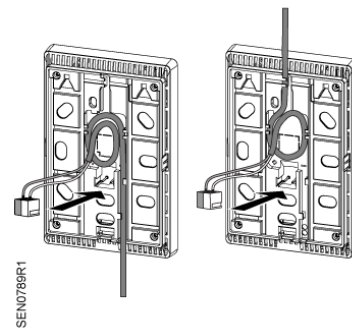


Figure 2. On-Wall Installation.

NOTE:

Use part number QMX3-GSKT (package of 10) if insulation is required between the sensor housing and the wall.

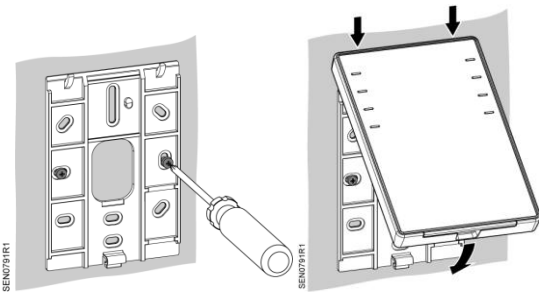


Figure 3. Mounting the Room Unit.

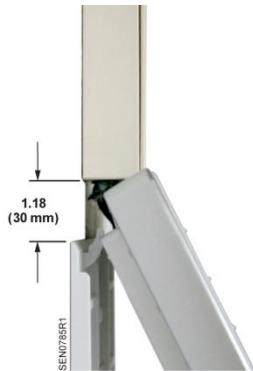


Figure 4. Allowable Mounting Distance.

Dimensions

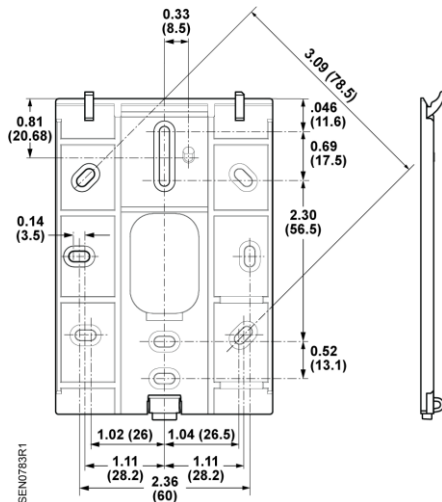


Figure 5. QMX3 Series Room Unit Dimensions in Inches (Millimeters).

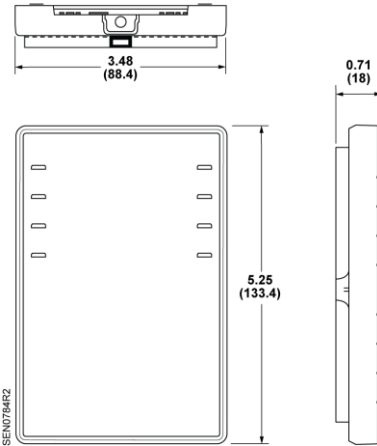


Figure 6. QMX3 Series Room Units Overall Dimensions in Inches (Millimeters).

The installation is now complete.

Service

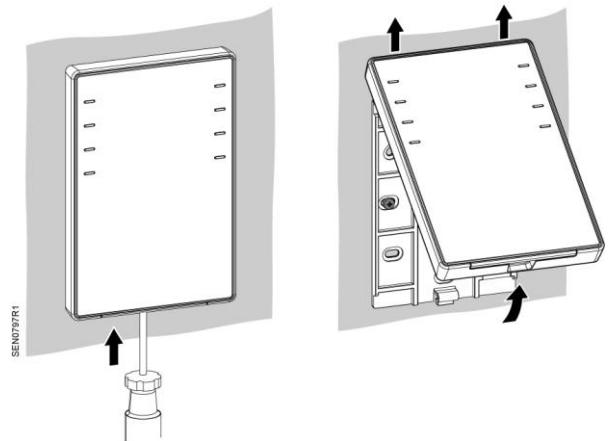


Figure 7. Servicing the QMX3 Series Room Units.

Information in this publication is based on current specifications. The company reserves the right to make changes in specifications and models as design improvements are introduced. Other product or company names mentioned herein may be the trademarks of their respective owners. © 2017 Siemens Industry, Inc.