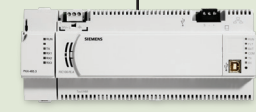


PXC Series Controller Selection Chart

BACnet IP

BACnet



RS-485 MS/TP ALN



BACnet IP – Modular

Model	Roof Top	FLN Supervisor**		Integration Drivers	FPWeb Graphics***	Expansion Bus: TX-I/O
		P1 FLN	BACnet MS/TP FLN			
PXC00-E96.A		◆ 96 or ◆ 96	*	*	*LSM-FPWEBPLHST *LSM-FPWEBPL	*PXF-TXIO.A
PXC100-E96.A		◆ 96 or ◆ 96	*	*	*LSM-FPWEBPLHST *LSM-FPWEBPL	◆

BACnet IP – Compact

Model	Roof Top	FLN Supervisor		Integration Drivers	FPWeb Graphics***	Expansion Bus: TX-I/O
		P1 FLN	BACnet MS/TP FLN			
PXC16.2-E.A					*LSM-FPWEBPL	
PXC24.2-E.A					*LSM-FPWEBPL	
PXC16.2-EF.A	◆				*LSM-FPWEBPL	
PXC16.2-EF32.A					*LSM-FPWEBPL	
PXC24.2-EF.A					*LSM-FPWEBPL	
PXC24.2-EF32.A					*LSM-FPWEBPL	
PXC24.2-ERF.A	◆				*LSM-FPWEBPL	
PXC36-EF.A					*LSM-FPWEBPLHST *LSM-FPWEBPL	◆
PXC36-E.A					*LSM-FPWEBPLHST *LSM-FPWEBPL	*LSM-IB36.A

RS-485 MS/TP FLN



BACnet MS/TP FLN – Compact

Model	Roof Top
PXC16.2-M.A	
PXC24.2-M.A	
PXC24.2-MR.A	◆
PXC16.3-UCM.A	
PXC24.3-UCM.A	

BACnet IP Modular or PXC 36

(BACnet IP MS/TP Routing)

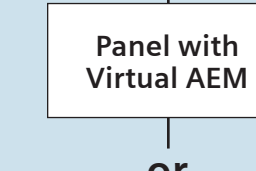
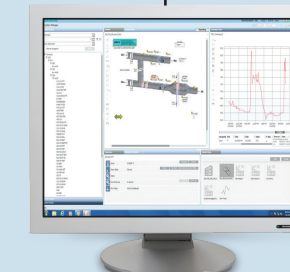
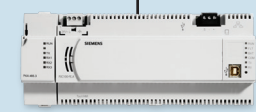
BACnet MS/TP ALN

Model	Roof Top	FLN Supervisor		Expansion Bus: TX-I/O
		P1 FLN	BACnet MS/TP FLN	
PXC16.2-M.A				
PXC24.2-M.A				
PXC24.2-MR.A	◆			
PXC36-E.A				
PXC36-EF.A				
PXC00-E96.A				
PXC100-E96.A				

◆ These features are included
 * Feature supported with purchase of license (followed by quantity supported if applicable)
 ** Feature requires addition of PXX-485.3
 *** Feature requires at least one PXC36 or Modular with license

ETHERNET TCP/IP

Proprietary



P2 TCP/IP – Modular

Model	Roof Top	P1 FLN Support**	Integration Drivers	Virtual AEM	FPGO	Expansion Bus: TX-I/O
PXC100-PE96.A		◆ 96	*	*LSM-VAEM	*LSM-FPGO	◆

P2 TCP/IP – Compact

Model	Roof Top	P1 FLN Support	Integration Drivers	Virtual AEM	FPGO	Expansion Bus: TX-I/O
PXC24.2-PE.A						
PXC24.2-PER.A	◆					
PXC24.2-PEF.A						
PXC24.2-PEF32.A						
PXC24.2-PERF.A	◆					
PXC36-PE.A						
PXC36-PEF.A						

RS-485 P2 ALN

P2 ALN – Modular

Model	Roof Top
PXC00-PE96.A	
PXC100-PE96.A	

P2 ALN – Compact

Model	Roof Top	Supervise P1 FLN	Integration Drivers	Virtual AEM	FPGO	Expansion Bus: TX-I/O
PXC24.2-P.A						
PXC24.2-PR.A	◆					
PXC24.2-PEF.A						
PXC24.2-PEF32.A						
PXC24.2-PERF.A	◆					
PXC36-PE.A						
PXC36-PEF.A						

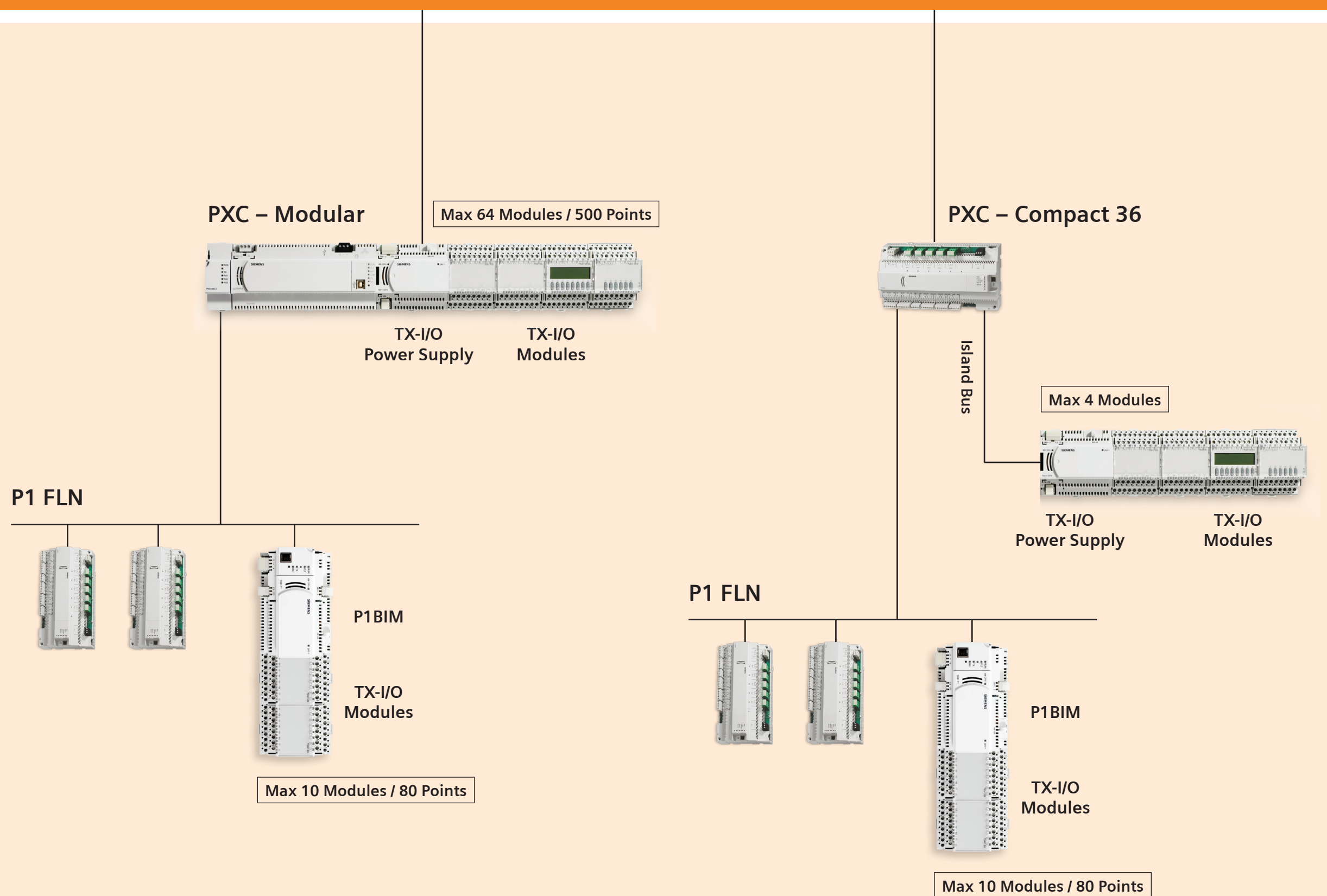
P1 FLN – Compact

Model	Roof Top
PXC16.2-P.A	
PXC24.2-P.A	
PXC24.2-PR.A	◆

◆ These features are included
 * Feature supported with purchase of license (followed by quantity supported if applicable)
 ** Feature requires addition of PXX-485.3

BACnet or Proprietary ALN (Ethernet or RS-485)

TX-I/O Architecture



Accessories

PXC Modular Series Accessories	
PXX-485.3	Expansion Module – adds up to three RS-485 connections – add for P1 or MS/TP FLN
License Options for PXC Series Controllers	
LSM-FLN	FLN support (32 devices) for Compact 16 and 24 series panels
LSM-FLN36.A	FLN support (96 devices) for Compact 36 series panels
LSM-VAEM	Virtual AEM for Compact and Modular series (requires P2 ALN on RS-485)
LSM-IB36.A	TX-I/O for Compact 36 models only
LSM-36.A	Both TX-I/O and FLN support 96 devices on specific Compact 36 models
LSM-FPGO	Field Panel GO on PXC Compact 36 and Modular panels – proprietary only
PXF-TXIO.A	TX-I/O on PXC Modular
LSM-INT-MDBS.A	Modbus Driver License*
LSM-INT-.....A	Refer to Availability List for other Integration Drivers ie: Barber Colman Network 8000, JCI N2, Staefa Smart, Trane, and more.*
LSM-SNMP	Enables SNMP Agent on PXC Modular
LSM-EMP	Enables Energy Meter Proxy on PXC Compact 16
LSM-FPWEB	Enables Field Panel Web Services – BACnet only
LSM-FPWEBPL	Enables Field Panel Web Services for FIN Graphics
LSM-FPWEBPLHST	Enables Field Panel Web Service Host FIN Graphics
* iKnow/Infolink/Integration/Availability List	
HMI Options for PXC Compact Series Controllers	
PXA8-M	8-switch HOA
PXA16-M	16-switch HOA
PXA16-MR	16-switch HOA, Rooftop applications
PXA-HMI.CABLEP5	Accessory HOA/HMI cable for PXC 16 or 24 (5 pack)
PXM10S	Local User Interface – Controller Mounted (BACnet, P2 TBD)
Enclosures and Service Boxes	
PXA-ENC18	UL 508A, NEMA 1, pull box style. 18Hx14Wx6D
PXA-ENC19	UL 864, NEMA 1, hinged door w/lock 19Hx22Wx5.75D
PXA-ENC34	UL 864, NEMA 1, hinged door w/lock 34Hx22Wx5.75D
PXA-DIN16KIT	Accessory kit with (4) 16" DIN rails
PXA-TIEBAR	Accessory kit with (4) 4.5" and (4) 9.5" tie bars
PXA-SB115V192VA	UL864, 115V, 50/60Hz, 24Vac sized for 192VA output, duplex service outlet
PXA-SB115V384VA	UL864, 115V, 50/60Hz, 24Vac sized for 384VA output, duplex service outlet
PXA-SB230V192VA	UL864, 115V, 50/60Hz, 24Vac sized for 192VA output, duplex service outlet
PXA-SB230V384VA	UL864, 115V, 50/60Hz, 24Vac sized for 384VA output, duplex service outlet
PXA-HMI.RMKIT	PXM10T/S & HOA Remote Door Mount Kit
TX-I/O Modules and Accessories	
TXB1.P1	P1 Bus Interface Module (BIM) – 10 modules
TXB1.P1-4	P1 Bus Interface Module (BIM) – 4 modules
TXA1.IBE	TX-I/O Bus Expansion Module
TXS1.12F4	TX-I/O Power Supply – 4A
TXS1.EF4	TX-I/O Bus Connection Module
TXM1.8D	Digital Input Module – 8DI
TXM1.16D	Digital Input Module – 16DI
TXM1.6R	Digital Output Module – 6DO
TXM1.6R-M	Digital Output Module – 6DO with manual override switches
TXM1.8U	Universal Input/Output Module – 8 points
TXM1.8U-ML	Universal Input/Output Module – 8 points, local override
TXM1.8X	Super Universal Input/Output Module – 8 points
TXM1.8X-ML	Super Universal Input/Output Module – 8 points, local override