

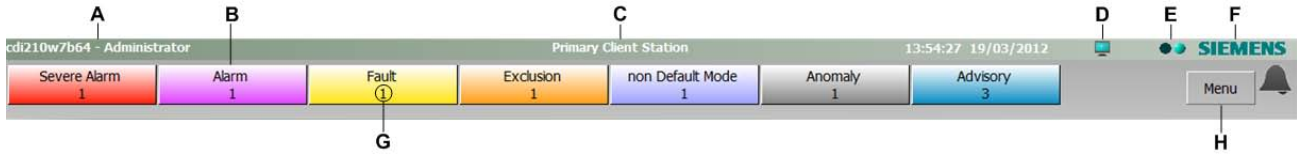
SIEMENS



MM8000 MP4.80 Management Station Operation

Quick Reference Guide
for installed clients

Event Summary Bar

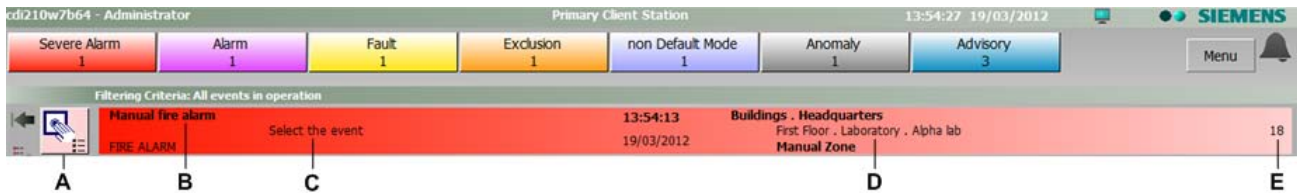


- A Workstation / User – in a multiple server configuration, also displays the server name
- B Event counter – illuminates and flashes when there is a new event
- C Station indicator – indicates whether station is primary/secondary client (configurable)
- D Alignment – click to display communication between MM8000 and control units
- E System status – system is active when flashing green (software functioning properly)
- F SIEMENS logo – displays the version of MM8000 when clicked; also details about installed add-ons, floating licenses, and hotfixes
- G Number of current events in event category
- H Menu button – provides access to all other system functions such as browsers, administrative tools, and external applications

Event treatment

Treat events in the Event List in either fast or assisted treatment mode.

Note: Assisted treatment available only if configured.




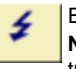





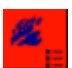
Event List components:

- A Event icon – single-click to go to *fast* treatment; double-click to go to *assisted* treatment
- B Source causing the event
- C Action to take
- D Event time and location. **Note:** a countdown timer for acknowledgement or reset timeout may also display for fire alarms.
- E Event number

Note: To print the Event List (filtered / unfiltered) select the **Print** icon 

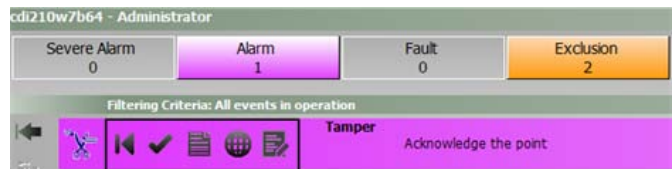
Fast treatment – command icons only

Event icon appearance (what it tells you)









Icon Background Display	Example	Status
Background colour solid – flashing from dark to light	 	Event not noticed Note: Icon shows fast treatment availability only
	 	See Note below
Background grey – top corner flashing from dark to light	 	Event noticed; further action required
Background grey – top corner not flashing		No action required
Background solid dark – not flashing		Event being treated

Note: Assisted treatment availability is indicated by bullet list in lower-right corner of icon.

Event treatment command icons



Location of command icons in Event treatment window

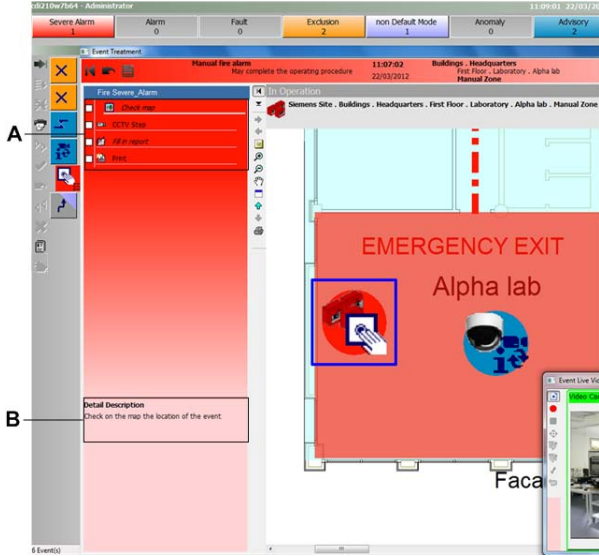
-     Acknowledge, Silence, Reset, Close
Note: These icons appear in the same position in the command toolbar.
-  Suspend the event
-  Display the Point properties page
-  Display the Plant Browser
-  Attach a note to the event

Note 1: Icons not available appear dimmed.

Note 2: Icon colour corresponds with event category colour.

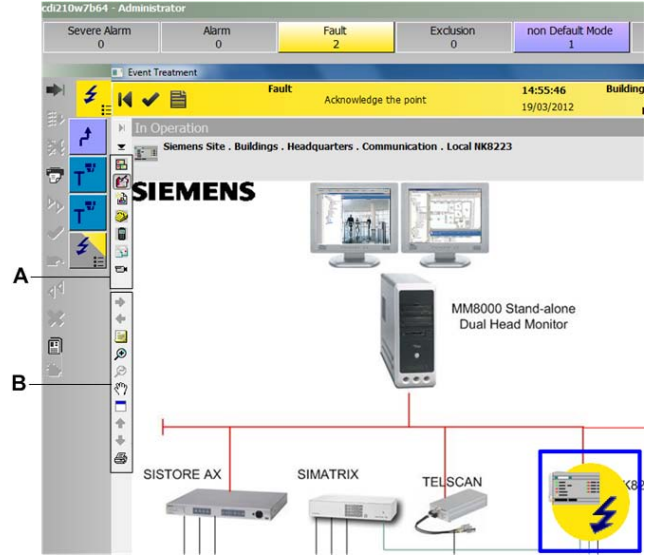
Assisted treatment – command icons and treatment steps

Assisted treatment window – Guided



- Note:** Mandatory procedure steps appear in bold text; other steps are optional.
- A Check boxes with text for procedural steps to perform
 - B Detailed instructions (if any)

Assisted treatment window – Free

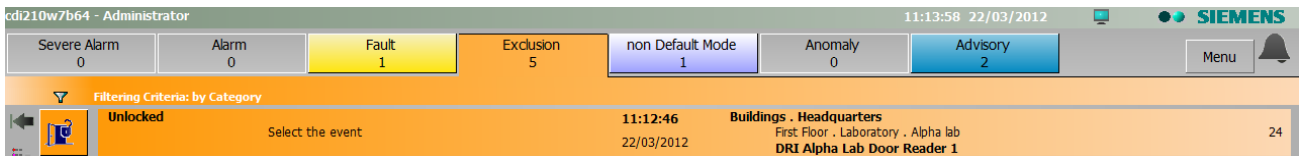


- Note:** No procedure; the icons to perform optional steps are located on left of pane.
- A Free treatment icons
 - B Navigational icons

Event filters

Apply a filter to view specific types of events in the Event list. Use:


- **Quick** filter to display a specific category of events
- **Simple** filter to display events with an attribute in common (such as discipline)
- **Advanced** filter to display events with two or more attributes in common



Quick: Select the Event counter from the Summary Bar (Quick filter applied above for Exclusions).



- A **Simple:** Select the filter icon then select an attribute to display a menu to choose from
 - B **Advanced:** Select 'Advanced Filter' then deselect attributes you don't want to see
- Note:** Create a **Custom** Filter for reuse by saving an Advanced filter.

To deactivate: Select the **Remove filter** icon  located left of the Event icon area.

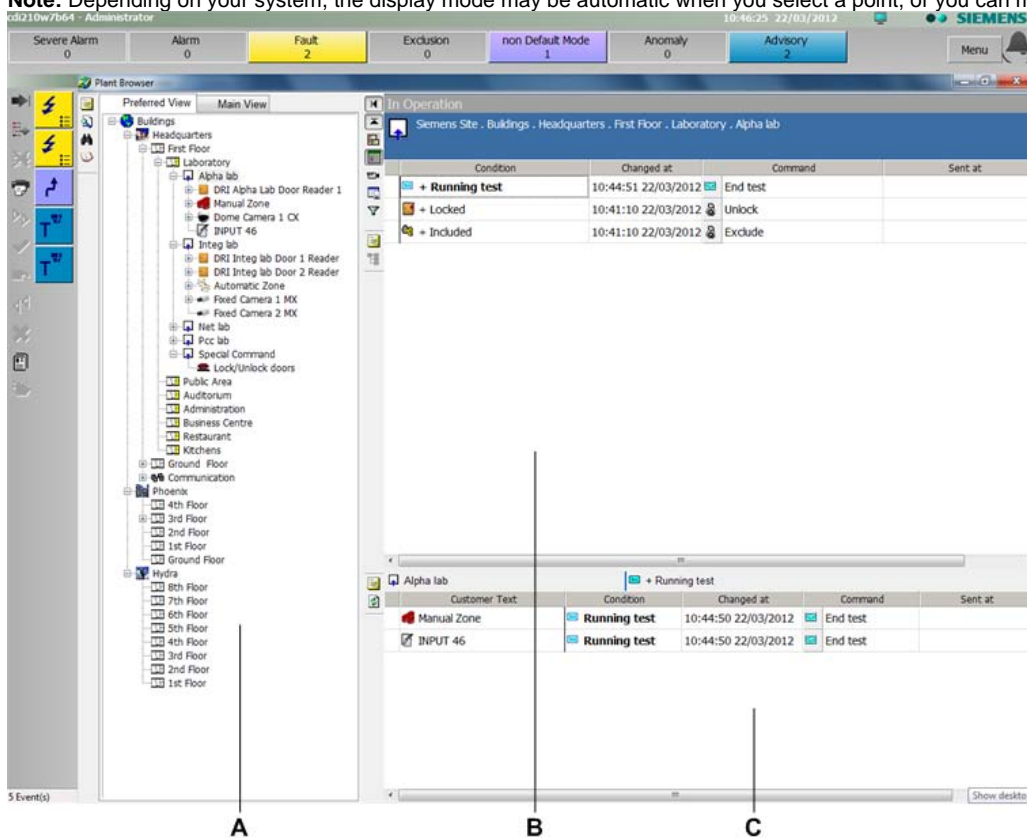
Plant Browser

To access the Plant Browser: Select **Menu > Browsers > Plant Browser** from the Summary Bar.

There are three ways or modes that the Plant Browser can display:





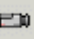





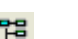
- Point detail view
- Map view
- Live video

Note: Depending on your system, the display mode may be automatic when you select a point, or you can manually select it.










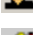


- A Hierarchical tree
- B Information window (Point detail, Map, or Live video view)
- C Detail window

Navigational icons – Point detail view












Point detail icon	Description	What it does:
	Expand/collapse ¹	Expand/collapse the hierarchical tree.
	Show/hide ¹	Show/hide detail view of item selected.
	Point detail view	Turn on point detail view to see properties of the item selected in the tree.
	Map view	Turn on map view to see where the item selected in the tree is located.
	Video view	Turn on live video for a selected point.
	Save layout ¹	Save the Plant Browser layout.
	Filter ¹	Use the filter to select a different view, such as <i>Main</i> or <i>Preferred</i> .
	Full / Normal Screen	Open the Plant Browser in full screen mode and return to normal mode
	Point Properties	Open point properties window for the item selected in the hierarchical tree.
	Refresh	Refresh detail view.
	Geographical/Physical view	See the Geographical/Physical location description of a selected link in the Geographical tree. Note: This icon has a different function in map view.

1) Your ability to see these icons is configuration-dependent

Navigational icons – Map view





Map icon	Description	What it does:
	Next/previous	Go to next / previous page of map (respectively).
	Zoom in/out	Zoom in or zoom out on the map that you selected.
	Reload	Reload the page to display the original view (cancels effects of zooming and panning).
	Pan	Slides the map (pans) around on the page.
	Aerial view	Displays a pop-up window with an overview of the entire map.
	Print	Prints the current view of the map including printout date and time, station name, and user name. Note: Also available in the assisted event treatment map step.
	Jump back to starting point	When jumping from one map to another via links, takes you back to the first map (default display).
	Home	Go to <i>home</i> , which is the top-most node of tree. Note: Display is blank unless a map is associated with this node.
	Link back	Link back (or up) one level in the tree to display map associated with that node.
	Full / Normal Screen	Open the Plant Browser in full screen mode and return to normal mode

Video control icons – Video view

Video control icon	Description	What it does:
	Quad view/Single view	Toggle the display from a single camera view to up to four camera views. Quad view enables the quad view control icons. (e.g., ).
	Restore default setting	Restore the pre-configured default camera view (quad view).
	Select cameras	Display a menu to allow you to choose to display all cameras associated to a point, or point cameras only.
	Show live video	Start displaying the streaming video images as they are received from the camera.
	Search recorded video	Search and then display a local recorded video file.
	Start/Stop recording	Start / Stop recording video images into a local file.
	PTZ controls	Open a control panel for PTZ camera controls (Pan / Tilt / Zoom).
	Next/Previous camera	If more cameras are associated to the current point, select the next camera/previous camera.
	Play	Play a pre-recorded video.
	Acknowledge/Reset	Acknowledge / Reset a camera if a motion detection event occurs. Note: Command availability is camera model-specific.


Other useful Plant Browser icons

Note: These icons are located in the upper-left corner of the Plant Browser window.

Icon	Description	What it does:
	Find	Opens a dialog box to enable you to search for a text string that occurs in the hierarchical tree.
	Point properties	Opens the Point properties window for the item selected in the hierarchical tree.
	Zoom	Creates a tab with only the selected tree node (and its children).
	Quick History	Enables you to start a query and view history registrations related to the selected point or set of points (sub-tree, multiple selections), optionally filtered for a specific period of time. You can print and export the resulting report. See step-by-step procedure below.

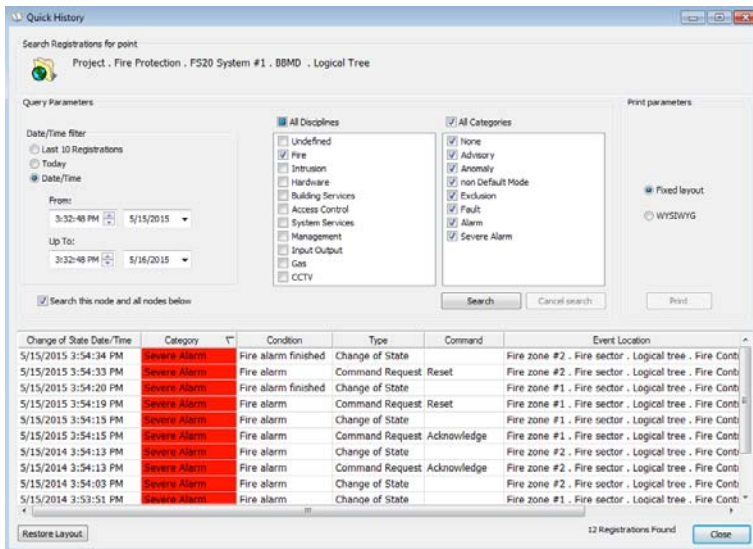
Quick History

To start a quick history search from the Plant Browser:

1. In the Plant Browser, select one or more points from the tree or on a map.
 2. Click the Quick History icon  or right-click the selection and choose **Quick History**.
 3. In the **Query Parameters** section, choose a period of time for which to run your search (query).
 4. If you wish to consider in the query the entire tree of child nodes, select the **Search this node and all nodes below** check box
 5. Filter the search according to one or more **Disciplines** and/or **Categories**.
 6. Click **Search** to display the query results (max 200 registrations).
- Press **Cancel search** to stop a running query that you no longer want to complete.

To customize and print your quick history report:

1. Resize the **Quick History** window as necessary to properly show the columns that you are interested in.
2. Hide the columns that you are not interested in by placing the cursor on the right side of a column heading and dragging it to the left. To re-display hidden columns, click **Restore Layout**.
3. In the **Print parameters** section, select the printout format and click **Print**.

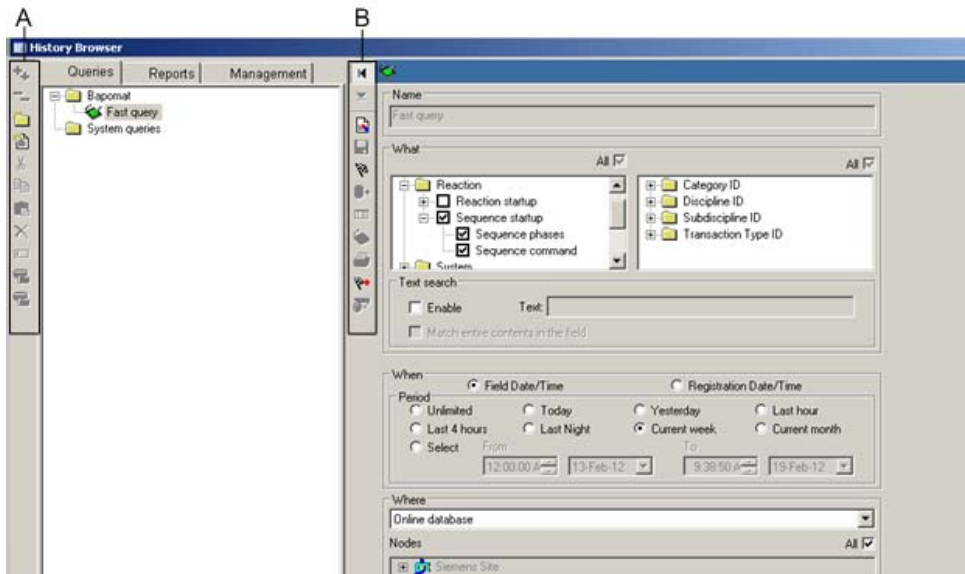


History Browser

To access the History Browser: Select **Menu > Browsers > History Browser** from the Summary Bar.




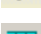







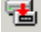

There are three views in the History Browser. (Select the appropriate tab to change views.):

- **Query view:** Displays the parameters to select from in order to generate a report.
- **Report grid view:** Displays the report information specified in the query.
- **Management view:** Displays online database, archiving, and retrieval information.



- A** Editing, archiving and retrieving icons
Note: Select a query and use the editing icons to copy, move, paste, or delete it.
- B** Query and report icons

Important History Browser icons

Icon	Description	What it does:
	Clear fields	Reset query information to be contained in a report to <i>All</i> .
	Generate Report	Generate a report based on the parameters specified in the query. Note: Report limited to 10,000 registrations.
	Generate report and export	Generate a report for export only. Note: Exports ALL registrations (not limited to 10,000).
	Save report layout	Saves the report layout generated by a specific query, or the layout of a report saved in the Reports tab.
	Export	Export an open report in .csv file format to a user-specified location.
	Default report layout	Reset columns to the default report layout.
	Back to originating query	Display the query that generated a saved report. Note: The saved report must be open for this icon to be active.
	Get All Children	Display child registrations of a parent registration that occurred after the end time parameter of a report query. ➔ For details, see MM8000 Operation Manual.
	Open attachment	Open the attachment associated with a selected registration.
	Archiving	Archive the current database (all registrations) in .bak file format to a user-specified location. This action returns the database saturation level to 0. Note: For client stations, when browsing for where to store the archive, if you store the archive on your local disk, it will not be available to the server station. To store somewhere other than on your local hard drive, browse the network.
	Retrieval	Retrieve and restore a user-specified archived file to the database. Note: Limited to one restored file only. Select the Management tab to delete any existing restored file before attempting to restore a new archive.
	New Query	Open the new query page.
	Rename	Allow renaming of queries and /or reports.

Scheduler

To access the Scheduler: Select **Menu > Browsers > Scheduler** from the Summary Bar.

The screenshot displays the Scheduler application interface. On the left, a tree view (A) shows a hierarchy of tasks: Scheduled Tasks (Daily Task 1-4, Emergency, Special Tasks), Manual Tasks (Quick Manual Tasks, Fire Protection, Intrusion). The main area shows a calendar (B) for June 2015, with the 8th highlighted as the current date. Below the calendar, a table (C) lists time programs for Monday, 08 June 2015 - Working:

Name	Description	Executes on day	Scheduled execution time	Modified execution time	Reminder
Door control unlock	Controlling door floor 1	Working	Begin of Open		Defined
Door control lock		Working	End of Open		Not defined

At the bottom, a 24-hour timeline (D) shows organization modes: Close (red) from 00:00 to 06:00, Open (green) from 06:00 to 19:00, and Close (red) from 19:00 to 24:00.

- A Tree view displaying Scheduled and Manual tasks, organised in folders.
- B Calendar displaying day types.
Note: After launching the Scheduler, highlighted day is current date.
- C List of time programs, if any, with possible reminders for selected date.
- D Organisation modes for selected date.

How to modify / define Scheduler elements

Modify calendar day type:

1. Select a date in the calendar and select the drop-down arrow to change day type.
2. Select **Yes** to confirm the change.

Modify organisation mode or time program start times:

Note: For organisation modes, you cannot modify the initial start time – only successive start times; for time programs, scheduled execution time must be a specific time of day.

1. Select a date in the calendar.
2. **Organisation modes:** Double-click on the start time you want to change.
Time programs: Double-click in the **Modified execution time** field.
3. Enter new start time in format hh.mm (based on 24-hour clock).
4. Click anywhere on the screen.
5. Select **Yes** to confirm the change.

Define a scheduled task:

1. Select the **Scheduled Tasks** folder in the tree.
2. Select the **Add New** icon located left of the tree.
3. Select the new task node in the tree.
4. Select the **Set task in edit mode** icon located left of the schedule task window.
5. Select when you want the task to occur using the drop-down arrows.
6. Select the **Add Point** button to add a point to the Point List.
7. Drag and drop the points you want included in the task from the Plant Browser tree to the Point List in the lower part of the task window.
8. Select the **Add Action** button.
9. Select a command and time setting for the action and select **OK**.
10. Repeat steps 8 – 9 for all other actions in the task.
11. Save the task by selecting the **Save changes** icon.
12. Select the **Make operative** icon.


Define a manual task:

1. Select the **Manual Tasks** folder in the tree.
2. Follow steps 2 – 4 above for defining a scheduled task.
3. Select the **Add Point** button to add a point to the Point List.
4. Drag and drop the points you want included in the task from the Plant Browser tree to the Point List in the lower part of the task window.
5. Select the first command from the drop-down list to be executed when you start the countdown.
6. Specify the amount of time to pass in the format hh:mm (countdown timer) before you want the second command executed.
7. Specify the second command to be executed when the countdown has expired.
8. Save the task by selecting the **Save changes** icon.


– Start a manual task by selecting the **Start countdown** icon.

Quick manual tasks from the Plant Browser:

To start a Quick manual task from the Plant Browser:

1. Select one or more points and do one of the following:
 - Click the Point properties icon  in the toolbar, or right-click the selection and choose **Point properties**. In this way, you will need to hold the CTRL key and click on the command you want to handle send as a manual task.
 - Right-click the selection and choose **Point properties with Quick manual task**. In this way, the manual task is the default command mode and you will just click the command icon (you do not need to hold the CTRL key).
2. Click on the command you want to send.
The **Quick Manual Task** dialog box opens and displays the commands to be executed. For example, if you click on **Exclude**, the second command field is automatically filled in with **Include**.
3. Specify the amount of time to elapse before the second command is sent (in hh:mm).
4. Click the **Start** button to execute the task.

To cancel a running Quick manual task, or to send the second command immediately:

1. Launch the Scheduler
2. Select the task, and then click the Abort icon . A message box appears where you can:
 - Click **Yes** to stop the countdown timer, and execute the second command immediately.
 - Click **No** to stop the countdown timer without executing the second command.

Note: Upon successful completion, tasks are deleted from the Quick Manual Tasks folder in the Scheduler where they are stored. Instead, aborted tasks remain in the folder and you must manually delete them.