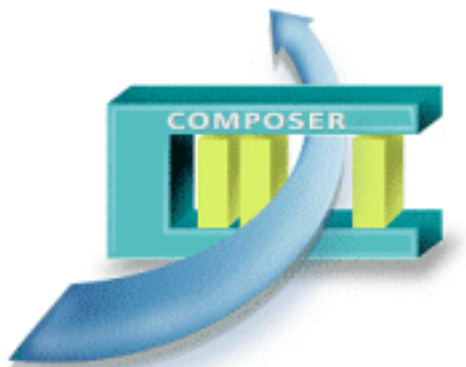


# SIEMENS



**Composer MP4.70**

**WW8000**

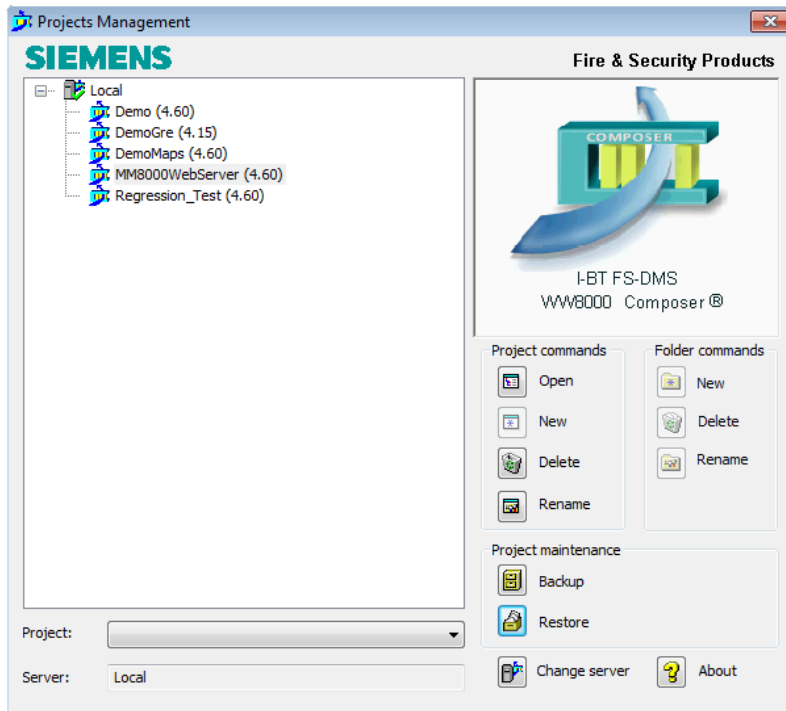
**Configuration  
Quick Reference Guide**

**Building Technologies**

Fire Safety & Security Products

# Projects Management window

When you start Composer, the following window displays:



- **Open** the selected project in the tree. You can also open a project by double-clicking it in the Project tree and you can also open other projects from within Composer.
- Create a **New** project. Name the project using no special characters:  
`\ / * ? < > " | : (colon) . (period)`  
 You can create additional projects after launching Composer.
- **Delete** the selected project.
- **Rename** a selected project.
- Create a **New** folder.
- **Delete** an existing folder.
- **Rename** an existing folder.
- **Backup** the selected project (creates .BAK file).
- **Restore** a compressed .BAK project file.
- **Change server:** Change the server connection. If working in Remote Composer and/or in Multi-user mode, select this function to locate the server to which you want to connect.  
 → For details on different modes of operation, see the Technical Manual A6V10062401.
- **About:** See detailed information about the current version of Composer. Select **Advanced** to view licenses currently installed.

Fig. 1 Projects Management window

**Note:** The Project Market Package version is indicated in parentheses, e.g. (4.50).

## Configuration workflow – Composer Shortcuts

### General workflow steps when configuring a project:

1. Structure the project (set up the folder structure).
2. Insert the communication network.
3. Insert the subsystems and import the corresponding metafiles.  
**Hint:** Use **CTRL+arrow** to quickly move a selected node up or down  
 OR  
**ALT+mouse** to drag and drop a node into another position.  
 Use the Shift key to insert more than one new node at the same time.
4. Link the subsystems to the network (drag and drop).
5. Customise the behaviour of the DMS.
6. Download the configuration.
7. Backup your project.

### Shortcuts

- |        |  |
|--------|--|
| Ctrl+I | Display a menu of nodes available for insertion: Use the arrow keys to select the node and then press Enter. For multiple insertions, press Shift+Enter. |
| Ctrl+R | Repeat last insert node action. For multiple insertions of the last node inserted, press Ctrl+Shift+Enter.   |
| Ctrl+L | 1. Select the node to link and press Ctrl+C.<br>2. Select the node to link and press Ctrl+L  |
| Ctrl+Q | Create a zoom view of the selected node (+ its child nodes).   |

### Shortcuts

- |        |   |
|--------|---|
| Ctrl+C | Copy the selected node (+ child nodes)  |
| Ctrl+V | Paste a node (+ child nodes)  |
| Alt    | Move a node (+ child nodes) to a new position at the same level in the tree by selecting and dragging.        |
| Shift  | Move a node (+ child nodes) to a new position in the tree by selecting and dragging OR Insert multiple nodes. |

### Shortcuts

- |          |  |
|----------|--|
| F6       | Change focus to the next available tree (in the case of a split tree) and/or to the data view.     |
| Shift+F6 | Change focus to the previous available tree (in the case of a split tree) and/or to the data view. |
| F7       | Change focus from the current Tree View to the corresponding data view.                            |
| F8       | Change focus to the next available tab – either in the tree view or the data view.                 |
| Shift+F8 | Change focus to the previous available tab – either in the tree view or the data view.             |

# Menus / tree functions

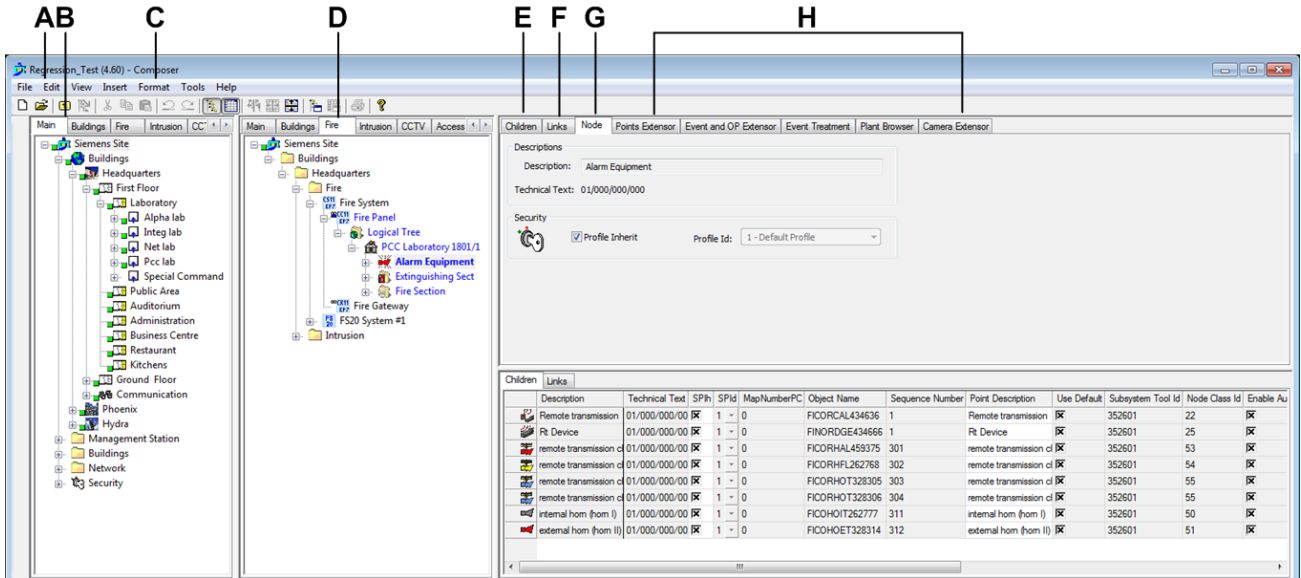


Fig. 2 Split tree example with split data view

Item:	Select:	To:
A	Edit → Find	Quickly locate a node in the tree.
	Edit → Find Next	Quickly locate a successive node in the tree.
C, D	Format → Filter → New	Set up a filter to display one or more disciplines and/or object types. (See D above.)
	Format → Grid	Show/Hide/Sort columns in the data view.
	Format → Zoom	Focus on a specific part of the tree.

## Tab features

The Tabs shown in Fig. 2 contain the detailed information needed for configuration. The Tabs B and E through G are always present. All other Tabs that are displayed depend on the node selected and the DMS the project is configured for.

Item:	Select:	To:
B	Main tab	Display all the contents of the tree.
E	Children tab	Display all the children of a node. The visibility of the properties can be flexibly set as needed. Furthermore, this view can be used to edit the configuration parameters of the children nodes in a single step similar to MS Excel.
F	Links tab	Find where the link to a node is in tree. Navigate between the links by double-clicking the icon.
G	Node tab	View detailed properties for a selected node.
H	...	Use these tabs to access all other detailed configuration data, such as event treatment or Plant Browser pages. <b>Note:</b> Tabs displayed will vary depending on node selected.

# Standard Toolbar

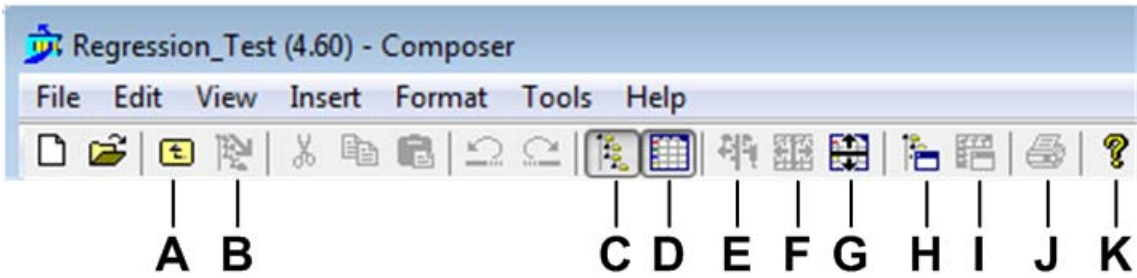


Fig. 3 Standard toolbar

Item:	Select:	To:	Description:
A		Move up one node level in the tree.	Select this icon to move up a level in the tree.
B		Expand the levels in the tree.	Display a pre-selected number of levels in the tree (up to <i>All</i> ). <b>Note:</b> To set the number of node levels to display, select <b>Tools</b> → <b>Options</b> .
C		Show/hide the view of the tree.	Hide the tree and view only technical information (or data) for a selected node.
D		Show/hide the data view of a selected node.	Hide the data and view only the tree.
E		Split the tree into two or more views (up to eight).	Display the tree in multiple views so you can simultaneously view different parts of your project. Use this function to drag and drop in large projects, or to focus on a specific part of the tree with the <i>Zoom</i> or <i>Filter</i> functions (see section <i>Configuration workflow</i> ).
F		Split the grid view.	Display the grid in multiple views to simultaneously view different properties of a node.
G		Split the data view.	Drag the tab bar down to separate the <i>Children</i> and <i>Links</i> tabs from the rest of the data. (See Fig. 1 in section <i>Configuration workflow</i> for example.)
H		Display the tree properties.	Select this icon to display current tree properties, and to also choose how you want the tree to be displayed ( <i>Description</i> , <i>Technical text</i> , or both). <b>Note:</b> The <i>Technical text</i> is the unique <i>CSX</i> number of the control units.
I		Display the grid properties.	Select this icon to choose what you want to display on the grid.
J		Print a report detailing some or all of the project structure.	Activate the report wizard to configure reports to print out selected nodes, levels, or the entire tree. (See also section <i>Tab features</i> .)
K		Display Help.	See the <i>Help</i> window to learn more about a topic, or see information relevant to the <i>Composer</i> project.

Siemens Switzerland Ltd  
 Infrastructure & Cities Sector  
 Building Technologies Division  
 International Headquarters  
 Fire Safety & Security Products  
 Gubelstrasse 22  
 CH-6301 Zug  
 Tel +41 41 724 24 24

[www.siemens.com/buildingtechnologies](http://www.siemens.com/buildingtechnologies)

Document no. A6V10067783\_a\_en  
 Edition 09.2014

© 2014 Copyright by  
 Siemens Switzerland Ltd  
 Data and design subject to change without notice.  
 Supply subject to availability.

MM8000 Technical Material  
 Section 6