

Cerberus™ FIT

Output module (230 V)

FCA1209-Z1



Output module for use in monitored output lines

- Output with potential-free relay contacts for controlling fire ventilators, air conditioning systems, elevators, doors, and control systems
- Direct integration in a monitored output line
- Two-wire installation for all cable types
- No external power supply
- Output status display
- Use in dry, dusty, or humid environments
- Different mounting options

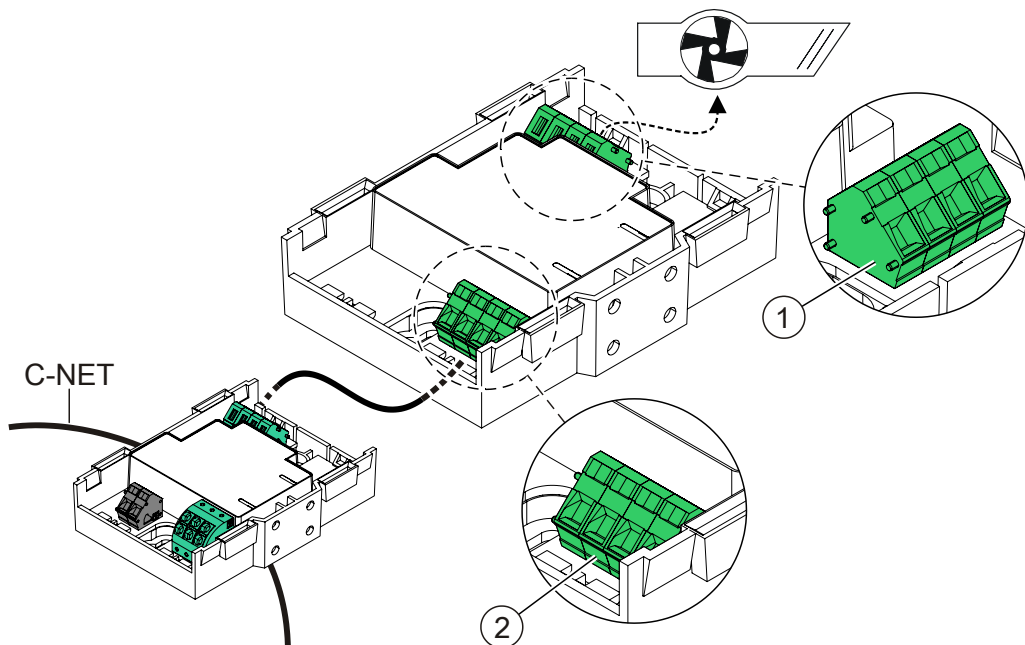
Properties

- Protected electronics
- Transparent housing, ensuring that the indicator is easy to see
- Use housing for dusty or humid environments
- Eco-friendly
 - Environmentally friendly processing
 - Reusable materials
 - Electronic parts and synthetic materials can be easily separated

Functions

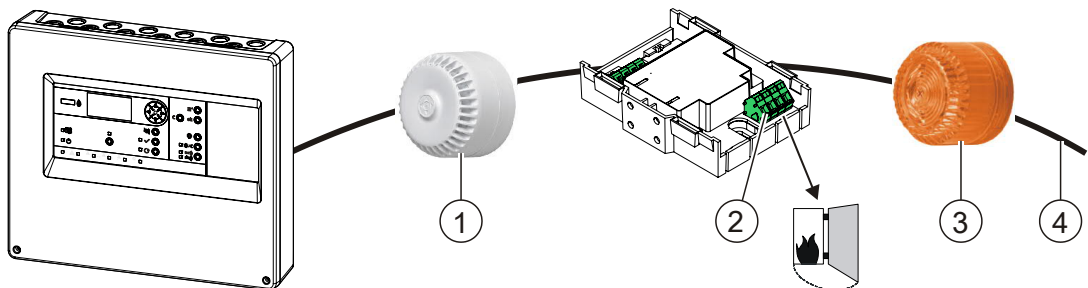
- Output for potential-free contact (AC 230 V)
- Status display via an LED
- Fields of application:
 - Activation/deactivation of a decentralized fire protection installation (AC 230 V, 5 A)
 - Monitored line up to output module FCA1209-Z1
 - Direct connection to the monitored output line of the fire control panel

Use on addressed detector line (FC360)



1	Connections for the output	2	Connections for monitored output line
---	----------------------------	---	---------------------------------------

Use on monitored output line



1	Sounder (acoustic)	3	Beacon
2	Connections for the output	4	Monitored output line

Type Overview

Type	Designation	Order number	Weight [kg]
FCA1209-Z1	Output module (230 V)	S54400-B124-A1	0.056

Accessories for output module FCA1209-Z1

Type	Designation	Order number	Weight [kg]
FDCH221	Housing with cover, seal, and screws	S54312-F3-A1	0.282
A5Q00004478	M20 x 1.5 metal cable gland	A5Q00004478	0.036
A5Q00004479	M20 metal counter nut	A5Q00004479	0.006
FDCM291	Mounting foot	A5Q00003855	0.001
DBZ1190-AB	Connection terminal 0.5...2.5 mm ² (3-pole)	BPZ:4942340001	0.001

Product documentation

Document ID	Name
A6V10393185	Installation Output Module FCA1209-Z1, Housing FDCH221
A6V10425246	Technical Manual Output Module FCA1209-Z1

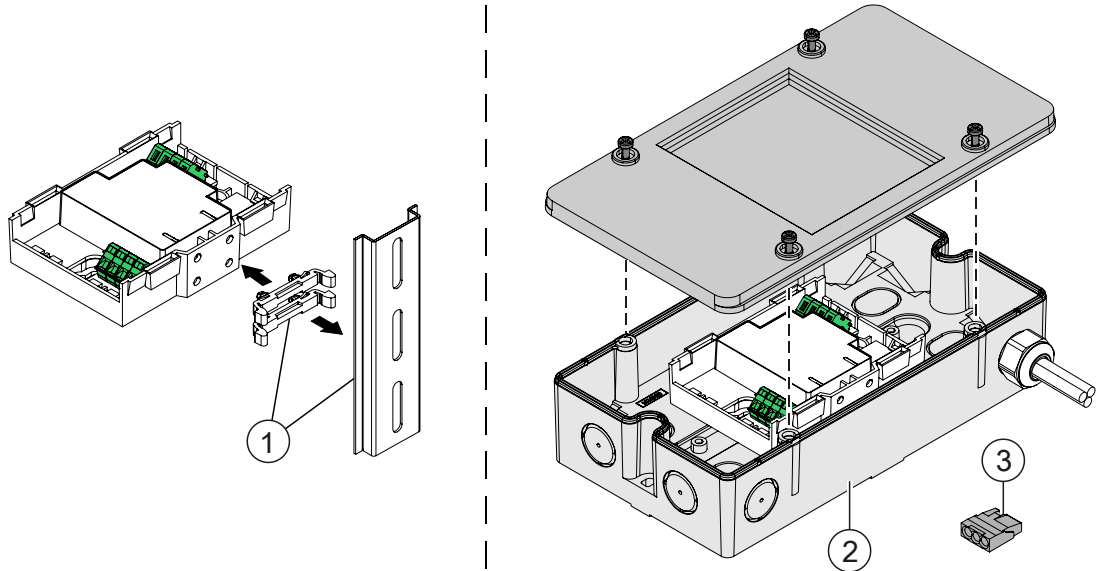
Related documents such as environmental declarations, CE declarations, etc., can be downloaded at the following Internet address:

<http://siemens.com/bt/download>

Mounting

Mounting options

- Series mounting on U-rail TS35 in a housing (>4.75 kg)
- In housing FDCH221 (accessory) with cover, seal, and screws for wet areas



1	Series mounting on U-rail TS35 with mounting feet FDCM291	3	Use connection terminals DBZ1190-AB for shielded cables.
2	Mounting in housing FDCH221		

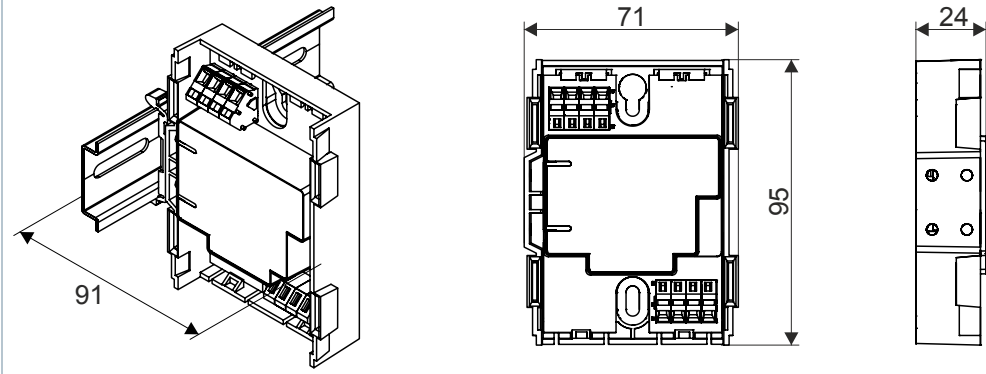
Disposal

	<p>The device is considered an electronic device for disposal in accordance with the European Guidelines and may not be disposed of as domestic garbage.</p> <ul style="list-style-type: none"> • Dispose of the device through channels provided for this purpose. • Comply with all local and currently applicable laws and regulations.
--	--

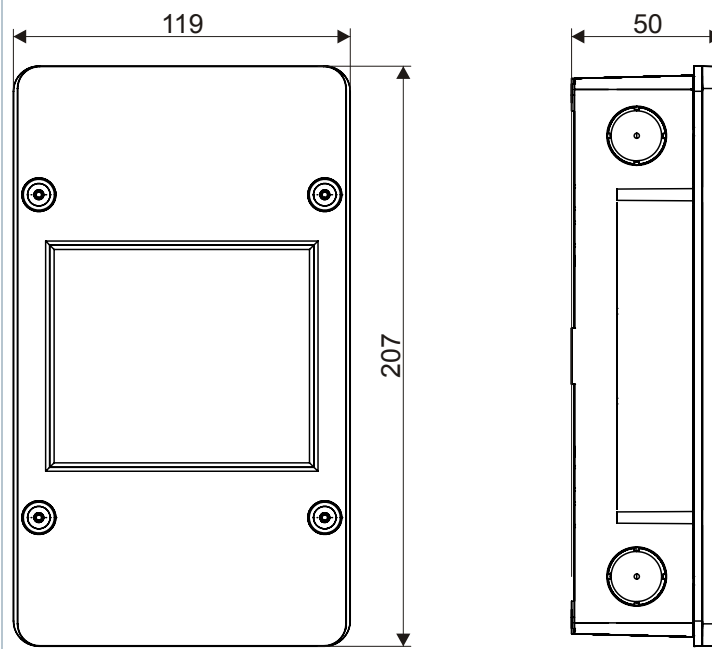
Technical data

FCA1209-Z1	
Operating voltage / operating current	DC 14.5...30 V / 25 mA
Operating current (quiescent)	Max. 0.1 mA
Relay output (ohmic)	AC: 230 V, max. 5 A DC: 30 V, max. 5 A
Relay coil resistance	480 Ω \pm 10 %
Internal resistance of relay output	Max. 0.1 Ω
Operating temperature	-25...+65 °C
Storage temperature	-25...+65 °C
Air humidity (non-condensing)	\leq 95 % rel.
Communication protocol	Monitored output line
Cable cross section	0.2...2.5 mm ²
Color <ul style="list-style-type: none"> • Housing • Housing cover • Housing FDCH221 	~RAL 9010 pure white Transparent matt ~RAL 9010 pure white
Protection category (IEC 60529) <ul style="list-style-type: none"> • When mounted on a U-rail TS35 • With housing FDCH221 	IP30 IP65
Standards	EN 54-18
Approvals <ul style="list-style-type: none"> • LPCB 	531r/01
System compatibility Monitored output line	FC20xx, FC72x, FC12x, FC361-xx

Output module FCA1209-Z1



Housing FDCH221



<p>14 CE 0832</p>	<p>FCA1209-Z1</p>	<p>Siemens Schweiz AG; Theilerstrasse 1a CH-6300 Zug Technical data: see doc. A6V10425246</p>
<p>FCA1209-Z1 Input/output device for use in fire detection and fire alarm systems installed in buildings.</p>		
<p>305/2011/EU (CPR): EN 54-18; 2014/30/EU (EMC): EN 50130-4 / EN 61000-6-3 ; 2014/35/EU (LVD): EN 60950-1; 2011/65/EU (RoHS): EN 50581</p>		
<p>The declared performance and conformity can be seen in the Declaration of Performance (DoP) and the EU Declaration of Conformity (DoC), which is obtainable via the Customer Support Center: Tel. +49 89 9221-8000 or https://siemens.com/bt/download</p>		
<p style="text-align: center;">DoP No.: 0832-CPR-F0264; DoC: No.: CED-FCA1209-Z1</p>		

Issued by
Siemens Switzerland Ltd
Building Technologies Division
International Headquarters
Theilerstrasse 1a
CH-6300 Zug
Tel. +41 58 724 2424
www.siemens.com/buildingtechnologies

© Siemens Switzerland Ltd, 2016
Technical specifications and availability subject to change without notice.