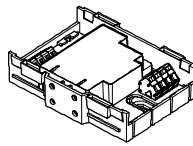


FCA1209-Z1

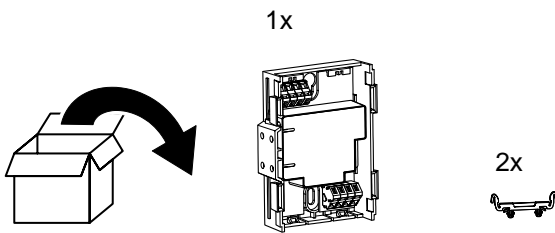
en	Output module (230 V)	pt	Módulo de saída (230 V)
de	Ausgabemodul (230 V)		
fr	Module de sortie (230 V)		
es	Módulo de salida (230 V)		
it	Modulo uscite (230 V)		
nl	Stuurmodule (230 V)		

en	Installation	pt	Instalação
de	Montage		
fr	Montage		
es	Montaje		
it	Montaggio		
nl	Montage		



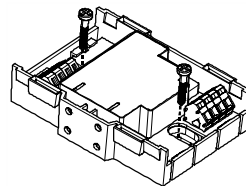
FCA1209-Z1
S54400-B124-A1

1



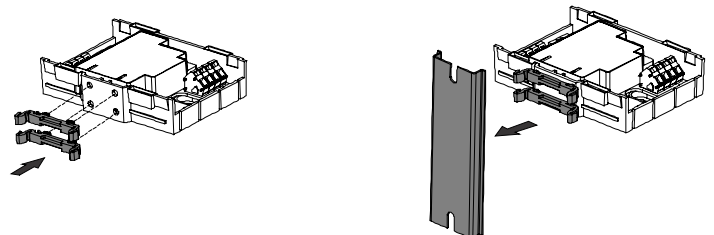
2-1

en	Installation on a plane surface In enclosures weighing >4.75 kg
de	Montage auf einer planen Fläche In Gehäusen mit Gewicht >4,75 kg
fr	Installation sur une surface plane Dans des boîtiers d'un poids >4,75 kg
es	Montaje en una superficie plana En carcasas con peso >4,75 kg
it	Montaggio su una superficie piana In contenitori con peso >4,75 kg
nl	Montage op een vlakke ondergrond In een behuizing met gewicht >4,75 kg
pt	Instalação em superfície plana Peso da embalagem >4,75 kg



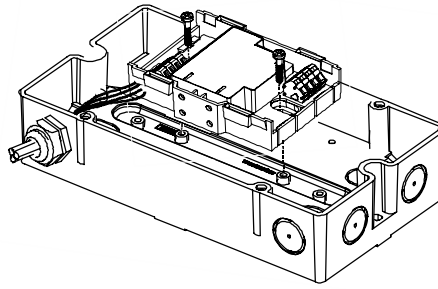
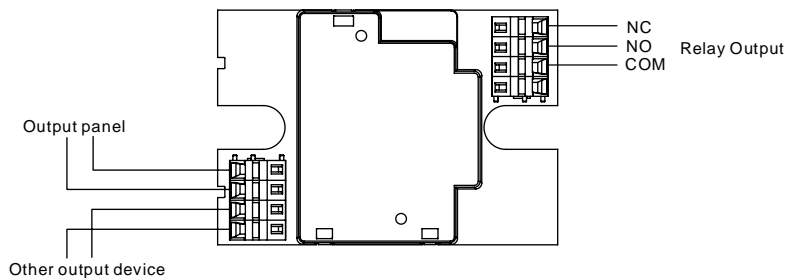
2-2

en	Installation on a DIN rail In enclosures weighing >4.75 kg
de	Installation auf einer Hutschiene In Gehäusen mit Gewicht >4,75 kg
fr	Installation sur un profilé Dans des boîtiers d'un poids >4,75 kg
es	Instalación en un carril DIN En carcasas con peso >4,75 kg
it	Installazione su una top hat rail In contenitori con peso >4,75 kg
nl	Installatie op een DIN-rail In een behuizing met gewicht >4,75 kg
pt	Instalação em calha DIN Peso da embalagem >4,75 kg

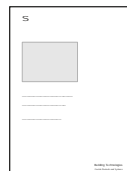


2-3

en	Installation in housing
de	Montage im Gehäuse
fr	Installation dans le boîtier
es	Montaje en la carcasa
it	Montaggio nel contenitore
nl	Montage in behuizing
pt	Instalação em caixa

**3****4**

en	Test the system
de	Testen Sie das System
fr	Testez le système
es	Pruebe el sistema
it	Testare il sistema
nl	Test het systeem
pt	Teste ao sistema



en	You will find more information in document A6V10425246
de	Weitere Informationen finden Sie im Dokument A6V10425246
fr	Pour de plus amples informations, se référer au document A6V10425246
es	Para más información al respecto, consulte el documento A6V10425246
it	Per ulteriori informazioni si rimanda al documento A6V10425246
nl	Meer informatie kunt u vinden in het inbedrijfsteldocument A6V10425246
pt	Para mais informações, consulte o documento A6V10425246

www.siemens.com/buildingtechnologies

14 **CE** 0832

FCA1209-Z1

Siemens Switzerland Ltd; Gubelstrasse 22
CH-6301 Zug
Technical data: see doc. **A6V10425246**

FCA1209-Z1 Input/output device for use in fire detection and fire alarm systems installed in buildings.

305/2011/EU (CPR): EN 54-18; 2014/30/EU (EMC): EN 50130-4 / EN 61000-6-3 ; 2014/35/EU (LVD): EN 60950-1; 2011/65/EU (RoHS): EN 50581

The declared performance and conformity can be seen in the Declaration of Performance (DoP) and the EU Declaration of Conformity (DoC), which is obtainable via the Customer Support Center: Tel. +49 89 9221-8000 or <http://siemens.com/bt/download>

DoP No.: 0832-CPR-F0264; DoC: No.: CED-FCA1209-Z1

Siemens Switzerland Ltd
Building Technologies Division
International Headquarters
Gubelstrasse 22
CH-6301 Zug
Tel. +41 41 – 724 24 24
Fax +41 41 – 724 35 22
www.siemens.com/buildingtechnologies

© 2015 Siemens Switzerland Ltd
Data and design subject to change without notice.