

Mobile Event List MP1.00

Quick Start Guide

Table of Contents

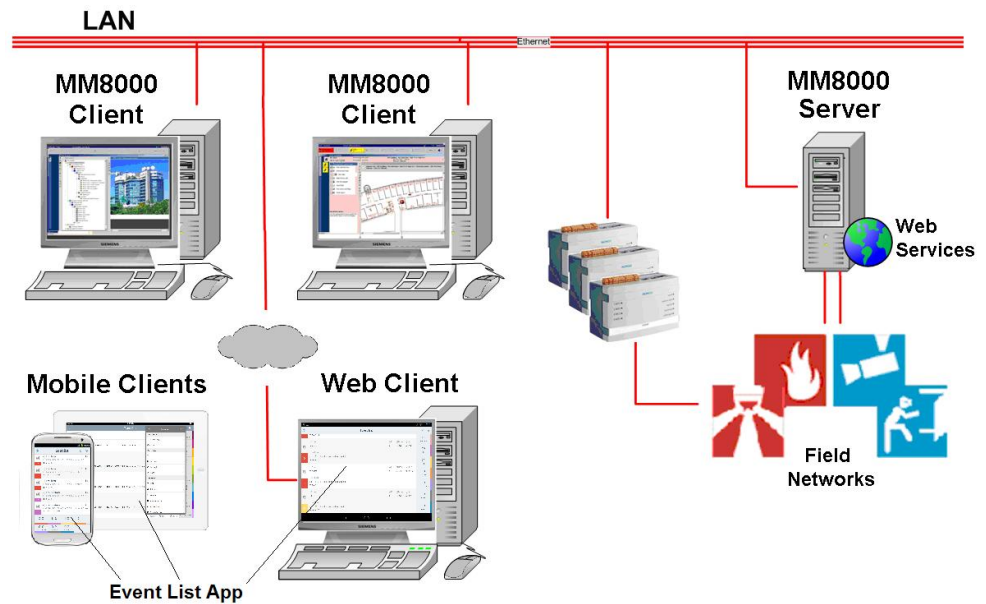
1	The Mobile Event List	4
2	System Requirements	5
3	Installing the Event List App	6
4	Using the App	7
4.1	Signing In	7
4.2	Viewing the Event List	8
4.3	Viewing the Event Details	11
4.4	Handling an Event	11
4.5	Filtering Events.....	12
4.6	Sharing Events.....	13
4.7	Setting the Interface Language	14
4.8	Logging Out.....	14
5	Device-Specific Information	15
5.1	Event List App on Tablets.....	15
5.2	Android Back Button	16
6	Using the App from Web Browser	17
7	Quick Reference	18

1 The Mobile Event List

Mobile Event List (MEL) is the app for mobile devices (smartphones and tablets equipped with the Android operating system) and web browser access for viewing and handling events originated by a MM8000 Management Station.

NOTE: The support of iOS for Apple's iPhone and iPad is planned together with the release of MM8000 MP4.70.

The MEL app connects to the MM8000 server and acts as an additional client station with the capability to both display and process pending events.



Event List App on Mobile Devices and Web Stations

2 System Requirements

MM8000 Server Requirements

- MP4.60-01 Service Release, including support for DMS8000 Web Services Extension and FS20 Fire System MP5.2.
- License for web extension.
→ For details and prerequisites, see MM8000 MP4.60-01 Release Notes.

Mobile Device Requirements

- Android V4.0 or higher
NOTE: At the time of publishing this document, Android V4.4 has a known performance issue in the Java script engine and so is not recommended. Contact technical support about the problem with this Android version.

Web Stations: Browser Requirements

- Internet Explorer 9 with [Google Chrome Frame](#) add-in (*)
- Chrome V22 or higher
- Safari V6 or higher
→ For more information on web stations, see Using the App from Web Browser [→ 17].

Notes

(*) The Google Chrome Frame Add-in is supported on the following operating systems: Windows 7, Vista, and XP SP3, whereas it has a known incompatibility with Windows Server 2008 R2.

3 Installing the Event List App

Downloading the App via PC

- Get the Siemens Mobile Events APK file from PSP support site.
- Send an email message to the mobile device with the APK file as attachment, then open the email on the mobile device and download the file, or copy the APK file on the mobile device memory using a USB cable or other data connections.
- Using a file browsing application, locate and select the APK file.
- Confirm the installation that starts automatically.

NOTE: The installation is performed by the Android Package Installer. In the **Security Settings** of your device, the **Device administration > Unknown sources** option controls the permission to install apps from sources other than the Google Play Store. Check this option to allow the installation of the APK file.



NOTE: In the next version, the App will be available on Google Play and Apple Store markets. The installation process will then be the same as standard Android apps.

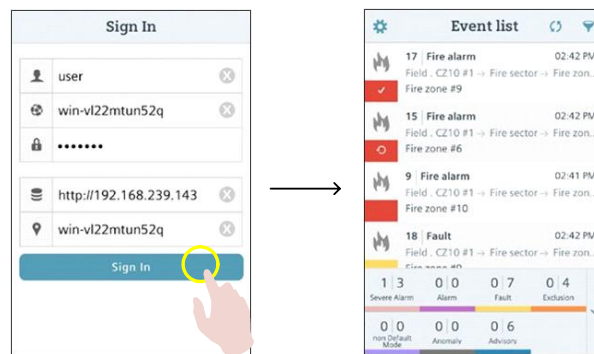
4 Using the App

With the MEL app, you can:

- View the event list [→ 8] and event details [→ 11].
- Send out [→ 11] Acknowledge and Reset commands to handle an event.
- Filter [→ 12] events in the list.
- Share [→ 13] event details via SMS/email.
- Set [→ 14] a different language in the user interface.

4.1 Signing In

- To sign in, enter **Username**, **Domain**, and **Password**.
The very first time, you need to set the *Server URL or IP address*, and the *Server Station* name.



Signing In



Sign-in Page Details

Item	Field Name	Description
1	User	Your username
2	Domain	Server domain name
3	Password	Your password
4	Server URL	Server IP address
5	Station name	Server computer name

**NOTE:**

When you start the MEL app for the very first time, a *Term of Use and Privacy* page displays presenting an *End User License Agreement* that you must read and accept to use the software.

If you do not want to accept the agreement, you can close the app or the web page.

4.2 Viewing the Event List

Events are presented on the screen organized into three sections: a *Title Bar* on the top, the actual *List* of events, and a *Summary Bar* along the bottom.



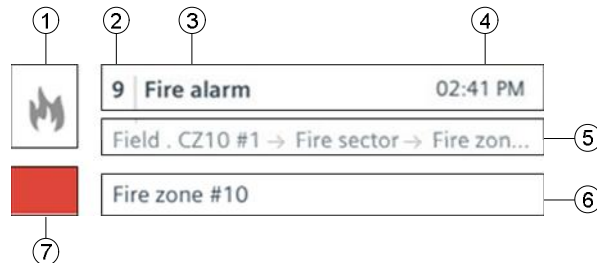
Event List



Title Bar

Item	Description
1	Side panel: tap to open the Settings menu
2	Page name
3	Refresh button: tap to refresh the list
4	Event filter button: tap to open the filter page

Event line



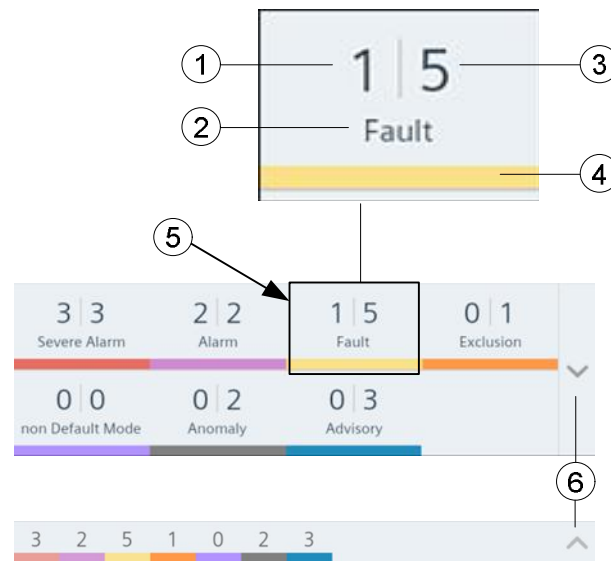
Event Line

Item	Description
1	Discipline icon
2	Event ID
3	Event cause
4	Time / Date: today's events display here the time of occurrence, whereas older events show the date of occurrence. Both time and date are available in the event details [→ 11].
5	Event location
6	Event source
7	Command icon (if available) with event category color background

Summary Bar

The summary view provides a compact report of pending events and allow for a quick category-based filtering.

- Tap a category to apply an event filter on that category, and tap again to remove the filter.
- Tap the arrow to toggle between an expanded or reduced view.



Summary Bar

Item	Description
1	Unacknowledged events of the category
2	Category name
3	Total number of events of the category
4	Category color, gray if the category is filtered out
5	Filter button: tap to toggle the category filter on/off
6	Reduce/Expand arrow: tap to reduce/expand the summary


Refreshing the Event List

When the pending events list changes on the server, a message displays with:

- The number of new events *Added* to the list.
- The number of closed events *Removed* from the list.
- A *Tap to refresh* button that you can use to get the updated list.

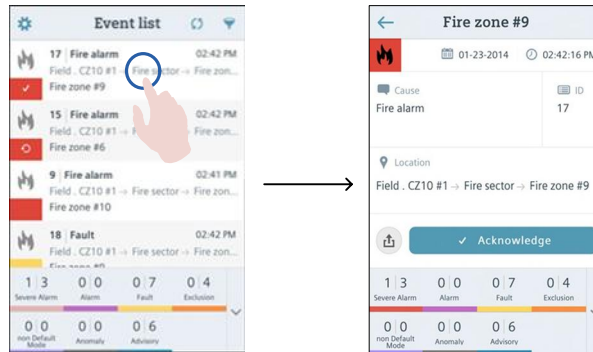


Event List Update

You can also refresh the list at any time by tapping  in the Title Bar.

4.3 Viewing the Event Details

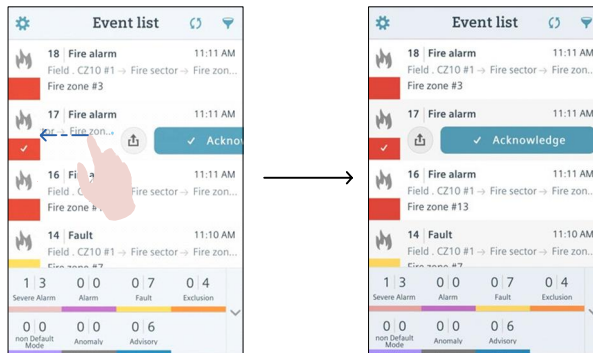
- Tap the event area in the list to open a detailed view that presents the event information and the command button for handling the event.



Event Details

4.4 Handling an Event

- Swipe left on an event to display the available event-handling commands.
- Swipe right to go back and close the command view.
NOTE: Commands are also available in the event details [→ 11] view.




Accessing commands

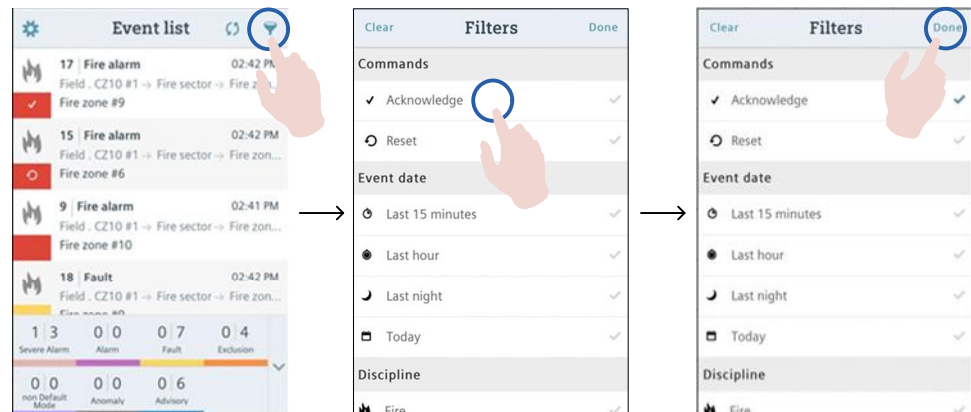
4.5 Filtering Events

Filtering by Event Category

- In the Summary Bar along the bottom, tap the **counters** of a category to filter the list for that category only. Tap again to remove the filter.

Filtering by Other Criteria

1. In the event list, tap **Filter** .
2. Tap the filter criterion you want to apply.
3. In the Title Bar, tap **Done**.



Filtering Events

4. Open the Filter page again, and tap **Clear** to remove the filter.


Filtering Criteria

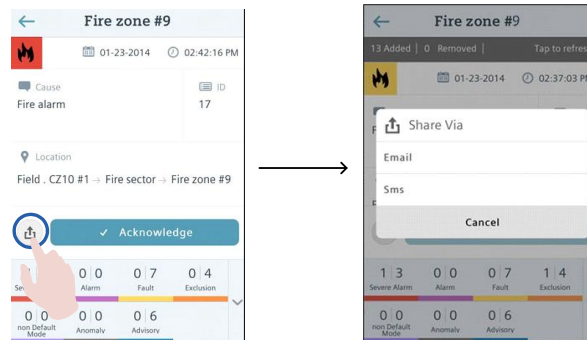
Commands: Acknowledge (unacknowledged events) or Reset (unreset events).

Event Date: Last 15 min (events occurred during the past 15 min), Last Hour, Last Night (from yesterday at 20:00 to today at 7:59), Today (since today at 00:00).

Discipline: Fire, Intrusion, and so on, depending on the system configuration.

4.6 Sharing Events

1. In the event details, tap **Send** .
 2. Tap **Email** or **SMS**.
- ⇒ Your default email or SMS app displays to send the event information.



Sharing Event Information

Message Contents and Structure

The email/SMS message includes the following information:

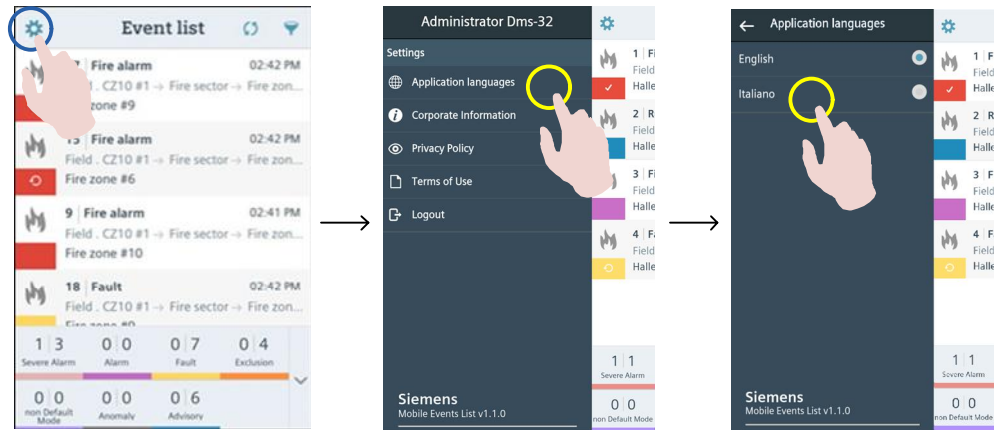
- Cause of the event
- Source (description of the device issuing the alarm)
- Date and Time of occurrence
- Location (the complete path of the event *Source*)
- Category
- Discipline
- Event ID

For example:

Cause: Fire alarm
Source: 1/2/1/25 04FA467
Date: Dec 12
Time: 03:51 PM
Location: Field.FS20 System#1.1/2/1;1/2/1/25 04FA467
Category: Severe Alarm
Discipline: Fire
ID: 21

4.7 Setting the Interface Language

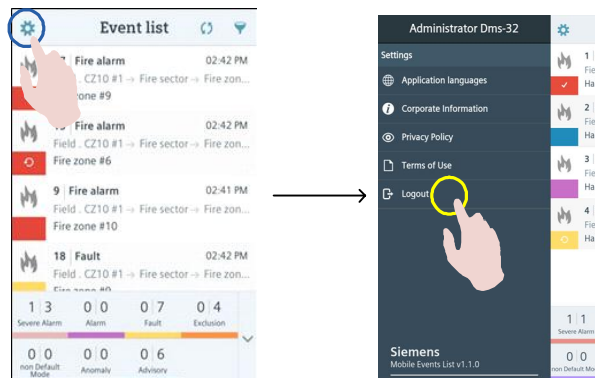
1. Tap the **Settings** menu.
 2. Tap **Application languages**.
 3. Select the Language, for example **Italiano**.
- ⇒ The app interface switches to Italian.



Setting a Different Interface Language

4.8 Logging Out

1. Tap the **Settings** menu.
2. Tap **Logout**.



Logging out

5 Device-Specific Information

5.1 Event List App on Tablets

When the app is running on a tablet rather than a smartphone, it can take advantage of the larger display area to show more details about events. For example:



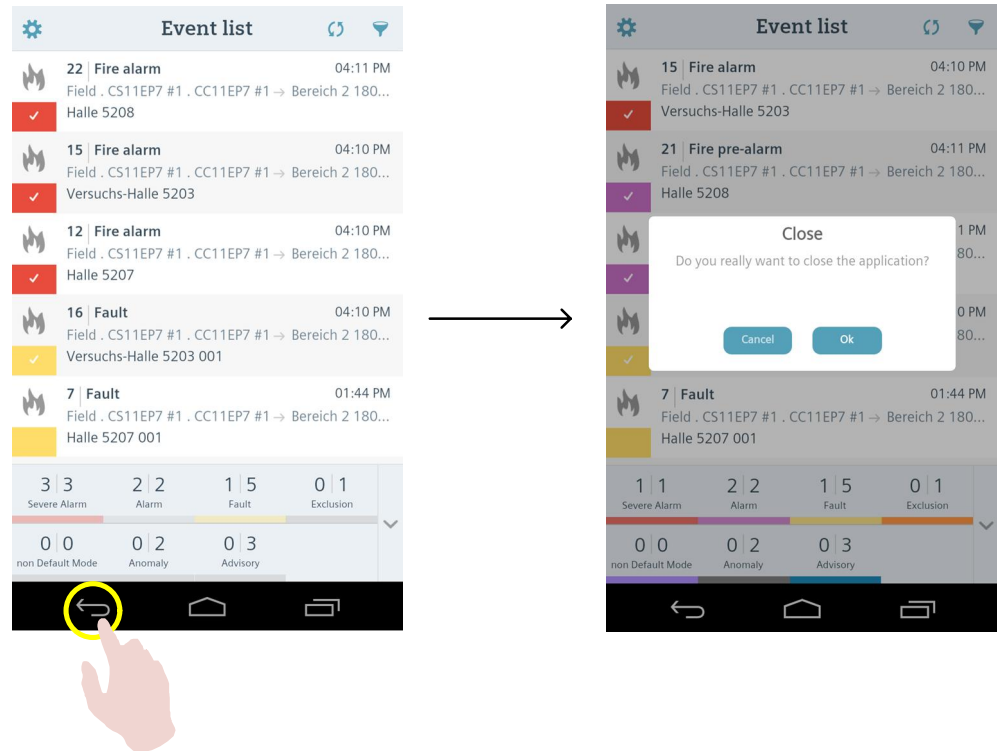
Horizontal Screen on Tablets



Vertical Screen on Tablets

5.2 Android Back Button

The *Back* button, available on Android devices, allows you to step back through your navigation flow. Note that pressing Back from the initial event list view causes the app to close. In such a case, a message box displays, asking you to confirm.



Android Back Button

6 Using the App from Web Browser

The MEL app can be used on a web station using a compatible browser [→ 5].

- To start the app from the browser, just type the server name or IP address in the address field, using the standard http protocol or the secured https (recommended). For example:

```
https://mm8000serv/
```

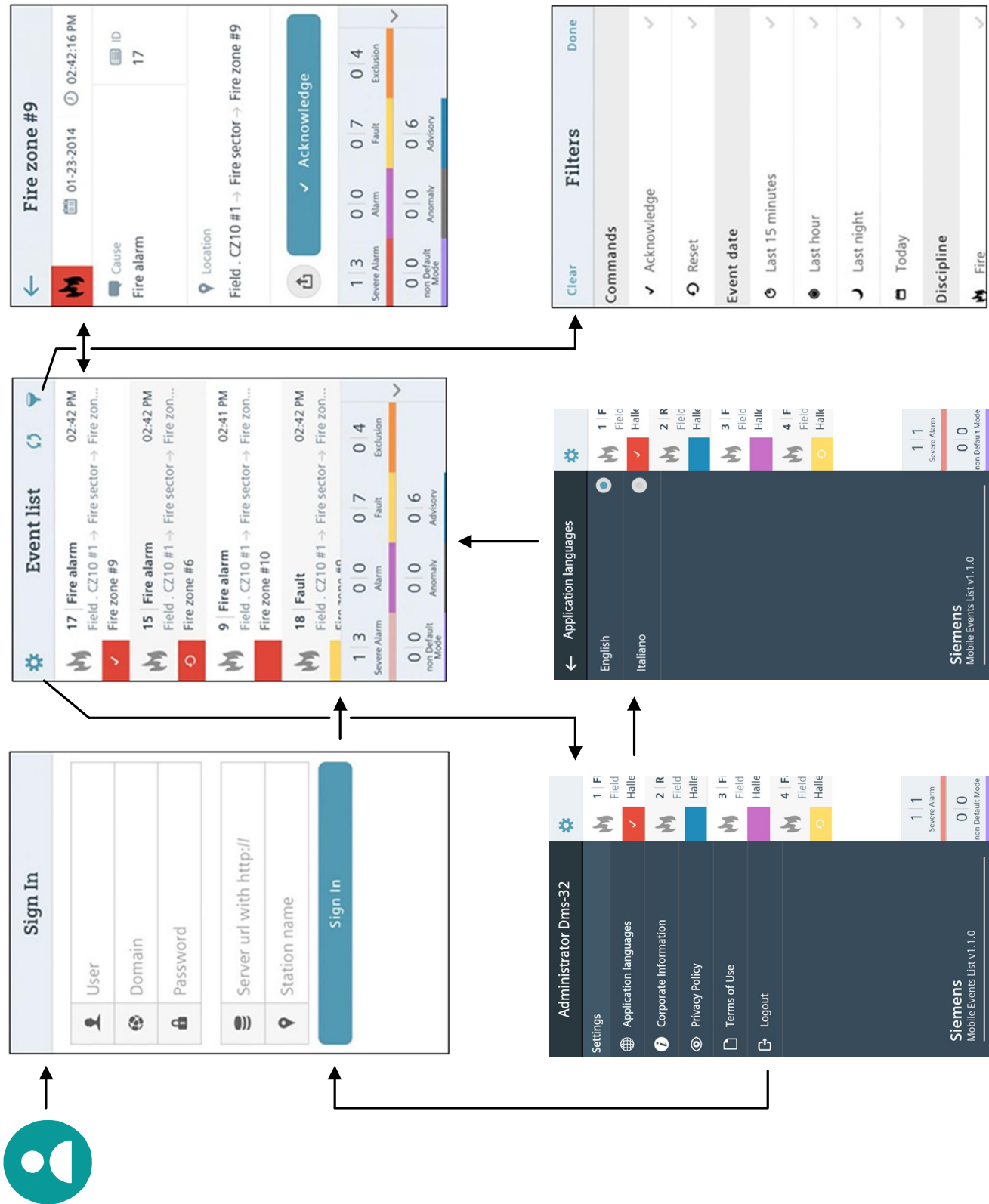
```
http://192.168.1.19/
```

In case of problems due to multiple web applications available on the server, you may need to specify the app name *webapp*. For example:

```
http://mm8000serv/webapp
```

```
https://192.168.1.19/webapp
```

7 Quick Reference



Quick Navigation Reference

Issued by
Siemens Switzerland Ltd
Infrastructure & Cities Sector
Building Technologies Division
International Headquarters
Gubelstrasse 22
CH-6301 Zug
Tel. +41 41-724 24 24
www.siemens.com/buildingtechnologies

© 2014 Copyright Siemens Switzerland Ltd
Technical specifications and availability subject to change without notice.