

Installation Instruction Model BDS132A Addressable Input Module



Figure 1
BDS132A

Overview

BDS132A input modules are used to monitor the normally open contacts of an auxiliary device. In addition to monitoring the contact, the module will supervise the wiring to the monitored device for open circuit and ground short via an end of line device (EOL82).

Features

- Comply with UL864.
- To be used to monitor any UL listed fire contact closure device.
- The input signals to the input module are normally potential free signals. When any field devices in the connection are activated, BDS132A delivers signals via F-Bus to the control unit, which in turn activates other modules according to the preset logic relationship.
- The controller automatically detects any possible fault of the module.
- Input can be supervised via an end of line device (EOL82).

Installation

Pre-Installation: Set address for each BDS132A module using the Dip-switch (binary, the first 1-7 digits are available and the last digit is reserved) located on the module. Each of these addresses must be the same as the addresses assigned in the project file.

The BDS132A input module should be installed in the following way:

1. Drill 2 holes (distance is 60mm) on the wall. See figure 2.
2. Fix the module housing on wall with 2 M3 screws.
3. Connect "P" and "S" terminals to detection bus.
4. Connect the normal open contacts of field devices to terminals "D" and "G" and bridge the terminals at the device end with a terminating resistance (EOL82). See figure 3.

A listed gang box(4×4×2 inch) must be used for mounting.

Note:

- It is recommended wiring with twisted-pairs from module to module. The wiring requirement is 18AWG to 16AWG.

Technical Specification

Operating voltage	24VDC
Quiescent current	≤ 1mA
Alarm current	≤ 4mA
DG max. current	400mA
Operating temperature	0~+49°C
Relative humidity	≤ 93%(32±2°C)

Operation

LED indicator

Status	Condition
Steady On	Activated
Off	On site device is normal

Order Information

Type	Description	Stock Code
BDS132A	Addressable Input Module	A5Q00021150
EOL82	End of line device	A5Q00021241

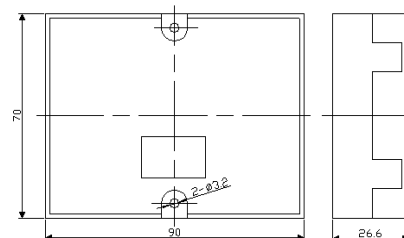


Figure 2 Installation Diagram

Notes:

1. Input supervised.
2. Max. distance 200m(the wiring requirement is 18AWG) from BDS132A to supervised input.
3. All circuits are power limited.

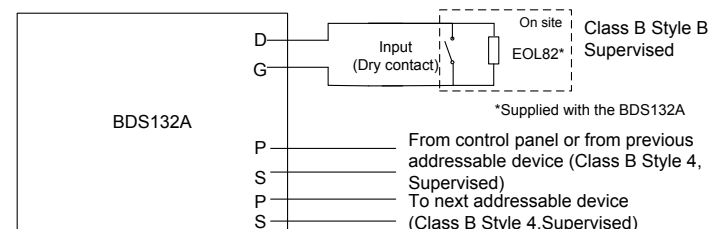


Figure 3 Wiring Diagram